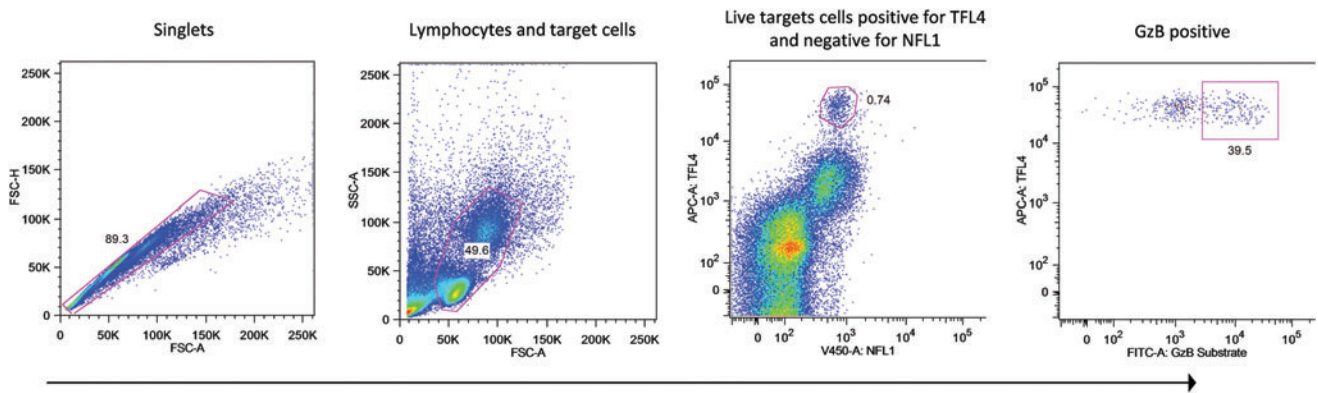


Supplementary Data



SUPPLEMENTARY FIG. S1. Gating strategy for flow cytometric analysis. In this representative sample, cells were first gated for singlets (FSC-H vs. FSC-A) and lymphocytes and target cells (SSC-A vs. FSC-A). The lymphocytes and target gate are further analyzed positive for TFL4 and negative for NFL1, taking only the live target cells. Frequency of granzyme B (GzB) expression is then determined from this gated population.