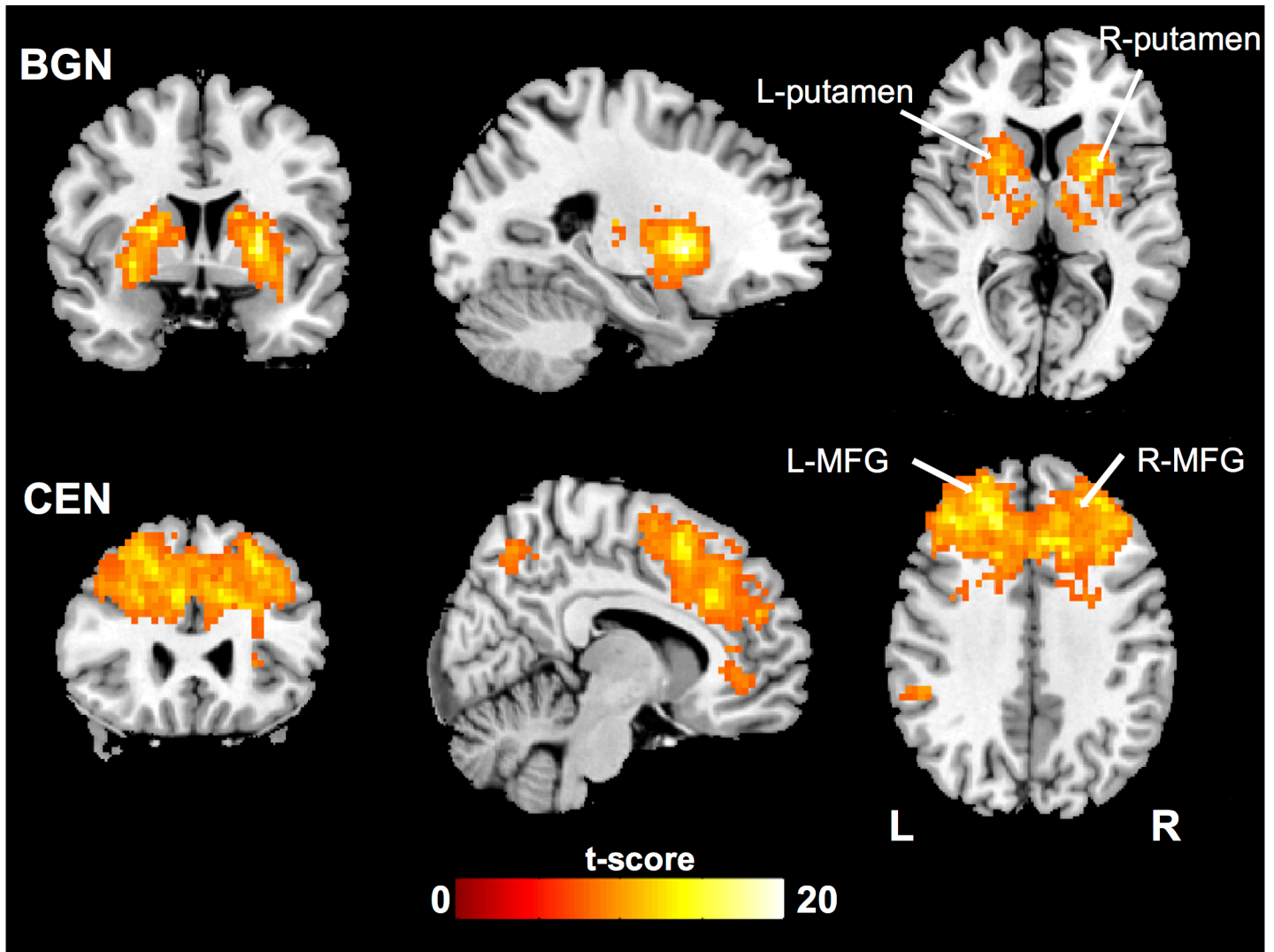


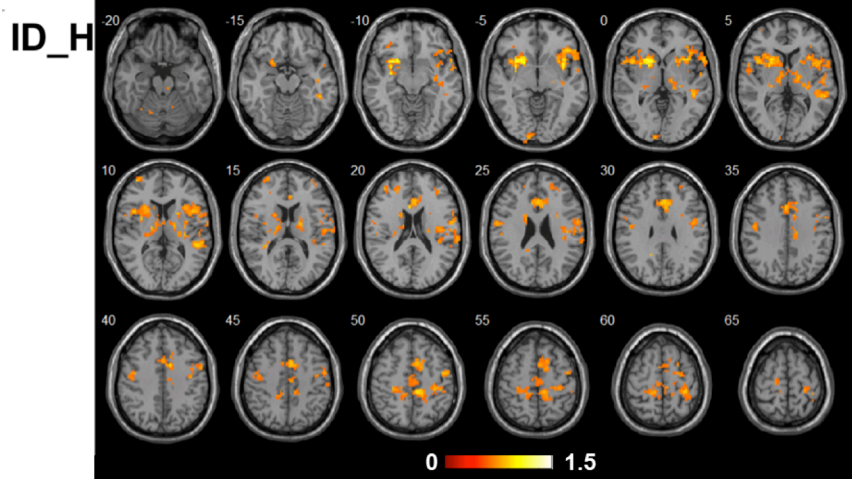
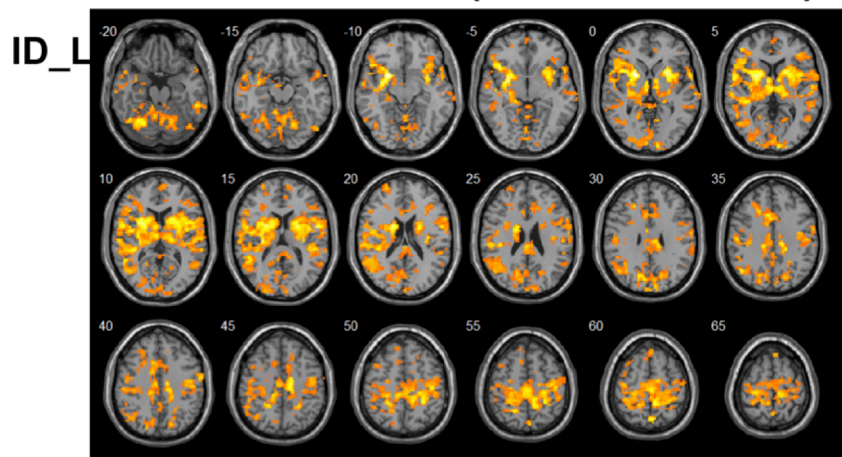
Supplemental figure 1 Spatial maps and ROIs of basal ganglia network (BGN) and central executive network (CEN). Note. The color maps represent the results of one-sample t-test ($p < 0.05$, Familywise Error Rate corrected). MNI = Montreal Neurological Institute.



Regions	Peak t-value	Clusters size (voxels)	MNI coordinates		
			X	Y	Z
BGN					
Left Putamen	20.8	1097	-24	6	0
Right Putamen	16.38		30	6	-6
Left Thalamus	15.69		-15	-21	9
CEN					
Left MFG	18.98	5579	-33	51	18
Right MFG	17.84		15	42	39
Left Superior Parietal Lobe	17.23	233	-6	-63	45
Right Inferior Parietal Lobe	10.35	66	51	-42	33

Supplemental figure 2. Inter-network functional connectivity of left putamen in BGN (A) and HF-HRV responses in individual MCI cases with lowest (=0, ID_L) and highest MF (=42, ID_H) from the MRI subsample (B).

A Left BGN seed (-24, 6, 0, 12mm)



B

