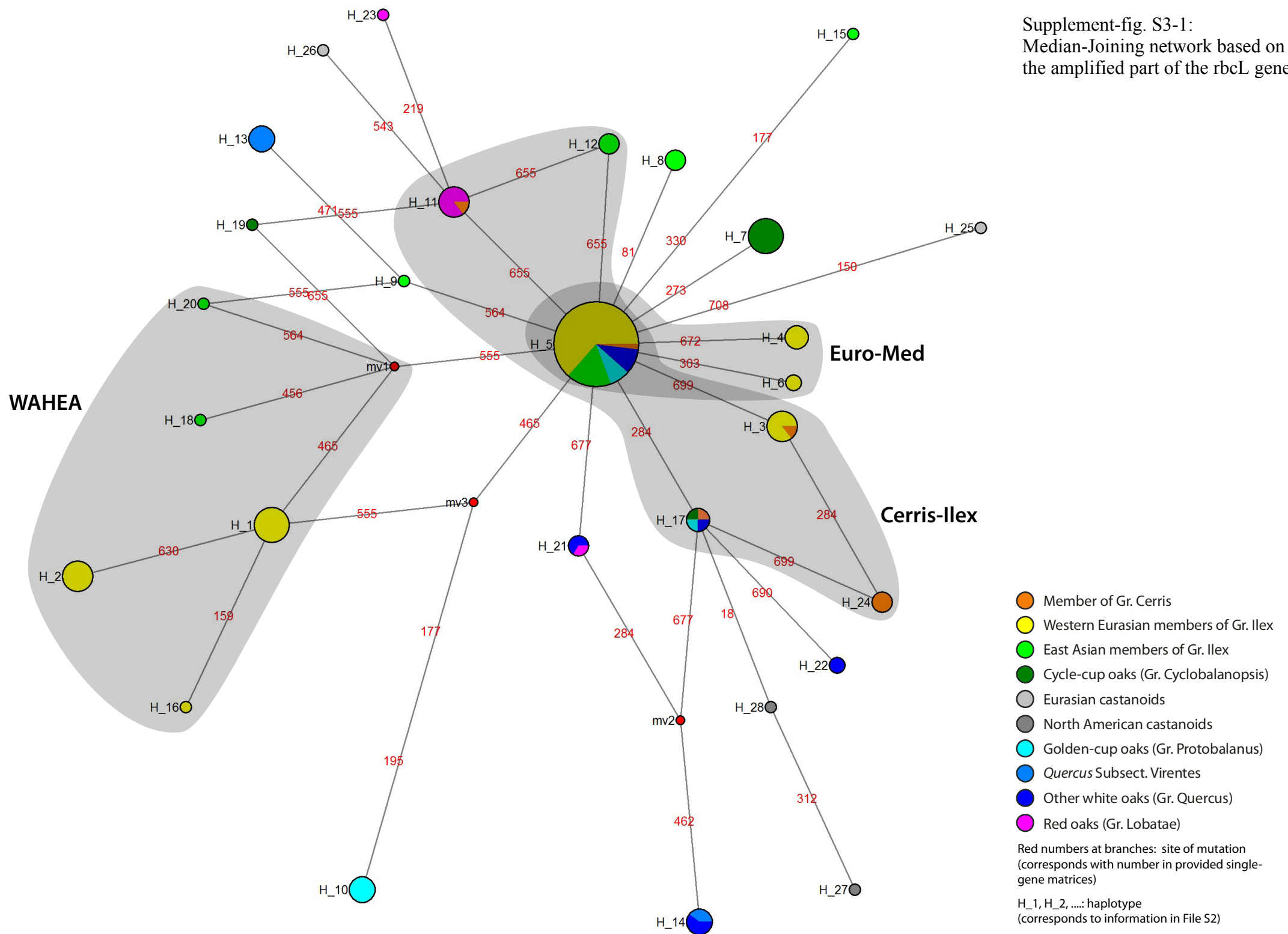
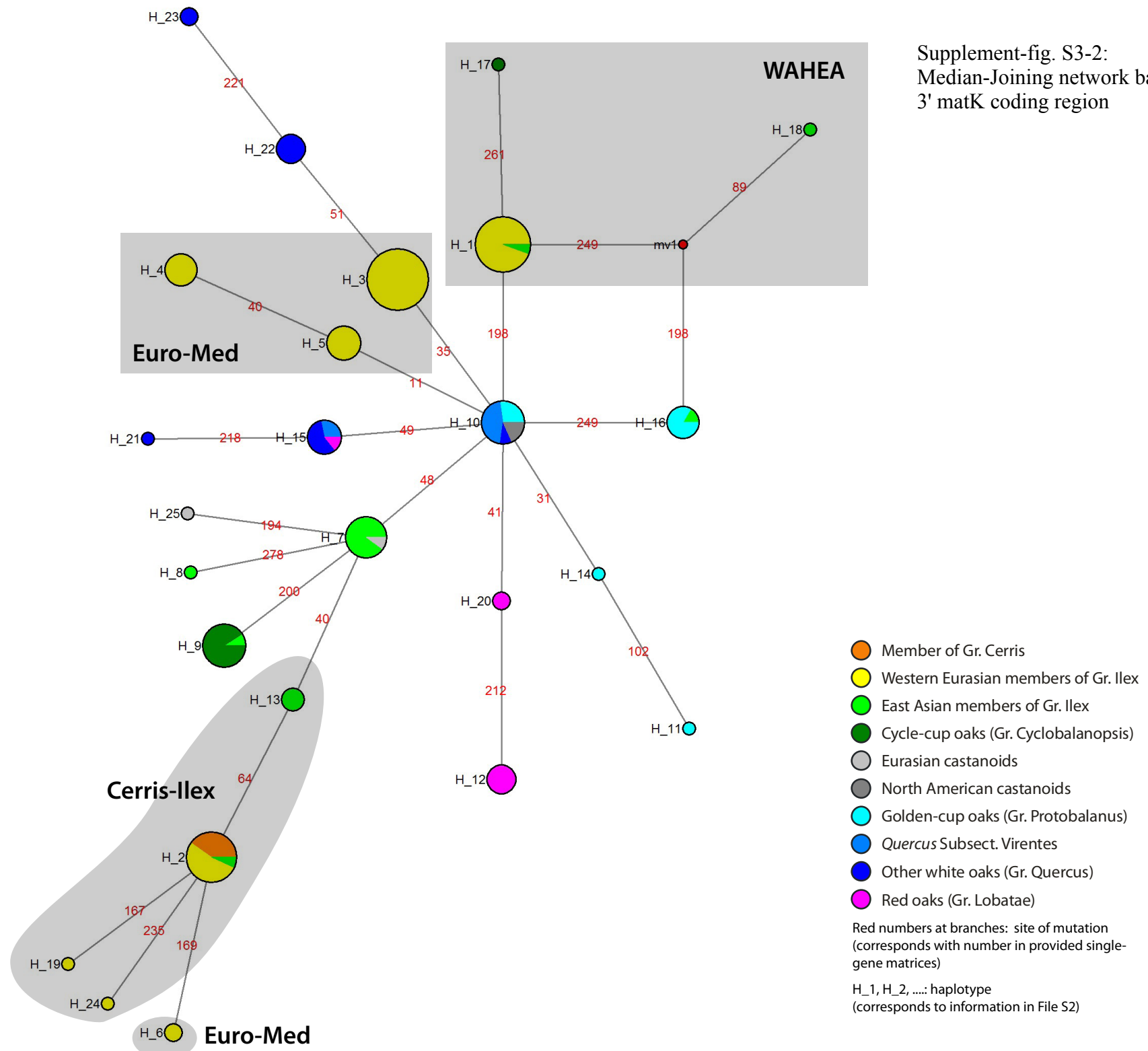


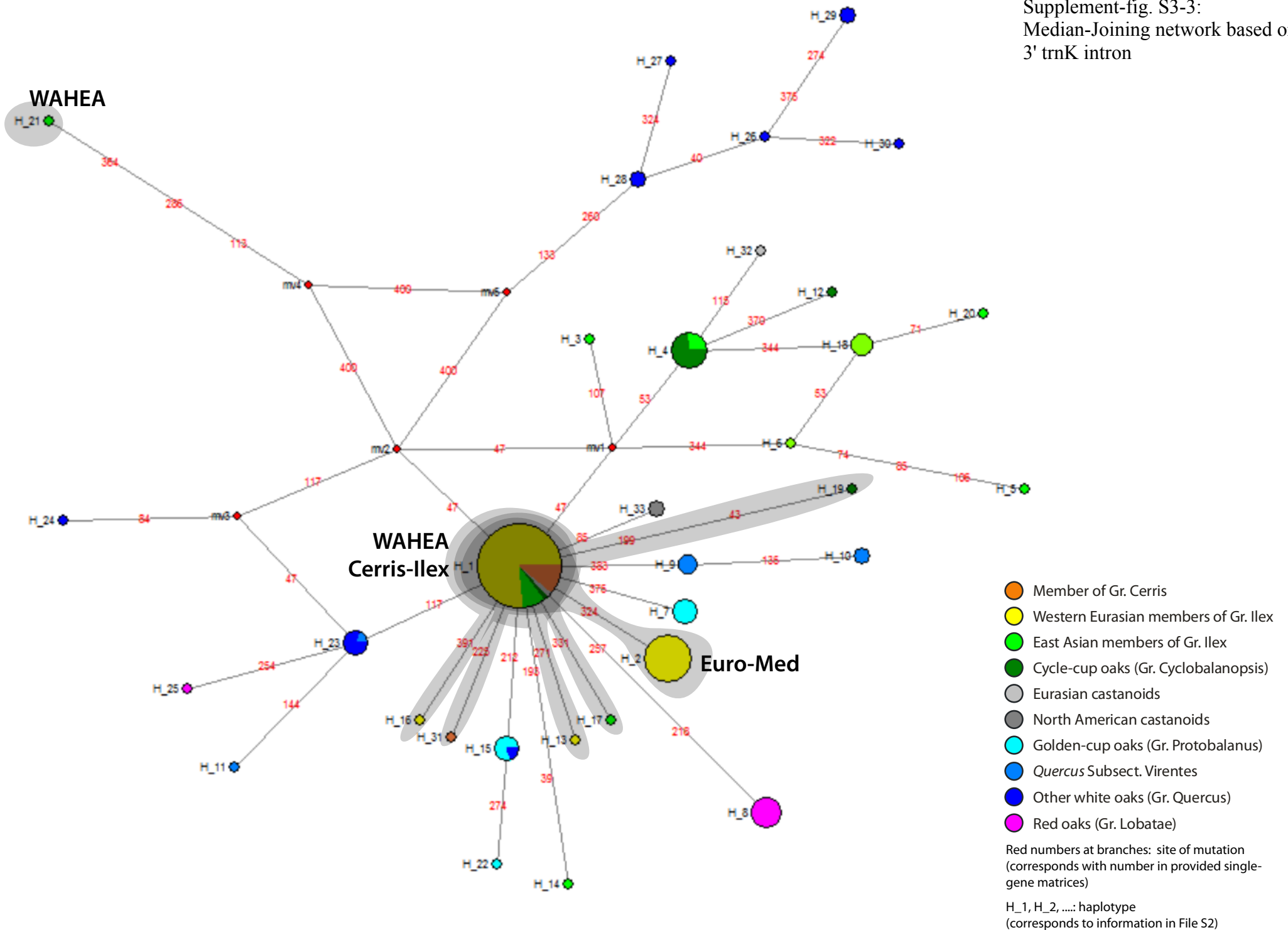
Supplement-fig. S3-1:
Median-Joining network based on
the amplified part of the *rbcl* gene



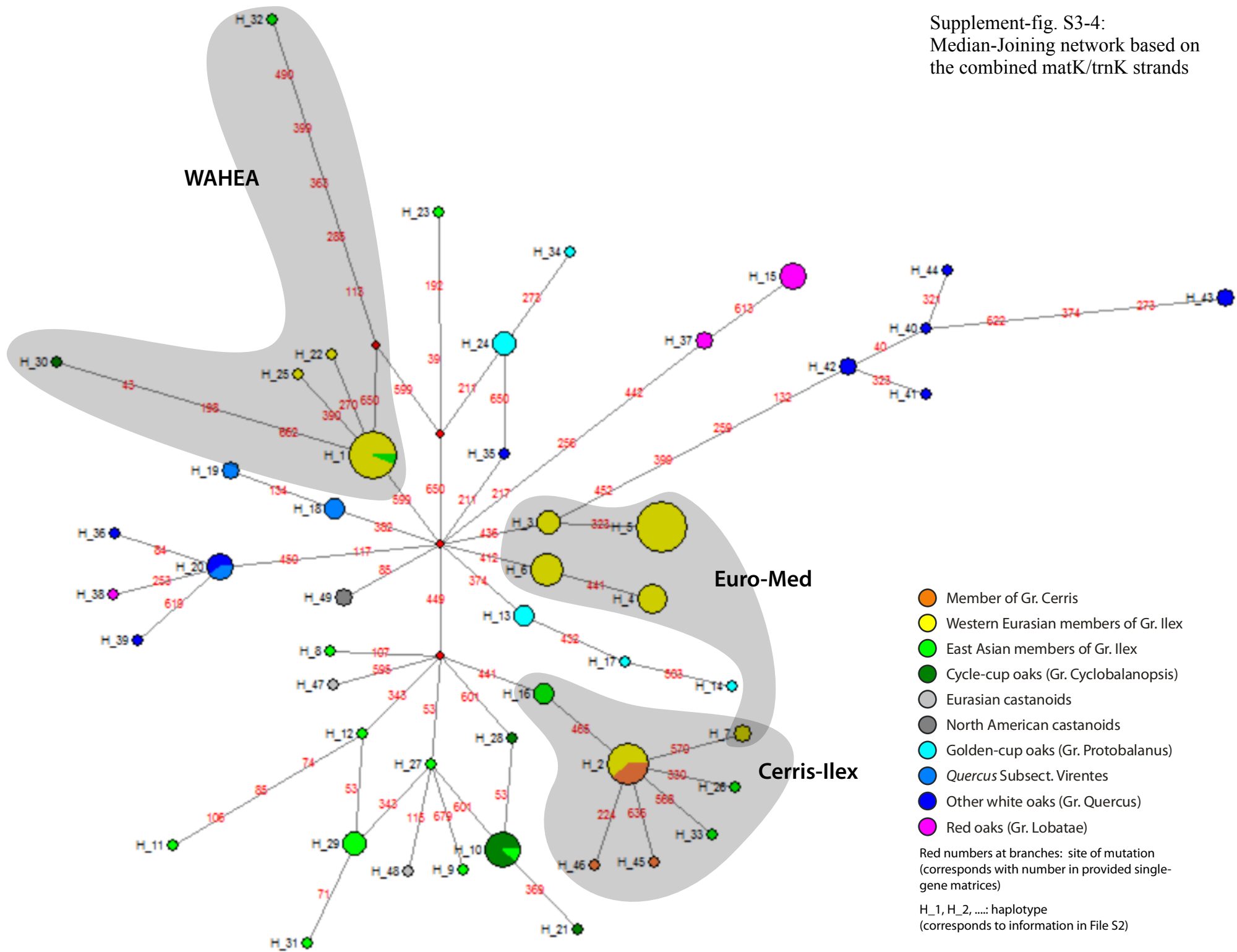
Supplement-fig. S3-2:
Median-Joining network based on
3' matK coding region



Supplement-fig. S3-3:
Median-Joining network based on
3' trnK intron



Supplement-fig. S3-4:
Median-Joining network based on
the combined matK/trnK strands



Supplement-fig. S3-5:
 Median-Joining network based on
 trnH-psbH spacer (gaps excluded; same
 basic graph as shown in text-fig. 2)

