

Supplementary Materials: The Effects of Different Purifying Methods on the Chemical Properties, *in Vitro* Anti-Tumor and Immunomodulatory Activities of *Abrus cantoniensis* Polysaccharide Fractions

Shaowei Wu, Xiong Fu, Margaret A. Brennan, Charles S. Brennan and Chen Chun

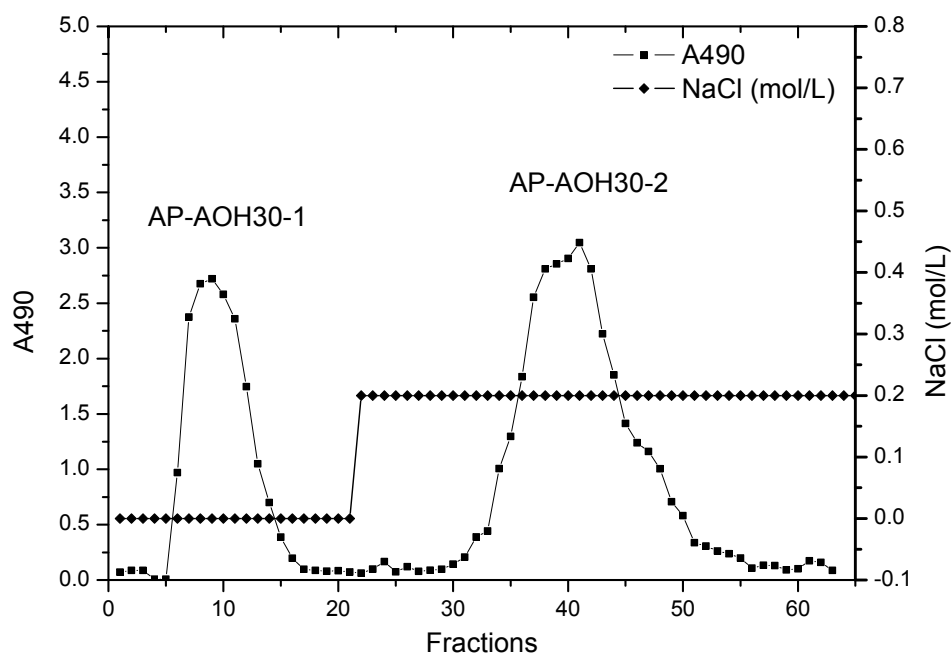


Figure S1. Elution curve of crude polysaccharide AP-AOH30 purified by DEAE-52 cellulose anion-exchange chromatography.

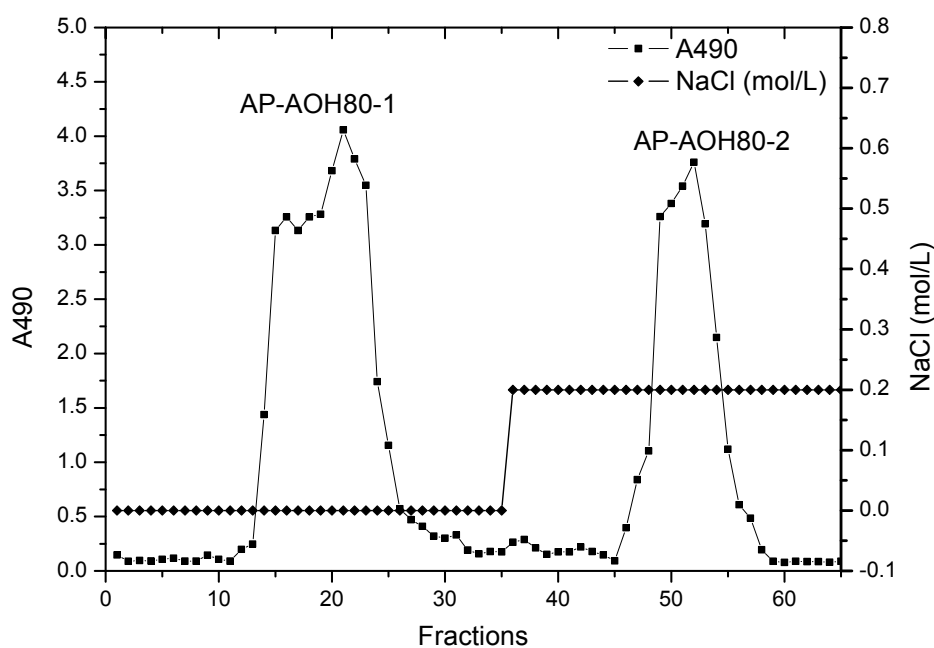


Figure S2. Elution curve of crude polysaccharide AP-AOH80 purified by DEAE-52 cellulose anion-exchange chromatography.

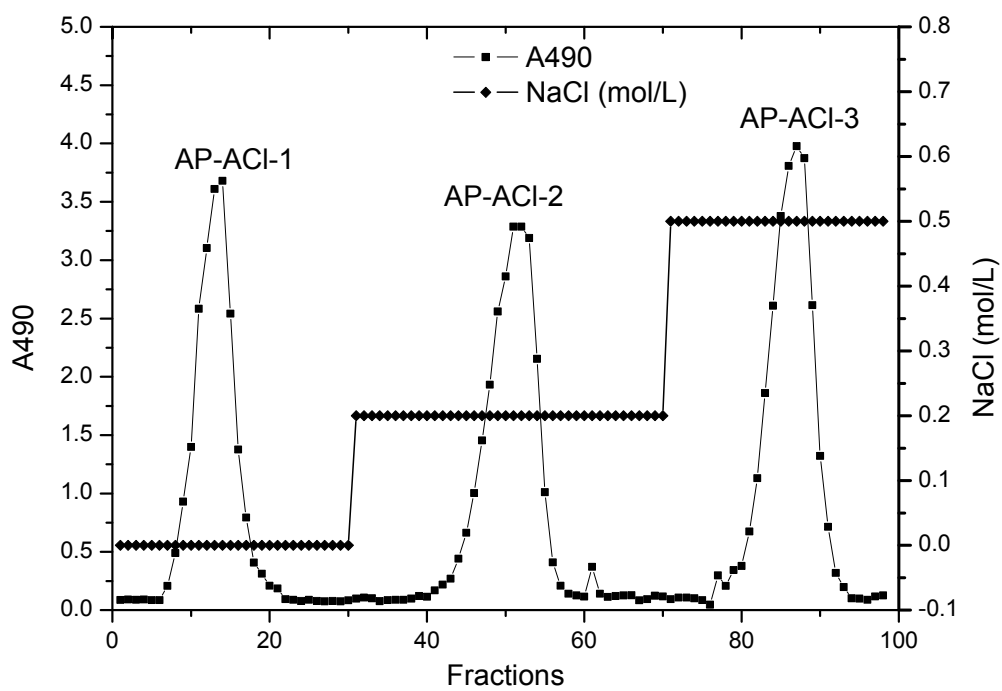


Figure S3. Elution curve of crude polysaccharide AP purified on the DEAE-sepharose fast flow column.