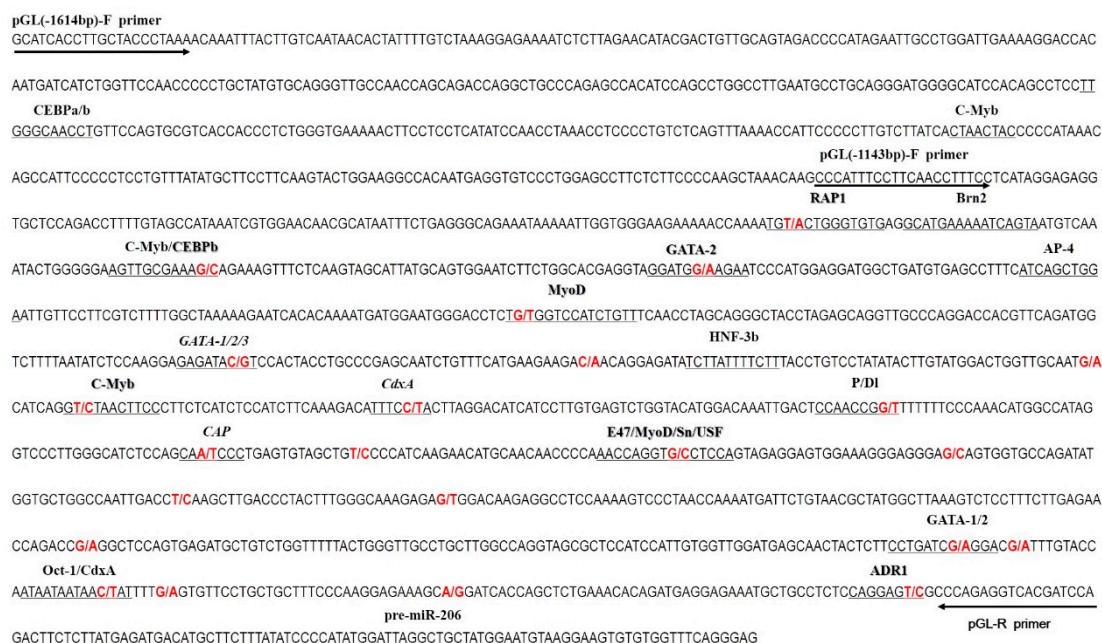
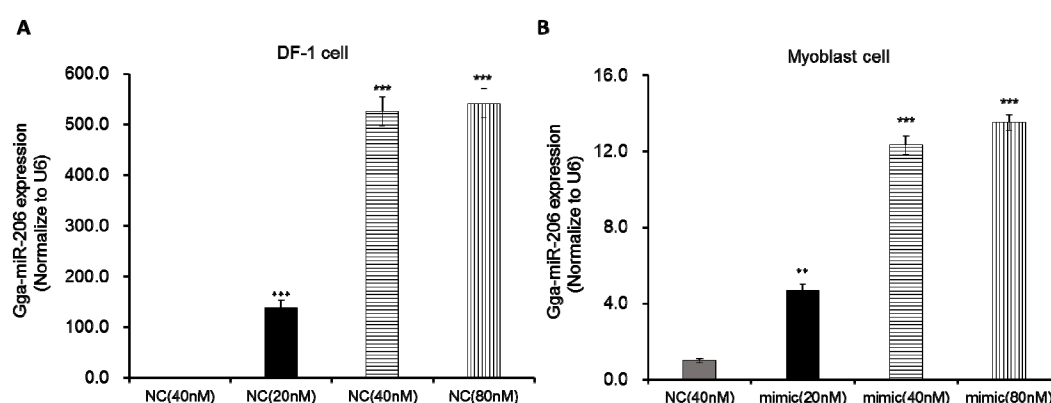


# Supplementary Materials: Characterization of miR-206 Promoter and Its Association with Birthweight in Chicken

Xinzheng Jia, Huiran Lin, Bahareldin Ali Abdalla and Qinghua Nie



**Figure S1.** Transcriptional regulatory elements and mutations in the promoter of gga-miR-206. The underline means the regulatory elements recognized by related transcriptional factors, which were predicted by TFSEARCH 1.3 system [18] with the threshold more than 85.0 points in the 1200 bp upstream region. Bases marked in red text mean a point mutation. Arrows indicate three primers used for promoter amplification.



**Figure S2.** (A) The expression changes of miR-206 were induced by various concentration of mimics in DF-1; (B) The expression changes of miR-206 were induced by various concentration of mimics in and myoblast cells. Three concentration gradient of mimic miRNAs (20, 40 and 80 nM) were transfected into DF-1 and myoblast cells for 36 h. In this panel, data are presented as mean  $\pm$  standard error (SE). \*\*  $p < 0.01$  and \*\*\*  $p < 0.001$  were estimated by Student's  $t$ -test ( $n = 3$ ).