

Fig.S1

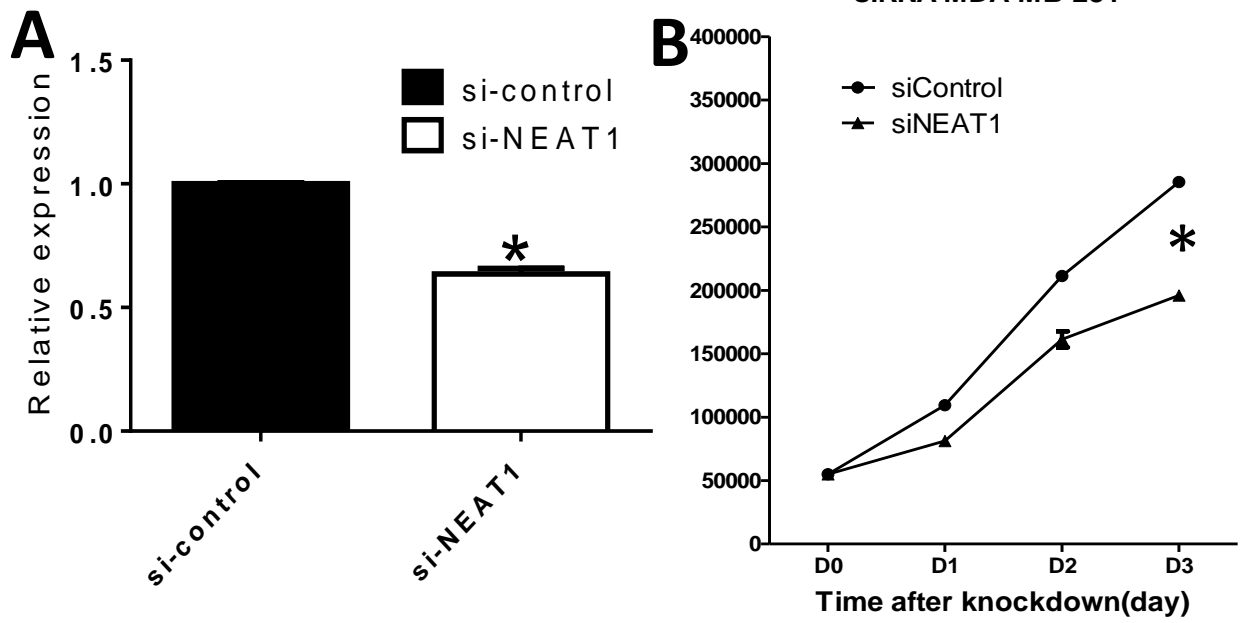
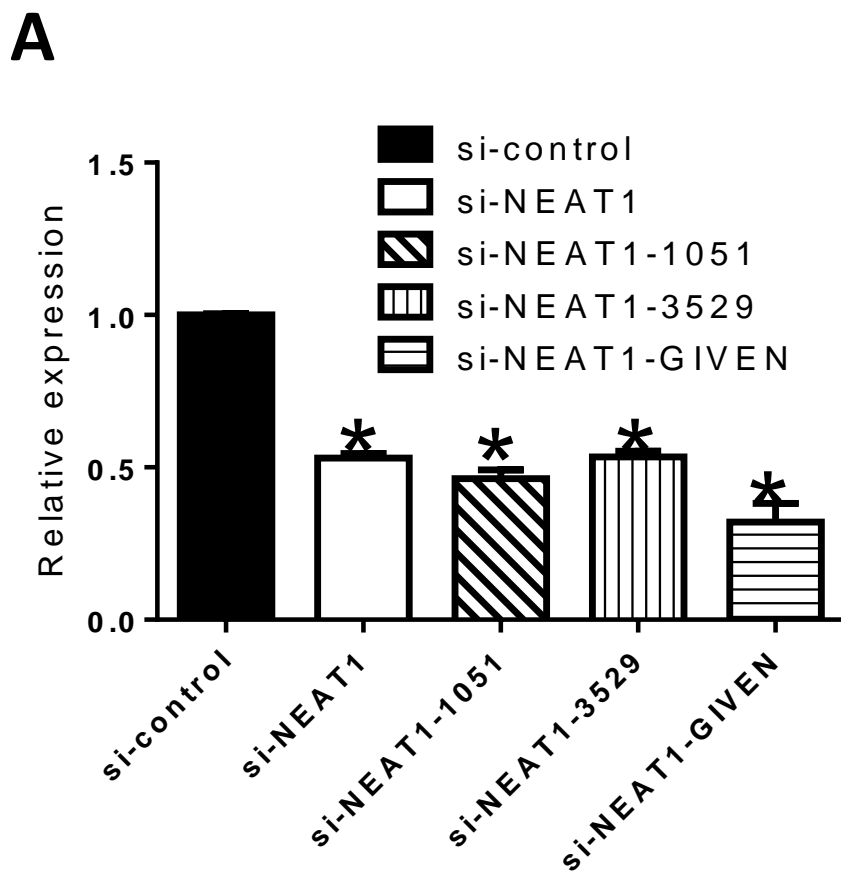


Fig.S2



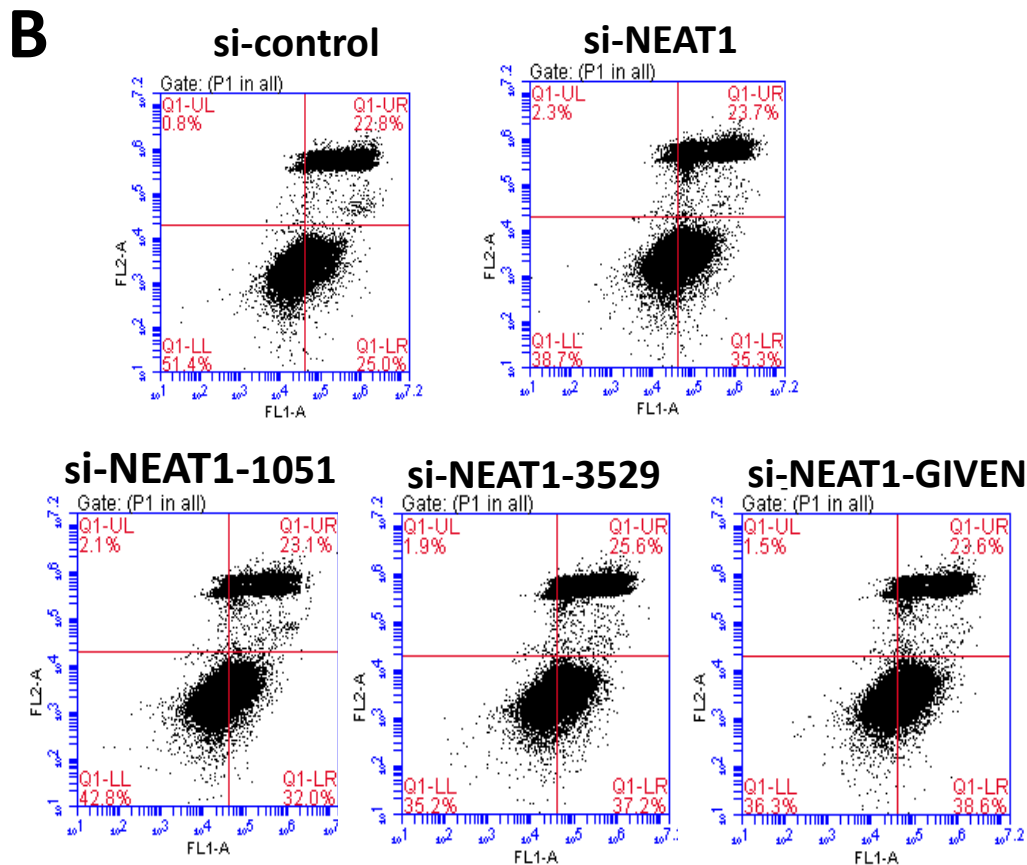


Figure legend

Figure S1. Knockdown of NEAT1 inhibited cell growth in MDA-MB231. MDA-MB231 cells were transfected with NEAT1-specific siRNA(50nM) and negative control siRNA(50nM). A) Knockdown efficiency was determined by qRT-PCR. B) The time-dependent effect of siRNA on cell growth is shown by the SRB assay. Results were quantitated from three independent experiments. Data are presented as means \pm SEM.

Figure S2. Cell apoptosis could be induced by treated with different si-NEAT1. MCF7 cells were transfected with NEAT1 50nM siRNAs targeted by different position of NEAT1. A) Knockdown efficiency was determined by qRT-PCR. B) Cell apoptosis was evaluated with Annexin-V and PI double-staining at 48 h by Flow cytometric analysis. Si-NEAT1-1051 and si-NEAT1-3529 stand for siRNA targeted the 1051 and 3529 position of NEAT1 RNA. Si-NEAT1-GIVEN represents the siRNA which used in the paper of Choudhry H et al, 2014.