

Fig. S9

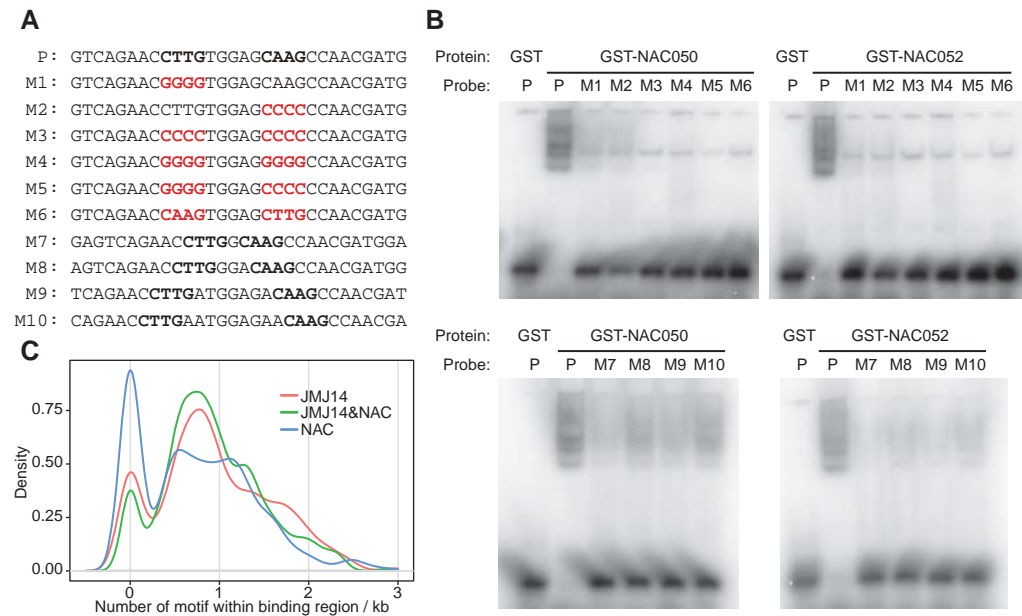


Fig. S9. (A) The DNA probe used for EMSA. P was the original sequence from *At1g72460*, a common target gene of NAC050, NAC052 and JMJ14. M1 to M10 contain different mutations of the core binding sequence. (B) The binding assay to different probes using 50ng of GST or GST-fused recombinant NAC050 and NAC052 showing that mutations of CTTGNNNNCAAG core sequence reduce the binding affinity of NAC050 and NAC052. (C) The CTTGNNNNCAAG motif density in the binding regions of JMJ14 alone (red), JMJ14 and NAC overlapping (green) and NAC alone (blue), respectively.