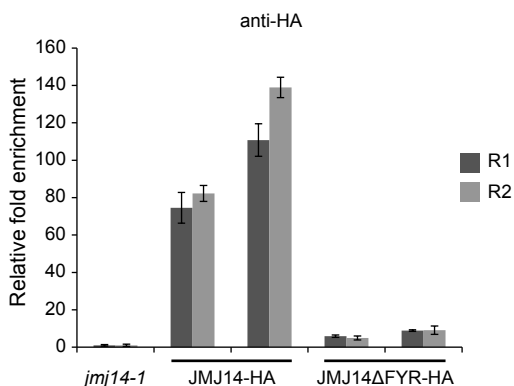
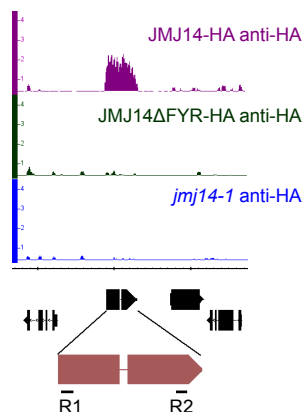
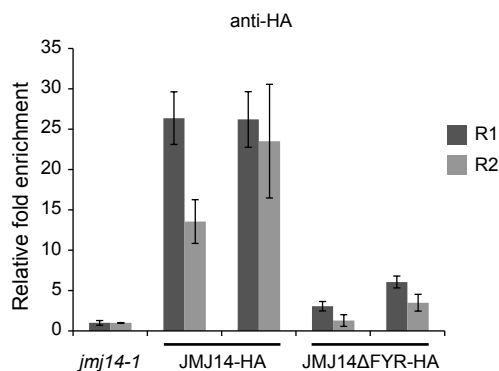
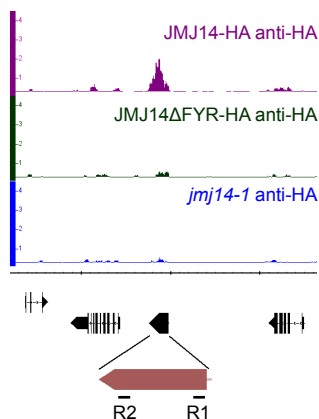


Fig. S3**A**

At1g72460

**B**

At2g32510

**C**

At5g45810

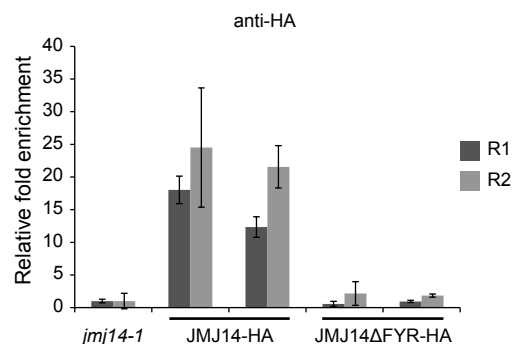
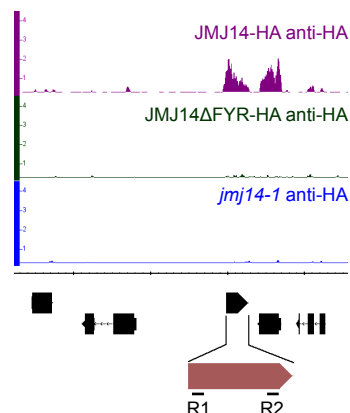


Fig. S3. The anti-HA ChIP-seq results of JMJ14-HA, JMJ14ΔFYR-HA and *jmj14-1* on genome browser (left) and the ChIP-qPCR validation results (right) of At1g72460 (A), At2g32510 (B) and At5g45810 (C). JMJ14-HA and JMJ14ΔFYR-HA indicates the P_{JMJ14} :JMJ14-HA *jmj14-1* and P_{JMJ14} :JMJ14ΔFYR-HA *jmj14-1* transgenic lines respectively. Two independent lines of each transgenic plants were used in the qPCR. R1 and R2 indicate the 5' and 3' regions of the genes which were showed in the left. FYR represents FYRN and FYRC domains.