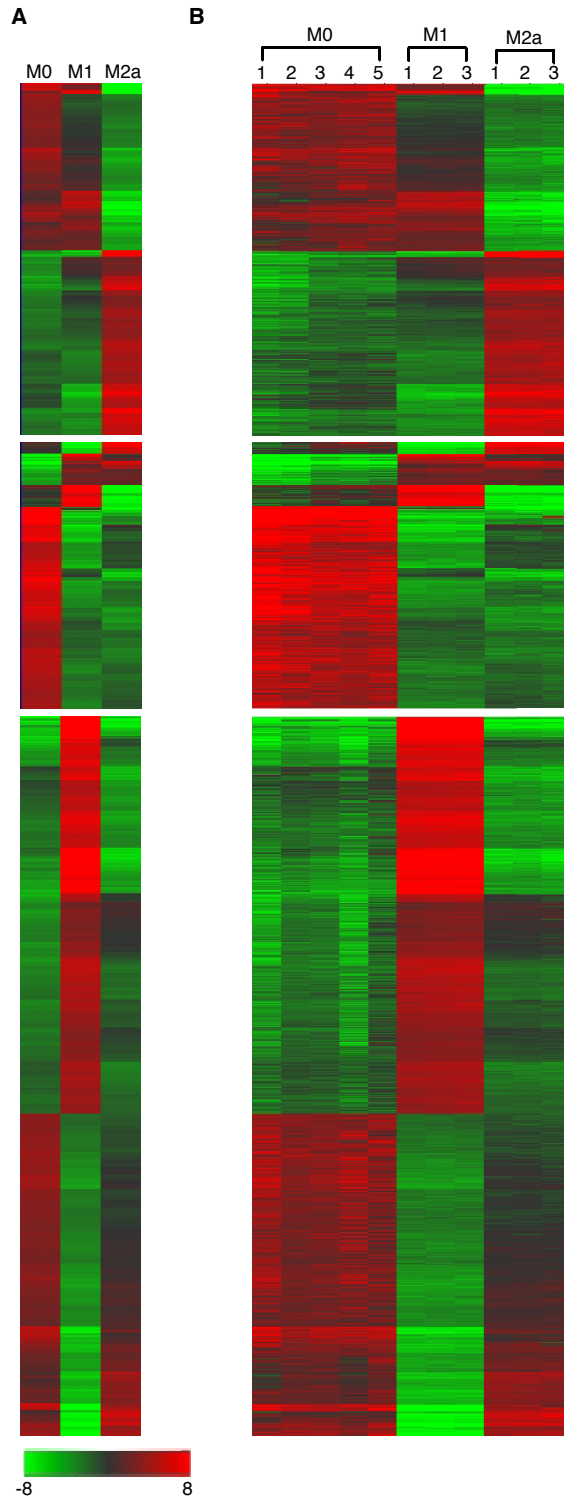


**Figure S1. Signs of colitis develop in *Rag1*<sup>-/-</sup>C57BL/6 and *Rag1*<sup>-/-</sup> BALB/c Mice after transfer of naïve T cells. (A)** Curve fit analysis of the weight change over time after colitis induction (*Rag1*<sup>-/-</sup> C57BL/6, n= 19 and *Rag1*<sup>-/-</sup> BALB/c n=22). **(B)** Colitis scores from mice at days 10 (n=3 for both), 20 (n=3 for both), 30 (n=5 for both) and 40 (n=4 for *Rag1*<sup>-/-</sup> C57BL/6 and n=7 for *Rag1*<sup>-/-</sup> BALB/c). **(C)** Representative H&E stained colon sections from mice in B. **(D)** Representative flow cytometry analysis of IL-17A and IFN- $\gamma$  expression. Numbers in quadrants are averages. **(E-F)** Frequency (E) and number (F) of CD4<sup>+</sup> T cells producing IFN- $\gamma$  in SP and MLN. **(G-H)** Frequency (G) and (H) number of CD4<sup>+</sup>IFN- $\gamma$ <sup>+</sup>IL-17A<sup>+</sup> T cells in SP and MLN. **(I-J)** Frequency (I) and number (J) of CD4<sup>+</sup>IFN- $\gamma$ <sup>+</sup> T cells in SI and colon lamina propria. **(K-L)** Frequency (K) and number (L) of CD4<sup>+</sup>IFN- $\gamma$ <sup>+</sup>IL-17A<sup>+</sup> T cells in SI and colon lamina propria. **(M)** Frequency of MLN iReg cells expressing Ki-67 and Bcl-2. Each symbol represents an individual mouse, and small horizontal lines represent the mean. \*p < 0.05, \*\*p < 0.005, \*\*\*p < 0.0005 and ns, not significant; Mann-Whitney test or t-test.



**Figure S2. Gene expression profiles of macrophage subsets.** (A) Heat map generated by comparing the average gene expression for each macrophage subset to the average of all experiments (n=11) as the common standard mean. The probe sets shown are those that revealed a twofold or greater difference in expression ( $|\log_2 \text{ratio}| > 1.0$ ) and rank product FDR <10% relative to M0 cells (Figure 3). (B) Heat map comparing each individual gene array to the common standard mean.