

SUPPLEMENTAL DIGITAL CONTENT 6

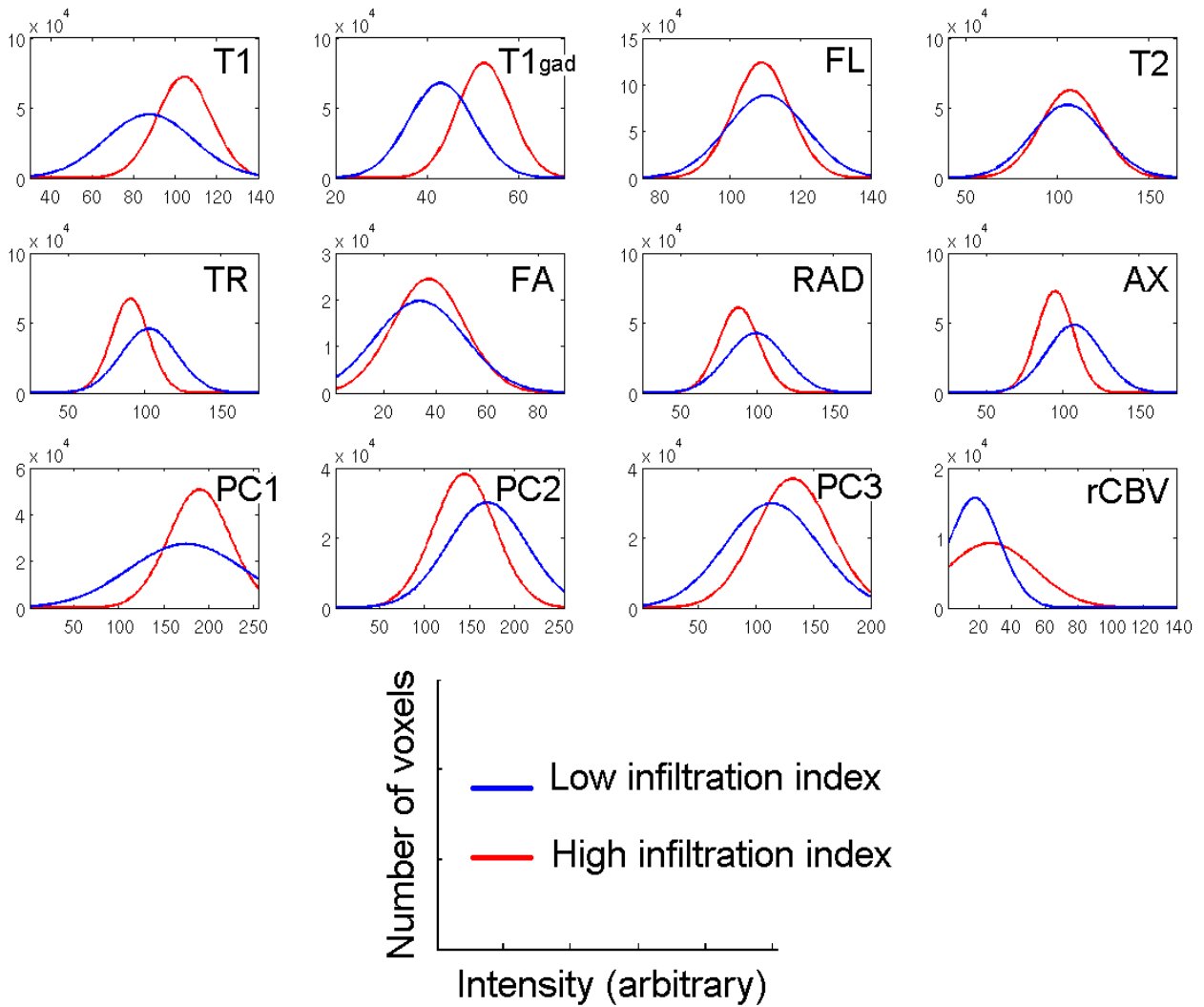


FIGURE. Imaging characteristics of low and high infiltration index regions. The graphs demonstrate the characteristics of the high infiltration index and low infiltration index regions within the peritumoral edema. Red represents the probability density function of the infiltrated tissues, while blue represents the non-infiltrated tissues. **Top left to bottom right**, T₁-weighted, T₁-weighted contrast-enhanced, T₂ fluid-attenuated inversion recovery, T₂-weighted, trace, fractional anisotropy, radial diffusivity, axial diffusivity, first three principal components, and relative cerebral blood volume. X-axis shows the intensity in arbitrary unit scaled between 0-255 and Y-axis is the number of voxels.