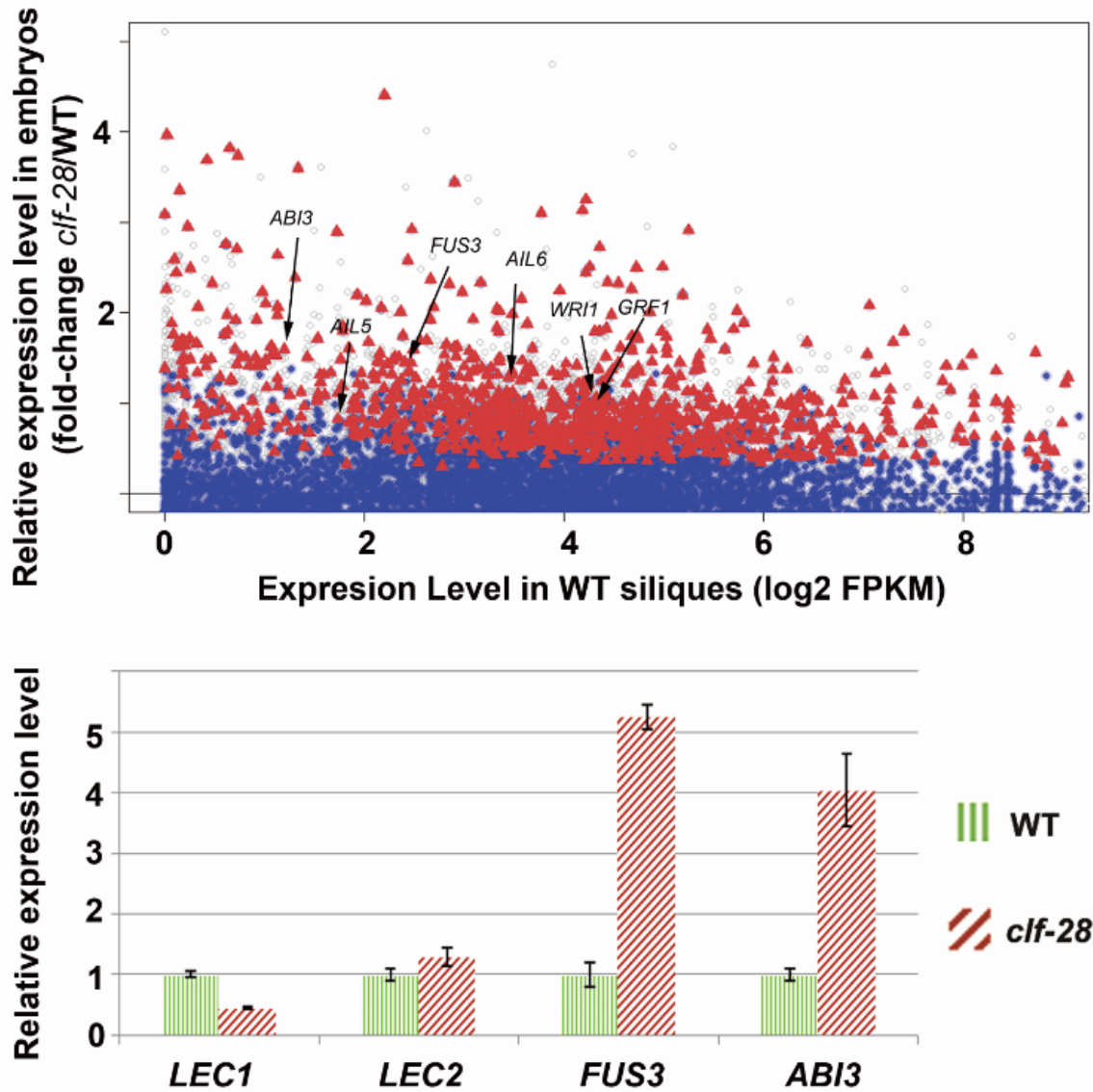


1 Supplemental Figure 4



2

3 Supplemental Figure 4. Regulation of CRGs by *CLF* in embryos at the mature-  
4 green stage

5 The upper panel shows relative expression levels of genes determined by strand-specific  
6 RNA-seq experiment in siliques and isolated embryos at the mature-green stage. Genes  
7 significantly de-repressed in both siliques and isolated embryos are presented by red  
8 triangles (DESeq *P*-value < 0.01, FDR < 0.1). Those only significantly de-repressed in  
9 siliques are presented by blue sold circle. Grey circle gives insignificant detections.  
10 Several important regulatory genes are indicated by black arrows. The lower panel shows  
11 qRT-PCR verification of 4 embryo developmental genes in isolated embryos of WT and  
12 *clf-28*. Error-bar represents stand error (n=3).