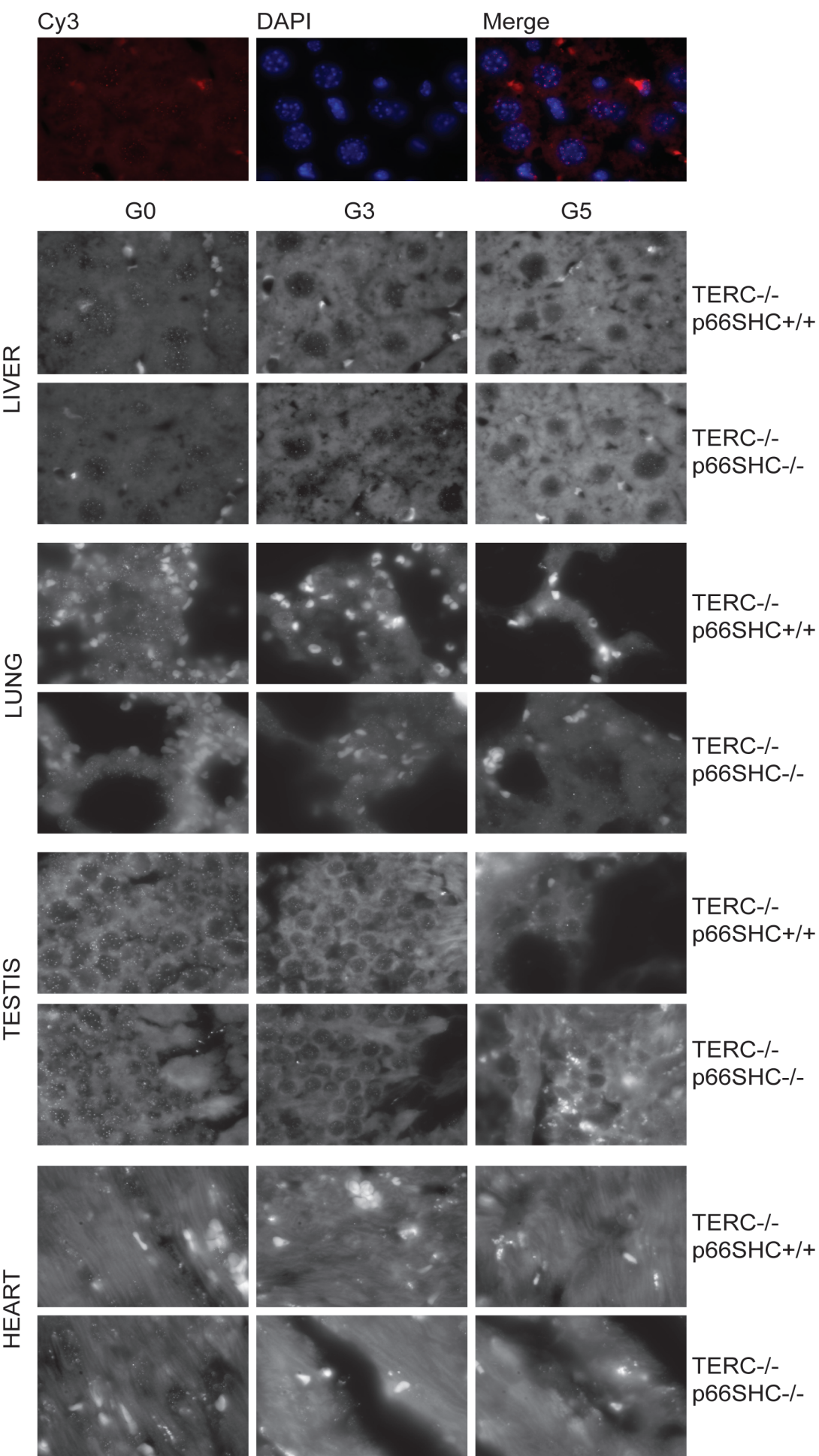
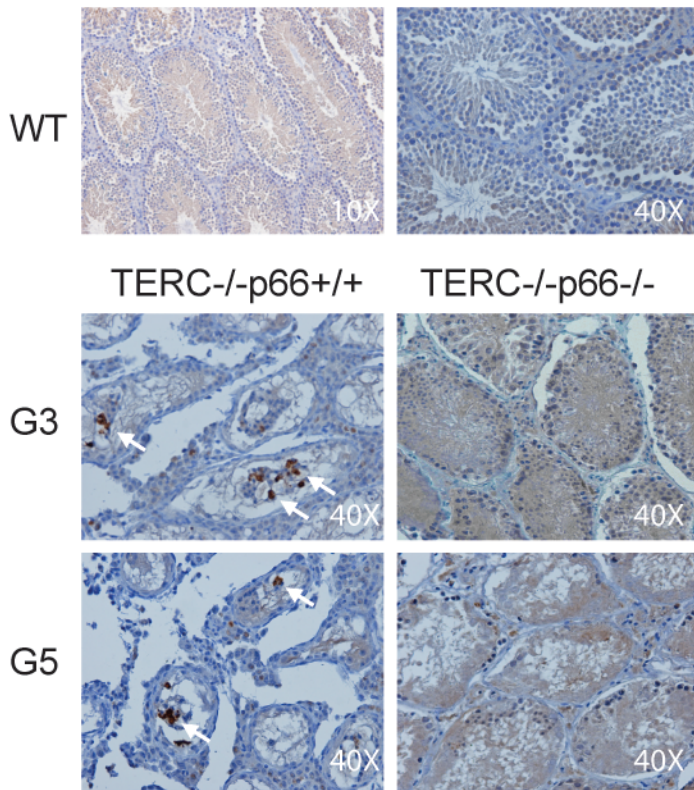


**Supplementary Figure 1.** Representative FISH images of sections of different organs from G0, G3 and G5 TERC<sup>-/-</sup>-P66SHC<sup>+/+</sup> and TERC<sup>-/-</sup>-p66SHC<sup>-/-</sup> mice, stained with the Cy3 conjugated TelC PNA probe (grayscale panels), the colored panels show Cy3 and DAPI fluorescence pattern in a stained section of WT liver as control.

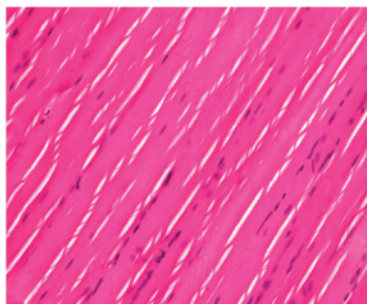


**Supplementary Figure 2.** IHC analysis of testis slices from G3 and G5 TERC<sup>-/-</sup> p66SHC<sup>+/+</sup> and TERC<sup>-/-</sup> p66SHC<sup>-/-</sup> mice with anti-activated caspase 3 antibody. The arrows indicate positive cells.

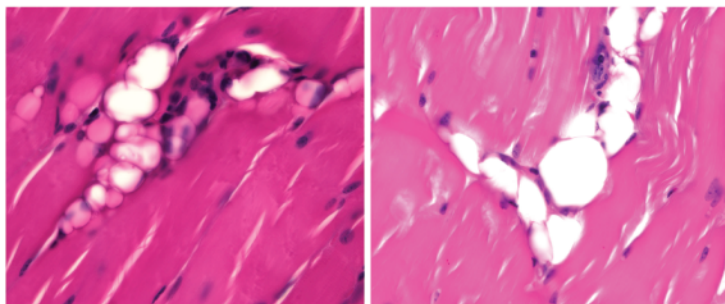


**Supplementary Figure 3.** HE stained sections of quadriceps from G0 and G3 TERC<sup>-/-</sup>-p66SHC<sup>+/+</sup> or p66SHC<sup>-/-</sup> mice

GO TERC<sup>-/-</sup>-P66SHC<sup>+/+</sup>



G3 TERC<sup>-/-</sup>-P66SHC<sup>+/+</sup>



GO TERC<sup>-/-</sup>-P66SHC<sup>-/-</sup>

