

Wearable 3-D Photoacoustic Tomography for Functional Brain Imaging in Behaving Rats

Jianbo Tang¹, Jason E. Coleman², Xianjin Dai¹, and Huabei Jiang^{1,3*}

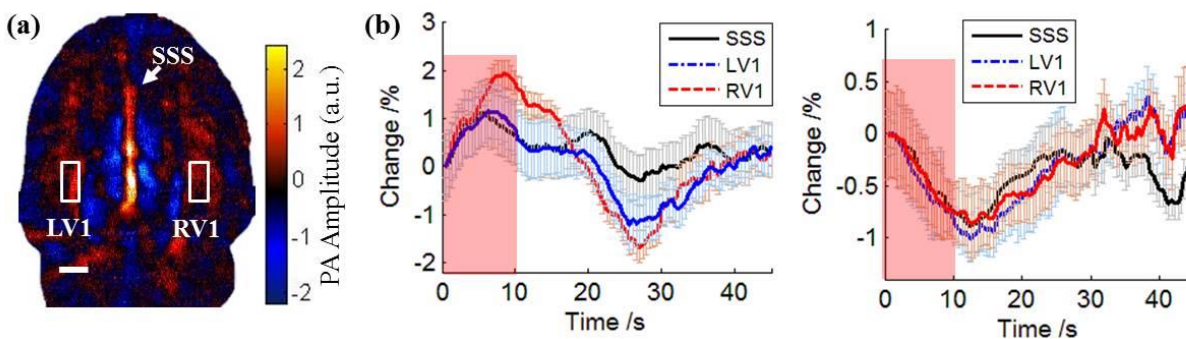
¹J. Crayton Pruitt Family Department of Biomedical Engineering, University of Florida, Gainesville, FL 32611, USA

²Child Health Research Institute, Department of Pediatrics, College of Medicine, University of Florida, Gainesville, FL 32610, USA

³School of Physical Electronics, University of Electronic Science and Technology of China, Chengdu, Sichuan, China

*Corresponding Author: Huabei Jiang, E-mail: hjiang@bme.ufl.edu.

Supplementary figure



SupFig. 1 Visual stimulation result for rat #2

(a) The wPAT image from top layer (cortex layer). Three ROIs were marked on the wPAT image. RV1: right primary visual cortex (V1); LV1: left primary visual cortex (V1); SSS: superior sagittal sinus. (b) CBV response averaged across the 9 trials (superimposed with standard error of the mean, n=9) for all ROIs. Right, CBV response under 710 nm light excitation (HbR); Left, CBV response under 840 nm light excitation (HbO). Length of scalebar: 1 mm. The red shading represents 10 s stimulus.