

Seasonal phoresy as an overwintering strategy of a phytophagous mite

Sai Liu, Jianling Li, Kun Guo, Haili Qiao, Rong Xu, Jianmin Chen, Changqing Xu*,

Jun Chen*

Figure S1

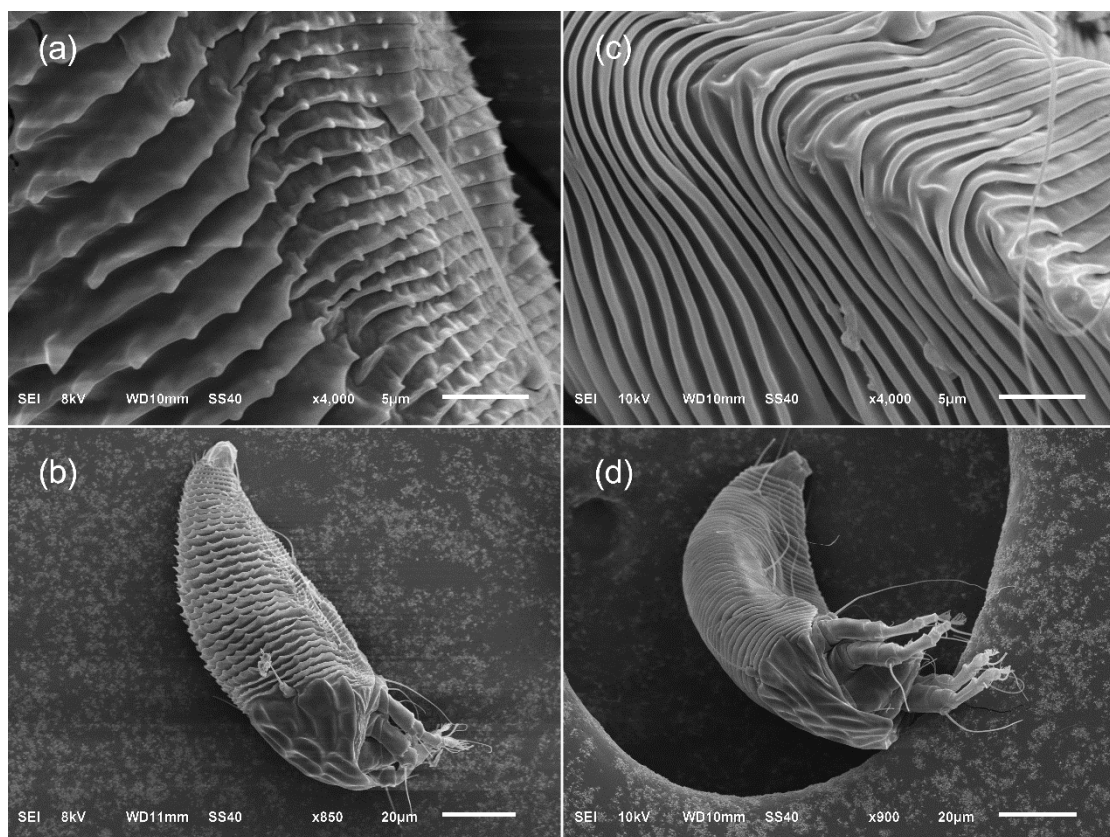


Figure S1. The microtubercles and slide views of the protogynes of *A. lycii* (a) (b) in summer and the deutogynes (c) (d) in winter. The deutogynes have significantly reduced microtuberculation.