

**Formulation:** 9/0R2575/00  
**Category :** Confectionary  
**Type :** Bilberry Fruit Concentrate With Dried Billberries

Position	Raw Material	%
1	(602589) BLUEBERRY DRIED SIEVED	59,630
2	(122112) BLUEBERRY JUICE CONC. 65BX	25,900
3	RASINS	4,650
4	SUGAR BEET SYRUP	4,650
5	ICING SUGAR	4,650
6	ACESULFAM K	0,020
7	(653517) Bilberry/Blueberry Flavouring	0,500
		100,000

Position	Suppliers
1,2,7	Symrise GmbH & Co. KG, DE-37603 Holzminden

### Production Method

### Preparation

Per one daily dosage 4 portions, each 40g, are recommended, (corresponding 95 g dried billberries).

Our suggestions have been carefully tested, but are without obligation. It is the duty of the manufacturer to test the finished product and check the patent situation. The list of suppliers is not a value of judgment.

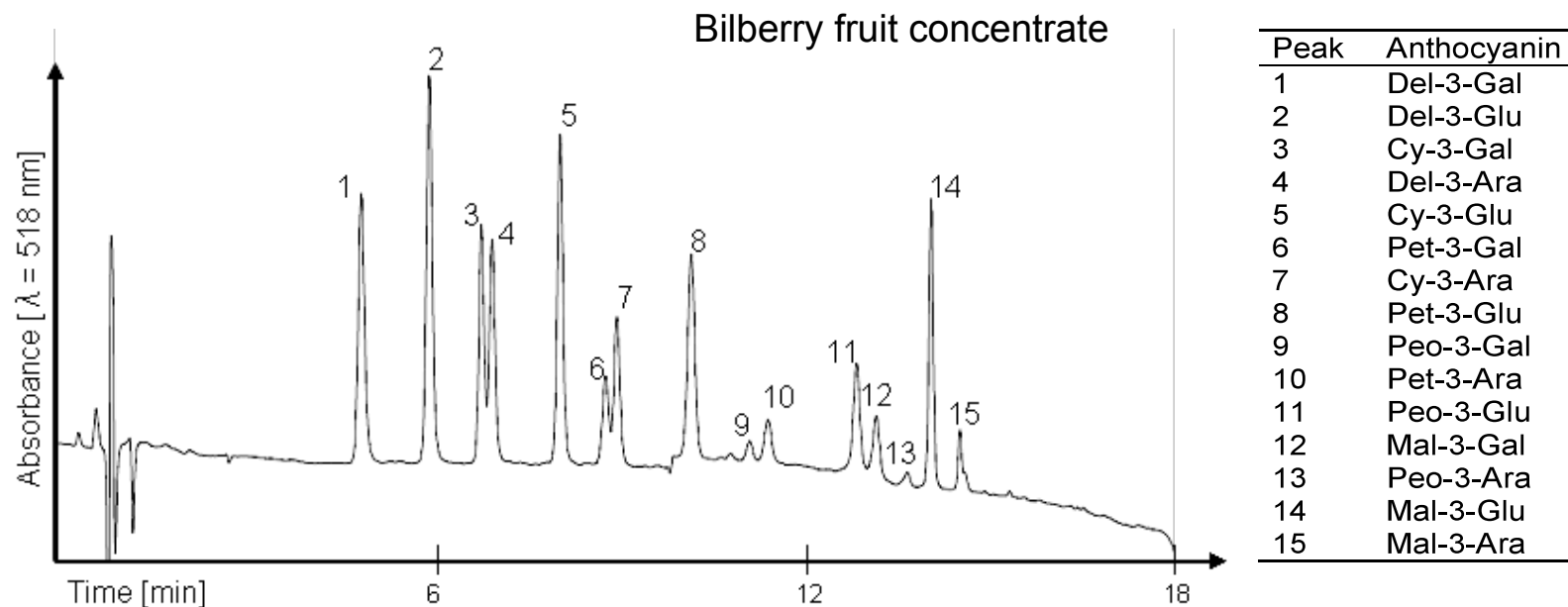
# BILBERRY FRUIT PREPARATION

## QUANTITATION OF ANTHOCYANINS

### CONDITIONS

- Gradient elution: ethanol/water/formic acid
- Column material: fused core
- Extraction solution: ethanol/water/phosphoric acid/hydrochloric acid

### HPLC OF FRUIT CONCENTRATE



The anthocyanin pattern of the Bilberry fruit preparation is comparable to the Actiplants® Bilberry extract 25 %