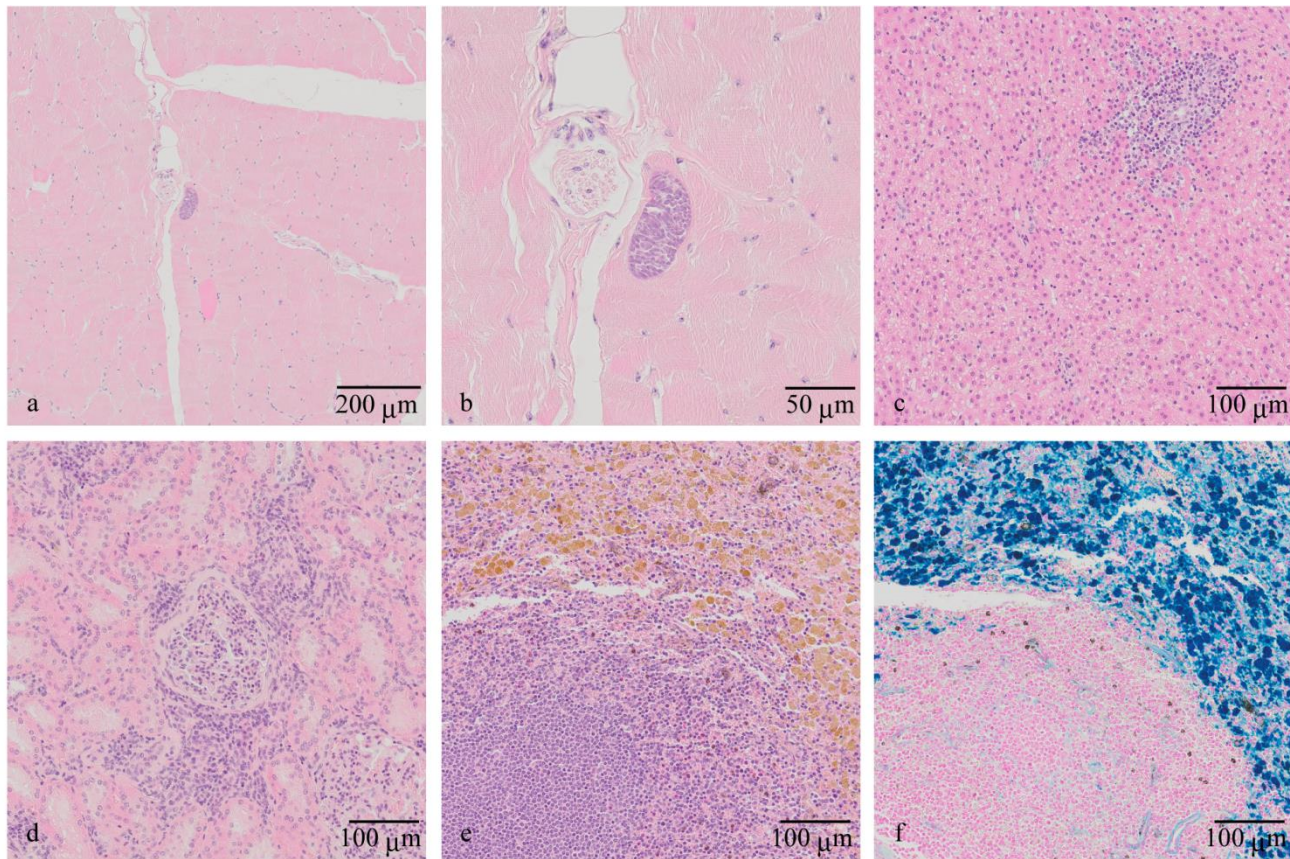


**S5 Fig. Histological findings observed in each tissue**



**a-c.** H&E staining. **f.** Iron staining by Prussian blue staining. **a, b.** *Sarcocystis* cysts in the H1 biceps femoris muscle. **c.** inflammatory cell infiltration in the L6 liver. **d.** inflammatory cell infiltration of kidney in the L2 kidney. **e, f.** Hem siderin deposition in the L5 Spleen.