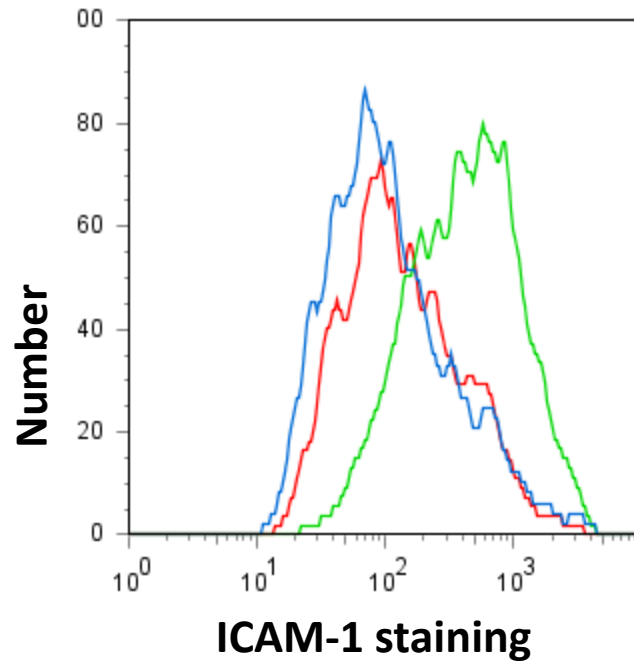


MPs derived from control induce ICAM expression on huDMVECs



Flow cytometry histogram showing ICAM-1 immunostaining of huDMVEC after incubation with MPs derived from control person (green curve) or MP-depleted plasma from the same person (red curve) (10:1 MP:huDMVEC ratio). Untreated cells are shown as a control (blue curve)