

Figure S1. Dynamics over time of 4xMIC and 16xMIC ATM resistant mutants of biofilms treated with peak concentrations of ATM (700 mg/L), TOB (1000 mg/L), sequential therapy (A/T/A or T/A/T) or control without antibiotics. For this purpose detached and collected biofilms were plated in MHA supplemented with 4-fold and 16-fold MIC concentrations of ATM at time-points t_0 , t_2 , t_4 and t_6 . The results represent the medians (bars) of at least three independent experiments.

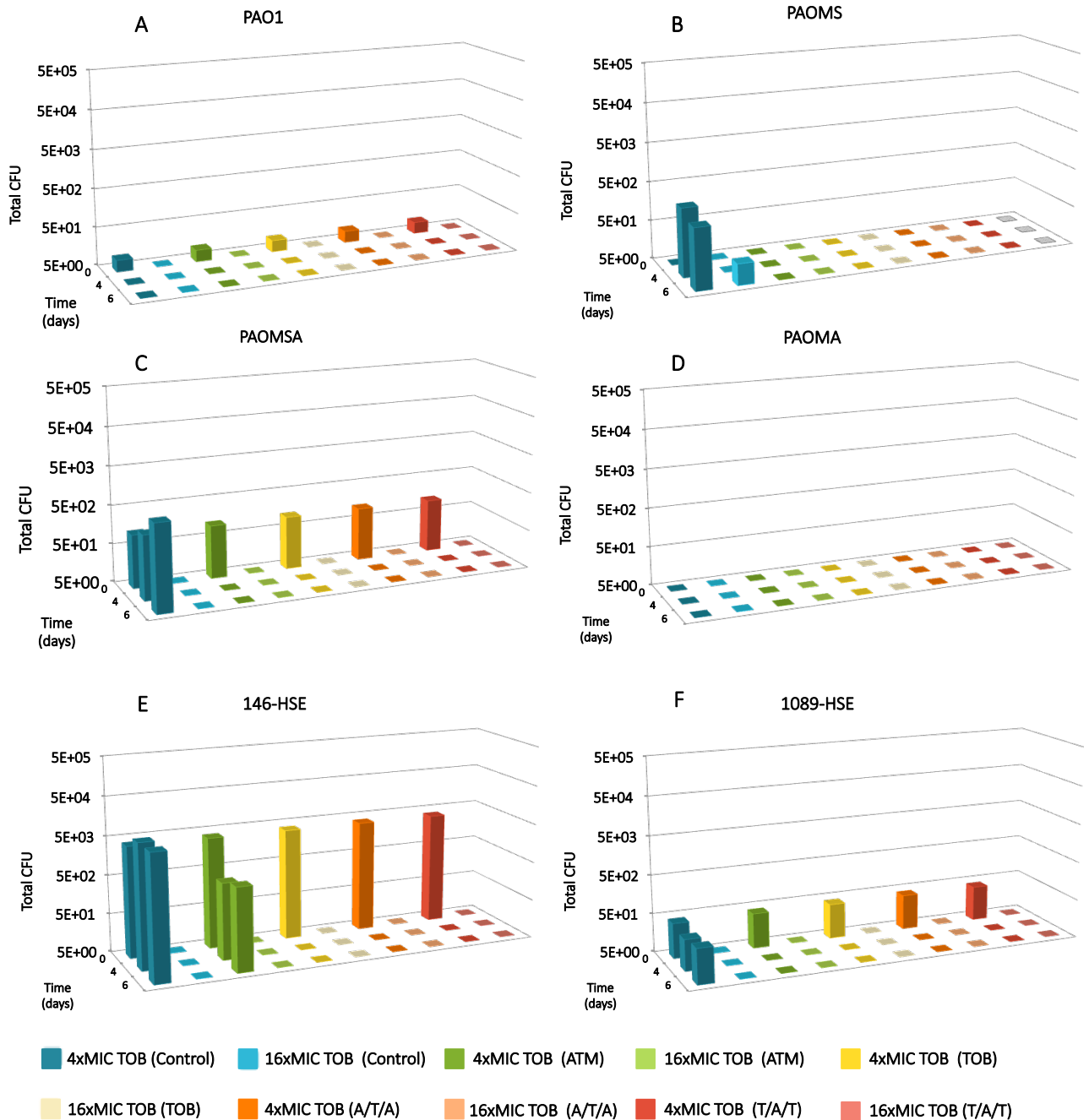


Figure S2. Dynamics over time of 4xMIC and 16xMIC TOB resistant mutants of biofilms treated with peak concentrations of ATM (700 mg/L), TOB (1000 mg/L), sequential therapy (A/T/A or T/A/T) or control without antibiotics. For this purpose detached and collected biofilms were plated in MHA supplemented with 4-fold and 16-fold MIC concentrations of TOB at time-points t₀, t₂, t₄ and t₆. The results represent the medians (bars) of at least three independent experiments.

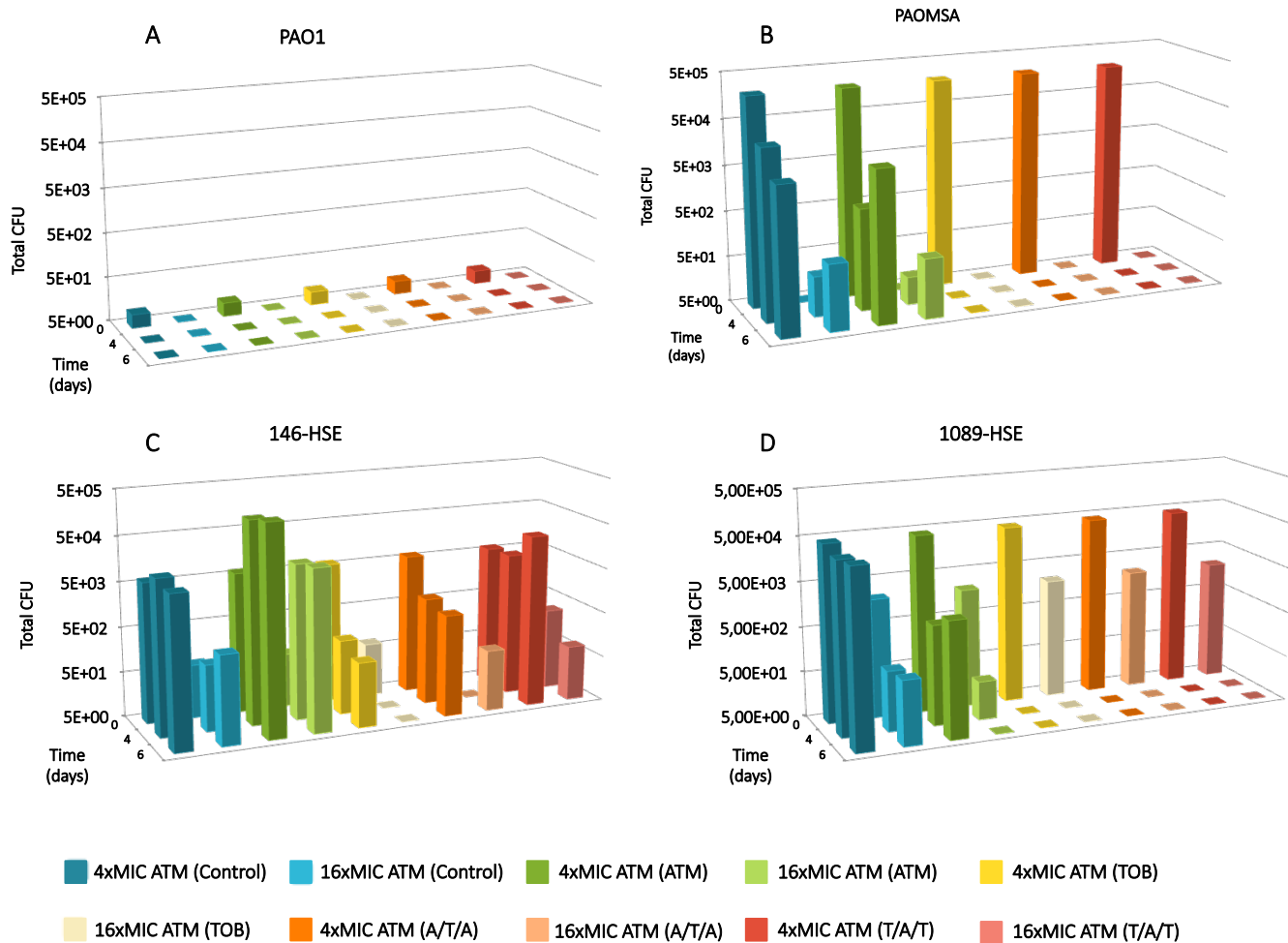


Figure S3. Dynamics over time of 4xMIC and 16xMIC ATM resistant mutants of biofilms treated with peak concentrations of ATM (70 mg/L), TOB (100 mg/L), sequential therapy (A/T/A or T/A/T) or control without antibiotics. For this purpose detached and collected biofilms were plated in MHA supplemented with 4-fold and 16-fold MIC concentrations of ATM at time-points t_0 , t_2 , t_4 and t_6 . The results represent the medians (bars) of at least three independent experiments.

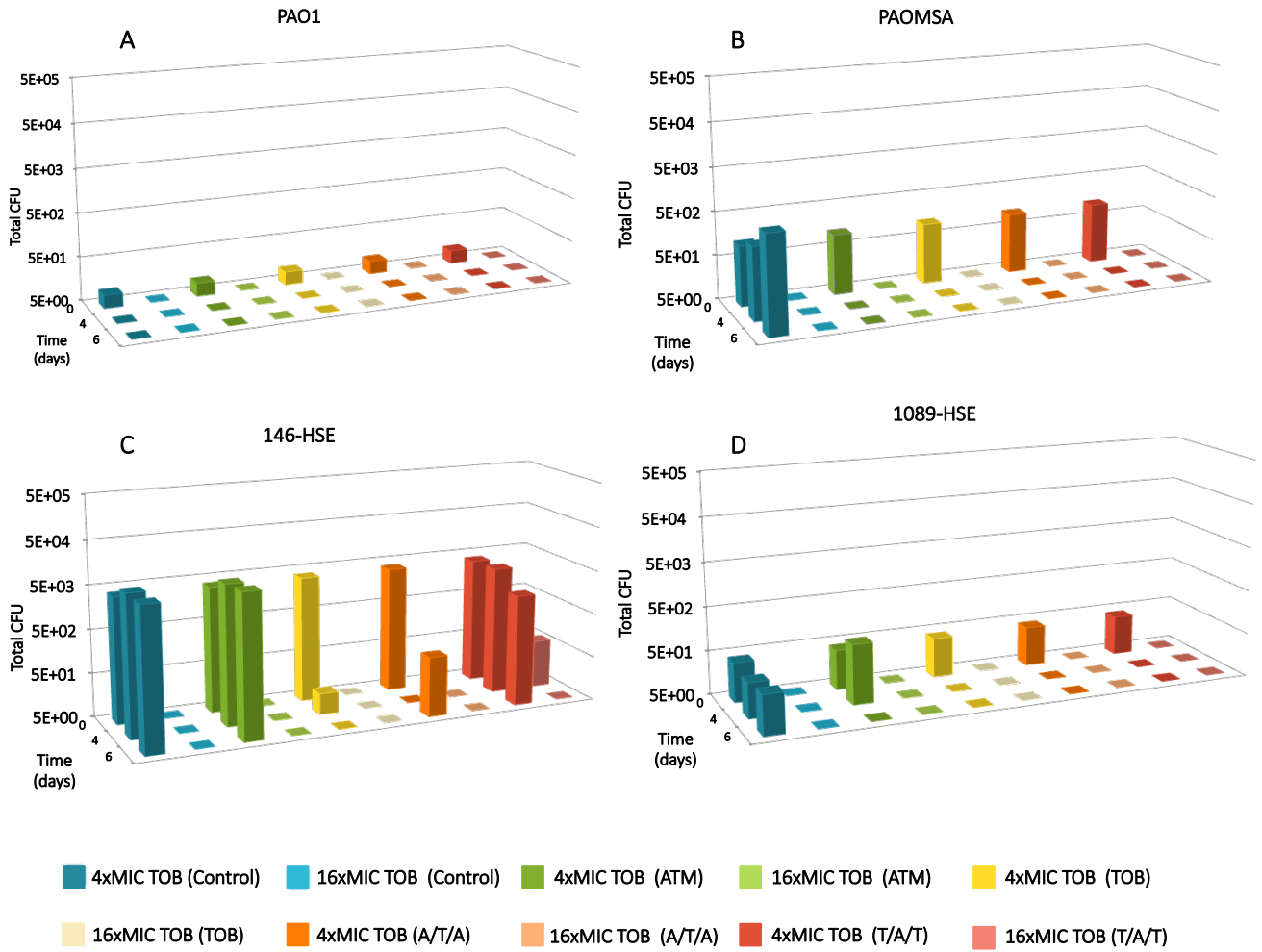


Figure S4. Dynamics over time of 4xMIC and 16xMIC TOB resistant mutants of biofilms treated with peak concentrations of ATM (70 mg/L), TOB (100 mg/L), sequential therapy (A/T/A or T/A/T) or control without antibiotics. For this purpose detached and collected biofilms were plated in MHA supplemented with 4-fold and 16-fold MIC concentrations of TOB at time-points t₀, t₂, t₄ and t₆. The results represent the medians (bars) of at least three independent experiments.

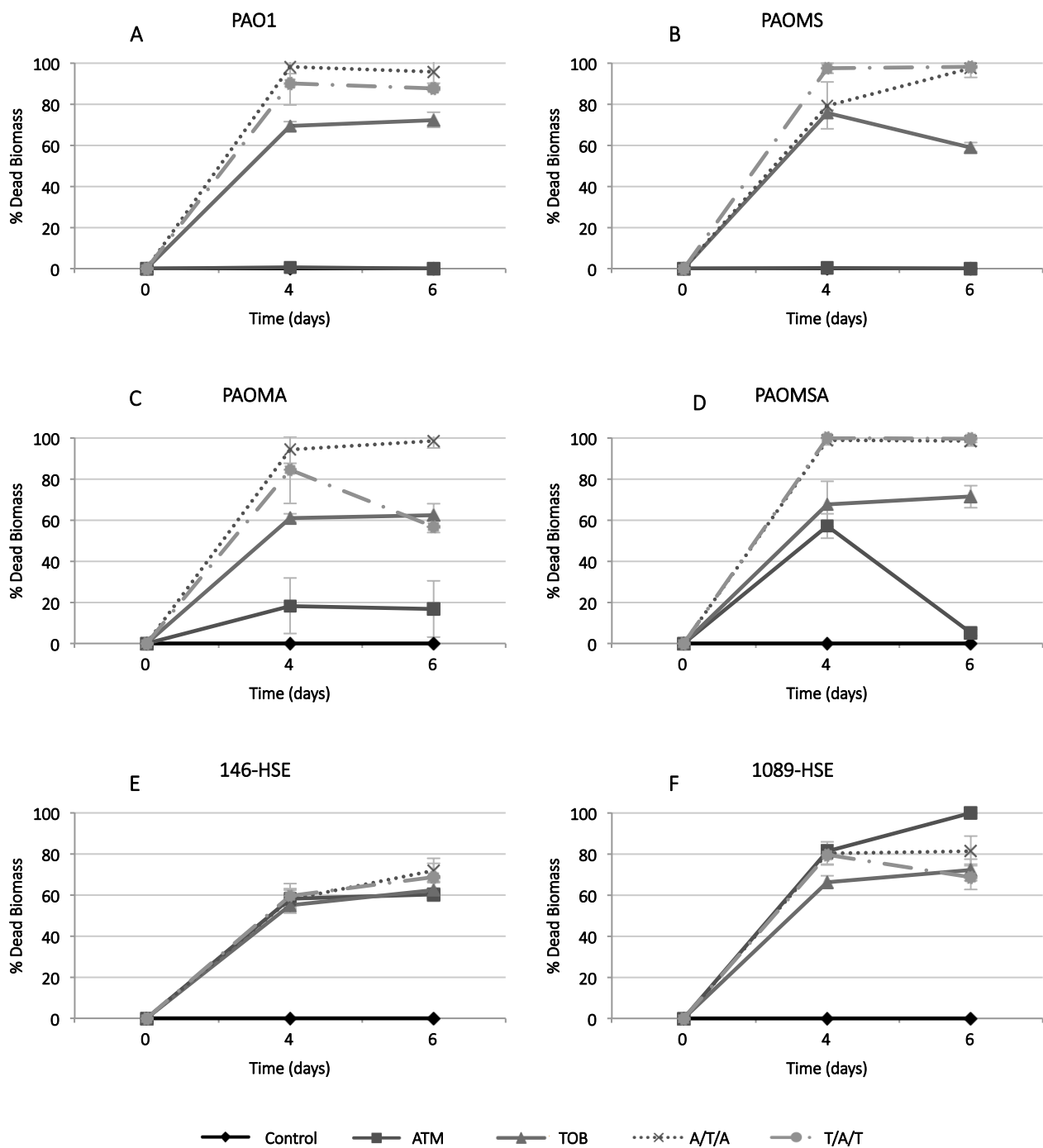


Figure S5. Percentage of dead biomass relative to total biomass of biofilms treated with peak concentrations (ATM 700 mg/L and TOB 1000 mg/L). The results represent the medians (points) and interquartile range (error bars) of at least three independent experiments.

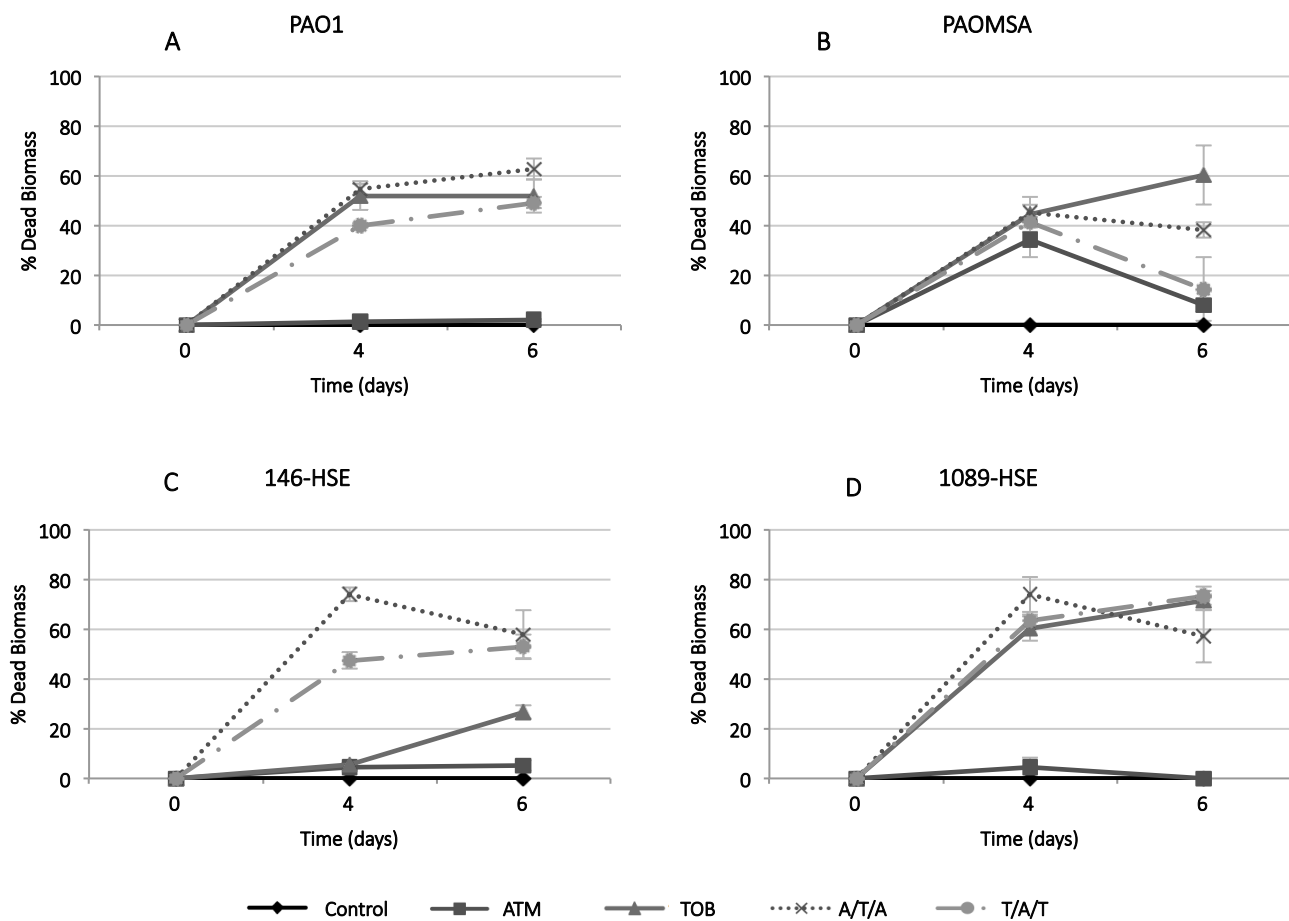


Figure S6. Percentage of dead biomass relative to total biomass of biofilms treated with 1/10-peak concentrations (ATM 70 mg/L and TOB 100 mg/L). The results represent the medians (points) and interquartile range (error bars) of at least three independent experiments.