

Fig S1. CpClec-Fc is post-translationally modified by O- and N-glycosylation. Recombinant CpClec-Fc (lanes 1-3) or Fc alone (lanes 5-7) were incubated with neuraminidase and O-glycosidase (lanes 2 and 6) or PNGaseF (lanes 3 and 7) and analyzed by SDS-PAGE and Coomassie blue staining. CpClec-Fc is marked with “*”. Fc alone is marked with “#”. Additional bands are neuraminidase (43 kDa), O-glycosidase (147 kDa), and PNGase F (36 kDa).

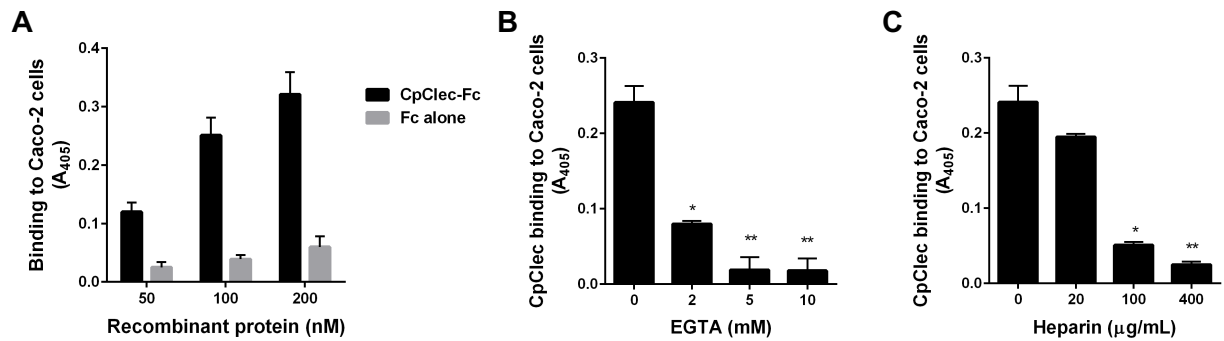


Fig S2. CpClec-Fc binding to Caco-2 cells is dose-dependent, calcium-dependent, and inhibited by heparin. A: Fixed Caco-2 cells were incubated with CpClec-Fc or Fc alone, and binding was quantified by ELISA. B and C: CpClec-Fc or Fc alone were incubated with (B) EGTA or (C) heparin, and binding was quantified by ELISA. CpClec-Fc binding was normalized to binding of Fc alone. Data represent mean + SEM. * $P < 0.05$, ** $P < 0.005$ compared to binding in the control (buffer or medium alone).

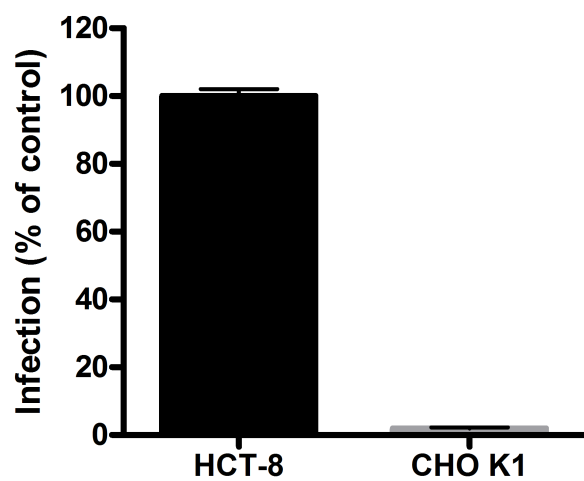


Fig S3. *C. parvum* does not infect CHO K1 cells. HCT-8 and CHO K1 cells were infected with *C. parvum* oocysts and infection quantified by fluorescence microscopy. Data represent mean + SEM.

Table S1. CpClec-Fc does not bind to glycans present on the Consortium for Functional Glycomics glycan array.

Glycan	AvgMeanS-B w/o MIN/MAX	StDev
Neu5Acb-Sp8	1195	525
GlcNAca1-4Galb1-3GalNAc-Sp14	1088	130
GlcNAcb1-4GlcNAcb-Sp10	638	29
GlcNAca1-4Galb1-4GlcNAcb1-3Galb1-4GlcNAcb-	138	21
GlcNAca1-4Galb1-4GlcNAcb1-3Galb1-4GlcNAcb1-3Galb1-4GlcNAcb-Sp0	109	23
Neu5Aca2-8Neu5Aca2-8Neu5Acb-Sp8	76	77
Galb1-4GlcNAcb1-6(Galb1-3)GalNAc-Sp14	59	34
Gala1-3(Fuca1-2)Galb1-4GlcNAcb1-6(Gala1-3(Fuca1-2)Galb1-4GlcNAcb1-3)GalNAc-Sp14	58	26
Glca1-4Glc-Sp8	57	15
GlcNAcb1-3Galb1-4GlcNAcb1-2Mana1-6(GlcNAcb1-3Galb1-4GlcNAcb1-2Mana1-3)Manb1-4GlcNAcb1-4(Fuca1-6)GlcNAcb-Sp24	57	39
Gala-Sp8	53	18
GlcNAca1-4Galb1-4GlcNAcb1-3Galb1-4(Fuca1-3)GlcNAcb1-3Galb1-4(Fuca1-3)GlcNAcb-Sp0	53	19
Galb1-4(Fuca1-3)GlcNAcb1-2Mana1-6(Galb1-4(Fuca1-3)GlcNAcb1-2Mana1-3)Manb1-4GlcNAcb1-4(Fuca1-6)GlcNAcb-Sp22	51	39
Galb1-4GlcNAcb1-3Galb1-4GlcNAcb1-6(Galb1-4GlcNAcb1-3Galb1-4GlcNAcb1-2)Mana1-6(Galb1-4GlcNAcb1-3Galb1-4GlcNAcb1-2Mana1-	48	12
Fuca1-2Galb1-4GlcNAcb1-6GalNAca-Sp14	47	20
Galb1-4GlcNAcb1-3Galb1-4GlcNAcb1-3Galb1-4GlcNAcb1-3Galb1-4GlcNAcb1-2Mana1-6(Galb1-4GlcNAcb1-3Galb1-4GlcNAcb1-3Galb1-4GlcNAcb1-3Galb1-4GlcNAcb1-2Mana1-	45	22
Galb1-3GlcNAcb1-2Mana-Sp0	43	21
Neu5Aca2-6(Neu5Aca2-3)GalNAca-Sp8	40	21
Neu5Gca2-3Galb1-3GlcNAcb-Sp0	40	13
Neu5Aca2-3Galb1-4GlcNAcb1-6(Galb1-	40	28
Neu5Aca2-6Galb1-4Glc-Sp0	37	33
GlcNAca1-4Galb1-4GlcNAcb-Sp0	37	26
GalNAcb1-3Gala1-4Galb1-4GlcNAcb-Sp0	35	20
(3S)GlcAb1-3Galb1-4GlcNAcb1-2Mana-Sp0	35	23
Galb1-4(6S)Glc-Sp0	35	17

Galb1-4GlcNAcb1-3Galb1-4GlcNAcb1-3Galb1-4GlcNAcb1-3Galb1-4GlcNAcb1-2Mana1-6(Galb1-4GlcNAcb1-3Galb1-4GlcNAcb1-3Galb1-4GlcNAcb1-3Galb1-4GlcNAcb1-2Mana1-	34	37
Fuca1-2(6S)Galb1-3(6S)GlcNAcb-Sp0	34	17
GlcNAcb1-2Mana1-6(GlcNAcb1-4(GlcNAcb1-2)Mana1-3)Manb1-4GlcNAcb1-4GlcNAc-Sp21	34	24
Galb1-4(Fuca1-3)(6S)Glc-Sp0	33	19
Neu5Aca2-3Galb1-4GlcNAcb1-3Galb-Sp8	32	25
KDNa2-3Galb1-3GlcNAcb-Sp0	31	16
(3S)GlcAb1-3Galb1-4GlcNAcb1-3Galb1-4Glc-Sp0	31	14
Galb1-4GlcNAcb1-3Galb1-4GlcNAcb1-3GalNAca-	31	15
Neu5Aca2-3Galb1-4GlcNAcb1-2Mana-Sp0	30	12
Galb1-4(Fuca1-3)GlcNAcb1-6GalNAc-Sp14	30	36
Neu5Aca2-3Galb1-3(Fuca1-4)GlcNAcb1-3Galb1-3(Fuca1-4)GlcNAcb-Sp0	30	8
Neu5Gca2-8Neu5Gca2-6Galb1-4GlcNAc-Sp0	30	18
(3S)GalNAcb1-4(Fuca1-3)GlcNAcb-Sp8	30	22
Galb1-3GalNAcb-Sp8	30	18
Galb1-3GalNAcb1-4(Neu5Aca2-8Neu5Aca2-8Neu5Aca2-3)Galb1-4Glc-Sp21	29	14
Galb1-4GlcNAcb1-3GalNAc-Sp14	29	30
Galb1-4GlcNAcb1-3Galb1-4GlcNAcb1-2Mana1-6(Galb1-4GlcNAcb1-3Galb1-4GlcNAcb1-2Mana1-3)Manb1-4GlcNAcb1-4GlcNAcb-Sp24	29	16
Galb1-4(6P)GlcNAcb-Sp0	28	21
Neu5Aca2-3Galb1-4GlcNAcb1-3Galb1-4GlcNAcb1-3Galb1-4GlcNAcb1-2Mana1-6(Neu5Aca2-3Galb1-4GlcNAcb1-3Galb1-4GlcNAcb1-3Galb1-4GlcNAcb1-2Mana1-	28	3
Gala1-3Galb1-3GlcNAcb1-3GalNAc-Sp14	28	16
Gala1-3Galb1-3(Fuca1-4)GlcNAcb1-2Mana1-6(Gala1-3Galb1-3(Fuca1-4)GlcNAcb1-2Mana1-3)Manb1-4GlcNAcb1-4GlcNAc-Sp19	28	17

GlcNAcb1-3Galb1-4GlcNAcb1-3Galb1-4GlcNAcb1-3Galb1-4GlcNAcb1-2Mana1-6(GlcNAcb1-3Galb1-4GlcNAcb1-3Galb1-4GlcNAcb1-3Galb1-4GlcNAcb1-2Mana1-	28	16
Galb1-4GlcNAcb1-3Galb1-4GlcNAcb1-6(Galb1-4GlcNAcb1-3Galb1-4GlcNAb1-2)Mana1-6(Galb1-4GlcNAcb1-3Galb1-4GlcNAcb1-2Mana1-3)Manb1-4GlcNAcb1-4(Fuca1-6)GlcNAcb-Sp24	28	10
Fuca-Sp8	27	17
Fuca1-2Galb1-3GlcNAcb1-2Mana1-6(Fuca1-2Galb1-3GlcNAcb1-2Mana1-3)Manb1-	27	24
Neu5Aca2-3Galb1-4GlcNAcb-Sp0	27	11
GlcNAcb1-3Galb1-4GlcNAcb1-3Galb1-4GlcNAcb1-3Galb1-4GlcNAcb1-3Galb1-4GlcNAcb1-6(GlcNAcb1-3Galb1-4GlcNAcb1-3Galb1-4GlcNAcb1-3Galb1-4GlcNAb1-2)Mana1-6(GlcNAcb1-3Galb1-4GlcNAcb1-3Galb1-	27	18
Gala1-3Galb1-4GlcNAcb1-6GalNAca-Sp14	27	14
Galb1-4GlcNAca1-6Galb1-4GlcNAcb-Sp0	26	26
Gala1-3Galb1-3GlcNAcb-Sp0	26	13
Fuca1-2Galb1-4(6S)Glc-Sp0	26	9
Gala1-3(Fuca1-2)Galb1-3GlcNAcb1-2Mana1-6(Gala1-3(Fuca1-2)Galb1-3GlcNAcb1-2Mana1-3)Manb1-4GlcNAcb1-4GlcNAcb-Sp20	26	31
Galb1-3GlcNAcb1-2Mana1-6(Galb1-3GlcNAcb1-2Mana1-3)Manb1-4GlcNAcb1-4(Fuca1-	26	15
Galb1-3GlcNAcb1-3Galb1-4GlcNAcb1-6(Galb1-3GlcNAcb1-3Galb1-4GlcNAb1-2)Mana1-6(Galb1-3GlcNAcb1-3Galb1-4GlcNAcb1-2Mana1-3)Manb1-4GlcNAcb1-4(Fuca1-6)GlcNAcb-Sp24	26	20
GlcNAb1-3Galb1-3GalNAc-Sp14	25	14
Galb1-4(Fuca1-3)GlcNAcb-Sp0	25	4
Galb1-4(Fuca1-3)GlcNAcb1-6(Fuca1-2Galb1-4GlcNAcb1-3)Galb1-4Glc-Sp21	25	17
Mana1-6Manb-Sp10	25	12

Neu5Aca2-3Galb1-3GlcNAcb1-3GalNAca-Sp14	24	15
GalNAca1-3(Fuca1-2)Galb1-4GlcNAcb1-2Mana1-6(GalNAca1-3(Fuca1-2)Galb1-4GlcNAcb1-2Mana1-3)Manb1-4GlcNAcb1-4GlcNAcb-Sp20	24	22
(3S)Galb1-3(Fuca1-4)GlcNAcb-Sp8	24	16
Gala1-3Galb1-4Glc-Sp10	24	18
Neu5Aca2-3Galb1-4Glc-Sp8	24	13
Fuca1-2Galb1-4(Fuca1-3)GlcNAcb1-2Mana1-6(Fuca1-2Galb1-4(Fuca1-3)GlcNAcb1-2Mana1-3)Manb1-4GlcNAcb1-4(Fuca1-6)GlcNAcb-Sp24	24	15
Galb1-4GlcNAcb1-6(Galb1-4GlcNAcb1-2)Mana1-6(GlcNAcb1-4)(Galb1-4GlcNAcb1-2Mana1-3)Manb1-4GlcNAcb1-4GlcNAc-Sp21	24	14
Neu5Aca2-3Galb1-4(Neu5Aca2-3Galb1-	24	36
Neu5Aca2-3Galb1-4GlcNAcb1-4Mana1-6(GlcNAcb1-4)(Neu5Aca2-3Galb1-4GlcNAcb1-4(Neu5Aca2-3Galb1-4GlcNAcb1-2)Mana1-	24	12
GlcNAcb1-3Galb1-4GlcNAcb1-3Galb1-4GlcNAcb1-6(GlcNAcb1-3Galb1-4GlcNAcb1-3Galb1-4GlcNAcb1-2)Mana1-6(GlcNAcb1-3Galb1-4GlcNAcb1-3Galb1-4GlcNAcb1-2Mana1-	23	26
Neu5Aca2-3Galb1-3GlcNAcb1-2Mana1-6(GlcNAcb1-4)(Neu5Aca2-3Galb1-3GlcNAcb1-2Mana1-3)Manb1-4GlcNAcb1-4GlcNAc-Sp21	23	19
GlcNAcb1-3Galb1-4GlcNAcb1-3Galb1-4GlcNAcb1-2Mana1-6(GlcNAcb1-3Galb1-4GlcNAcb1-3Galb1-4GlcNAcb1-2Mana1-	23	24
Neu5Aca2-3Galb1-3GlcNAcb-Sp8	23	10
Neu5Aca2-6Galb1-4GlcNAcb1-6(Galb1-3GlcNAcb1-3)Galb1-4Glc-Sp21	23	12
Mana1-6(Neu5Aca2-6Galb1-4GlcNAcb1-2Mana1-3)Manb1-4GlcNAcb1-4GlcNAc-Sp12	23	18
Neu5Aca2-3Galb1-3GlcNAcb1-2Mana1-6(Neu5Aca2-3Galb1-3GlcNAcb1-2Mana1-	23	16

Galb1-4GlcNAcb1-3Galb1-4GlcNAcb1-3Galb1-4GlcNAcb1-3Galb1-4GlcNAcb1-2Mana1-6(Galb1-4GlcNAcb1-3Galb1-4GlcNAcb1-3Galb1-4GlcNAcb1-3Galb1-4GlcNAcb1-2Mana1-4GlcNAcb1-3Galb1-4GlcNAcb1-2Mana1-4GlcNAcb1-3Galb1-4GlcNAcb1-3Galb1-4GlcNAcb1-2Mana1-6(GlcNAcb1-4)(Galb1-3GlcNAcb1-2Mana1-3)Manb1-4GlcNAcb1-4GlcNAcb1-6(GlcNAcb1-2)Mana1-6(GlcNAcb1-2Mana1-3)Manb1-4GlcNAcb1-4(Fuca1-2Galb1-3GlcNAcb1-2Mana1-6(Fuca1-2Galb1-3GlcNAcb1-2Mana1-3)Manb1-4GlcNAcb1-3Fuca-Sp21	23	21
GlcN(Gc)b-Sp8	23	25
Galb1-3GlcNAcb1-2Mana1-6(GlcNAcb1-4)(Galb1-3GlcNAcb1-2Mana1-3)Manb1-4GlcNAcb1-4GlcNAcb1-6(GlcNAcb1-2)Mana1-6(GlcNAcb1-2Mana1-3)Manb1-4GlcNAcb1-4(Fuca1-2Galb1-3GlcNAcb1-2Mana1-6(Fuca1-2Galb1-3GlcNAcb1-2Mana1-3)Manb1-4GlcNAcb1-3Fuca-Sp21	23	13
Rhaa-Sp8	22	16
(3S)Galb1-4(Fuca1-3)(6S)Glc-Sp0	22	24
GlcNAcb1-3Galb1-4GlcNAcb1-3Galb1-4GlcNAcb1-3Galb1-4GlcNAcb1-2Mana1-6(GlcNAcb1-3Galb1-4GlcNAcb1-3Galb1-4GlcNAcb1-3Galb1-4GlcNAcb1-2Mana1-4GlcNAcb1-3Galb1-4GlcNAcb1-2Mana1-6(GlcNAcb1-2)Mana1-6(GlcNAcb1-2Mana1-3)Manb1-4GlcNAcb1-4(Fuca1-2Galb1-3GlcNAcb1-2Mana1-6(Fuca1-2Galb1-3GlcNAcb1-2Mana1-3)Manb1-4GlcNAcb1-3Fuca-Sp21	22	13
GlcNAcb1-6(GlcNAcb1-2)Mana1-6(GlcNAcb1-2Mana1-3)Manb1-4GlcNAcb1-4(Fuca1-2Galb1-3GlcNAcb1-2Mana1-6(Fuca1-2Galb1-3GlcNAcb1-2Mana1-3)Manb1-4GlcNAcb1-3Fuca-Sp21	22	10
(3S)Galb1-4(Fuca1-3)(6S)GlcNAcb-Sp8	22	9
Galb1-4GlcNAcb1-2Mana1-6(Galb1-4GlcNAcb1-2Mana1-3)Manb1-4GlcNAcb1-4(Fuca1-2Galb1-3GlcNAcb1-2Mana1-6(Fuca1-2Galb1-3GlcNAcb1-2Mana1-3)Manb1-4GlcNAcb1-3Fuca-Sp21	22	20
Mana1-6(Mana1-3)Manb1-4GlcNAcb1-4GlcNAcb1-3Fuca-Sp21	22	9
Fuca1-2Galb1-3GlcNAcb1-2Mana1-6(Fuca1-2Galb1-3GlcNAcb1-2Mana1-3)Manb1-4GlcNAcb1-3Fuca-Sp21	22	7
KDNa2-6Galb1-4GlcNAc-Sp0	22	7
GlcNAcb1-3Fuca-Sp21	22	14
GlcNAcb1-3Galb1-4GlcNAcb1-3Galb1-4GlcNAcb1-3GalNAca-Sp14	22	19
Fuca1-2Galb1-3GlcNAcb1-3GalNAc-Sp14	22	13
(6P)Mana-Sp8	22	11
Galb1-4(Fuca1-3)(6S)GlcNAcb-Sp0	21	10
Fuca1-2Galb1-4(Fuca1-3)GlcNAcb1-2Mana1-6(Fuca1-2Galb1-4(Fuca1-3)GlcNAcb1-4(Fuca1-2Galb1-4(Fuca1-3)GlcNAcb1-2)Mana1-3)Manb1-4GlcNAcb1-3Galb1-4GlcNAcb1-6(GlcNAcb1-3Galb1-4GlcNAcb1-3)GalNAca-Sp14	21	13
GlcNAcb1-3Galb1-4GlcNAcb1-6(GlcNAcb1-3Galb1-4GlcNAcb1-3)GalNAca-Sp14	21	13
Galb1-4(Fuca1-3)GlcNAcb1-6(Galb1-3GlcNAcb1-3)Galb1-4Glc-Sp21	21	9

Galb1-4GlcNAcb1-3Galb1-4GlcNAcb1-2Mana1-6(Galb1-4GlcNAcb1-3Galb1-4GlcNAcb1-2Mana1-3)Manb1-4GlcNAcb1-4(Fuca1-6)GlcNAcb-Sp24	21	17
Gala1-3Galb1-4(Fuca1-3)GlcNAcb1-2Mana1-6(Gala1-3Galb1-4(Fuca1-3)GlcNAcb1-2Mana1-3)Manb1-4GlcNAcb1-4GlcNAcb-Sp20	21	12
Galb1-3GalNAca1-3(Fuca1-2)Galb1-4GlcNAcb-Sp24	21	17
GlcNAcb1-3Galb1-4GlcNAcb1-3Galb1-4GlcNAcb1-3Galb1-4GlcNAcb1-2Mana1-6(GlcNAcb1-3Galb1-4GlcNAcb1-3Galb1-4GlcNAcb1-3Galb1-4GlcNAcb1-2Mana1-6)GlcNAcb1-3Galb1-4GlcNAcb1-2Mana1-6(GlcNAcb1-3Galb1-4GlcNAcb1-2Mana1-6)GalNAcb1-4(Fuca1-3)GlcNAcb-Sp0	21	11
GlcNAcb1-3Galb1-4GlcNAcb1-2Mana1-6(GlcNAcb1-3Galb1-4GlcNAcb1-2Mana1-6)GalNAcb1-4(Fuca1-3)GlcNAcb-Sp0	21	14
Galb1-3GlcNAcb1-3Galb1-3GlcNAcb-Sp0	20	19
GlcNAca1-6Galb1-4GlcNAcb-Sp8	20	18
Galb1-3(Fuca1-4)GlcNAcb-Sp0	20	28
Galb1-3(Fuca1-4)GlcNAcb-Sp0	20	13
Neu5Aca2-6Galb1-4GlcNAcb1-3Galb1-4GlcNAcb-Sp0	20	11
Neu5Aca2-3Galb1-4(Fuca1-3)GlcNAcb1-2Mana1-6Galb1-3(Fuca1-4)GlcNAcb1-6GalNAca-Sp14	20	18
GlcNAca1-4Galb1-3GlcNAcb-Sp0	20	20
GlcNAca1-4Galb1-3GlcNAcb-Sp0	20	5
Galb1-4GlcNAcb1-6(Fuca1-2Galb1-3GlcNAcb1-3)Galb1-4Glc-Sp21	20	19
GalNAca-Sp8	20	10
Mana1-6(Galb1-4GlcNAcb1-2Mana1-3)Manb1-4GlcNAcb1-4GlcNAcb-Sp12	20	10
MurNAcb1-4GlcNAcb-Sp10	20	15
Gala1-2Galb-Sp8	20	19
Neu5Aca2-6GlcNAcb1-4GlcNAcb-Sp21	20	24
GlcNAca1-4Galb1-4GlcNAcb1-3Galb1-4Glc-Sp0	20	18
Galb1-4GlcNAcb1-3Galb1-4GlcNAcb1-3Galb1-4GlcNAcb1-2Mana1-6(Galb1-4GlcNAcb1-3Galb1-4GlcNAcb1-3Galb1-4GlcNAcb1-2Mana1-6)GlcNAcb1-3Galb1-4GlcNAcb1-2Mana1-6(Galb1-4GlcNAcb1-3Galb1-4GlcNAcb1-3Galb1-4GlcNAcb1-2Mana1-6)GalNAca-Sp14	19	6
Galb1-4(Fuca1-3)GlcNAcb1-3GalNAca-Sp14	19	10
Gala1-3(Fuca1-2)Galb1-4(Fuca1-3)GlcNAcb-Sp8	19	7
Galb1-3GalNAcb1-3Gal-Sp21	19	25
Neu5Aca2-3Galb1-4(Fuca1-3)(6S)GlcNAcb-Sp8	19	14

Galb1-3GalNAcb1-3Gala1-4Galb1-4GlcB-Sp0	19	19
Fuca1-2Galb1-3GalNAca1-3(Fuca1-2)Galb1-	19	9
(3S)GalNAcb1-4(3S)GlcNAc-Sp8	19	3
Neu5Aca2-6Galb1-4GlcNAcb1-2Mana1-		
6(Neu5Aca2-3Galb1-4GlcNAcb1-2Mana1-	19	20
6S(3S)Galb1-4GlcNAcb-Sp0	19	3
(3S)Galb1-4(Fuca1-3)GlcNAc-Sp8	19	17
Neu5,9Ac2a2-3Galb1-4GlcNAcb-Sp0	19	15
GlcNAcb1-3Galb1-4GlcB-Sp0	19	21
Galb1-4GlcNAcb1-6(Galb1-4GlcNAcb1-2)Mana1-		
6(GlcNAcb1-4)Galb1-4GlcNAcb1-4(Gal b1-		
4GlcNAcb1-2)Mana1-3)Manb1-4GlcNAcb1-	18	17
GlcNAcb1-2Mana1-6(GlcNAcb1-4)(GlcNAcb1-		
2Mana1-3)Manb1-4GlcNAcb1-4GlcNAc-Sp21	18	13
GlcNAcb1-6(GlcNAcb1-3)Galb1-4GlcNAcb-Sp8	18	10
Galb1-4GlcNAcb1-6(Neu5Aca2-6Galb1-		
3GlcNAcb1-3)Galb1-4Glc-Sp21	18	9
Gala1-3(Fuca1-2)Galb1-3GlcNAcb1-3GalNAc-	18	18
GlcNAcb1-4GlcNAcb1-4GlcNAcb1-4GlcNAcb1-		
4GlcNAcb1-4GlcNAcb1-Sp8	18	10
Fuca1-2(6S)Galb1-4GlcB-Sp0	18	29
Neu5Aca2-8Neu5Aca2-8Neu5Aca2-3Galb1-	18	14
Neu5Aca2-3Galb1-4GlcNAcb1-3Galb1-		
4GlcNAcb1-6(Galb1-3)GalNAca-Sp14	18	15
Fuca1-2Galb1-4GlcNAcb-Sp0	18	23
Neu5Aca2-3GalNAca-Sp8	18	15
Gala1-3(Fuca1-2)Galb1-4GlcNAcb1-3GalNAca-	18	18
(3S)Galb1-4(6S)GlcB-Sp0	17	7
Neu5Aca2-8Neu5Aca2-8Neu5Aca-Sp8	17	11
(6S)Galb1-3GlcNAcb-Sp0	17	7
Neu5Aca2-6(Neu5Aca2-3Galb1-3)GalNAca-Sp8	17	23
Neu5Aca2-3Galb1-4(Fuca1-3)GlcNAcb1-		
6(Neu5Aca2-3Galb1-3)GalNAc-Sp14	17	9
Galb1-3GlcNAca1-3Galb1-4GlcNAcb-Sp8	17	3
Neu5Aca2-6Galb1-4GlcNAcb1-3Galb1-3GlcNAcb-	17	16
Galb1-4(Fuca1-3)GlcNAcb1-3Galb1-3(Fuca1-	17	11
(3S)Galb1-4(Fuca1-3)GlcB-Sp0	17	13

Neu5Acb2-6GalNAca-Sp8	17	11
Neu5Aca2-3Galb1-3(Fuca1-4)GlcNAcb-Sp8	17	13
Fuca-Sp9	17	14
GlcNAcb1-3Galb1-4GlcNAcb1-3Galb1-4GlcNAcb1-2Mana1-6(GlcNAcb1-3Galb1-4GlcNAcb1-3Galb1-4GlcNAcb1-2Mana1-	17	5
Fuca1-2Galb1-4(6S)GlcNAcb-Sp8	17	10
Gala1-3Galb1-3GlcNAcb1-2Mana-Sp0	17	11
GlcNAcb1-6(Galb1-4GlcNAcb1-3)Galb1-4GlcNAc-	17	4
(6S)(4S)GalNAcb1-4GlcNAc-Sp8	17	9
Gala1-3(Fuca1-2)Galb1-4Glc-Sp0	17	22
Neu5Aca2-3Galb1-4GlcNAcb1-3Galb1-4(Fuca1-	17	15
Neu5Aca2-6Galb1-4GlcNAcb1-2Man-Sp0	17	12
GalNAca1-3(Fuca1-2)Galb1-3GalNAca1-3(Fuca1-2)Galb1-4GlcNAcb-Sp0	17	18
Galb1-3GlcNAcb1-3Galb1-4GlcNAcb1-6(Galb1-3GlcNAcb1-3)Galb1-4Glc-Sp0	16	13
Mana1-6(Mana1-3)Mana1-6(Mana1-3)Manb-	16	10
Neu5Aca2-6Galb1-4GlcNAcb1-3Galb1-4GlcNAcb1-2Mana1-6(Neu5Aca2-6Galb1-4GlcNAcb1-3Galb1-4GlcNAcb1-2Mana1-	16	9
Galb1-4GlcNAcb1-3Galb1-4GlcNAcb1-3Galb1-4GlcNAcb1-6(Galb1-4GlcNAcb1-3Galb1-4GlcNAcb1-3Galb1-4GlcNAcb1-3Galb1-4GlcNAcb1-2Mana1-3)Manb1-4GlcNAcb1-	16	8
GlcNAcb1-6(GlcNAcb1-3)GalNAca-Sp14	16	17
Neu5Aca2-3Galb1-4GlcNAcb-Sp8	16	7
Galb1-4GlcNAcb-Sp0	16	20
Gala1-3GalNAca-Sp8	16	21
Neu5Aca2-6Galb-Sp8	16	8
Fuca1-2(6S)Galb1-3GlcNAcb-Sp0	16	12
Neu5Aca2-3Galb1-4(Fuca1-3)GlcNAcb1-3Galb1-4(Fuca1-3)GlcNAcb1-3Galb1-4(Fuca1-3)GlcNAcb-	16	11
(3S)Galb1-4(6S)GlcNAcb-Sp8	16	10
Fuca1-2Galb1-3GalNAcb1-3Gala1-4Galb1-4Glc-	16	12

Galb1-4GlcNAcb1-3Galb1-4GlcNAcb1-3Galb1-4GlcNAcb1-3Galb1-4GlcNAcb1-6(Galb1-4GlcNAcb1-3Galb1-4GlcNAcb1-3Galb1-4GlcNAcb1-3Galb1-4GlcNAcb1-2)Mana1-6(Galb1-4GlcNAcb1-3Galb1-4GlcNAcb1-3Galb1-4GlcNAcb1-3Galb1-4GlcNAcb1-2)Mana1-	16	8
Neu5Aca2-6GalNAcb1-4(6S)GlcNAcb-Sp8	16	16
(4S)Galb1-4GlcNAcb-Sp8	16	25
Fuca1-2Galb1-4GlcNAcb1-3Galb1-4GlcNAcb1-3Galb1-4GlcNAcb-Sp0	16	21
Neu5Gca2-8Neu5Aca2-3Galb1-4GlcNAcb-Sp0	16	19
Galb1-4GlcNAcb1-3Galb1-4GlcNAcb1-3Galb1-4GlcNAcb1-3Galb1-4GlcNAcb1-3Galb1-4GlcNAcb1-6(Galb1-4GlcNAcb1-3Galb1-4GlcNAcb1-3Galb1-4GlcNAcb1-3Galb1-4GlcNAcb1-3Galb1-4GlcNAcb1-3Galb1-4GlcNAcb1-2)Mana1-6(Galb1-4GlcNAcb1-3Galb1-4GlcNAcb1-3Galb1-4GlcNAcb1-3Galb1-4GlcNAcb1-3Galb1-4GlcNAcb1-3Galb1-	16	6
Mana1-2Mana1-6(Mana1-2Mana1-3)Mana-Sp9	15	13
Neu5Aca2-6Galb1-4GlcNAcb1-3Galb1-4(Fuca1-3)GlcNAcb1-3Galb1-4(Fuca1-3)GlcNAcb-Sp0	15	14
(6S)Galb1-4(6S)Glc-Sp8	15	11
Neu5Aca2-3Galb1-3(6S)GlcNAcb-Sp8	15	14
GlcNAcb1-3Galb1-4GlcNAcb-Sp8	15	13
Neu5Aca2-8Neu5Aca2-3Galb1-3GalNAcb1-4(Neu5Aca2-3)Galb1-4Glc-Sp21	15	13
Fuca1-2Galb1-4GlcNAcb1-2Mana1-6(Fuca1-2Galb1-4GlcNAcb1-2Mana1-3)Manb1-	15	21
Neu5Gca2-3Galb1-4Glc-Sp0	15	21
Gala1-3Galb1-4GlcNAcb1-2Mana1-6(Gala1-3Galb1-4GlcNAcb1-2Mana1-3)Manb1-	15	11
Galb1-4GlcNAcb1-6GalNAcb-Sp14	15	14
GlcAb-Sp8	15	13
GlcNAcb1-2Mana1-6(GlcNAcb1-4)(GlcNAcb1-4(GlcNAcb1-2)Mana1-3)Manb1-4GlcNAcb1-	15	15
Fucb1-3GlcNAcb-Sp8	15	7
Galb1-3GlcNAcb-Sp0	15	8

Galb1-4GlcNAcb-Sp23	15	14
Fuca1-2(6S)Galb1-4(6S)GlcB-Sp0	15	11
GlcNAcb1-6(Galb1-3)GalNAca-Sp8	15	10
KDNa2-3Galb1-4GlcNAcb-Sp0	14	11
Galb1-4GlcNAcb-Sp8	14	7
Gala1-4Galb1-4GlcNAcb-Sp0	14	7
(3S)Galb1-3(Fuca1-4)GlcNAcb-Sp0	14	15
Fuca1-4GlcNAcb-Sp8	14	6
Neu5Aca2-6Galb1-4GlcNAcb1-6GalNAca-Sp14	14	7
GlcNAcb1-4Galb1-4GlcNAcb-Sp8	14	8
(6S)(4S)Galb1-4GlcNAcb-Sp0	14	11
Neu5Aca2-6GalNAca-Sp8	14	7
Neu5Aca2-6GlcNAcb1-4GlcNAcb1-4GlcNAc-	14	10
GlcNAcb1-6(GlcNAcb1-3)GalNAca-Sp8	14	6
Galb1-4GlcNAcb1-6(Galb1-4GlcNAcb1-2)Mana1-6(Galb1-4GlcNAcb1-4(Galb1-4GlcNAcb1-2)Mana1-3)Manb1-4GlcNAcb1-4GlcNAcb-Sp21	14	10
GlcNAcb1-2Galb1-3GalNAca-Sp8	14	12
GlcNAca1-3Galb1-4GlcNAcb-Sp8	14	7
GlcNAcb-Sp0	14	11
Gala1-3Galb1-3GlcNAcb1-2Mana1-6(Gala1-3Galb1-3GlcNAcb1-2Mana1-3)Manb1-	14	12
Galb1-3Galb-Sp8	14	9
GlcAb1-6Galb-Sp8	14	11
Galb1-3(Fuca1-4)GlcNAcb1-3Galb1-3(Fuca1-	14	15
Neu5Aca2-3Galb1-4GlcNAcb1-3Galb1-4GlcNAcb-	14	11
Manb1-4GlcNAcb-Sp0	14	9
Galb1-4GlcNAcb1-6GalNAca-Sp8	14	16
Neu5Acb2-6Galb1-4GlcNAcb-Sp8	14	8
(6S)Galb1-3(6S)GlcNAc-Sp0	14	6
GlcNAcb1-3Galb1-4GlcNAcb1-2Mana1-6(GlcNAcb1-3Galb1-4GlcNAcb1-2Mana1-	14	4
Galb1-4GlcNAcb1-2Mana-Sp0	14	5
GlcNAcb1-6(GlcNAcb1-4)(GlcNAcb1-3)GlcNAc-	14	9
GlcNAcb1-2Mana1-6(GlcNAcb1-2Mana1-3)Manb1-4GlcNAcb1-4GlcNAcb-Sp13	14	15

Neu5Aca2-6Galb1-4GlcNAcb1-4Mana1-6(GlcNAcb1-4)(Neu5Aca2-6Galb1-4GlcNAcb1-4(Neu5Aca2-6Galb1-4GlcNAcb1-2)Mana1-	14	15
Mana1-6(Mana1-2Mana1-3)Mana1-6(Mana1-2Mana1-3)Manb1-4GlcNAcb1-4GlcNAcb-Sp12	14	12
(3S)Galb1-4GlcNAcb-Sp8	13	7
Neu5Aca2-8Neu5Gca2-3Galb1-4GlcNAc-Sp0	13	3
GalNAca1-3(Fuca1-2)Galb1-4GlcNAcb1-3Galb1-4GlcNAcb1-3Galb1-4GlcNAcb-Sp0	13	10
Neu5Aca-Sp11	13	15
Neu5Aca2-3Galb1-3GlcNAcb-Sp0	13	17
Neu5Gca2-3Galb1-3(Fuca1-4)GlcNAcb-Sp0	13	10
GalNAca1-3GalNAcb1-3Gala1-4Galb1-4GlcNAcb-	13	6
Fuca1-2Galb1-3GalNAca1-3(Fuca1-2)Galb1-	13	18
Fuca1-2Galb1-4(Fuca1-3)GlcNAcb1-3Galb1-4(Fuca1-3)GlcNAcb-Sp0	13	10
Neu5Aca2-6Galb1-4GlcNAcb-Sp8	13	10
Gala1-3(Fuca1-2)Galb1-4GlcNAcb1-6GalNAca-	13	18
Gala1-4Galb1-4GlcNAcb1-2Mana1-6(Gala1-4Galb1-4GlcNAcb1-2Mana1-3)Manb1-	13	6
(6S)GlcNAcb-Sp8	13	12
Galb1-6Galb-Sp10	13	13
Neu5Aca2-3Galb1-3(Fuca1-4)GlcNAcb1-3Galb1-4(Fuca1-3)GlcNAcb-Sp0	13	11
Galb1-3GalNAcb1-4Galb1-4Glc-Sp8	13	8
Neu5Gca2-8Neu5Gca2-3Galb1-4GlcNAcb1-3Galb1-4GlcNAc-Sp0	13	3
Neu5Aca2-3Galb1-4GlcNAcb1-6(Neu5Aca2-3Galb1-4GlcNAcb1-2)Mana1-6(GlcNAcb1-4)(Neu5Aca2-3Galb1-4GlcNAcb1-4(Neu5Aca2-3Galb1-4GlcNAcb1-2)Mana1-3)Manb1-	13	6
Neu5Aca2-3Galb1-3GalNAcb1-3Gala1-4Galb1-	13	2
GalNAcb1-3Galb-Sp8	13	14
Gala1-4Galb1-4GlcNAcb-Sp8	13	7
Neu5Aca2-6Galb1-4Glc-Sp8	13	4

GlcNAcb1-3Galb1-4GlcNAcb1-3Galb1-4GlcNAcb1-3Galb1-4GlcNAcb1-6(GlcNAcb1-3Galb1-4GlcNAcb1-3Galb1-4GlcNAcb1-3Galb1-4GlcNAcb1-2)Mana1-6(GlcNAcb1-3Galb1-4GlcNAcb1-3Galb1-4GlcNAcb1-3Galb1-4GlcNAcb1-3Galb1-	13	6
GlcNAcb1-3Galb1-4GlcNAcb1-3Galb1-4GlcNAcb1-2Mana1-6(GlcNAcb1-3Galb1-4GlcNAcb1-3Galb1-4GlcNAcb1-2Mana1-	13	8
KDNa2-3Galb1-4Glc-Sp0	13	4
Glcb-Sp8	13	17
(3S)Galb1-4(6S)Glcb-Sp8	13	5
GlcNAcb1-6(GlcNAcb1-4)GalNAca-Sp8	13	5
Mana1-2Mana1-3Mana-Sp9	13	9
GlcAb1-3Galb-Sp8	13	10
Mana1-6(Mana1-3)Manb1-4GlcNAcb1-4GlcNAcb-Glca1-6Glca1-6Glca1-6Glcb-Sp10	13	8
Neu5Aca2-6Galb1-4GlcNAcb1-6(Neu5Aca2-6Galb1-4GlcNAcb1-2)Mana1-6(GlcNAcb1-4)(Neu5Aca2-6Galb1-4GlcNAcb1-2Mana1-	13	24
Neu5Aca2-6Galb1-4GlcNAcb1-6(Galb1-	13	7
Neu5Aca2-3Galb1-4GlcNAcb1-2Mana1-6(Neu5Aca2-3Galb1-4GlcNAcb1-2Mana1-3)Manb1-4GlcNAcb1-4(Fuca1-6)GlcNAcb-Sp24	13	6
Gala1-3(Fuca1-2)Galb1-3GalNAcb-Sp8	12	9
Neu5Aca2-3Galb1-4(6S)GlcNAcb-Sp8	12	8
(6P)Galb1-4GlcNAcb-SP0	12	10
Neu5Aca2-3(6S)Galb1-4GlcNAcb-Sp8	12	5
Fuca1-2Galb1-4GlcNAcb1-2Mana1-6(Fuca1-2Galb1-4GlcNAcb1-2Mana1-3)Manb1-	12	13
Fuca1-2Galb1-3(Fuca1-4)GlcNAcb-Sp8	12	9
KDNa2-3Galb1-4(Fuca1-3)GlcNAc-Sp0	12	7
Neu5Aca2-8Neu5Aca2-3Galb1-4Glcb-Sp0	12	14
Fuca1-2Galb1-4GlcNAcb1-3Galb1-4GlcNAcb-	12	18
Neu5Aca2-6Galb1-4GlcNAcb-Sp0	12	7
GalNAca1-3(Fuca1-2)Galb-Sp18	12	14
Galb1-3(6S)GlcNAcb-Sp8	12	14
Galb1-4GlcNAcb1-6(Galb1-3)GalNAca-Sp8	12	2

GalNAca1-3(Fuca1-2)Galb1-3GlcNAcb1-	12	14
Galb1-3Galb1-4GlcNAcb-Sp8	12	10
(4S)GalNAcb-Sp10	12	8
(6P)Glc-Sp10	12	10
Gala1-3(Fuca1-2)Galb1-4GlcNAcb1-2Mana-Sp0	12	6
GlcAb1-3GlcNAcb-Sp8	12	8
Galb1-4GlcNAcb1-6Galb1-4GlcNAcb-Sp0	12	3
GlcNAcb1-2Mana1-6(GlcNAcb1-2Mana1-3)Manb1-4GlcNAcb1-4GlcNAcb-Sp12	12	12
Neu5Aca2-6Galb1-4GlcNAcb1-2Mana1-6(Galb1-4GlcNAcb1-2Mana1-3)Manb1-4GlcNAcb1-	12	11
GlcNAcb1-2Mana1-6(GlcNAcb1-2Mana1-3)Manb1-4GlcNAcb1-4(Fuca1-6)GlcNAcb-Sp22	12	12
GlcNAcb1-3Man-Sp10	12	7
GalNAcb1-4Galb1-4Glc-Sp0	12	8
Fuca1-2Galb1-4GlcNAcb1-6(Fuca1-2Galb1-4GlcNAcb1-3)GalNAc-Sp14	12	20
Mana1-2Mana1-6(Mana1-2Mana1-3)Mana1-6(Mana1-2Mana1-2Mana1-3)Manb1-4GlcNAcb1-	12	5
Galb1-4Galb-Sp10	12	4
GalNAcb1-4(Neu5Aca2-3)Galb1-4GlcNAcb-Sp0	12	13
Fuca1-2Galb1-4GlcNAcb1-2Mana-Sp0	12	8
Neu5Aca2-6Galb1-4GlcNAcb1-2Mana1-6Manb1-4GlcNAcb1-4GlcNAc-Sp12	12	17
(3S)Galb1-3GalNAca-Sp8	12	13
GlcNAcb1-3Galb1-4GlcNAcb1-3Galb1-4GlcNAcb1-3Galb1-4GlcNAcb1-3Galb1-4GlcNAcb1-2Mana1-6(GlcNAcb1-3Galb1-4GlcNAcb1-3Galb1-4GlcNAcb1-3Galb1-	12	5
Neu5Aca2-3Galb1-3GlcNAcb1-2Mana-Sp0	12	7
Neu5Aca2-3Galb1-4(Fuca1-3)GlcNAcb1-	12	10
Neu5Aca2-3Galb1-4GlcNAcb1-2Mana1-6(Neu5Aca2-3Galb1-4GlcNAcb1-2Mana1-	11	11
Mana1-6(Mana1-3)Manb1-4GlcNAcb1-4(Fuca1-	11	3
GlcNAcb1-3Galb1-4GlcNAcb1-6(GlcNAcb1-3)Galb1-4GlcNAc-Sp0	11	7
Galb1-3GalNAca-Sp14	11	3

GlcNAcb1-3Galb1-4GlcNAcb1-3Galb1-4GlcNAcb- Galb1-3GlcNAcb1-6Galb1-4GlcNAcb-Sp0	11	10
Neu5Gca2-6GalNAca-Sp0	11	13
Neu5Gca2-6GalNAca-Sp0	11	20
Gala1-3(Fuca1-2)Galb1-3GalNAcb1-3Gala1- Neu5Gca2-8Neu5Gca2-3Galb1-4GlcNAc-Sp0	11	8
Neu5Gca2-8Neu5Gca2-3Galb1-4GlcNAc-Sp0	11	11
Neu5Aca2-3Galb1-4GlcNAcb1-6GalNAca-Sp14	11	12
Neu5Gca2-3Galb1-4(Fuca1-3)GlcNAcb-Sp0	11	7
Gala1-3(Fuca1-2)Galb-Sp8	11	5
Neu5Aca2-3Galb1-4GlcNAcb1-3Galb1- 4GlcNAcb1-6(Neu5Aca2-3Galb1-4GlcNAcb1- Galb1-4Glc-Sp8	11	12
Galb1-4Glc-Sp8	11	3
KDNa2-3Galb1-3GalNAca-Sp14	11	2
GlcNAcb1-2 Mana1-6(GlcNAcb1-4)(GlcNAcb1- 2Mana1-3)Manb1-4GlcNAcb1-4(Fuca1-6)GlcNAc- Fuca1-4(Galb1-3)GlcNAcb-Sp8	11	14
Fuca1-4(Galb1-3)GlcNAcb-Sp8	11	19
Gala1-4(Gala1-3)Galb1-4GlcNAcb-Sp8	11	16
Galb1-4GlcNAcb1-3Galb1-4GlcNAcb1-6(Galb1- 4GlcNAcb1-3Galb1-4GlcNAcb1-3)GalNAca-Sp14	11	8
GlcNAcb1-3Galb1-4GlcNAcb1-6(GlcNAcb1- 3Galb1-3)GalNAca-Sp14	11	8
Neu5Aca2-3Galb1-4GlcNAcb1-3Galb1- 4GlcNAcb1-3Galb1-4GlcNAcb-Sp0	11	11
Neu5Aca2-6Galb1-4GlcNAcb1-2Mana1- 6(Neu5Aca2-6Galb1-4GlcNAcb1-2Mana1- GlcNAcb1-2(GlcNAcb1-6)Mana1-6(GlcNAcb1- 2Mana1-3)Manb1-4GlcNAcb1-4GlcNAcb-Sp19	11	10
2Mana1-3)Manb1-4GlcNAcb1-4GlcNAcb-Sp19	11	5
Neu5Gca2-3Galb1-4GlcNAcb-Sp0	11	8
Galb1-4GlcNAcb1-2Mana1-6(GlcNAcb1-4)(Galb1- 4GlcNAcb1-4(Galb1-4GlcNAcb1-2)Mana1- 3)Manb1-4GlcNAcb1-4GlcNAc-Sp21	11	4
3)Manb1-4GlcNAcb1-4GlcNAc-Sp21	11	4
Neu5Aca2-3Galb1-3(6S)GalNAca-Sp8	11	15
Neu5Gca2-6Galb1-4GlcNAcb-Sp0	10	18
Fuca1-2Galb1-3GalNAcb1-4(Neu5Aca2-3)Galb1- Galb1-4GlcNAcb1-6(Fuca1-4(Fuca1-2Galb1- 3)GlcNAcb1-3)Galb1-4Glc-Sp21	10	4
Galb1-4GlcNAcb1-6(Fuca1-4(Fuca1-2Galb1- 3)GlcNAcb1-3)Galb1-4Glc-Sp21	10	5
(3S)Galb1-3GlcNAcb-Sp8	10	11
Gala1-3(Fuca1-2)Galb1-4(Fuca1-3)Glc-Sp21	10	6

Galb1-3GlcNAcb-Sp8	10	7
Neu5Aca2-3Galb1-3GlcNAcb1-6GalNAca-Sp14	10	9
GlcNAcb1-3Galb1-4GlcNAcb1-6(GlcNAcb1-3Galb1-4GlcNAcb1-2)Mana1-6(GlcNAcb1-3Galb1-4GlcNAcb1-2Man a1-3)Manb1-4GlcNAcb1-	10	15
Galb1-4GlcNAcb1-3Galb1-3GlcNAcb-Sp0	10	8
Galb1-4GlcNAcb1-3Galb1-4Glc-Sp8	10	5
Galb1-4GlcNAcb1-3Galb1-4GlcNAcb1-2Mana1-6(Galb1-4GlcNAcb1-3Galb1-4GlcNAcb1-2Mana1-3)Manb1-4GlcNAcb1-4GlcNAcb-Sp12	10	6
Glc-Sp8	10	6
Mana1-2Mana1-6(Mana1-3)Mana1-6(Mana1-2Mana1-2Mana1-3)Manb1-4GlcNAcb1-4GlcNAcb-	10	7
GlcNAcb1-6GalNAca-Sp8	10	2
Gala1-3Galb1-4Glc-Sp0	10	9
Galb1-4GlcNAcb1-2 Mana1-6(Galb1-4GlcNAcb1-4)(Galb1-4GlcNAcb1-2Mana1-3)Manb1-4GlcNAcb1-4(Fuca1-6)GlcNAc-Sp21	10	3
(3S)Galb1-4(Fuca1-3)GlcNAc-Sp0	10	8
(3S)Galb1-4Glc-Sp8	10	3
Fuca1-2Galb1-3(6S)GlcNAcb-Sp0	10	3
Neu5Aca2-6Galb1-4GlcNAcb1-6(Neu5Aca2-6Galb1-4GlcNAcb1-2)Mana1-6(GlcNAcb1-4)(Neu5Aca2-6Galb1-4GlcNAcb1-4(Neu5Aca2-6Galb1-4GlcNAcb1-2)Mana1-3)Manb1-	10	6
(3S)GalNAcb1-4GlcNAc-Sp8	10	10
Gala1-3(Fuca1-2)Galb1-3GlcNAcb-Sp0	10	13
GlcNAcb1-3Galb1-3GalNAca-Sp8	10	6
Galb1-3GlcNAcb1-6(Galb1-3)GalNAc-Sp14	10	5
Galb1-4Glc-Sp0	10	1
(6S)Galb1-4Glc-Sp0	10	10
GlcNAcb1-3GalNAca-Sp14	10	6
Neu5Aca2-3Galb1-3GlcNAcb1-3Galb1-3GlcNAcb-	10	6
Neu5Aca2-6Galb1-4GlcNAcb1-6(Fuca1-2Galb1-4(Fuca1-3)GlcNAcb1-3)Galb1-4Glc-Sp21	10	10
GalNAcb1-4GlcNAcb1-3GalNAcb1-4GlcNAcb-	10	8
GalNAca1-3GalNAcb-Sp8	10	7

GalNAca-Sp15	10	3
Neu5Aca2-6Galb1-4GlcNAcb1-2Mana1-6(Neu5Aca2-6Galb1-4GlcNAcb1-2Mana1-3)Manb1-4GlcNAcb1-4(Fuca1-6)GlcNAcb-Sp24	10	6
GlcNAcb1-6(Galb1-3)GalNAca-Sp14	10	3
Neu5Aca2-3Galb1-3GalNAca-Sp14	10	5
Gala1-3Galb1-4GlcNAcb-Sp8	9	9
GlcNAcb1-3Galb1-4GlcNAcb-Sp0	9	4
Neu5Aca2-6Galb1-4GlcNAcb1-3Galb1-4GlcNAcb1-3Galb1-4GlcNAcb1-2Mana1-6(Neu5Aca2-6Galb1-4GlcNAcb1-3Galb1-4GlcNAcb1-3Galb1-4GlcNAcb1-2Mana1-	9	6
Fuca1-2Galb1-3(Fuca1-4)GlcNAcb1-2Mana1-6(Fuca1-2Galb1-3(Fuca1-4)GlcNAcb1-2Mana1-3)Manb1-4GlcNAcb1-4(Fuca1-6)GlcNAcb1-	9	3
Galb1-4GlcNAcb1-2Mana1-3Manb1-4GlcNAcb1-	9	4
Mana1-6(Mana1-3)Mana1-6(Mana1-2Mana1-3)Manb1-4GlcNAcb1-4GlcNAcb-Sp12	9	13
Gala1-3(Fuca1-2)Galb1-4(Fuca1-3)GlcNAcb1-	9	3
GlcAa-Sp8	9	5
Glca1-6Glca1-6Glc-Sp8	9	10
Neu5Aca2-6(Galb1-3)GlcNAcb1-4Galb1-4Glc-Sp8	9	6
Mana1-2Mana1-6(Mana1-3)Mana1-6(Mana1-2Mana1-2Mana1-3)Mana-Sp9	9	12
GalNAca1-3(Fuca1-2)Galb1-3GlcNAcb-Sp0	9	7
Neu5Aca2-6Galb1-4GlcNAcb1-3Galb1-4GlcNAcb1-6(Neu5Aca2-6Galb1-4GlcNAcb1-	9	6
Neu5Aca2-3Galb1-3GalNAcb1-4Galb1-4Glc-Sp8	9	5
Glca1-4Glca1-4Glca1-4Glc-Sp10	9	2
Neu5Aca2-3Galb1-4GlcNAcb1-6(Neu5Aca2-3Galb1-4GlcNAcb1-2)Mana1-6(GlcNAcb1-4)(Neu5Aca2-3Galb1-4GlcNAcb1-2Mana1-	9	5
Neu5Acb2-6(Galb1-3)GalNAca-Sp8	9	7

Neu5Aca2-6Galb1-4GlcNAcb1-6(Fuca1-2Galb1-3GlcNAcb1-3)Galb1-4Glc-Sp21	8	7
Galb1-4GalNAcb1-3(Fuca1-2)Galb1-4GlcNAcb-6S(3S)Galb1-4(6S)GlcNAcb-Sp0	8	5
(3S)Galb1-3GlcNAcb-Sp0	8	7
Mana1-2Mana1-2Mana1-6(Mana1-3)Mana-Sp9	8	11
GlcNAcb1-6Galb1-4GlcNAcb-Sp8	8	7
GalNAcb1-4GlcNAcb-Sp8	8	10
Galb1-3GlcNAcb1-2Mana1-6(Galb1-3GlcNAcb1-2Mana1-3)Manb1-4GlcNAcb1-4GlcNAcb-Sp19	8	5
Galb1-4GlcNAcb1-2Mana1-6(GlcNAcb1-4)(Galb1-4GlcNAcb1-2Mana1-3)Manb1-4GlcNAcb1-	8	3
GalNAca1-3(Fuca1-2)Galb1-4GlcNAcb1-2Mana1-6(GalNAca1-3(Fuca1-2)Galb1-4GlcNAcb1-2Mana1-3)Manb1-4GlcNAcb1-4(Fuca1-	8	3
Gala1-4GlcNAcb-Sp8	8	3
GalNAcb1-3(Fuca1-2)Galb-Sp8	8	5
GalNAca1-3(Fuca1-2)Galb1-4Glc-Sp0	8	6
Galb1-4GlcNAcb1-3Galb1-4GlcNAcb1-6(Galb1-	8	3
Fuca1-2Galb1-3GlcNAcb1-6(Fuca1-2Galb1-3GlcNAcb1-3)GalNAca-Sp14	8	4
Gala1-3GalNAca-Sp16	8	3
GalNAca1-3(Fuca1-2)Galb1-4GlcNAcb1-	8	11
Gala1-4(Fuca1-2)Galb1-4GlcNAcb-Sp8	8	9
GlcNAcb1-6(Neu5Aca2-3Galb1-3)GalNAca-Sp14	8	7
Fuca1-3GlcNAcb1-6(Galb1-4GlcNAcb1-3)Galb1-	8	8
GalNAcb1-4GlcNAcb1-2Mana-Sp0	8	8
Mana-Sp8	8	8
GalNAca1-3(Fuca1-2)Galb1-4 GlcNAcb1-2Mana-	8	4
Galb1-4GlcNAcb1-3Galb1-4GlcNAcb1-3Galb1-4GlcNAcb1-2Mana1-6(Galb1-4GlcNAcb1-3Galb1-4GlcNAcb1-3Galb1-4GlcNAcb1-2Mana1-	8	1
Neu5Aca2-8Neu5Acb-Sp17	8	8
Fuca1-4(Galb1-3)GlcNAcb1-2Mana1-6(Fuca1-4(Galb1-3)GlcNAcb1-2Mana1-3)Manb1-4GlcNAcb1-4(Fuca1-6)GlcNAcb-Sp22	7	7
Galb1-4GlcNAcb1-3Galb1-4GlcNAcb-Sp0	7	6

Fuca1-2Galb1-3GlcNAcb1-3Galb1-4Glc- Sp8	7	1
Galb1-4GlcNAcb1-3Galb1-4GlcNAcb1-3Galb1- 4GlcNAcb1-3Galb1-4GlcNAcb1-2Mana1-6(Galb1- 4GlcNAcb1-3Galb1-4GlcNAcb1-3Galb1- 4GlcNAcb1-3Galb1-4GlcNAcb1-2Mana1-	7	4
Fuca1-2Galb1-4Glc- Sp0	7	4
GalNAca1-3(Fuca1-2)Galb1-4(Fuca1-3)GlcNAcb1- 3GalNAc-Sp14	7	2
Neu5Aca2-6Galb1-4(6S)GlcNAcb-Sp8	7	4
Neu5Aca2-8Neu5Aca2-3Galb1-4GlcNAc-Sp0	7	5
Neu5Aca2-3Galb1-4GlcNAcb1-2Mana1- 6(GlcNAcb1-4)(Neu5Aca2-3Galb1-4GlcNAcb1- 2Mana1-3)Manb1-4GlcNAcb1-4GlcNAcb-Sp21	7	7
GlcNAcb1-4GlcNAcb1-4GlcNAcb1-4GlcNAcb1-	7	5
Neu5Aca2-3Galb1-4(Fuca1-3)GlcNAcb1-3Galb1-	7	5
Gala1-3Galb1-3GlcNAcb1-6GalNAca-Sp14	7	6
Neu5Aca2-6Galb1-4GlcNAcb1-2Mana1- 6(Neu5Aca2-6Galb1-4GlcNAcb1-2Mana1-	7	17
Neu5Aca2-6Galb1-4GlcNAcb1-2Mana1-6(Mana1- 3)Manb1-4GlcNAcb1-4GlcNAc-Sp12	7	10
Fuca1-2Galb1-3GlcNAcb-Sp8	7	18
Gala1-3(Fuca1-2)Galb1-4(Fuca1-3)GlcNAcb-Sp0	7	7
Galb1-4GlcNAcb1-3Galb1-4GlcNAcb1-3Galb1- 4GlcNAcb1-2Mana1-6(Galb1-4GlcNAcb1-3Galb1- 4GlcNAcb1-3Galb1-4GlcNAcb1-2Mana1- 3)Manb1-4GlcNAcb1-4(Fuca1-6)GlcNAcb-Sp24	7	5
Galb1-3GlcNAcb1-3Galb1-4Glc- Sp10	7	7
Fuca1-4(Fuca1-2Galb1-3)GlcNAcb1-2Mana1- 3(Fuca1-4(Fuca1-2Galb1-3)GlcNAcb1-2Mana1- 3)Manb1-4GlcNAcb1-4GlcNAcb-Sp19	7	9
Fuca1-2Galb1-4(Fuca1-3)GlcNAcb-Sp0	7	5
Galb1-3GlcNAcb1-6GalNAca-Sp14	7	2
Galb1-2Galb-Sp8	7	6
Galb1-3GlcNAcb1-6(Galb1-3GlcNAcb1-2)Mana1- 6(Galb1-3GlcNAcb1-2Mana1-3)Manb1-	7	5
Gala1-3GalNAcb-Sp8	7	5
GalNAcb1-4GlcNAcb-Sp0	7	13

Neu5Aca2-8Neu5Aca-Sp8	7	6
Galb1-4GlcNAcb1-2Mana1-6(GlcNAcb1-2Mana1-3)Manb1-4GlcNAcb1-4GlcNAc-Sp12	7	4
Gala1-3(Fuca1-2)Galb1-4GlcNAc-Sp0	7	6
Galb1-4(Fuca1-3)GlcNAcb1-3Galb1-4(Fuca1-	7	4
Gala1-3(Fuca1-2)Galb1-3GlcNAcb-Sp8	7	3
Gala1-4Galb1-4GlcNAcb1-3Galb1-4Glc-Sp0	7	8
GalNAcb1-4(Neu5Aca2-8Neu5Aca2-3)Galb1-	7	17
Neu5Aca2-6Galb1-4GlcNAcb1-2Mana1-3Manb1-4GlcNAcb1-4GlcNAc-Sp12	7	9
Neu5Aca2-3Galb1-3GalNAcb1-4(Neu5Aca2-	7	8
GlcNAcb1-3Galb1-4GlcNAcb1-3GalNAca-Sp14	7	10
Neu5Aca2-3Galb1-3GlcNAcb1-6(Neu5Aca2-3Galb1-3GlcNAcb1-2)Mana1-6(Neu5Aca2-3Galb1-3GlcNAcb1-2Mana1-3)Manb1-	7	11
Galb1-4GlcNAcb1-3GalNAca-Sp8	7	7
Galb1-3GlcNAcb1-3Galb1-4GlcNAcb1-3Galb1-4GlcNAcb1-6(Galb1-3GlcNAcb1-3Galb1-4GlcNAcb1-3Galb1-4GlcNAcb1-2)Mana1-6(Galb1-3GlcNAcb1-3Galb1-4GlcNAcb1-3Galb1-4GlcNAcb1-2Mana1-3)Manb1-4GlcNAcb1-	7	3
(6S)Galb1-4Glc-Sp8	7	12
Fuca1-2(6S)Galb1-4GlcNAcb-Sp0	7	3
Neu5Aca2-3Galb1-4GlcNAcb1-6(Neu5Aca2-3Galb1-3)GalNAca-Sp14	7	3
GalNAcb1-3Gala1-4Galb1-4GlcNAcb1-3Galb1-	6	5
GlcNAcb1-6(GlcNAcb1-2)Mana1-6(GlcNAcb1-4)(GlcNAcb1-4(GlcNAcb1-2)Mana1-3)Manb1-4GlcNAcb1-4(Fuca1-6)GlcNAc-Sp21	6	7
Neu5Aca2-6Galb1-4GlcNAcb1-3Galb1-4GlcNAcb1-6(Galb1-3)GalNAca-Sp14	6	9
Neu5Aca2-3Galb1-4GlcNAcb1-3Galb1-4GlcNAcb1-2Mana1-6(Neu5Aca2-3Galb1-4GlcNAcb1-3Galb1-4GlcNAcb1-2Mana1-	6	5
Fuca1-2Galb1-4(Fuca1-3)GlcNAcb1-3Galb1-4(Fuca1-3)GlcNAcb1-3Galb1-4(Fuca1-3)GlcNAcb1-	6	5
GalNAcb1-4(Neu5Aca2-3)Galb1-4GlcNAcb-Sp8	6	3

Neu5Aca2-6Galb1-4GlcNAcb1-2Mana1-6(GlcNAcb1-4)(Neu5Aca2-6Galb1-4GlcNAcb1-2Mana1-3)Manb1-4GlcNAcb1-4GlcNAcb-Sp21	6	3
Neu5Aca2-3GalNAcb1-4GlcNAcb-Sp0	6	4
GalNAca1-3(Fuca1-2)Galb1-3GalNAcb1-3Gala1-4Galb1-4Glc-Sp21	6	6
Fuca1-2Galb1-4GlcNAcb1-2Mana1-6(Fuca1-2Galb1-4GlcNAcb1-2(Fuca1-2Galb1-4GlcNAcb1-4)Mana1-3)Manb1-4GlcNAcb1-4GlcNAcb-Sp12	6	5
GalNAca1-3(Fuca1-2)Galb1-4GlcNAcb1-6GalNAcb1-4GlcNAcb1-6(Galb1-4GlcNAcb1-3)Galb1-	6	6
(6S)Galb1-4(6S)GlcNAcb-Sp0	6	5
Gala1-4Galb1-4Glc-Sp0	6	7
Gala1-4Galb1-4Glc-Sp0	6	5
GalNAca1-3(Fuca1-2)Galb1-4GlcNAcb1-3Galb1-	6	4
Neu5Aca2-6(Galb1-3)GalNAca-Sp14	6	13
Gala1-3Galb1-4(Fuca1-3)GlcNAcb-Sp8	6	1
Neu5Aca2-3Galb1-3GalNAca-Sp8	6	12
Neu5Aca2-3Galb-Sp8	6	3
Galb1-3GlcNAcb1-3GalNAca-Sp14	6	4
Fuca1-2Galb1-3GalNAca-Sp8	6	7
Neu5,9Ac ₂ a-Sp8	6	15
GalNAcb1-3GalNAca-Sp8	6	5
GlcNAcb1-6(GlcNAcb1-2)Mana1-6(GlcNAcb1-4)(GlcNAcb1-2Mana1-3)Manb1-4GlcNAcb1-	6	9
GalNAca1-4(Fuca1-2)Galb1-4GlcNAcb-Sp8	6	3
Neu5Aca2-3Galb1-4GlcNAcb1-3Galb1-3GlcNAcb-	6	6
Neu5Gcb2-6Galb1-4GlcNAcb-Sp8	6	5
Neu5Aca2-3Galb1-4GlcNAcb1-2Mana1-6(Neu5Aca2-6Galb1-4GlcNAcb1-2Mana1-	6	3
Mana1-2Mana1-6(Mana1-2Mana1-3)Mana1-6(Mana1-2Mana1-2Mana1-3)Mana-Sp9	6	11
Galb1-4(Fuca1-3)GlcNAcb-Sp8	6	4
Galb1-3GlcNAcb1-3Galb1-4(Fuca1-3)GlcNAcb1-6(Galb1-3GlcNAcb1-3)Galb1-4Glc-Sp21	6	2
Neu5Aca2-3Galb1-4GlcNAcb1-3Galb1-4GlcNAcb1-3GalNAca-Sp14	6	9
Manb-Sp8	6	3

Galb1-4GlcNAcb1-2Mana1-6(Mana1-3)Manb1-4GlcNAcb1-4GlcNAcb-Sp12	6	2
Neu5Aca2-8Neu5Aca2-3Galb1-3GalNAcb1-4(Neu5Aca2-8Neu5Aca2-3)Galb1-4Glc-Sp0	6	3
Neu5,9Ac2a2-6Galb1-4GlcNAcb-Sp8	6	8
Fuca1-2Galb1-4GlcNAcb1-3GalNAca-Sp14	6	7
(6S)Galb1-4GlcNAcb-Sp8	5	4
Fuca1-4(Galb1-3)GlcNAcb1-2 Mana-Sp0	5	5
Glca-Sp8	5	7
Gala1-3Galb1-4GlcNAcb1-2Mana1-6(Gala1-3Galb1-4GlcNAcb1-2Mana1-3)Manb1-	5	4
Fuca1-2Galb1-4(Fuca1-3)GlcNAcb1-2Mana1-6(Fuca1-2Galb1-4(Fuca1-3)GlcNAcb1-2Mana1-3)Manb1-4GlcNAcb1-4GlcNAcb-Sp20	5	5
Fuca1-2Galb1-3GlcNAcb-Sp0	5	9
GlcNAcb1-4GlcNAcb1-4GlcNAcb-Sp8	5	4
Galb1-4(6S)Glc-Sp8	5	1
Galb1-4(Fuca1-3)GlcNAcb1-6(Neu5Aca2-6(Neu5Aca2-3Galb1-3)GlcNAcb1-3)Galb1-4Glc-	5	3
Fuca1-2Galb1-3GalNAcb1-4(Neu5Aca2-3)Galb1-	5	10
Neu5Gca2-3Galb1-4GlcNAcb1-3Galb1-4GlcNAcb1-2Mana1-6(Neu5Gca2-3Galb1-4GlcNAcb1-3Galb1-4GlcNAcb1-2Mana1-	5	7
Galb1-3GlcNAcb1-3Galb1-4GlcNAcb-Sp0	5	4
GlcNAcb1-3Galb1-4GlcNAcb1-6(Galb1-	5	6
Neu5Aca2-3Galb1-4(Fuca1-3)GlcNAcb1-6(Galb1-3)GalNAca-Sp14	5	3
Galb1-4GlcNAcb1-6(Galb1-4GlcNAcb1-3)GalNAc-	5	6
Neu5Aca2-6Galb1-4 GlcNAcb1-6(Neu5Aca2-6Galb1-4GlcNAcb1-3)GalNAca-Sp14	5	11
Galb1-4GalNAca1-3(Fuca1-2)Galb1-4GlcNAcb-	5	4
Galb1-3GlcNAcb1-3Galb1-4(Fuca1-3)GlcNAcb-	5	3
Neu5Aca2-6Galb1-4GlcNAcb1-3Galb1-4GlcNAcb1-3Galb1-4GlcNAcb-Sp0	5	9
Galb1-4GlcNAcb1-2Mana1-6(Galb1-4GlcNAcb1-2Mana1-3)Manb1-4GlcNAcb1-4GlcNAcb-Sp12	5	2

Galb1-4GlcNAcb1-3Galb1-4(Fuca1-3)GlcNAcb1-3Galb1-4(Fuca1-3)GlcNAcb-Sp0	5	6
Galb1-4GlcNAcb1-2 Mana1-6(GlcNAcb1-4)(Galb1-4GlcNAcb1-2Mana1-3)Manb1-	5	4
Neu5Aca2-3Galb1-3GlcNAcb1-3Galb1-4GlcNAcb-	5	2
Neu5Aca2-3(6S)Galb1-4(Fuca1-3)GlcNAcb-Sp8	5	2
Galb1-4(Fuca1-3)GlcNAcb1-2Mana-Sp0	5	6
Galb1-4GlcNAcb1-6(Galb1-4GlcNAcb1-2)Mana1-6(Galb1-4GlcNAcb1-2Mana1-3)Manb1-	5	3
Galb1-4GlcNAcb1-2Mana1-6(Galb1-4GlcNAcb1-4)(Galb1-4GlcNAcb1-2)Mana1-3)Manb1-	5	6
Gala1-3(Fuca1-2)Galb1-3GalNAca-Sp8	5	6
GlcNAcb1-6(GlcNAcb1-2)Mana1-6(GlcNAcb1-4)(GlcNAcb1-4(GlcNAcb1-2)Mana1-3)Manb1-	5	1
Neu5Aca2-3Galb1-4Glc-Sp0	5	3
Fuca1-2Galb1-3GalNAca-Sp14	5	9
Fuca1-2Galb1-3GalNAcb1-3Gala-Sp9	5	8
GalNAcb1-4(Neu5Aca2-8Neu5Aca2-8Neu5Aca2-8Neu5Aca2-3)Galb1-4Glc-Sp0	5	3
Neu5Aca2-6Galb1-4GlcNAcb1-2Mana1-6(Neu5Aca2-6Galb1-4GlcNAcb1-2Man-a1-	5	5
GalNAca1-3(Fuca1-2)Galb1-4GlcNAcb1-6(GalNAca1-3(Fuca1-2)Galb1-4GlcNAcb1-	4	3
Neu5Aca2-6Galb1-4GlcNAcb1-3Galb1-4GlcNAcb1-3GalNAca-Sp14	4	6
GalNAcb1-4(6S)GlcNAc-Sp8	4	3
Galb1-4(Fuca1-3)GlcNAcb1-6(Fuca1-4(Fuca1-2Galb1-3)GlcNAcb1-3)Galb1-4Glc-Sp21	4	11
Gala1-6Glc-Sp8	4	4
Mana1-6(Mana1-3)Mana1-6(Mana1-3)Manb1-4GlcNAcb1-4GlcNAcb-Sp12	4	3
Neu5Aca2-3Galb1-4GlcNAcb1-3GalNAc-Sp14	4	9
Galb1-4GlcNAcb1-2Mana1-6(Neu5Aca2-6Galb1-4GlcNAcb1-2Mana1-3)Manb1-4GlcNAcb1-	4	9
Glca1-4Glca-Sp8	4	5
Galb1-3GalNAcb1-4(Neu5Aca2-8Neu5Aca2-	4	7
Fuca1-2Galb-Sp8	4	4

Galb1-3GalNAca-Sp16	4	3
GlcNAcb1-2Mana1-6(Galb1-4GlcNAcb1-2Mana1-3)Manb1-4GlcNAcb1-4GlcNAc-Sp12	4	14
Neu5,9Ac2a2-3Galb1-3GlcNAcb-Sp0	4	1
Gala1-3(Fuca1-2)Galb1-3GlcNAcb1-6GalNAc-	4	2
Neu5Aca2-6Galb1-4GlcNAcb1-3GalNAc-Sp14	4	5
Fuca1-2Galb1-4(Fuca1-3)GlcNAcb1-3GalNAca-	4	6
(3S)Galb1-4GlcNAcb-Sp0	4	2
Neu5Aca2-6GalNAcb1-4GlcNAcb-Sp0	4	2
GalNAcb1-3GlcNAcb-Sp0	4	3
(6S)GalNAcb1-4GlcNAc-Sp8	4	6
GalNAcb1-4GlcNAcb1-2Mana1-6(GalNAcb1-4GlcNAcb1-2Mana1-3)Manb1-4GlcNAcb1-	4	2
GalNAcb1-6GalNAcb-Sp8	4	3
Fuca1-2Galb1-4(Fuca1-3)GlcNAcb-Sp8	4	4
Gala1-3(Fuca1-2)Galb-Sp18	4	3
GalNAcb1-3Gala1-6Galb1-4Glc-Sp8	4	7
GalNAca1-3(Fuca1-2)Galb1-3GlcNAcb1-2Mana1-6(GalNAca1-3(Fuca1-2)Galb1-3GlcNAcb1-2Mana1-3)Manb1-4GlcNAcb1-4(Fuca1-	4	6
Galb1-3GalNAca-Sp8	3	4
GalNAcb1-4(Fuca1-3)(6S)GlcNAcb-Sp8	3	3
Gala1-3Galb1-4GlcNAcb1-2Mana-Sp0	3	3
(3S)Galb-Sp8	3	2
Gala1-3Galb1-4GlcNAcb1-3GalNAca-Sp14	3	1
Gala1-3(Fuca1-2)Galb1-4GlcNAcb1-2Mana1-6(Gala1-3(Fuca1-2)Galb1-4GlcNAcb1-2Mana1-3)Manb1-4GlcNAcb1-4GlcNAcb-Sp20	3	2
Galb1-4GlcNAcb1-3Galb1-4GlcNAcb1-3Galb1-	3	4
Fuca1-2Galb1-3GlcNAcb1-3Galb1-4Glc-Sp10	3	4
GalNAcb1-4(Neu5Aca2-3)Galb1-4Glc-Sp0	3	3
GlcNAcb1-6GalNAca-Sp14	3	3
Galb1-3GalNAca1-3(Fuca1-2)Galb1-4Glc-Sp0	3	1
(6S)GlcNAcb1-3Galb1-4GlcNAcb-Sp0	3	4
GlcNAcb1-4GlcNAcb-Sp12	3	3
Neu5Aca2-3Galb1-4(Fuca1-3)GlcNAcb-Sp8	3	6
Neu5Aca2-6(Neu5Aca2-3Galb1-3)GalNAca-Sp14	3	4

GalNAcb1-4(Neu5Aca2-3)Galb1-4GlcNAcb1-	3	3
GalNAca1-3(Fuca1-2)Galb-Sp8	3	8
GlcNAcb-Sp8	3	5
Galb1-4(Fuca1-3)GlcNAcb1-2Mana1-6(Galb1-4(Fuca1-3)GlcNAcb1-2Mana1-3)Manb1-	3	5
Fuca1-2Galb1-4GlcNAcb-Sp8	3	6
Galb1-3GalNAcb1-4(Neu5Aca2-3)Galb1-4Glc-	3	2
GalNAca1-3(Fuca1-2)Galb1-4GlcNAcb-Sp0	3	5
GalNAcb-Sp8	2	5
GalNAca1-3(Fuca1-2)Galb1-4GlcNAcb-Sp8	2	1
Glc1-4Glc-Sp8	2	3
Fuca1-3GlcNAcb-Sp8	2	4
Galb1-4GlcNAcb1-6(Galb1-4GlcNAcb1-2)Mana1-6(Galb1-4GlcNAcb1-2Mana1-3)Manb1-4GlcNAcb1-4(Fuca1-6)GlcNAcb-Sp24	2	2
Galb1-3GlcNAca1-6Galb1-4GlcNAcb-Sp0	2	4
Galb-Sp8	2	6
GalNAca1-3GalNAcb1-3Gala1-4Galb1-4Glc-Sp0	2	2
Neu5Aca2-6(Galb1-3)GalNAca-Sp8	2	5
Neu5Aca2-3Galb1-4(Fuca1-3)GlcNAcb1-3Galb-	2	3
GalNAca1-3Galb-Sp8	2	7
Galb1-3GlcNAcb1-3Galb1-4GlcNAcb1-2Mana1-6(Galb1-3GlcNAcb1-3Galb1-4GlcNAcb1-2Mana1-3)Manb1-4GlcNAcb1-4GlcNAc-Sp25	2	4
GalNAca1-3(Fuca1-2)Galb1-3GlcNAcb1-2Mana1-6(GalNAca1-3(Fuca1-2)Galb1-3GlcNAcb1-2Mana1-3)Manb1-4GlcNAcb1-4GlcNAcb-Sp20	2	7
Galb1-4GlcNAcb1-3Galb1-4Glc-Sp0	1	3
4S(3S)Galb1-4GlcNAcb-Sp0	1	4
GalNAca1-3(Fuca1-2)Galb1-4(Fuca1-3)GlcNAcb-	1	4
GalNAcb1-4(Neu5Aca2-8Neu5Aca2-8Neu5Aca2-3)Galb1-4Glc-Sp0	1	4
Mana1-2Mana1-2Mana1-3Mana-Sp9	1	6
Neu5Aca2-3Galb1-4(Fuca1-3)GlcNAcb-Sp0	1	3
Mana1-6(Mana1-3)Mana-Sp9	1	5
Neu5Aca-Sp8	0	5

Neu5Aca2-6Galb1-4GlcNAcb1-2Mana1-6(GlcNAcb1-2Mana1-3)Manb1-4GlcNAcb1-	0	4
Gala1-3Galb-Sp8	0	3