

1 **Association of polymorphisms at the microRNA binding site of the caprine *KITLG***

2 **3'-UTR with litter size**

3

4 **Xiaopeng An<sup>1a</sup>, Yuxuan Song<sup>1a</sup>, Shuhai Bu<sup>1b</sup>, Haidong Ma<sup>a</sup>, Kexin Gao<sup>a</sup>, Jinxing Hou<sup>a</sup>,**

5 **Shan Wang<sup>a</sup>, Zhang Lei<sup>a</sup>, Binyun Cao<sup>a\*</sup>**

6

7

8

9

10

11

12

13

14

15

16

17

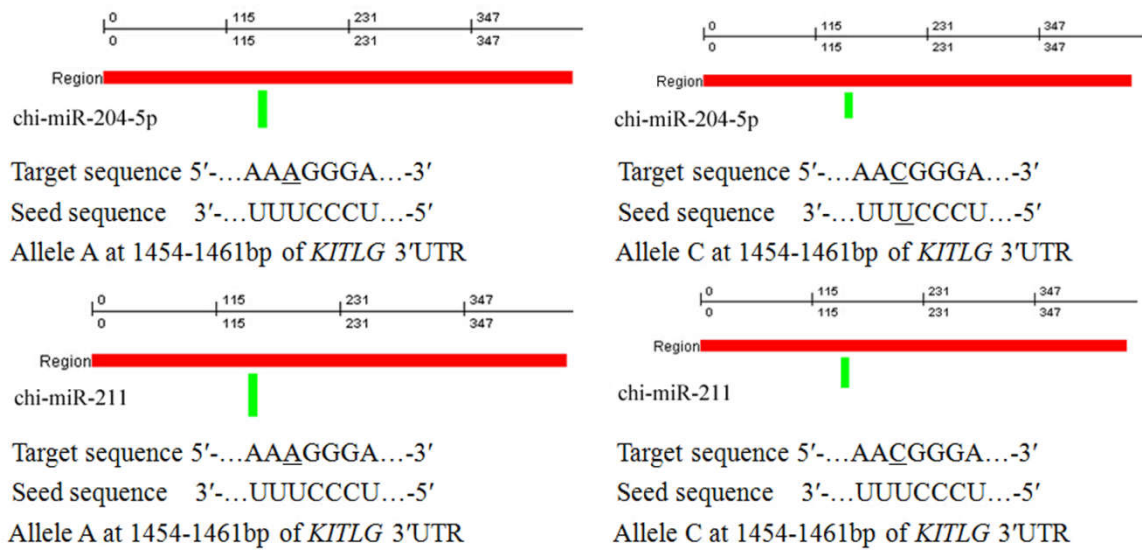
18

19

20

21

22



23

24 **Figure S1** Effects of SNP c.1457A>C on miRNA binding sites in the caprine *KITLG* 3'UTR.

25 The green boxes represent potential miRNA target sites. The underline indicates the position

26 of base mutation

27

28

29

30

31

32

33

34

35

36

37

38

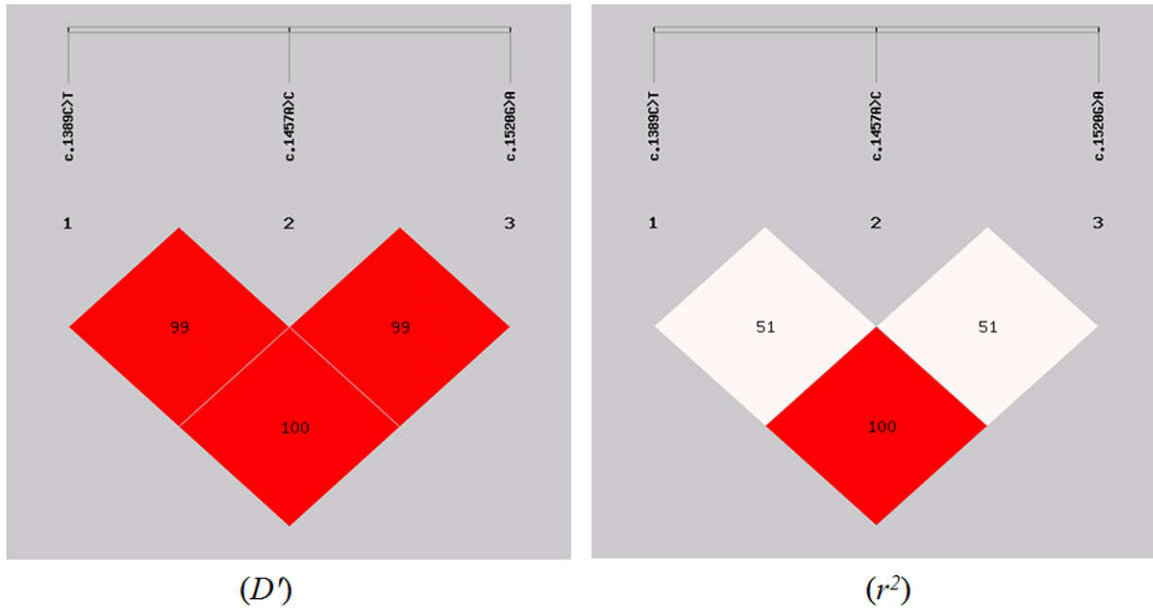
39

40

41

42

43



44

45 **Figure S2** Linkage disequilibrium (LD) analysis of three SNP loci in the GD goats. Numbers  
 46 in each cell represent pairwise  $D'$  and  $r^2$  values (%).

47 *Note:* When  $r^2 > 0.33$  and  $D' > 0.5$ , the linkage disequilibrium was considered strong<sup>22, 23</sup>.