

## Supporting information

### Thalidomide A-loaded and octreotide-functionalized unimolecular micelles for targeted neuroendocrine cancer therapy

Renata Jaskula-Sztul<sup>a, 1</sup>, Wenjin Xu<sup>b, 1</sup>, Guojun Chen<sup>b, c</sup>, April Harrison<sup>a</sup>, Ajitha Dammalapati<sup>a</sup>,  
Renu Nair<sup>a</sup>, Yiqiang Cheng<sup>d</sup>, Shaoqin Gong<sup>b, c, \*</sup>, and Herbert Chen<sup>e, \*</sup>

Figure S1.

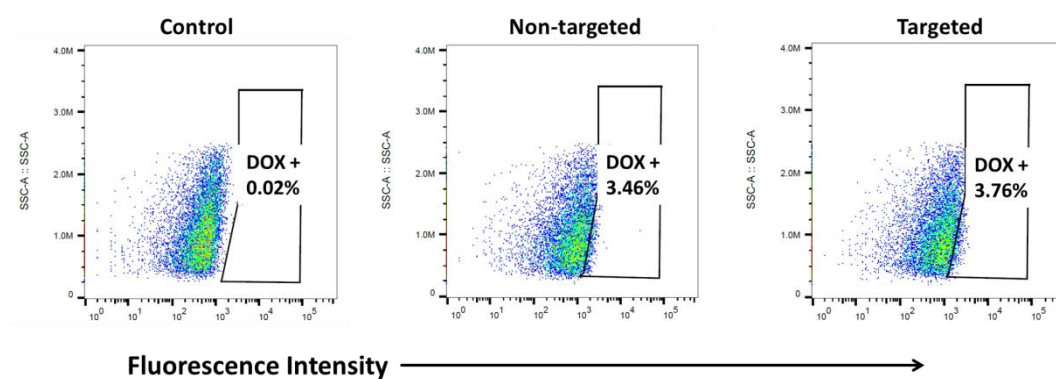


Figure S1. Flow cytometry analyses of the cellular uptake of micelles in WI-38 cells that do not overexpress SSTR. These cells were treated with either pure medium (control), or DOX-loaded non-targeted, or DOX-loaded OCT-conjugated (targeted) micelles (DOX concentration: 1  $\mu$ g/ml) for 2 h at 37 oC. There was no difference in cellular uptake between the non-targeted and targeted micelles.