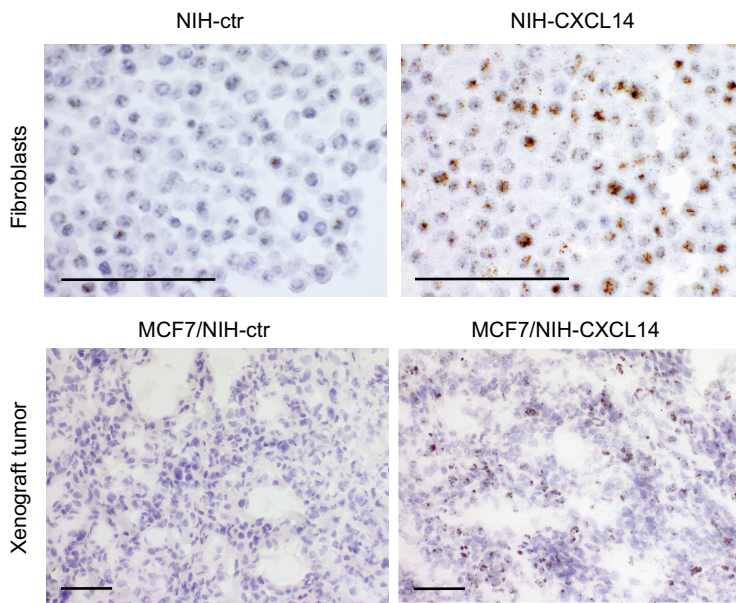
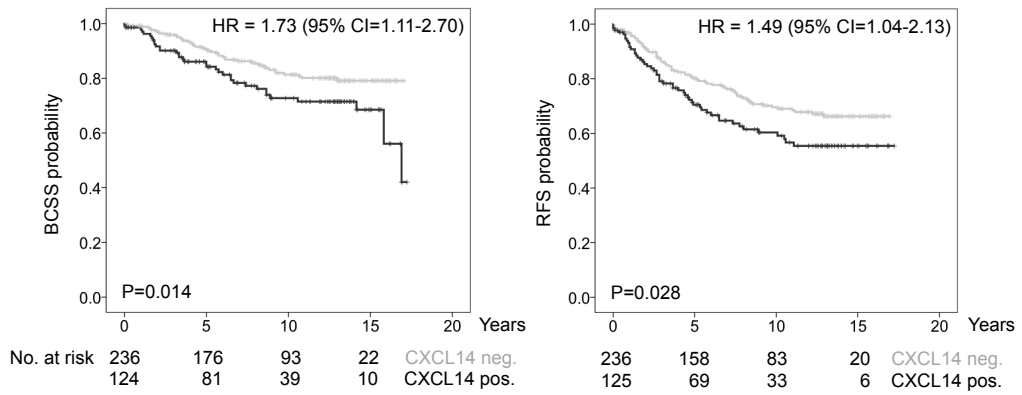


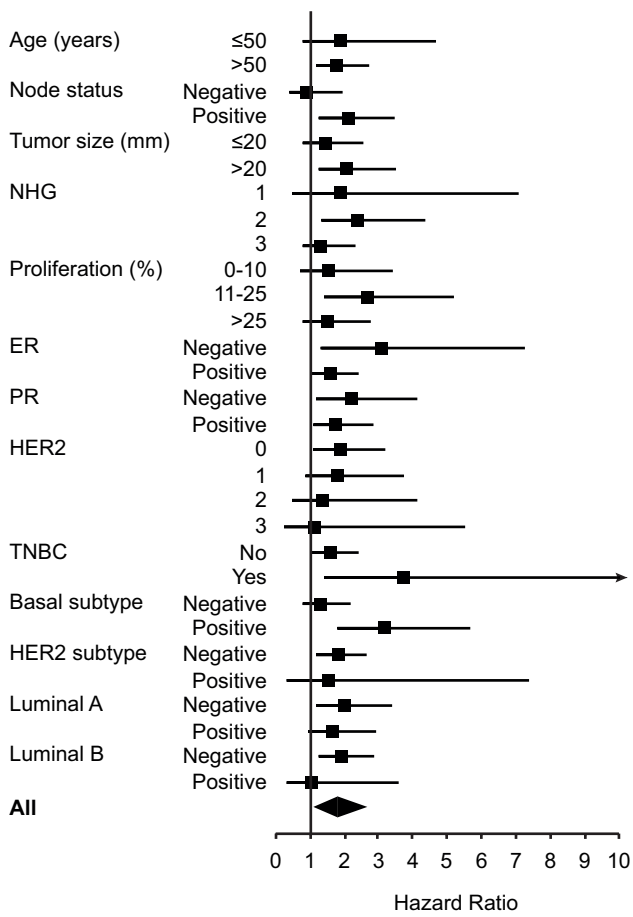
Supplementary Figure 1.



Supplementary Figure 2.



Supplementary Figure 3.



Supplementary Table 1.

Supplementary Table 1: Associations between total CXCL14 expression and clinicopathological parameters, breast cancer subtypes, adjuvant therapy or stroma abundance.			
Number (CXCL14 data)	N=498 (394)		
CXCL14 expression n (%)	Negative	Positive	p-value
	256 (65)	138 (35)	
Age (years)			
≤50	46 (11.7)	20 (5.1)	0.379
>50	210 (53.3)	118 (29.9)	
Tumor size (mm)			
≤20	150 (38.1)	83 (21.0)	0.765
>20	106 (26.9)	55 (14.0)	
NHG			
I	59 (15.0)	34 (8.6)	0.705
II	104 (26.4)	55 (14.0)	
III	93 (23.6)	48 (12.1)	
Missing	0 (0)	1 (0.3)	
Node status			
Negative	148 (37.6)	62 (15.7)	0.098
Positive	90 (22.8)	55 (14.0)	
Missing	18 (4.6)	21 (5.3)	
ER status			
Negative	44 (11.2)	15 (3.8)	0.094
Positive	212 (53.8)	123 (31.2)	
PR status			
Negative	86 (21.8)	40 (10.2)	0.350
Positive	170 (43.2)	98 (24.8)	
HER2 status			
0	149 (37.8)	70 (17.8)	0.951
1	54 (13.8)	41 (10.4)	
2	21 (5.3)	18 (4.6)	
3	28 (7.1)	7 (1.7)	
Missing	4 (1.0)	2 (0.5)	
TNBC			
No	18 (4.6)	10 (2.5)	0.937
Yes	238 (60.4)	128 (32.5)	
Ki67 (%)			
0-10	89 (22.6)	48 (12.2)	0.750
11-25	82 (20.8)	44 (11.2)	
>25	73 (18.6)	36 (9.1)	
Missing	12 (3.0)	10 (2.5)	
Subtype			
Luminal A	131 (33.3)	76 (19.3)	0.982
Luminal B	22 (5.6)	14 (3.6)	
HER2	19 (4.8)	4 (1.0)	
Basal	38 (9.6)	26 (6.5)	
Missing	46 (11.7)	18 (4.6)	
Adjuvant therapy			
No	94 (23.9)	52 (13.2)	0.395
Yes	109 (27.6)	49 (12.4)	
Missing	53 (13.5)	37 (9.4)	
Stroma abundance			
1	64 (16.3)	34 (8.6)	0.473
2	105 (26.7)	67 (17.0)	
3	80 (20.3)	35 (8.9)	
Missing	7 (1.7)	2 (0.5)	
X ² test for linear trend. Hormone receptor status was assessed by immunohistochemistry using a cutoff at 10% positive nuclei, according to current clinical guidelines in Sweden.			

Supplementary Table 2.

Supplementary Table 2: Multivariable analysis for survival data, including total CXCL14 expression.						
Number (CXCL14 data)			N=498 (394)			
	Breast cancer specific survival			Recurrence free survival		
	HR	95% CI	p-value	HR	95% CI	p-value
Age (years)						
≤50	1			1		
>50	0.798	0.433-1.469	0.468	0.762	0.473-1.228	0.265
Tumor size (mm)						
≤20	1			1		
>20	1.643	0.988-2.731	0.056	1.222	0.822-1.818	0.321
NHG						
I	1			1		
II	2.444	0.903-6.618	0.079	3.064	1.514-6.202	0.002*
III	6.115	2.318-16.14	<0.0001*	5.707	2.817-11.560	<0.0001*
Node status						
Negative	1			1		
Positive	4.238	2.448-7.338	<0.0001*	2.486	1.659-3.724	<0.0001*
ER status						
Negative	1			1		
Positive	0.635	0.306-1.318	0.223	0.982	0.533-1.811	0.955
HER2 status						
0	1			1		
1	1.44	0.811-2.557	0.213	1.492	0.954-2.335	0.080
2	1.008	0.423-2.399	0.986	1.206	0.622-2.338	0.579
3	0.809	0.356-1.870	0.620	0.735	0.361-1.496	0.396
Stromal CXCL14						
Negative	1			1		
Positive	1.860	1.129-3.064	0.015*	1.525	1.029-2.260	0.036*

Cox regression analysis using total CXCL14 as categorical variable in multivariable analysis.
* p= <0.05