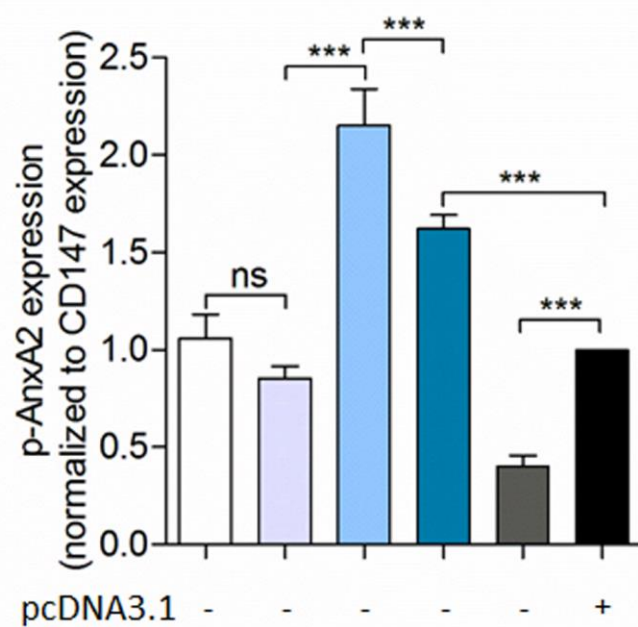
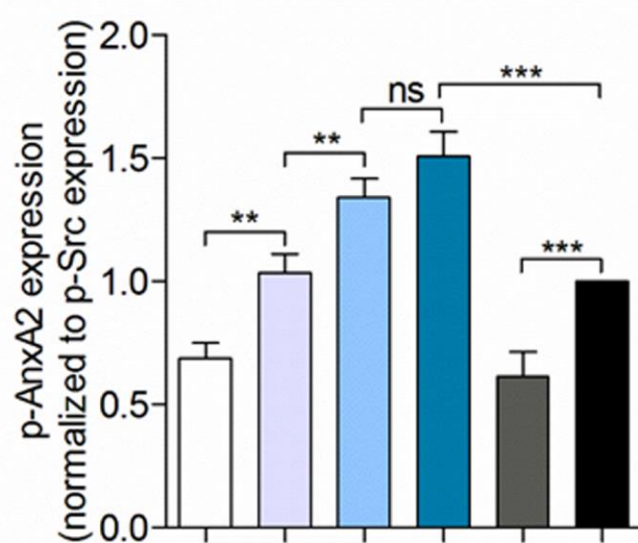


CD147 regulates cancer migration *via* direct interaction with Annexin A2 and DOCK3- β -catenin-WAVE2 signaling

Supplementary Material

ESM_1 Quantification of p-Annexin A2 normalized to levels of CD147 and p-Src expression. Data represent average \pm SD; *** $p < 0.001$, ** $p < 0.01$, ns $p > 0.05$ by ANOVA. These analyses correspond to the image shown in Fig. 2e

ESM_2-3 DOCK3 suppresses lamellipodium dynamics. Movie ESM_2 shows that lamellipodium dynamics was enhanced in cells transfected with siDOCK3. Cells transfected with siCtrl were used as control (ESM_3). These movies correspond to the images shown in Fig. 4i



pcDNA3.1	-	-	-	-	-	+
CD147-pcDNA3.1	+	+	-	-	+	-
Src-pcDNA3.1	-	+	-	+	-	-
SrcY570F-pcDNA3.1	+	-	+	-	-	-