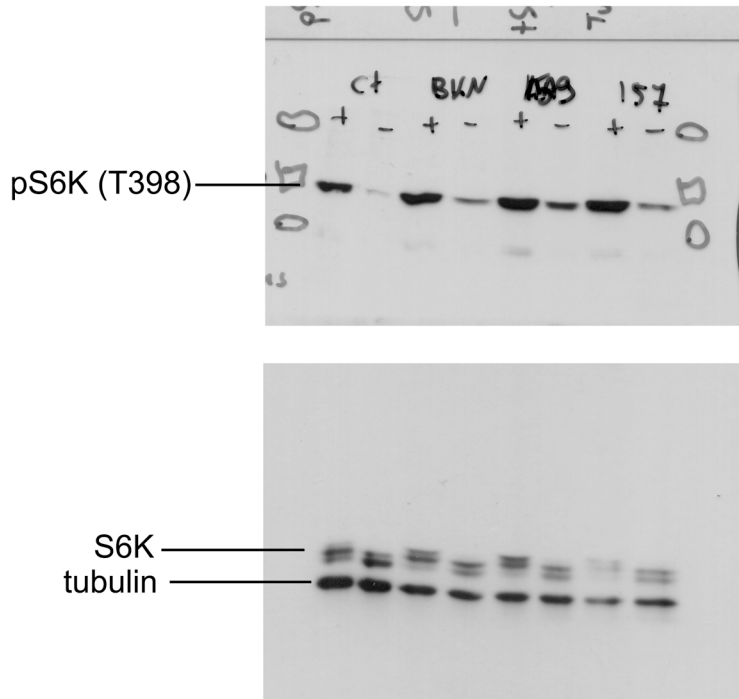
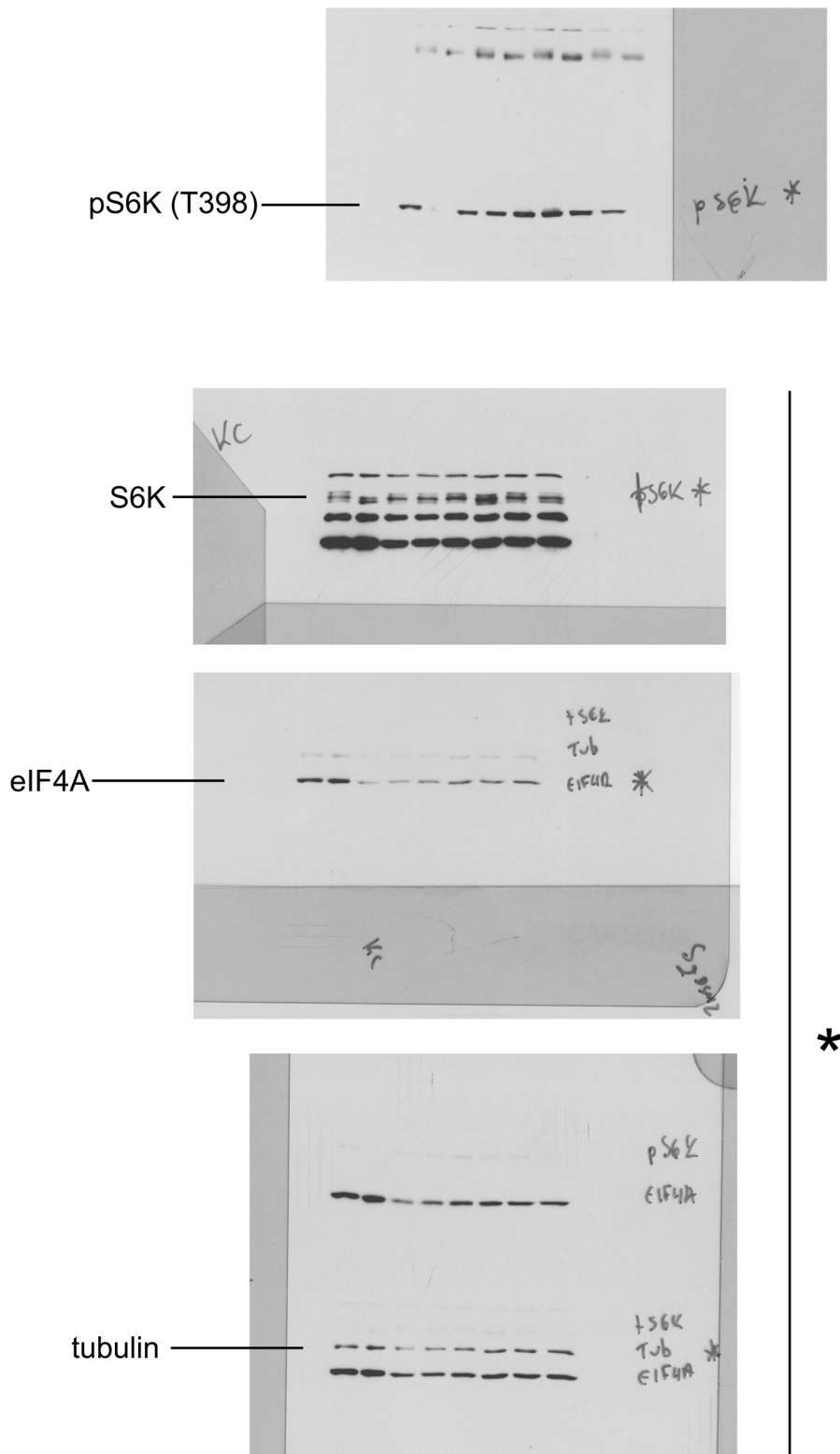


Figure 1a



The membrane was co-incubated with anti-S6K and anti-tubulin antibody.

Figure 1b



* The membrane was co-incubated with anti-S6K, anti-tubulin and anti-eIF4A and antibody. Different exposures were used for the figure.

Figure 1e

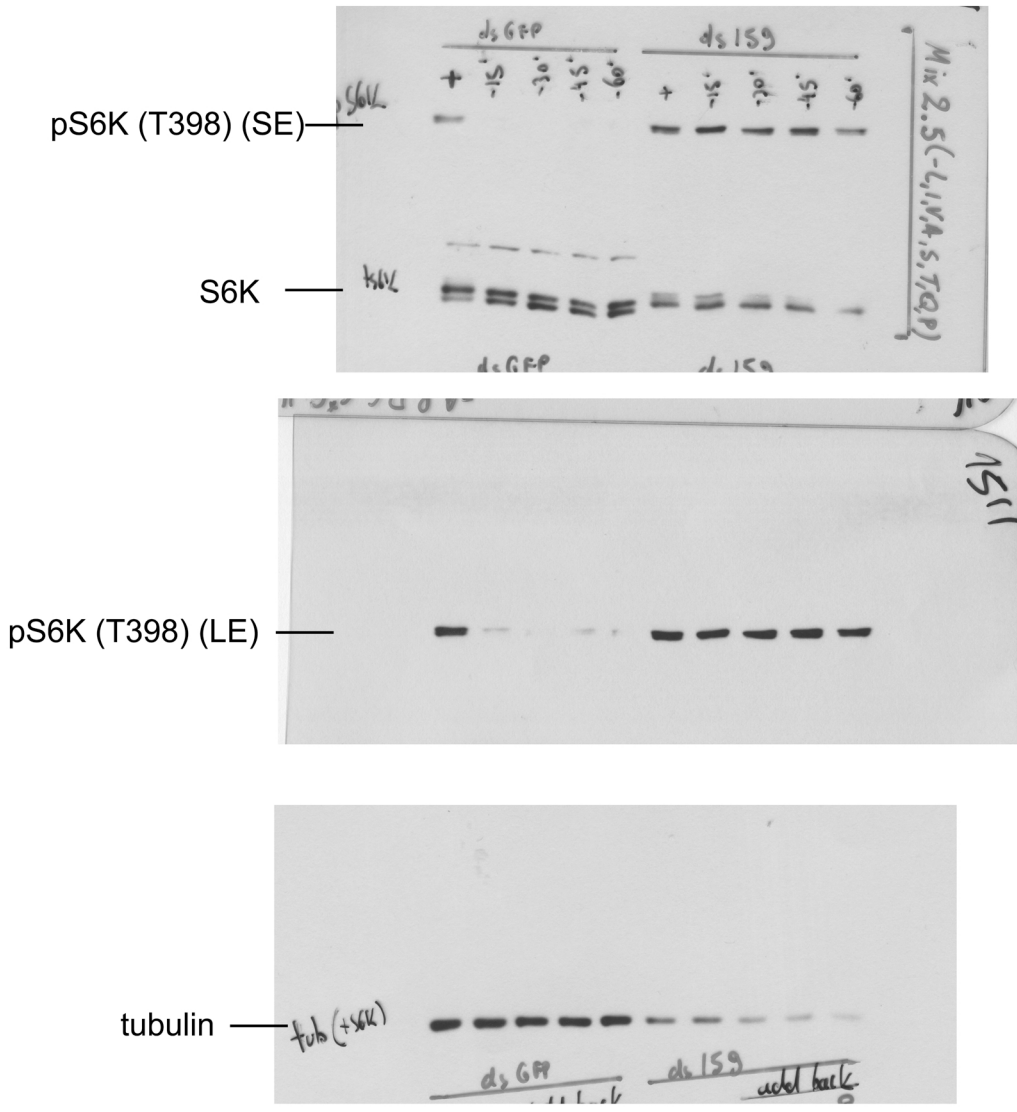
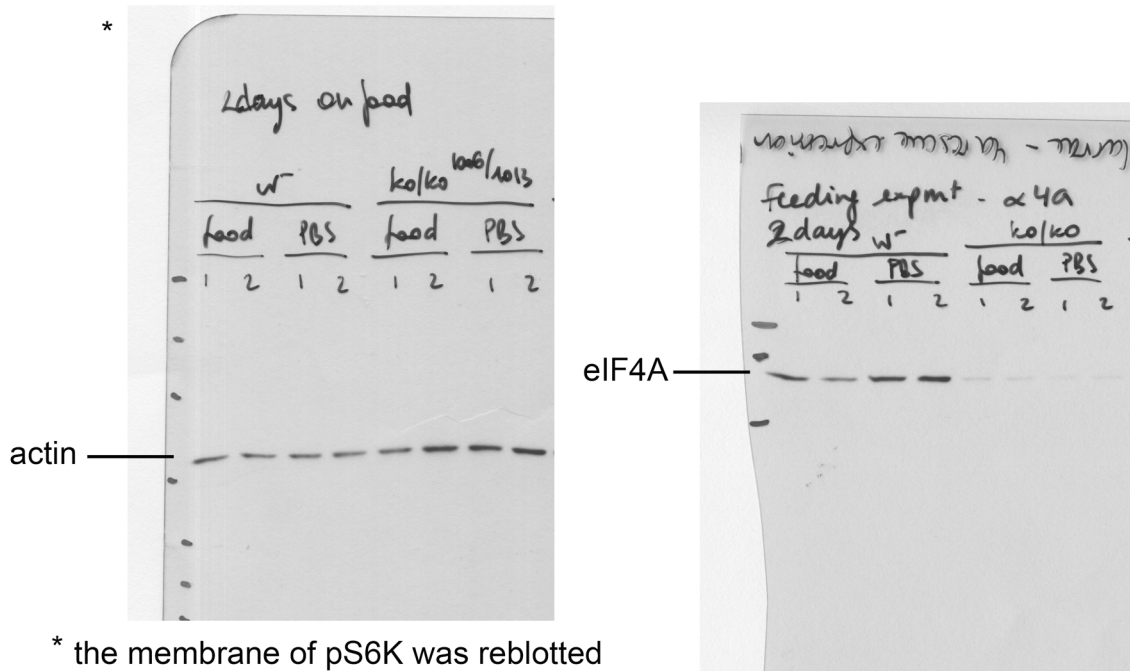
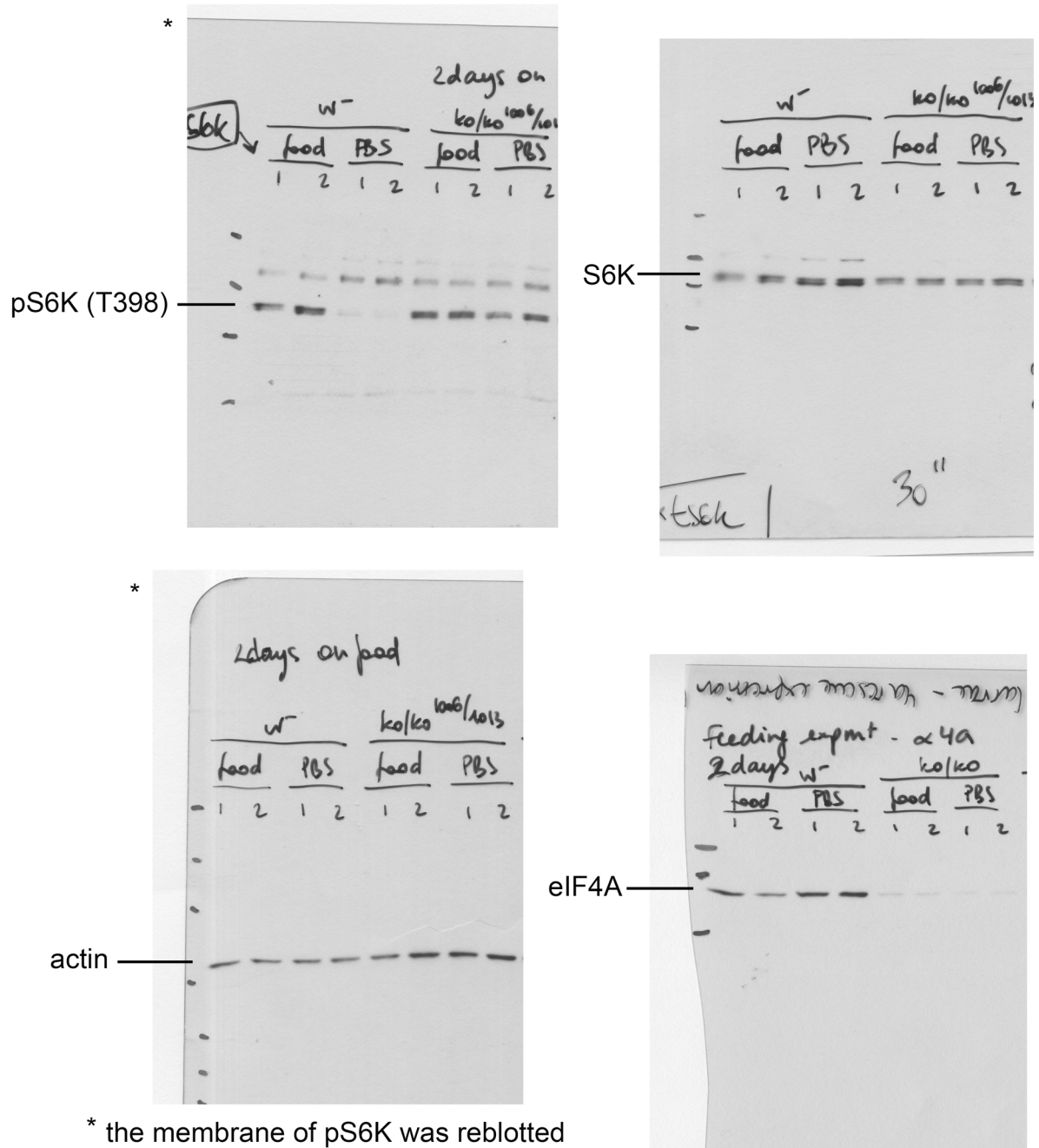


Figure 1f



* the membrane of pS6K was reblotted with the mouse anti-actin antibody.