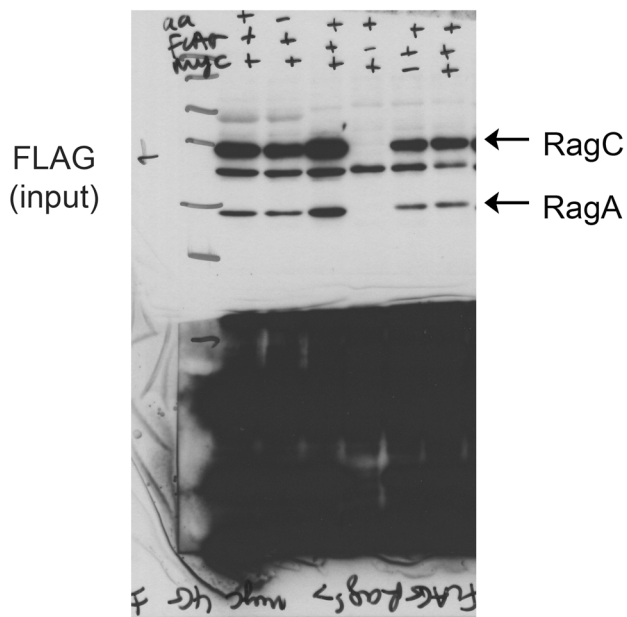
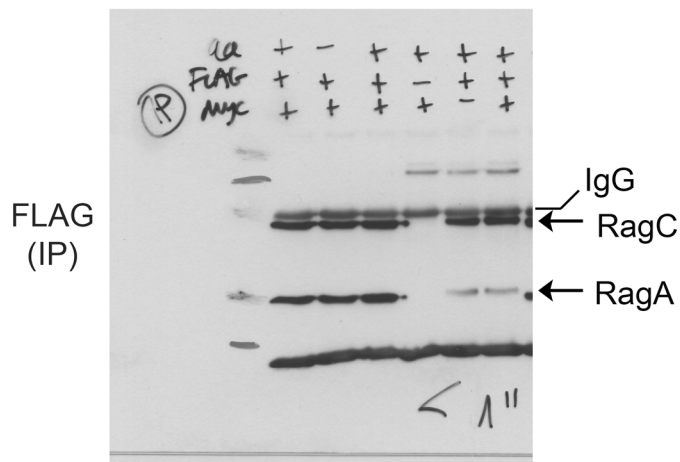
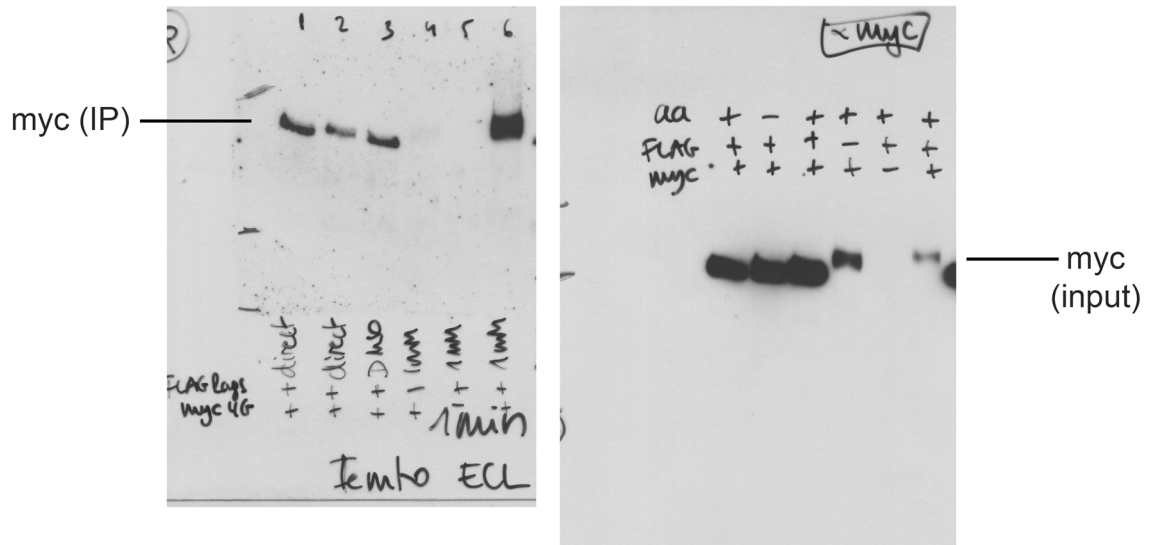
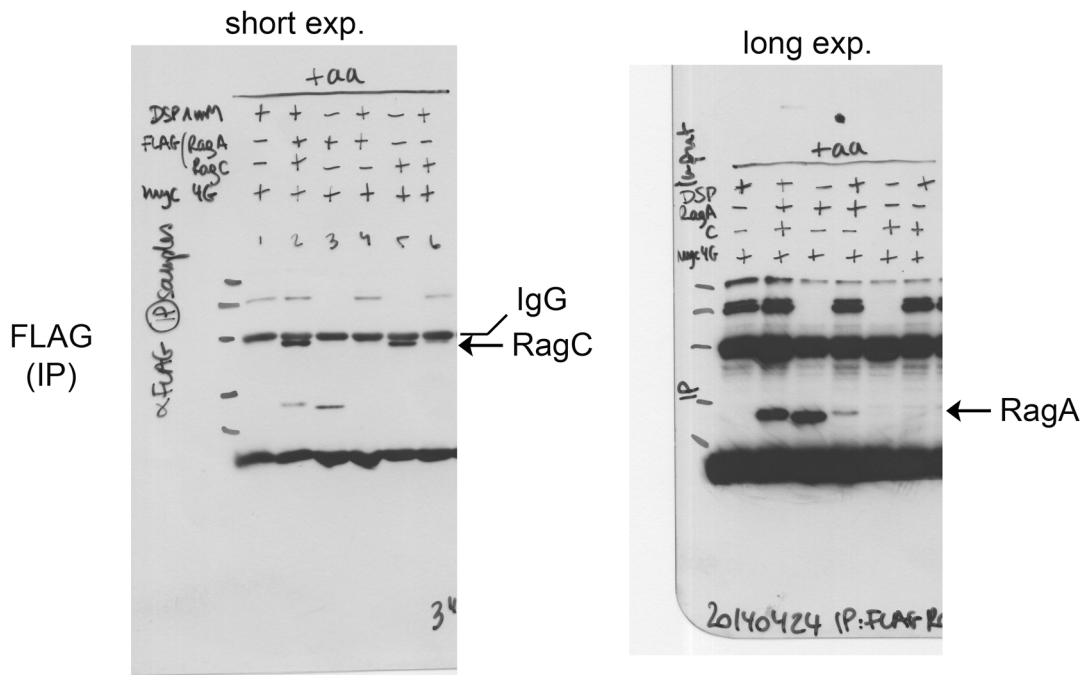


# Figure 4a

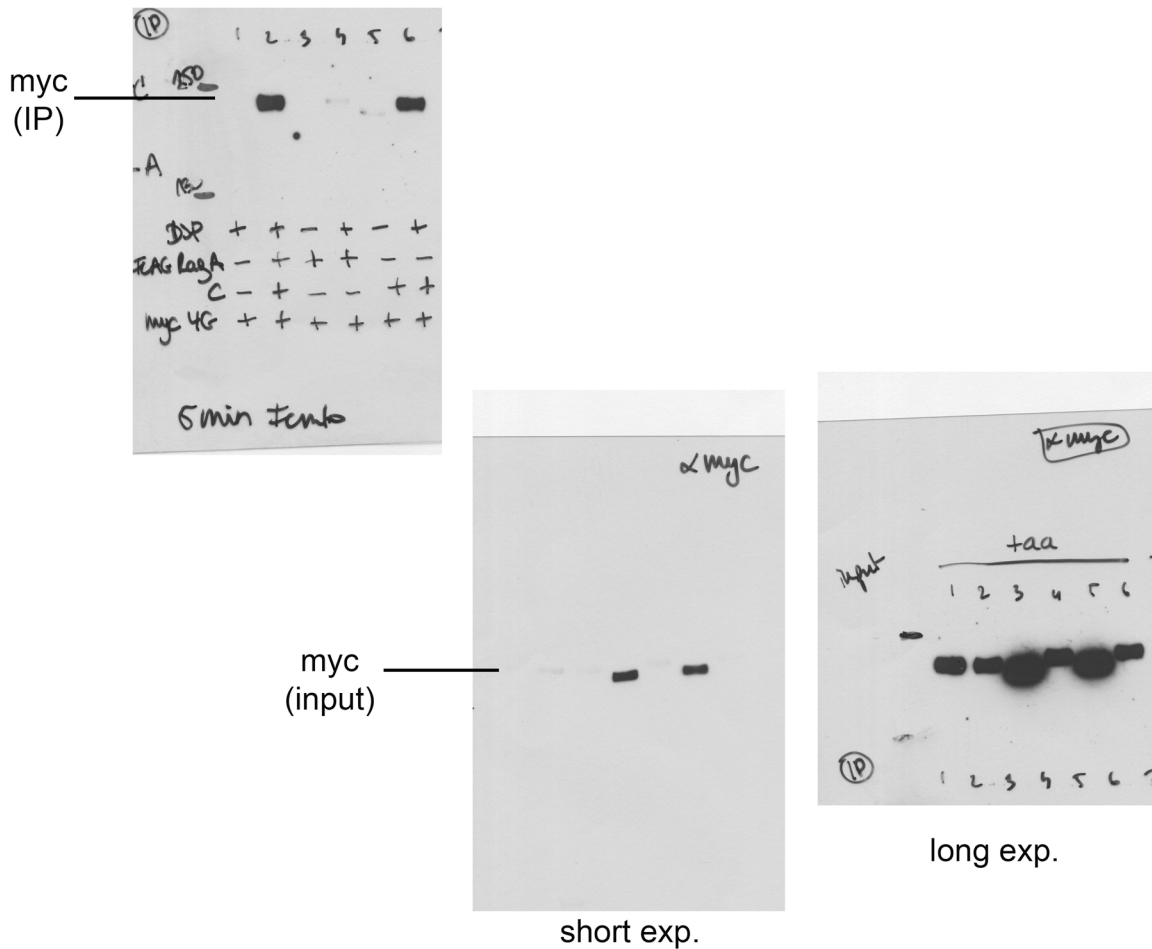
Figure 4a corresponds to lanes 3-6 on all blots



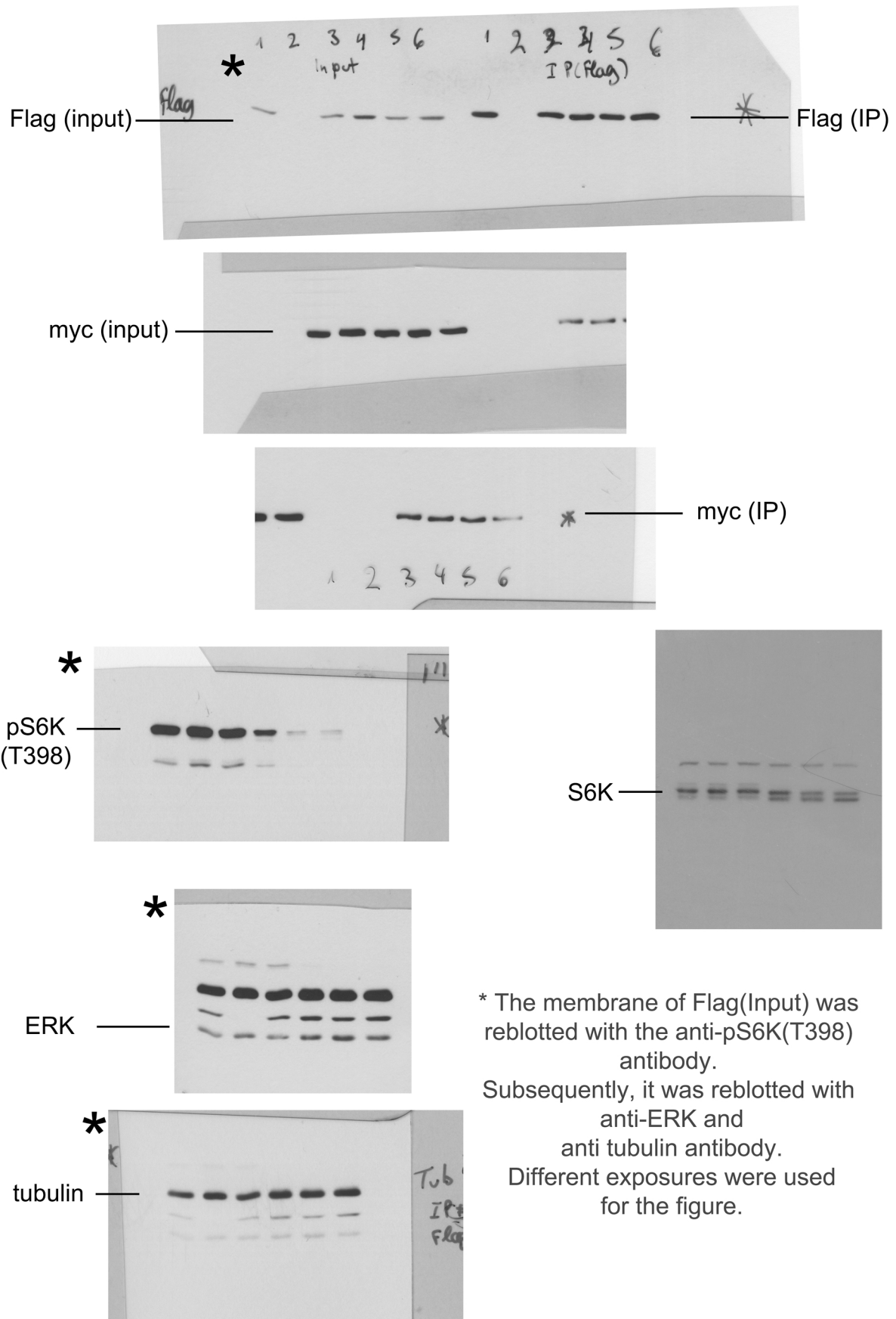
# Figure 4b



FLAG-RagA and FLAG-RagC were detected on the same membrane incubated with mouse anti-FLAG antibody. Different exposures were used for the figure.



# Figure 4c



\* The membrane of Flag(Input) was reblotted with the anti-pS6K(T398) antibody. Subsequently, it was reblotted with anti-ERK and anti tubulin antibody. Different exposures were used for the figure.