

Figure 6b 1/2

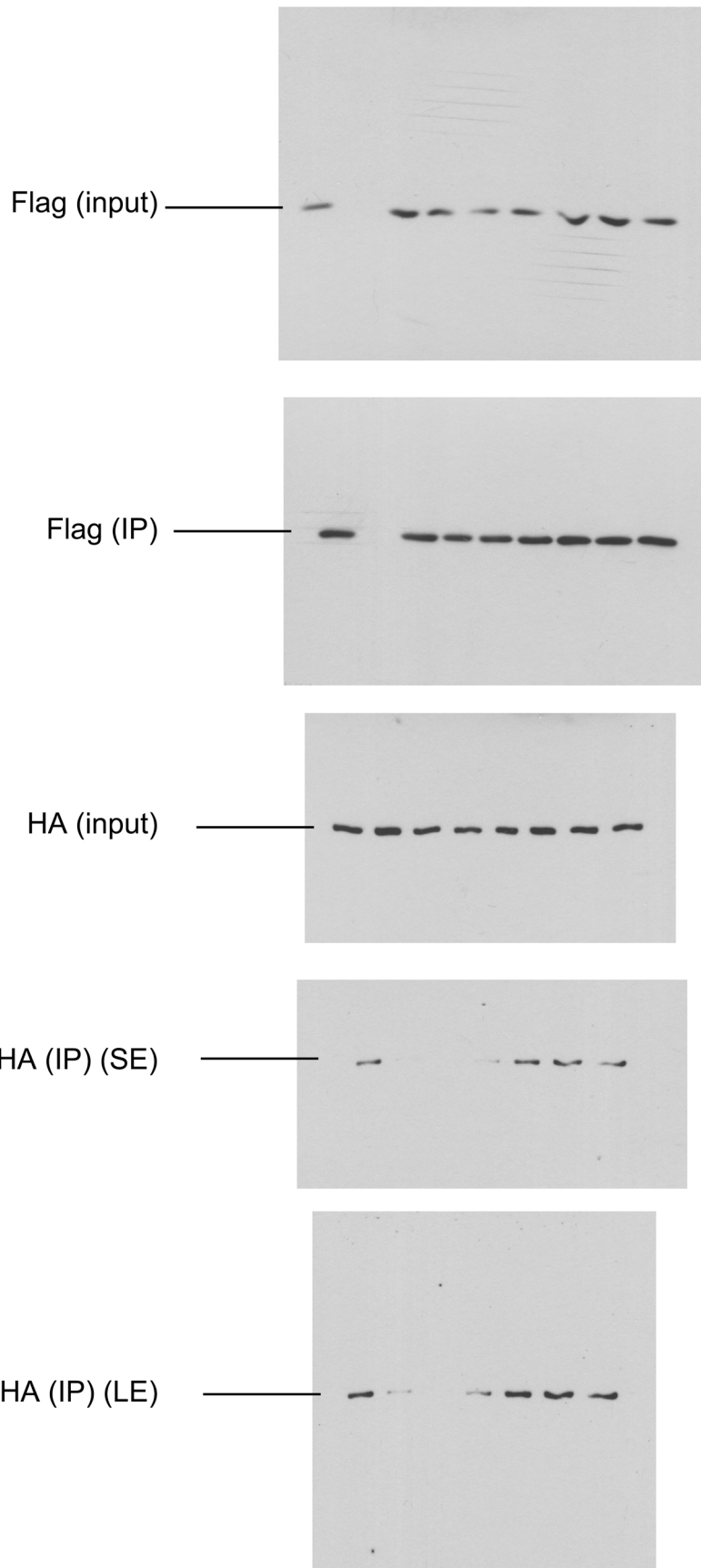
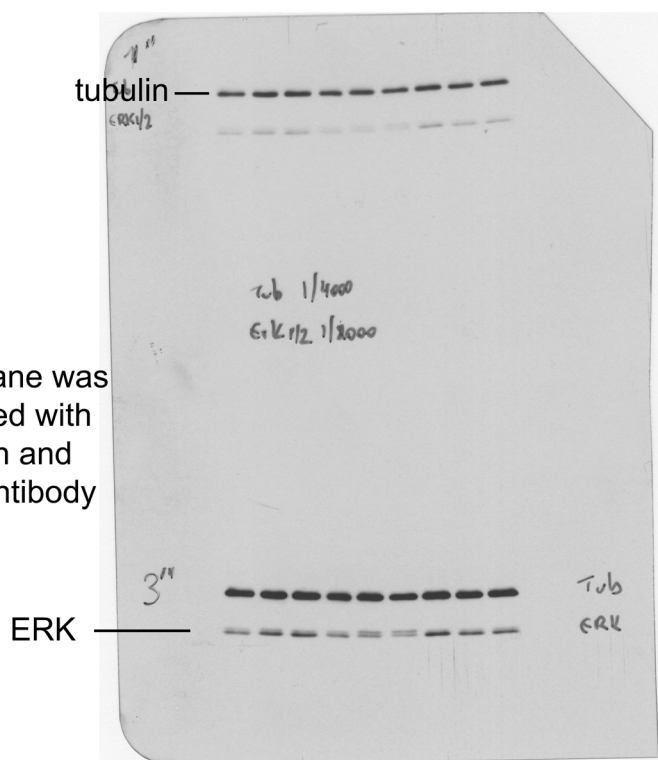
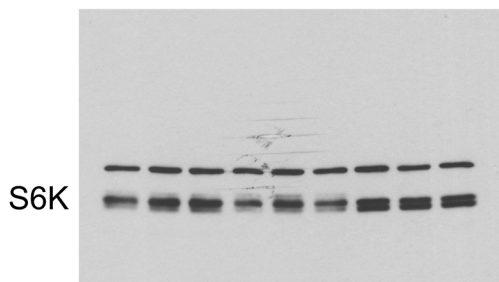
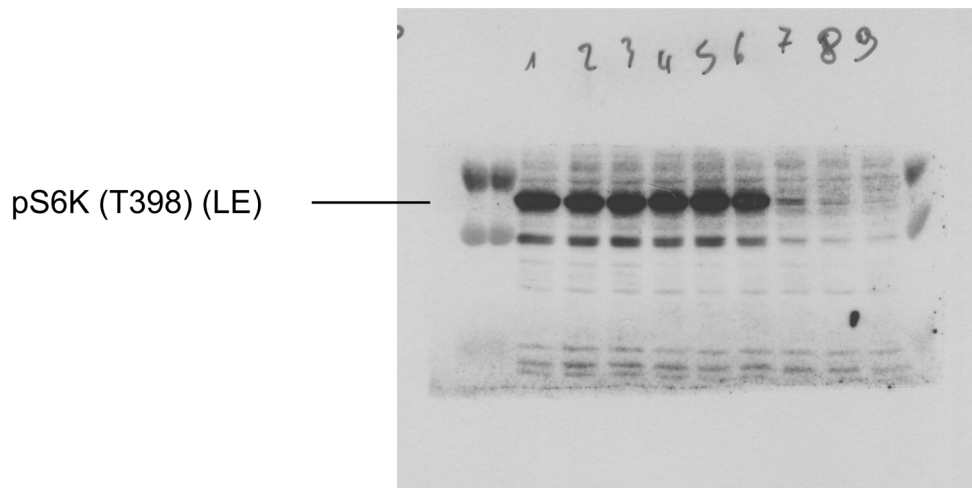
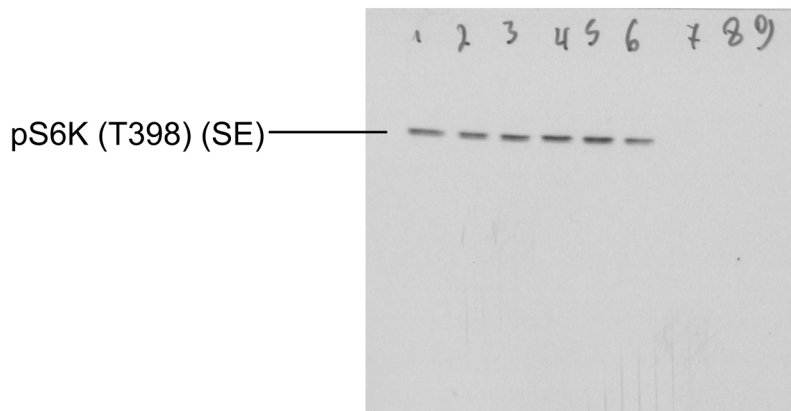


Figure 6b 2/2



The membrane was co-incubated with anti-tubulin and anti-ERK antibody

Figure 6c

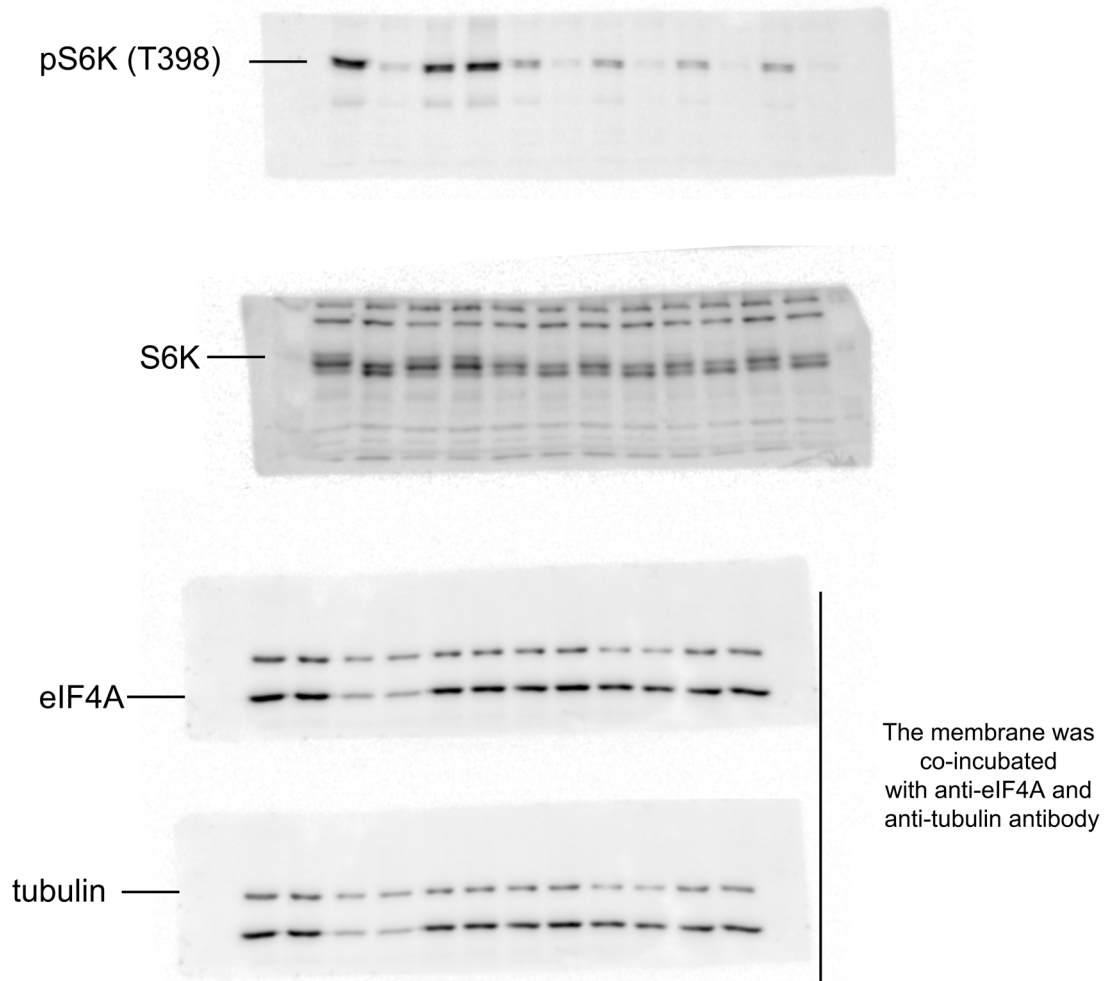
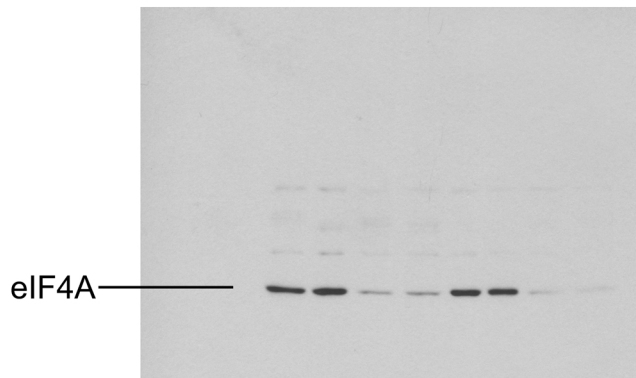
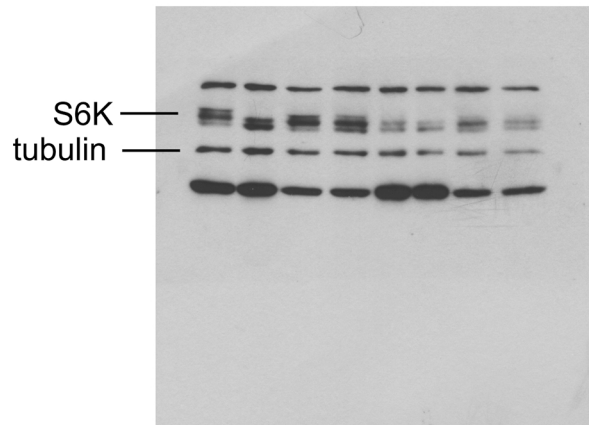
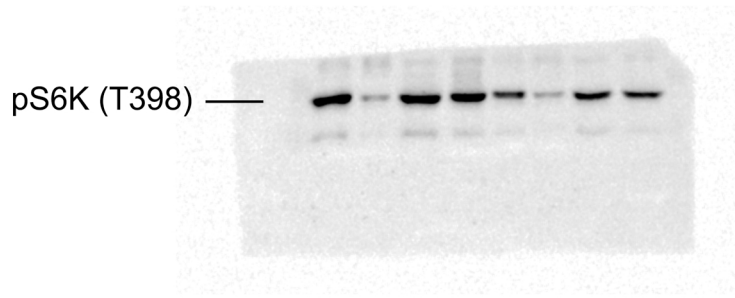
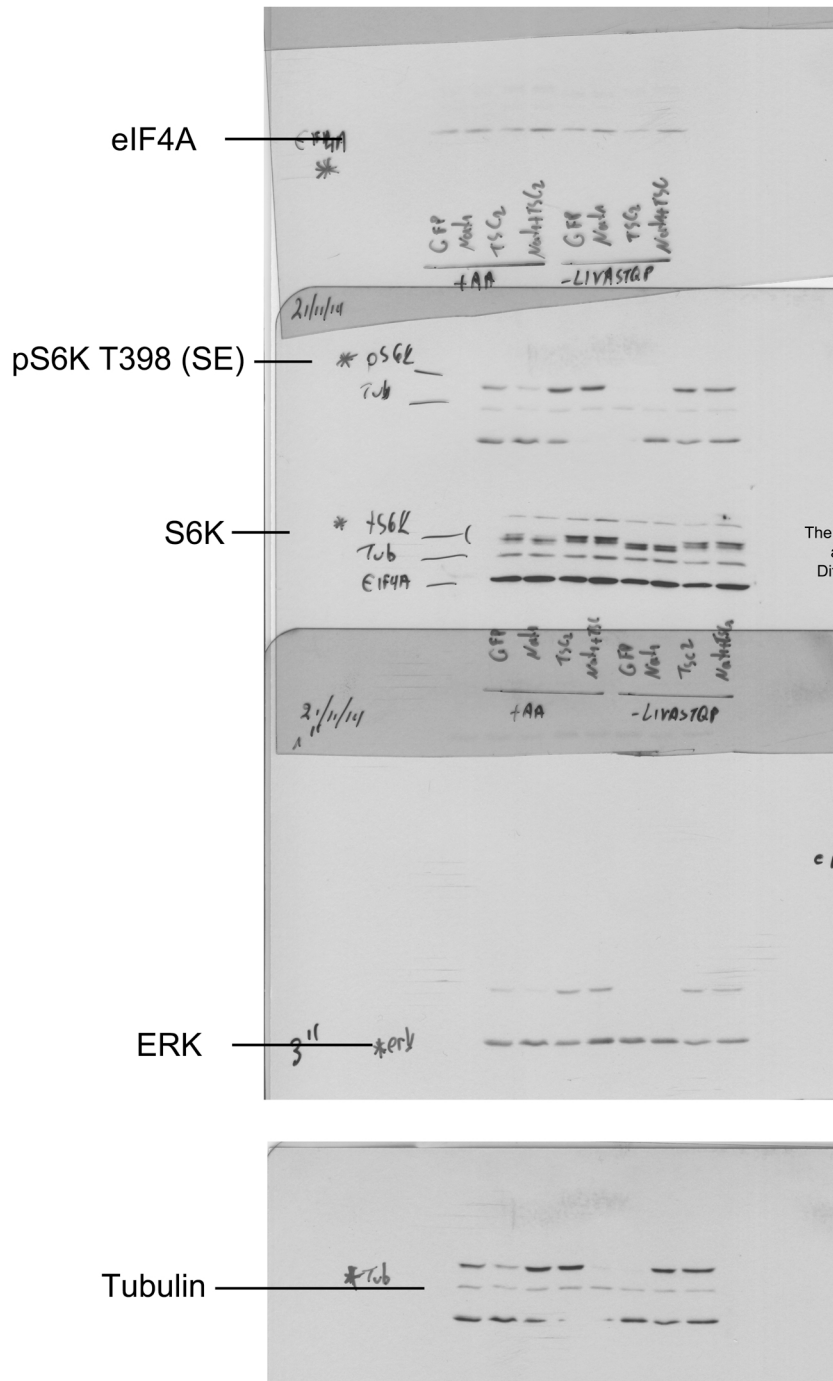
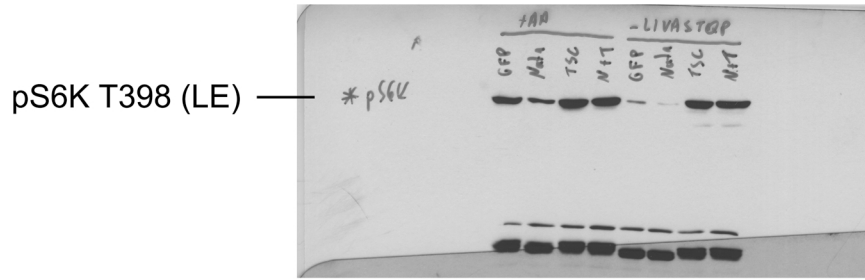


Figure 6d



The membrane was co-incubated with anti-S6K, anti-tubulin and anti-eIF4A and antibody. Different exposures were used for the figure.

Figure 6e



The membrane was co-incubated with anti-S6K, anti-tubulin and anti-eIF4A and antibody. Different exposures were used for the figure.

*The membrane was co-incubated with anti-pS6K (T398), anti-tubulin antibody and anti-ERK antibody. Different exposures were used for the figure.