



# Consensus atlas

*for scoring haemophilic arthropathy on  
X-rays according to the Pettersson score*

Wouter Foppen, MD  
Irene C. van der Schaaf, MD PhD  
Frederik J.A. Beek, MD PhD  
Helena M. Verkooijen, MD PhD  
Kathelijn Fischer, MD PhD



UMC Utrecht  
Imaging Division

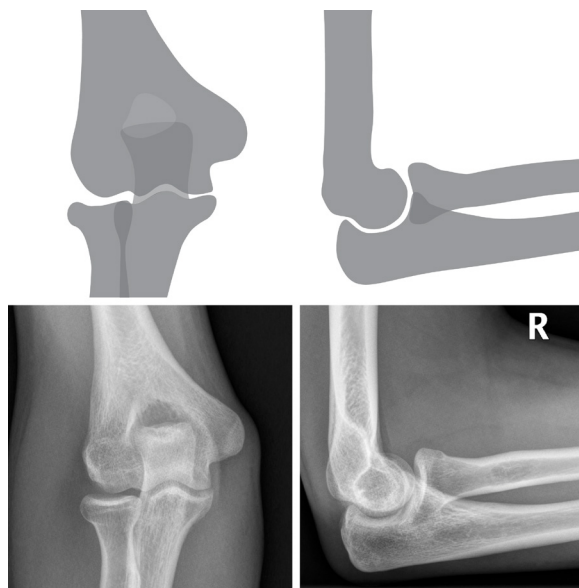


UMC Utrecht  
Julius Center

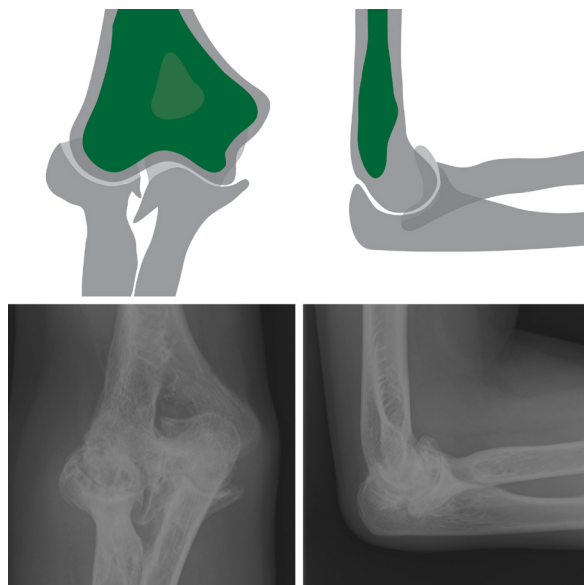


UMC Utrecht  
Van Creveldkliniek

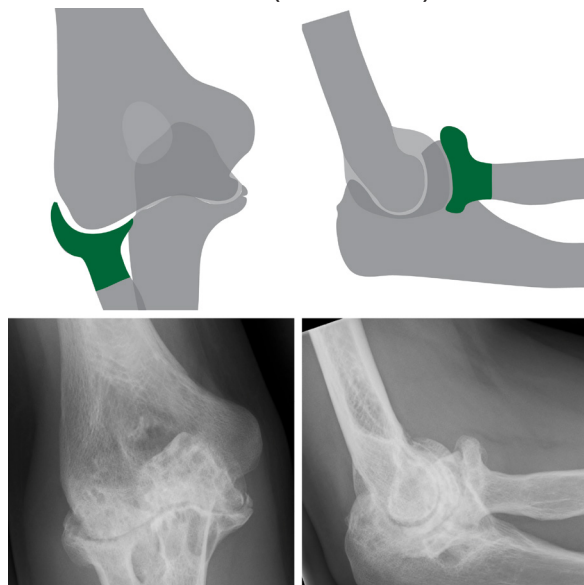
Normal antero-posterior and lateral X-rays of elbow.  
Score 0



'Osteoporosis' of the elbow.  
Present (subscore 1)



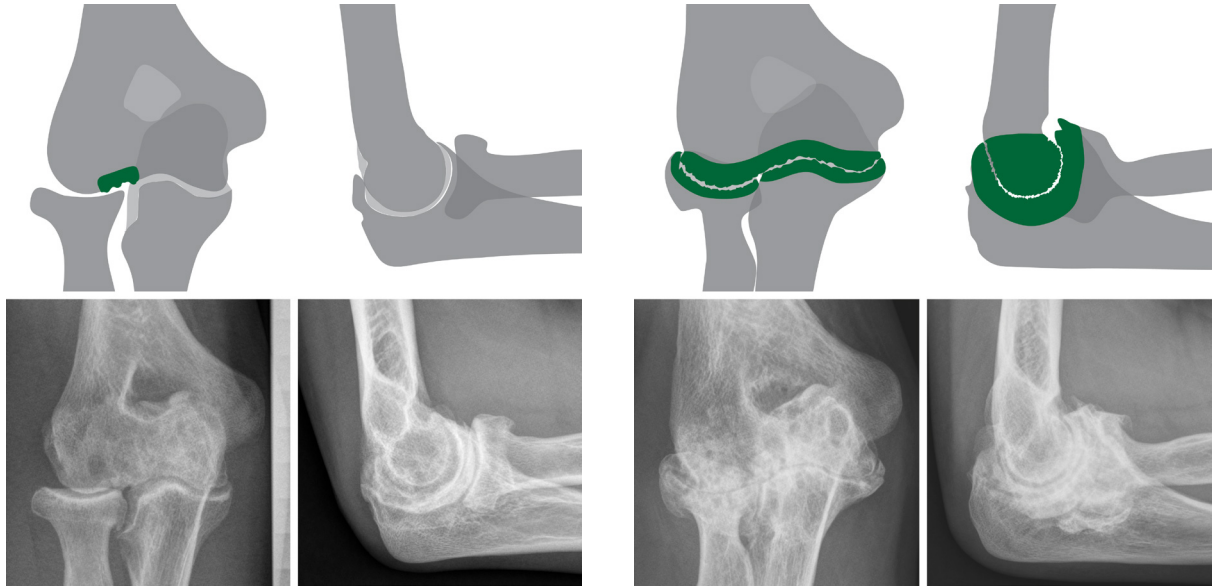
'Enlargement of epiphysis' of the elbow.  
Present (subscore 1)



'Irregularity of subchondral surface' of the elbow.

Slight (subscore 1)

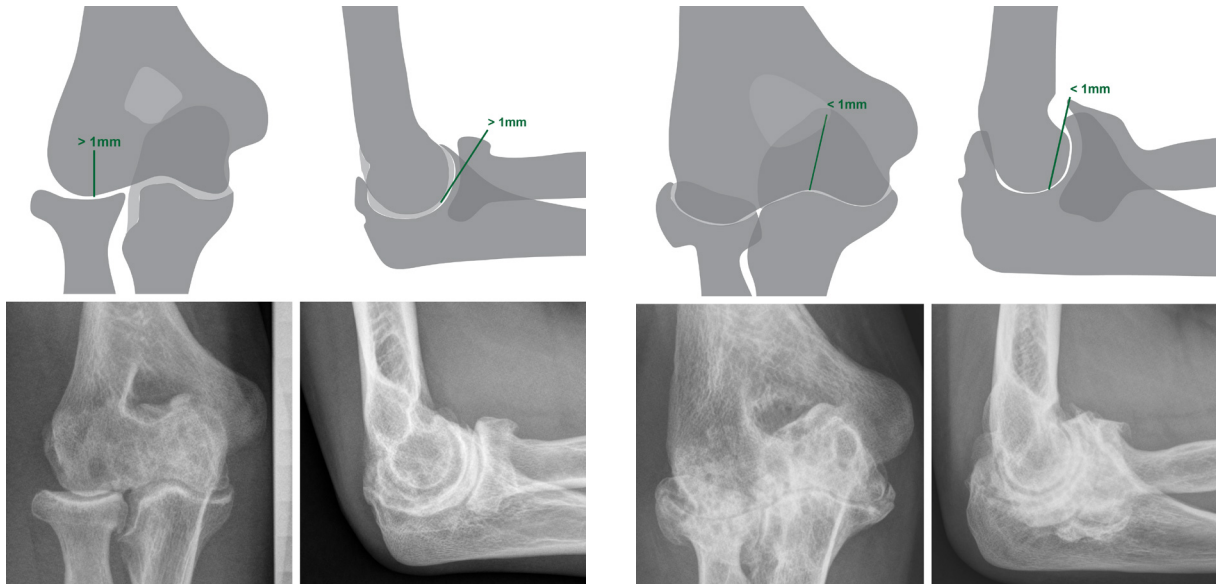
Pronounced (subscore 2)



'Narrowing of joint space' of the elbow.

<1mm (subscore 1)

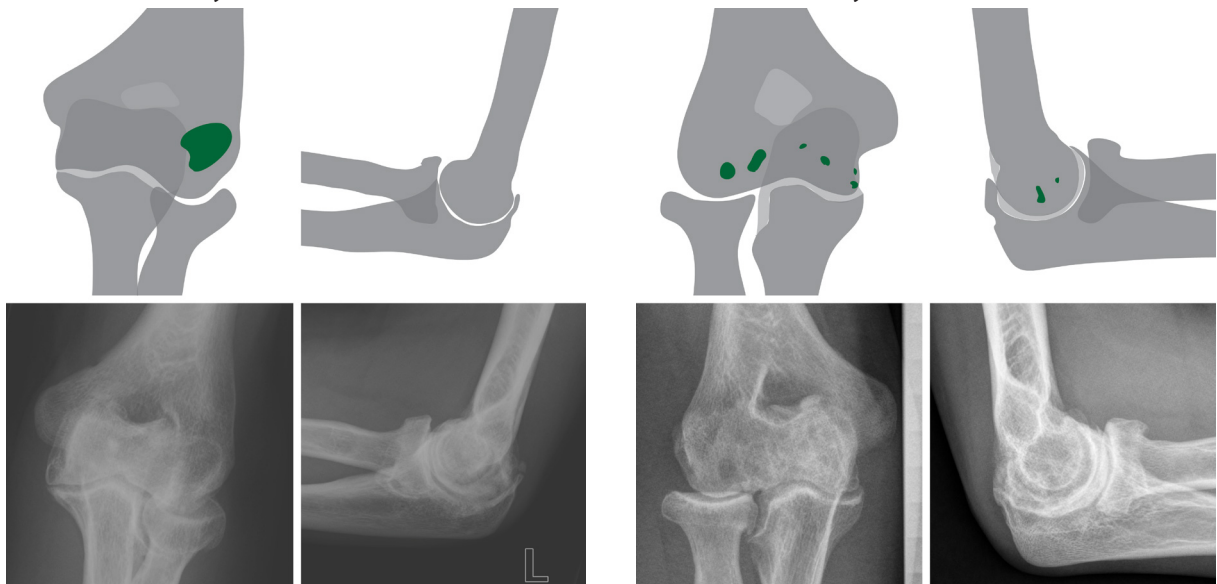
>1mm (subscore 2)



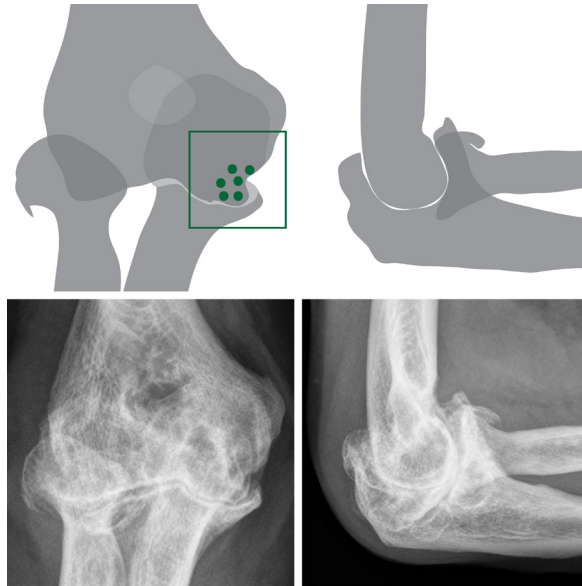
'Subchondral cyst formation' in the elbow.

1 cyst (subscore 1)

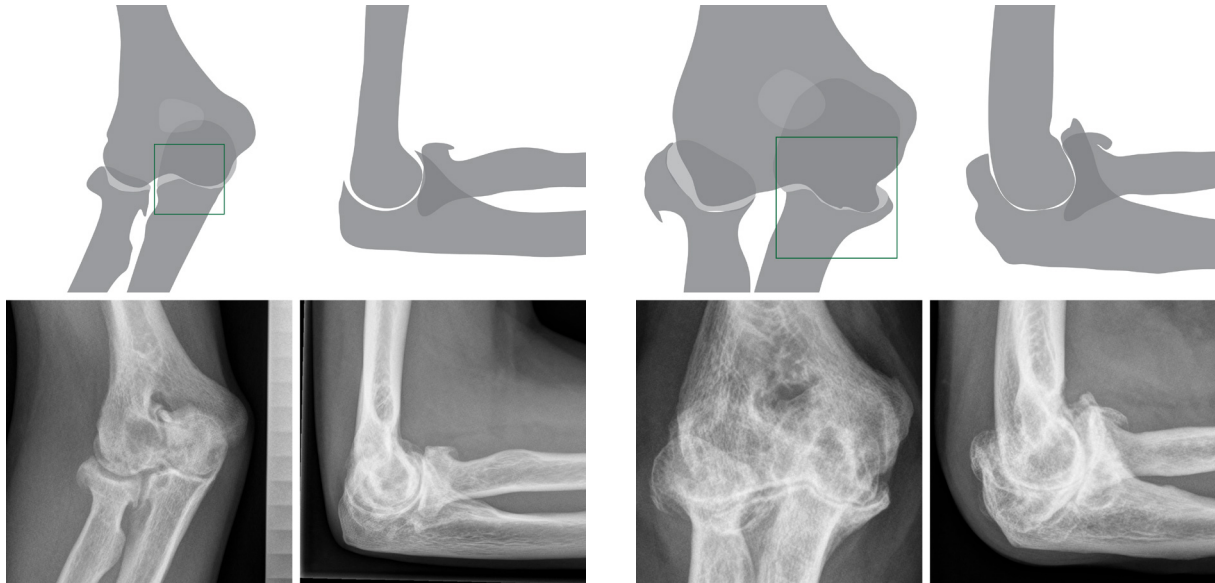
>1 cyst (subscore 2)



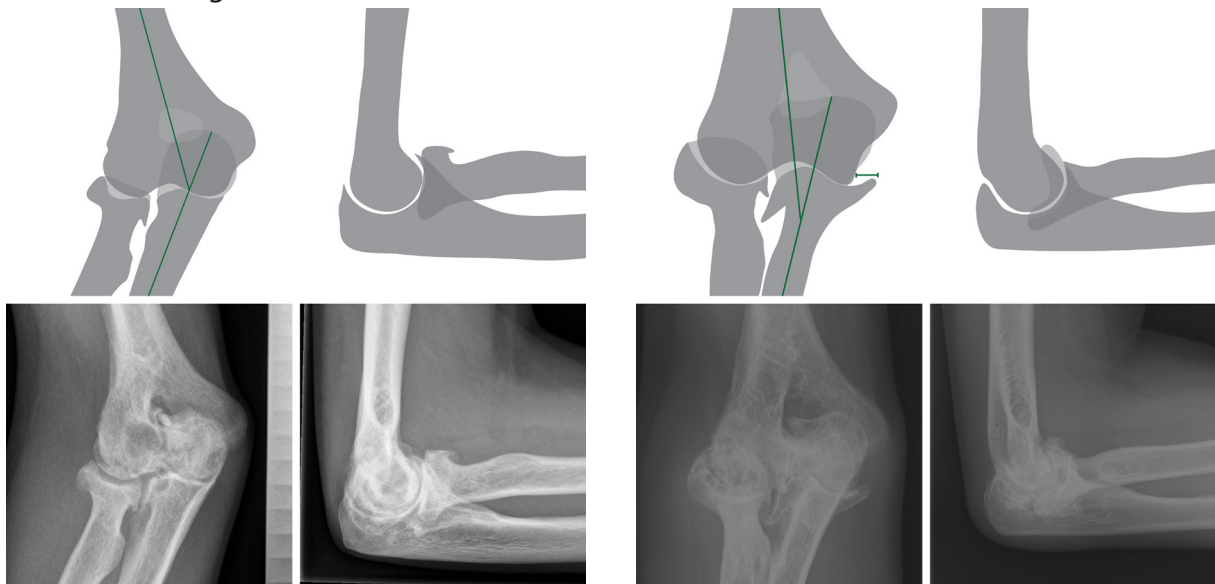
'Erosion at joint margins' of the elbow.  
Present (subscore 1)



'Incongruence between joint surfaces' of the elbow.  
Slight (subscore 1)                      Pronounced (subscore 2)



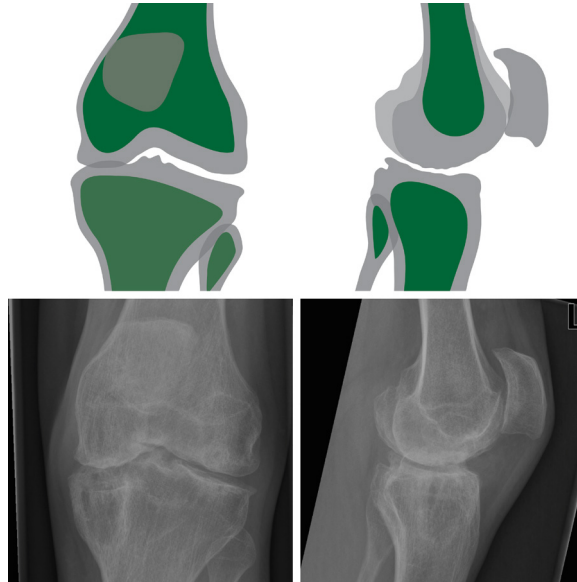
'Deformity (angulation and/or displacement) of articulating bones' of the elbow.  
Slight (subscore 1)                      Pronounced (subscore 2)



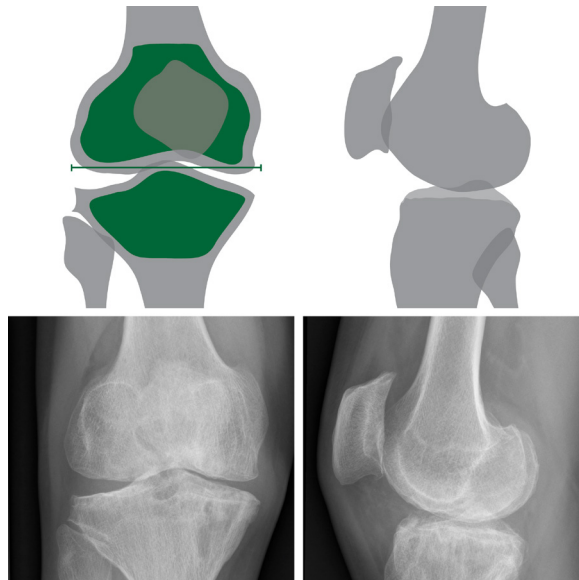
Normal antero-posterior and lateral X-rays of knee.  
Score 0



'Osteoporosis' of the knee.  
Present (subscore 1)



'Enlargement of epiphysis' of the knee.  
Present (subscore 1)

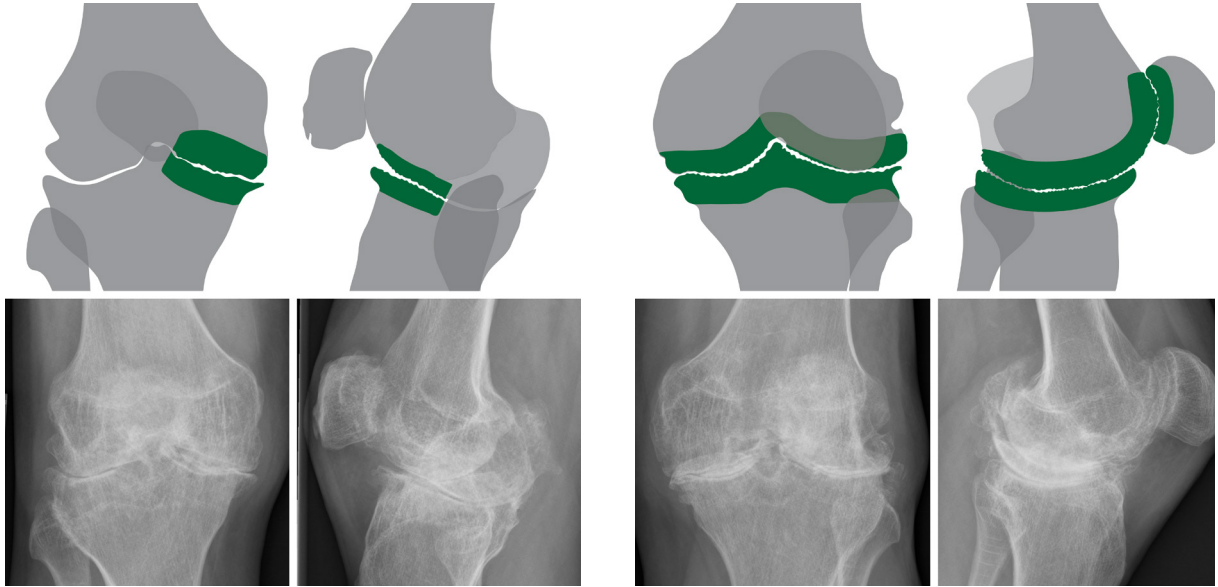




'Irregularity of subchondral surface' of the knee.

Slight (subscore 1)

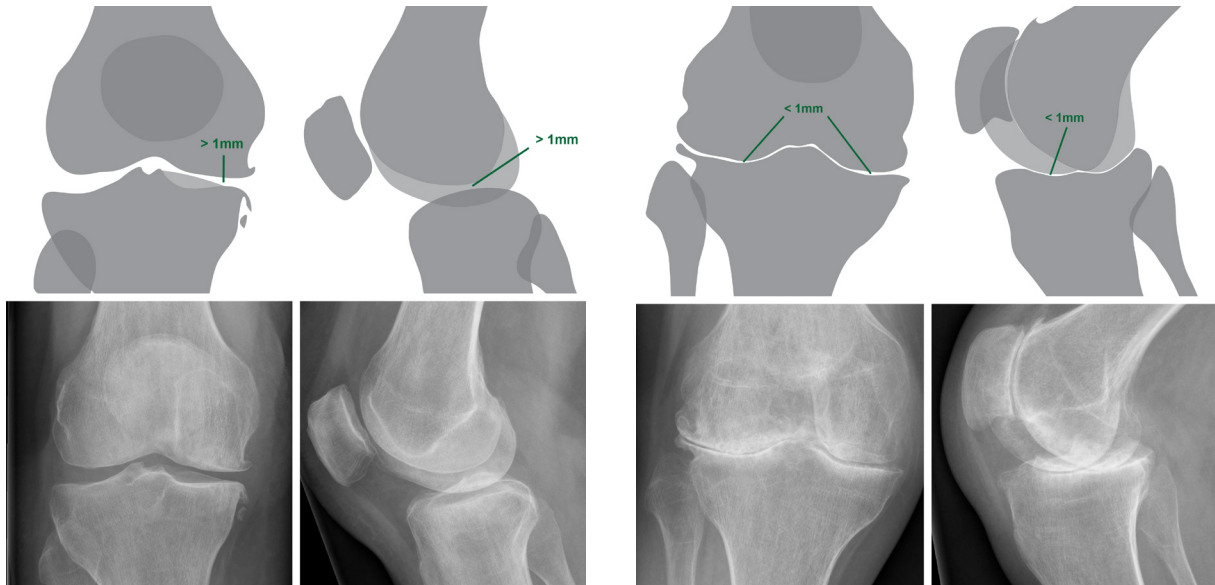
Pronounced (subscore 2)



'Narrowing of joint space' of the knee.

<1mm (subscore 1)

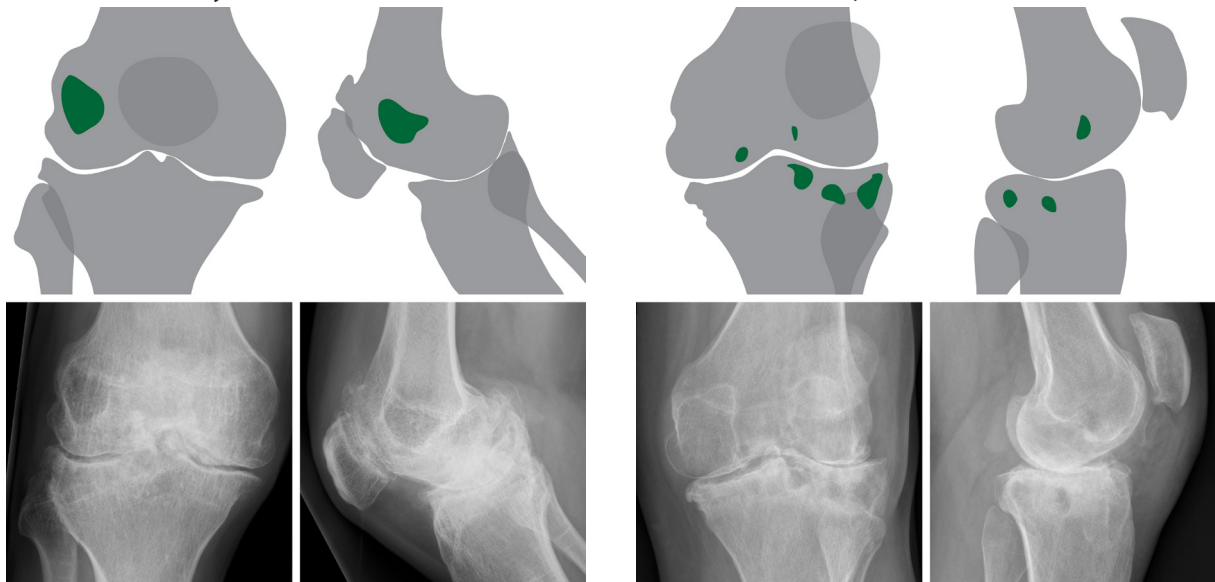
>1mm (subscore 2)



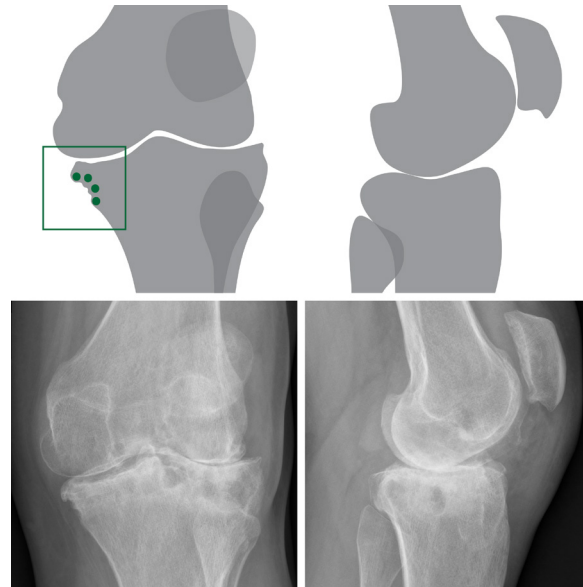
'Subchondral cyst formation' in the knee.

1 cyst (subscore 1)

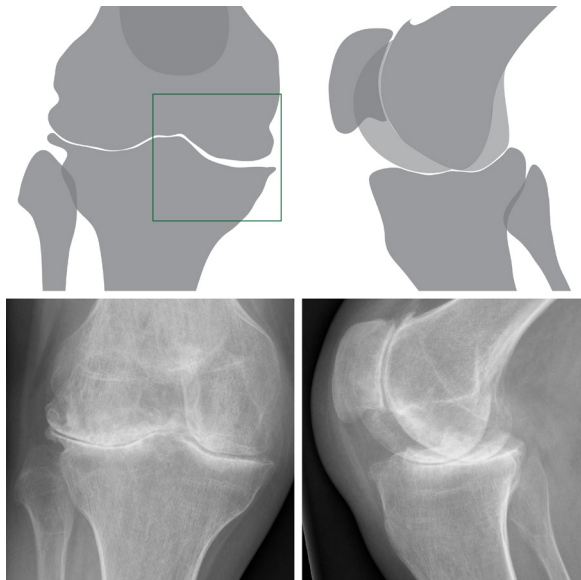
>1 cyst (subscore 2)



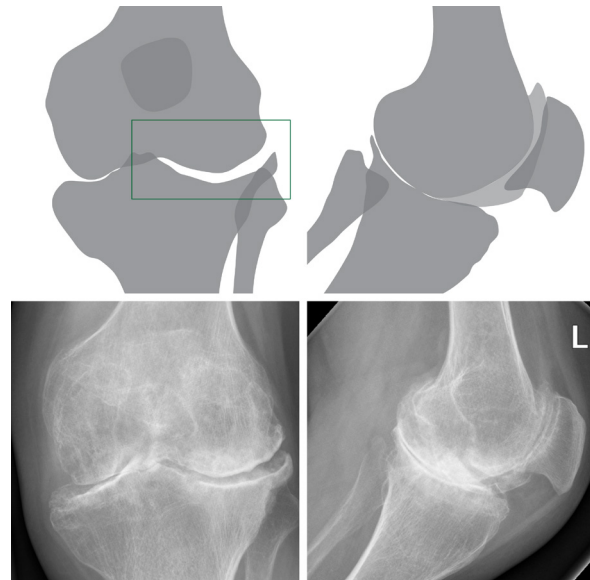
'Erosion at joint margins' of the knee.  
Present (subscore 1)



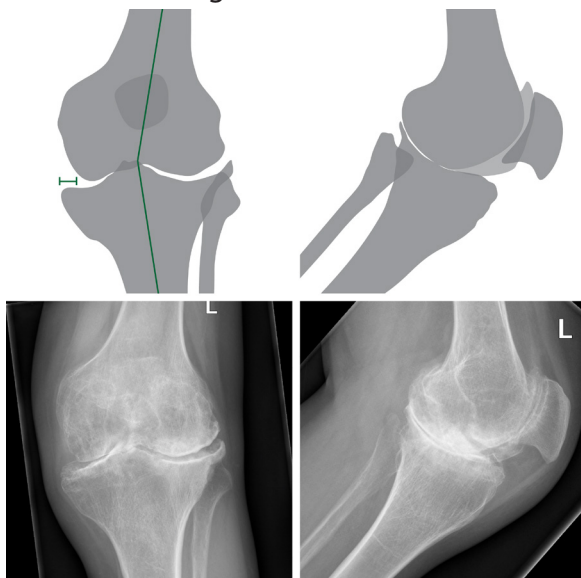
'Incongruence between joint surfaces' of the knee.  
Slight (subscore 1)



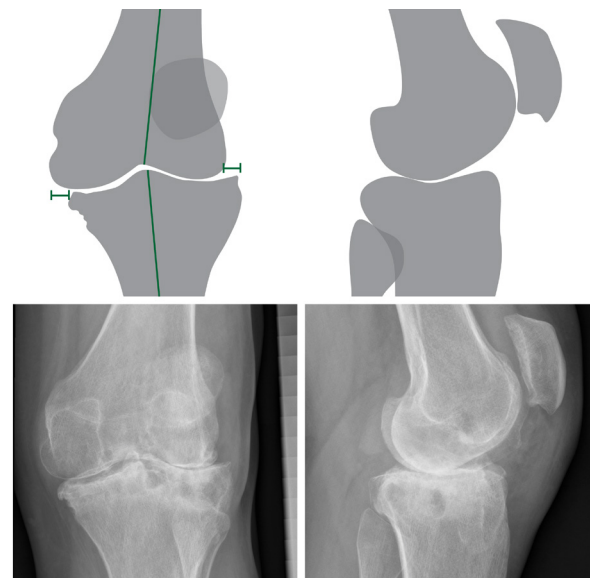
Pronounced (subscore 2)



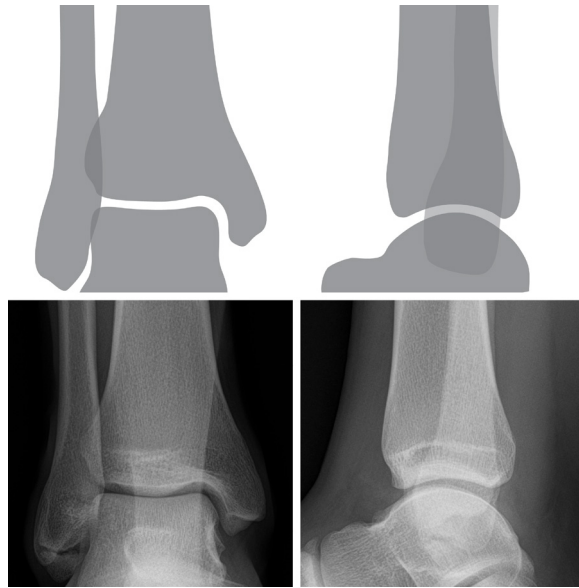
'Deformity (angulation and/or displacement) of articulating bones' of the knee.  
Slight (subscore 1)



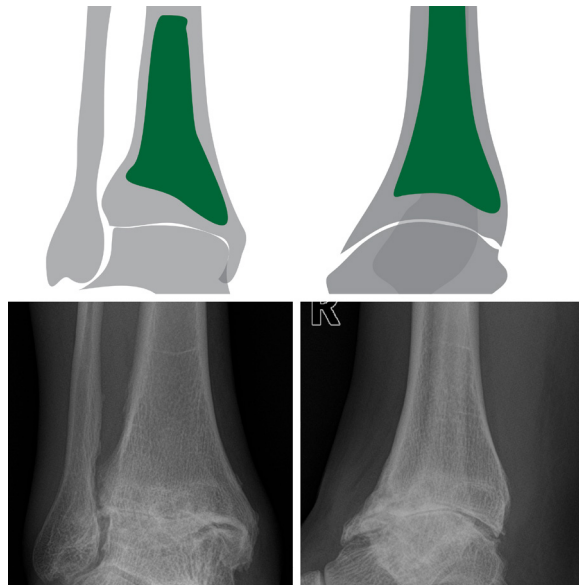
Pronounced (subscore 2)



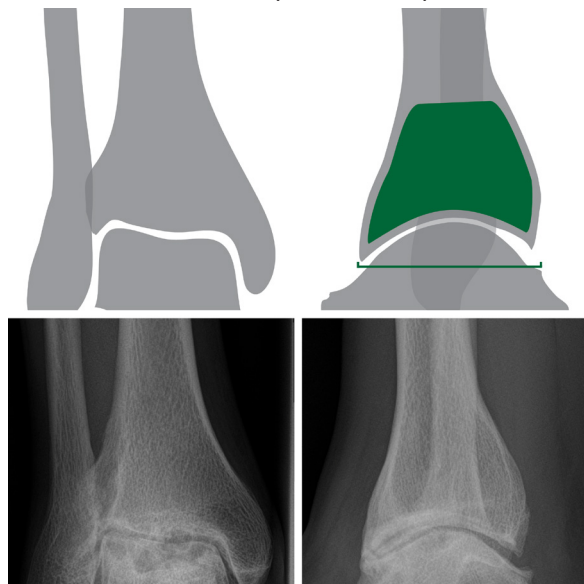
Normal antero-posterior and lateral X-rays of ankle.  
Score 0



'Osteoporosis' of the ankle.  
Present (subscore 1)

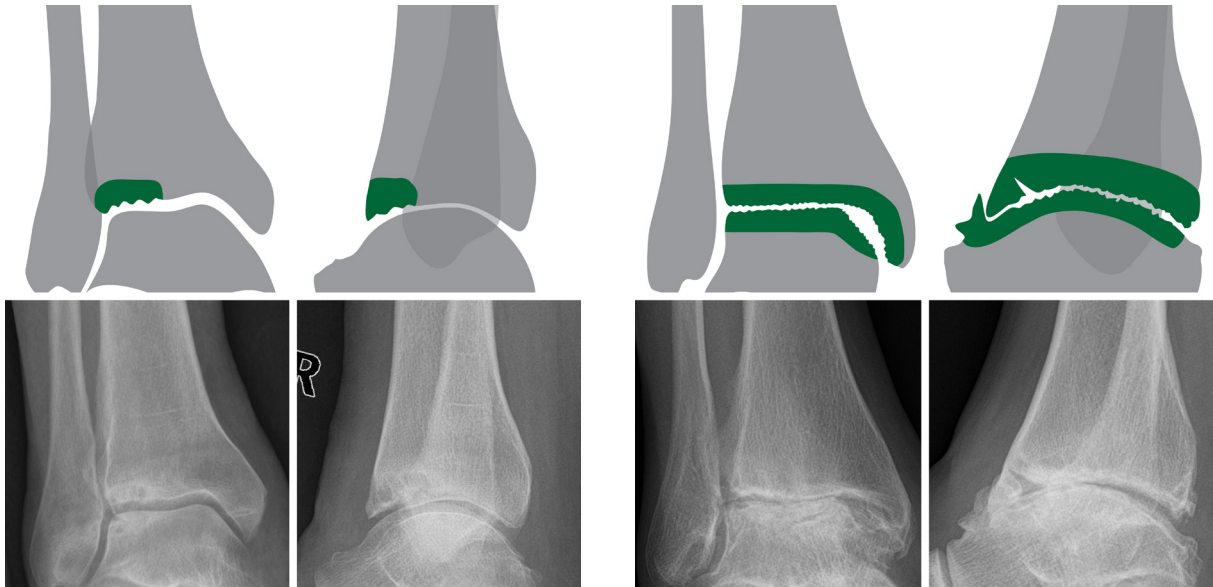


'Enlargement of epiphysis' of the ankle.  
Present (subscore 1)

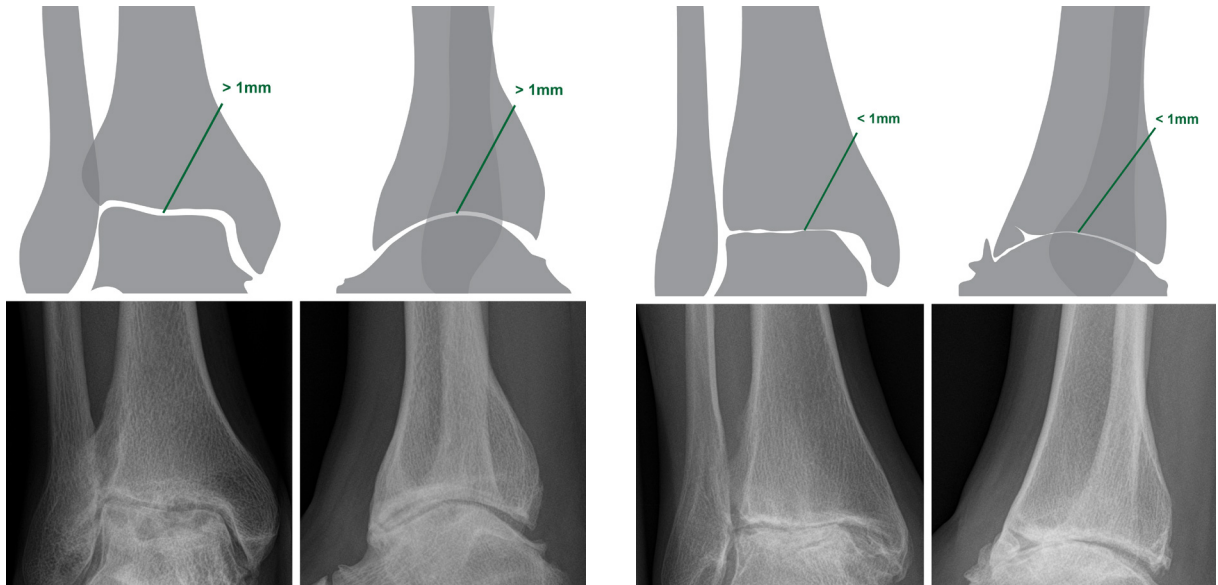




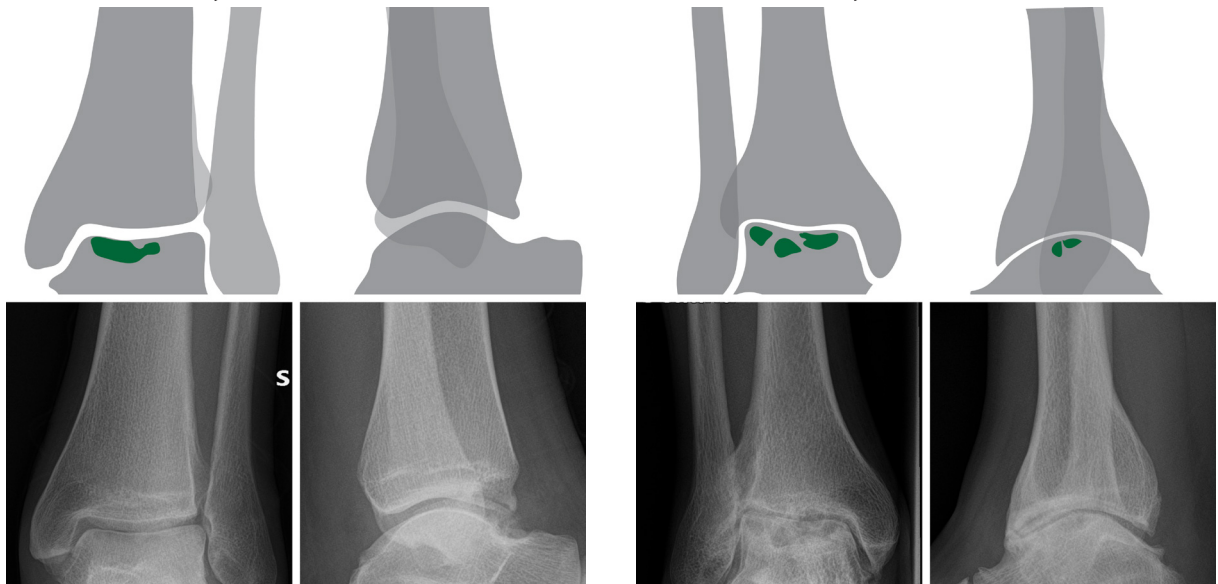
'Irregularity of subchondral surface' of the ankle.  
 Slight (subscore 1)                      Pronounced (subscore 2)



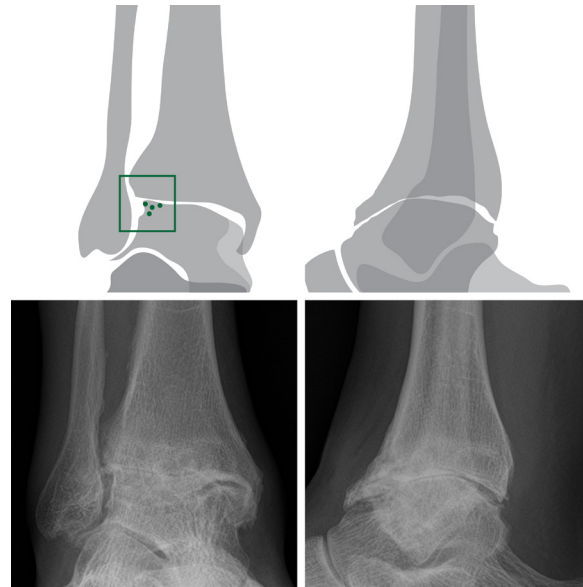
'Narrowing of joint space' of the ankle.  
 <1mm (subscore 1)                      >1mm (subscore 2)



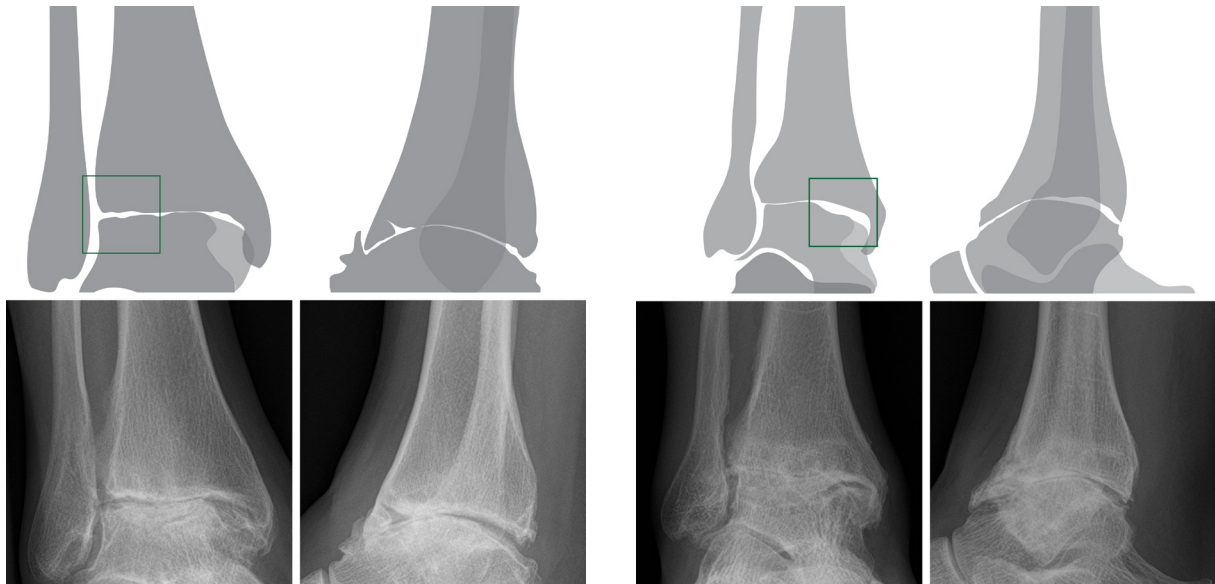
'Subchondral cyst formation' in the ankle.  
 1 cyst (subscore 1)                      >1 cyst (subscore 2)



'Erosion at joint margins' of the ankle.  
Present (subscore 1)



'Incongruence between joint surfaces' of the ankle.  
Slight (subscore 1)                      Pronounced (subscore 2)



'Deformity (angulation and/or displacement) of articulating bones' of the ankle.  
Slight (subscore 1)                      Pronounced (subscore 2)

