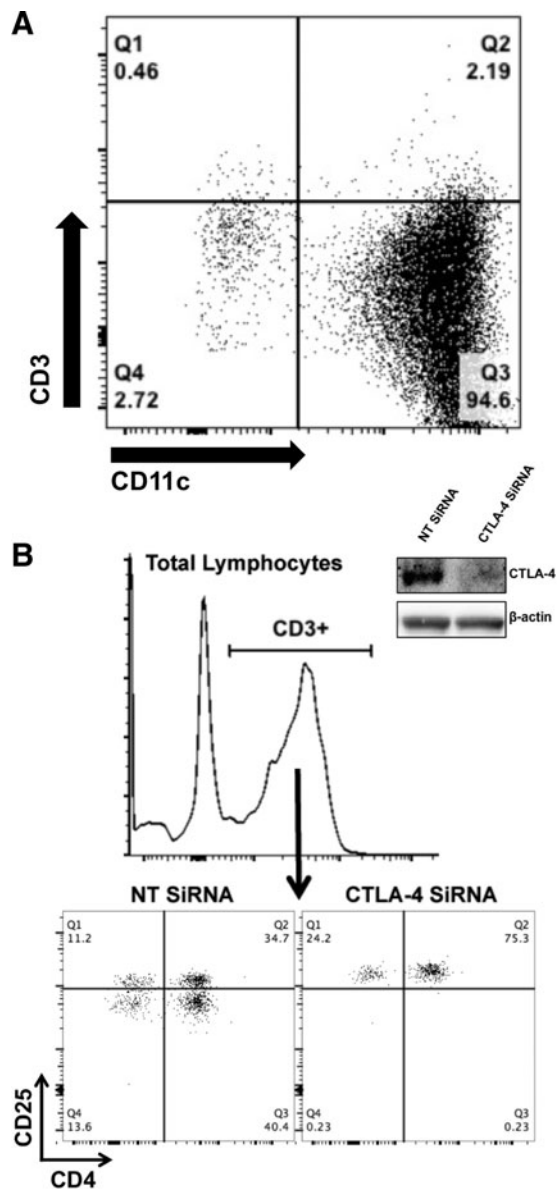


## Supplementary Data



**SUPPLEMENTARY FIG. S1.** (A) DC purity after CD14<sup>+</sup> selection, differentiation, and CD11c-enrichment. The CD14<sup>+</sup> monocytic fraction of the buffy coat was magnetically selected before DC differentiation and CD11c-enrichment was performed before subsequent use in experimentation. (B) Functional validation of CTLA-4 siRNA specificity. CTLA-4 or NT siRNA was electroporated into T cells 48 h before analysis. CTLA-4 knockdown was subsequently validated by western blot and upregulation of T cell CD25 expression. CTLA-4, cytotoxic T-lymphocyte-associated protein-4; DC, dendritic cells; NT, nontargeting.