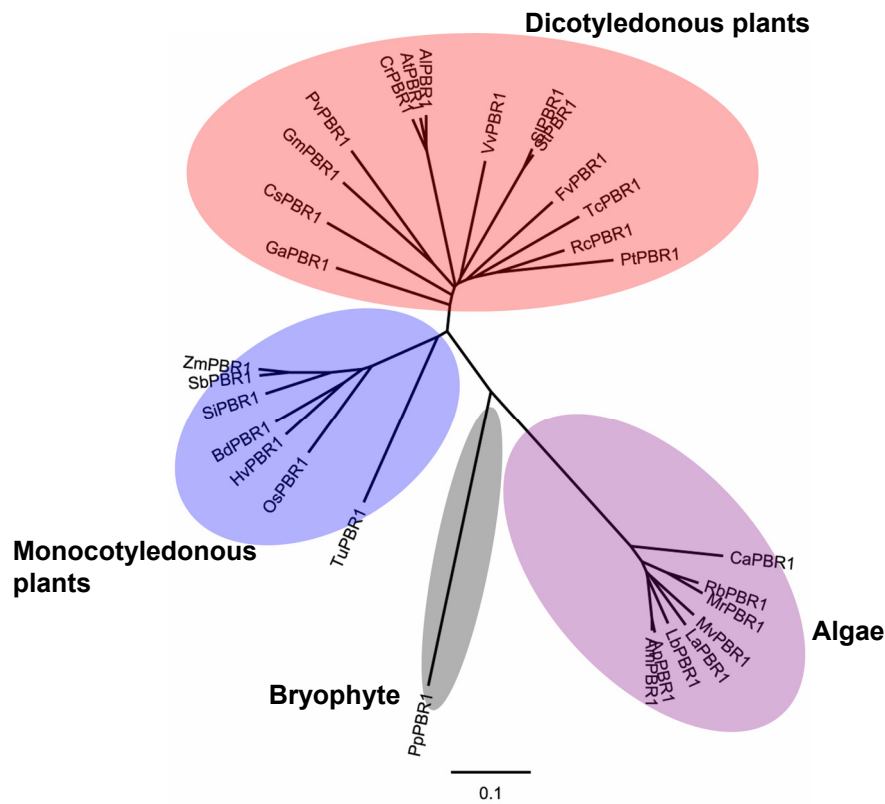


**Figure S3**



**Figure S3** Phylogenetic relationships of PBR1 homologs.

Neighbor-Joining phylogenetic tree of PBR1 homologs from 30 species, including algae, bryophyte, monocotyledonous and dicotyledonous plants was generated with MEGA 6. Bootstrap analysis was conducted with 1000 replicates. A radial tree was drawn with FigTree. The bar indicates substitutions per residue. *Al*, *Arabidopsis lyrata* (GenBank accession number:XP\_002887384); *Am*, *Arthrospira maxima* (WP\_006668626); *Ap*, *Arthrospira platensis* (YP\_005072908); *At*, *Arabidopsis thaliana* (AT1G71720); *Bd*, *Brachypodium distachyon* (XP\_003569284); *Ca*, *Cyanobacterium aponinum* (YP\_007162445); *Cr*, *Capsella rubella* (EOA34039); *Cs*, *Cucumis sativus* (XP\_004140950); *Fv*, *Fragaria vesca* (XP\_004290474); *Ga*, *Genlisea aurea* (EPS66517); *Gm*, *Glycine max* (XP\_003535559); *Hv*, *Hordeum vulgare* (BAJ92399); *La*, *Lyngbya aestuarii* (WP\_023067953); *Lb*, *Leptolyngbya boryana* (WP\_017290078); *Mr*, *Mastigocladopsis repens* (WP\_017316016); *Mv*, *Microcoleus vaginatus* (WP\_006635639); *Os*, *Oryza sativa* (NP\_001043440); *Pp*, *Physcomitrella patens* (XP\_001758864); *Pt*, *Populus trichocarpa* (XP\_002302157); *Pv*, *Phaseolus vulgaris* (ESW23949); *Rb*, *Raphidiopsis brookii* (WP\_009341336); *Rc*, *Ricinus communis* (XP\_002527086); *Sb*, *Sorghum bicolor* (XP\_002458071); *Si*, *Setaria italica* (XP\_004969038); *Sl*, *Solanum lycopersicum* (XP\_004253265); *St*, *Solanum tuberosum* (XP\_006359028); *Tc*, *Theobroma cacao* (EOY16872); *Tu*, *Triticum urartu* (EMS62964); *Vv*, *Vitis vinifera* (XP\_002263508); *Zm*, *Zea mays* (DAA58739).