

Figure S5

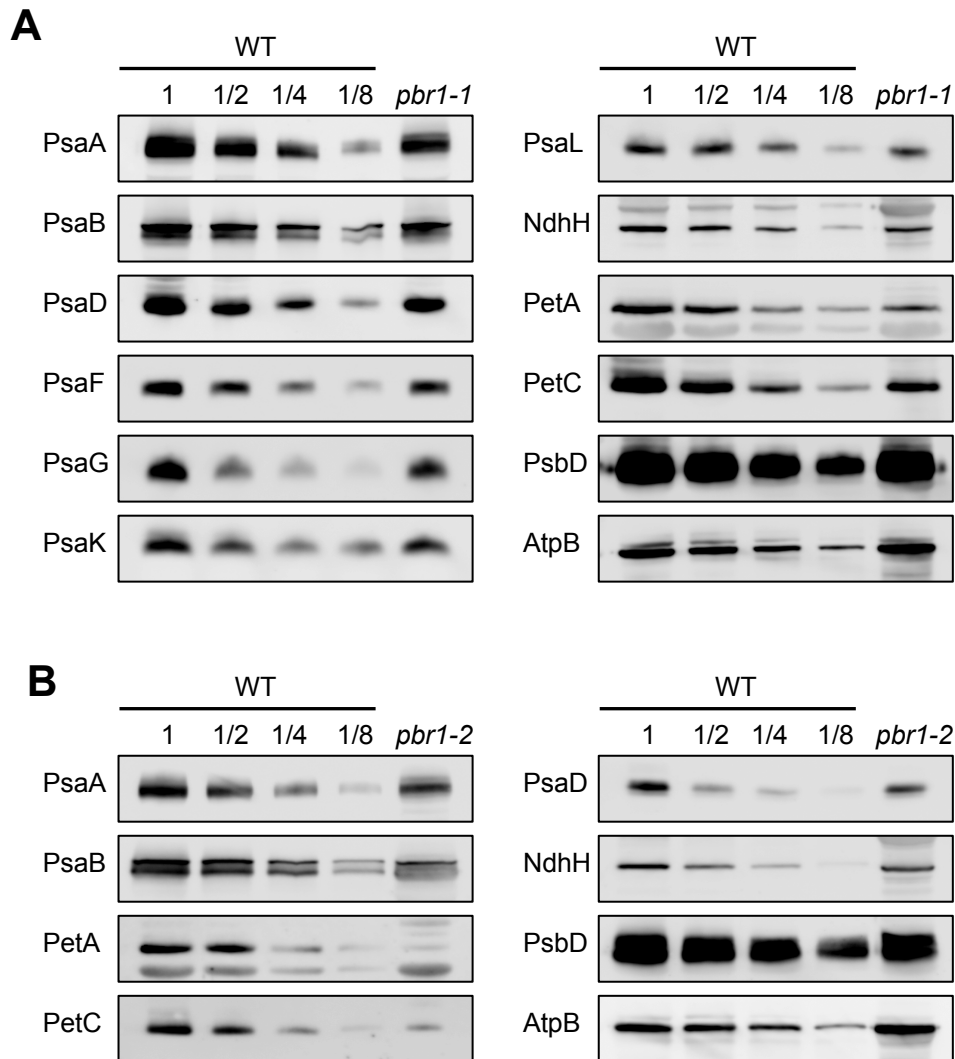


Figure S5 *PBR1* knockdown leads to reduction in abundance of NDH, PSI and *Cytb6f* complexes. (A,B) Comparative analysis of abundance of thylakoid complex proteins between *the pbr1-1* mutant and wild-type (A) or between *the pbr1-2* mutant and wild-type (B) by immunodetection with a wild-type dilution series (1/2, 1/4 and 1/8). Thylakoid membrane proteins were fractionated by SDS-PAGE and the resulting blots were probed with antibodies against the indicated proteins, respectively.