

Figure S7

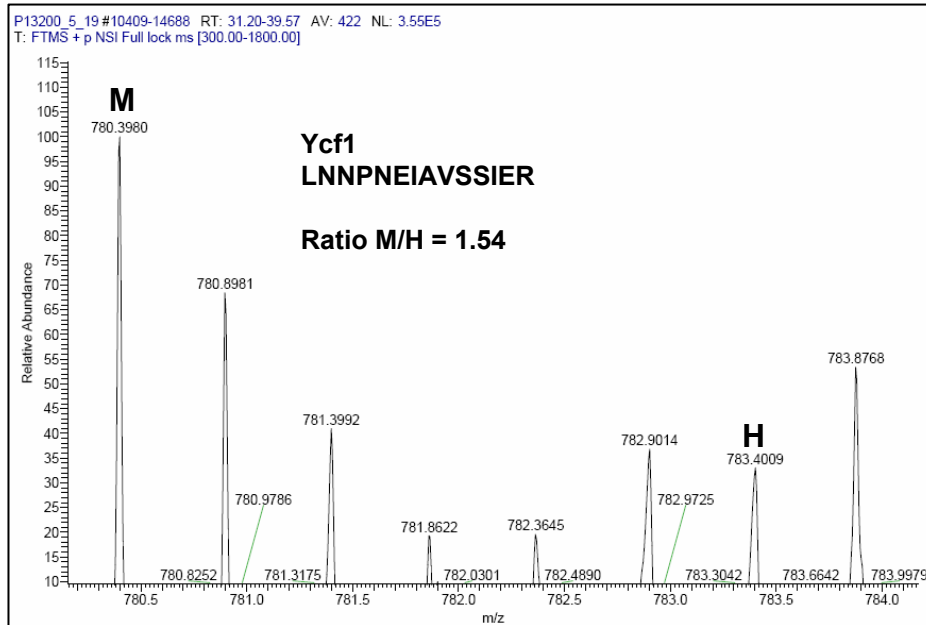


Figure S7 Overexpression of *PBR1* enhances the Ycf1 translation. The representative mass spectra for identification of Ycf1 protein in samples extracted from the wild-type and *PBR1*-overexpression line (OE5) leaves pulse-labeled with “heavy” (H) and “medium heavy” (M) stable isotope amino acids, respectively. The ratio of peak intensities of M versus H peptides reflects difference between the overexpression line OE5 and wild-type in translation of the corresponding proteins since the newly synthesized proteins incorporate either the M or H amino acids.