

SUPPLEMENTARY FIGURES

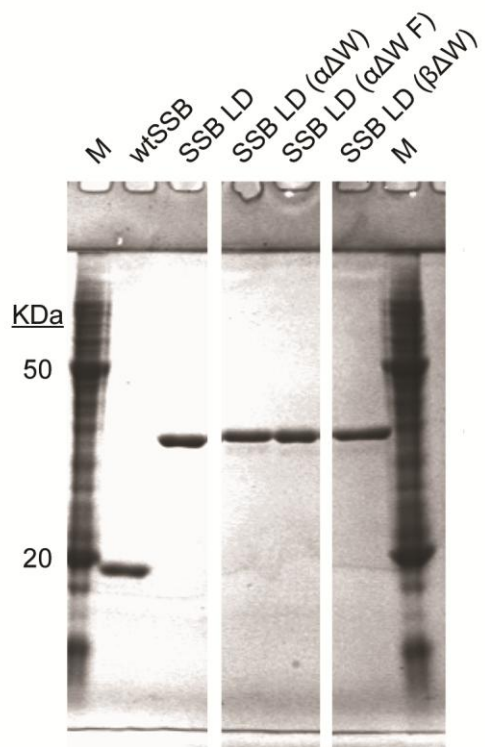


Figure S1: SDS-PAGE analysis of purified wtSSB, SSB LD, SSB LD ($\alpha\Delta W$), SSB LD ($\alpha\Delta W$ F) and SSB LD ($\beta\Delta W$). We analyzed 12 μ l of 1.5 μ M protein stocks on a 12% SDS-PAGE gel.

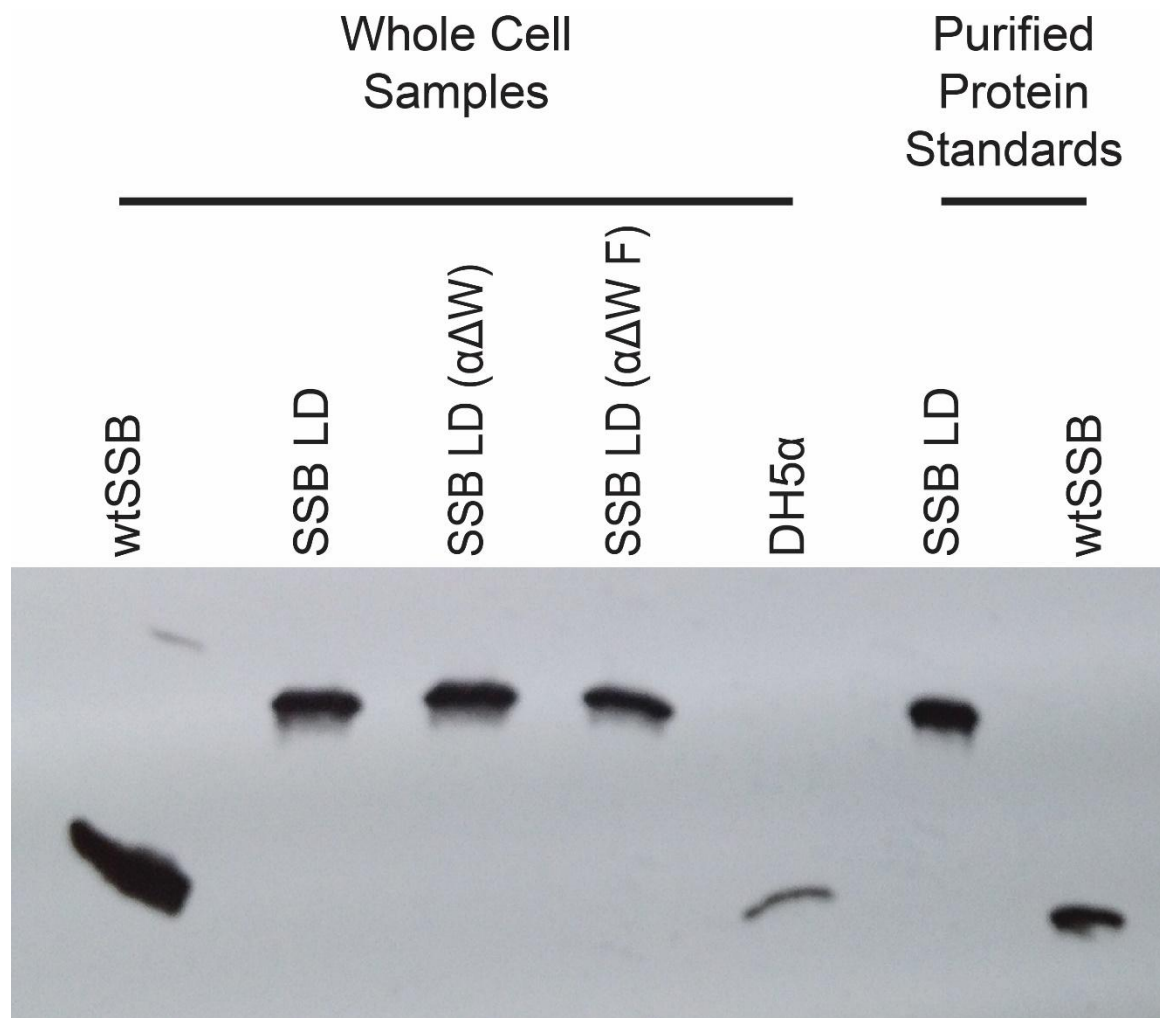


Figure S2: Anti-SSB western blot analysis. (*Left four lanes*) Whole cell extracts of RDP317 cells that have been cured of the helper plasmid expressing wtSSB that express the SSB variants listed from the secondary plasmid. (*Fifth lane*) Whole cell extract of the DH5α strain was used as a standard for genomic expression of wtSSB. (*Right two lanes*) Purified SSB LD and wtSSB were used as molecular weight standards.