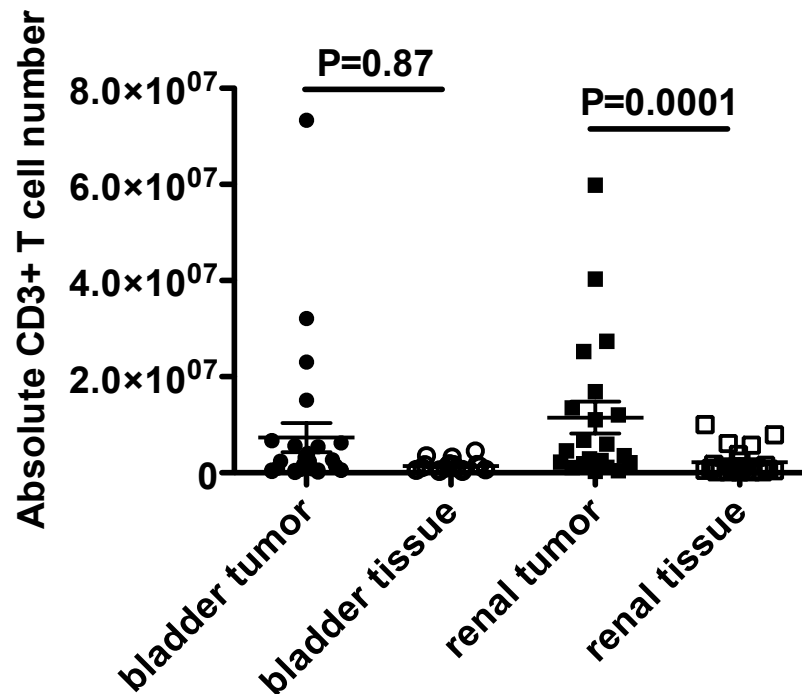
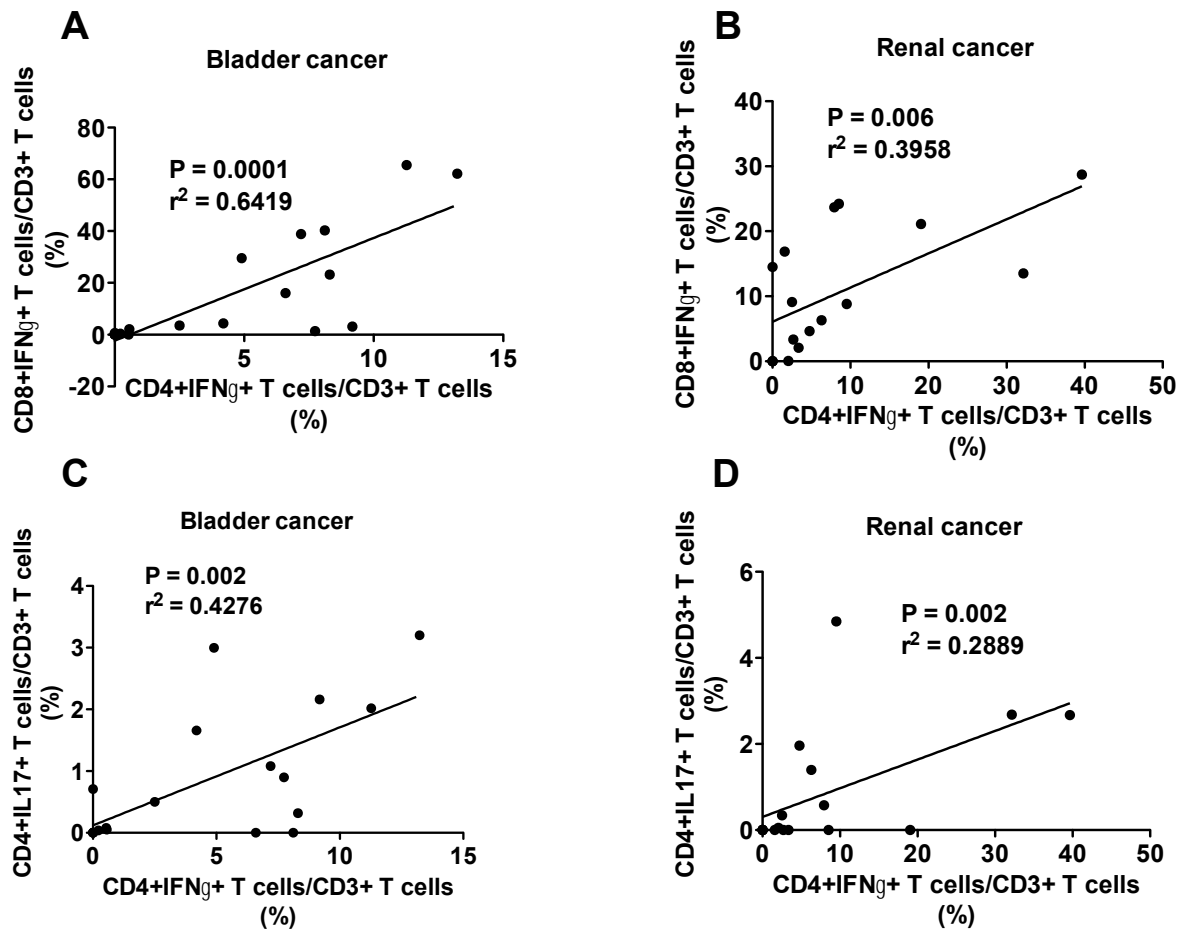


Residual tumor micro-foci and overwhelming regulatory T lymphocyte infiltration are the causes of bladder cancer recurrence

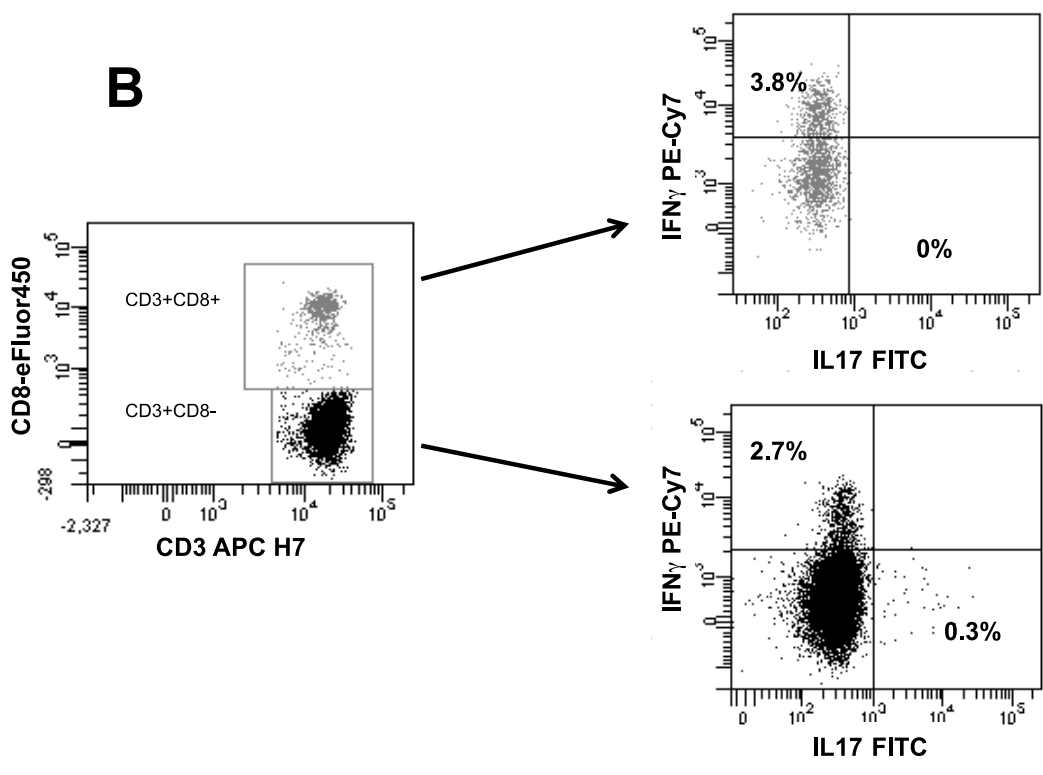
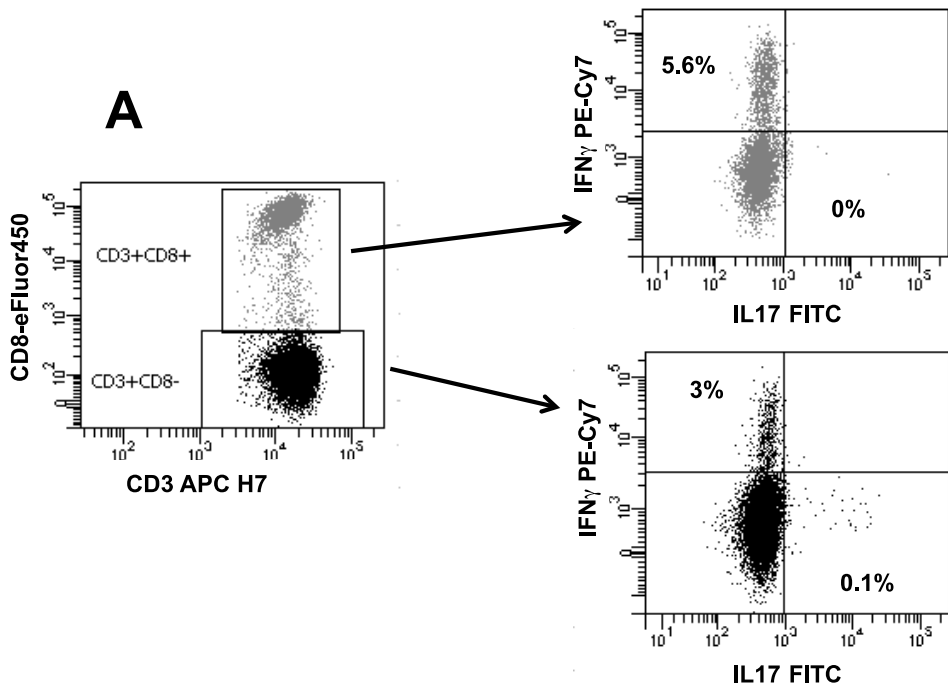
Supplementary Material

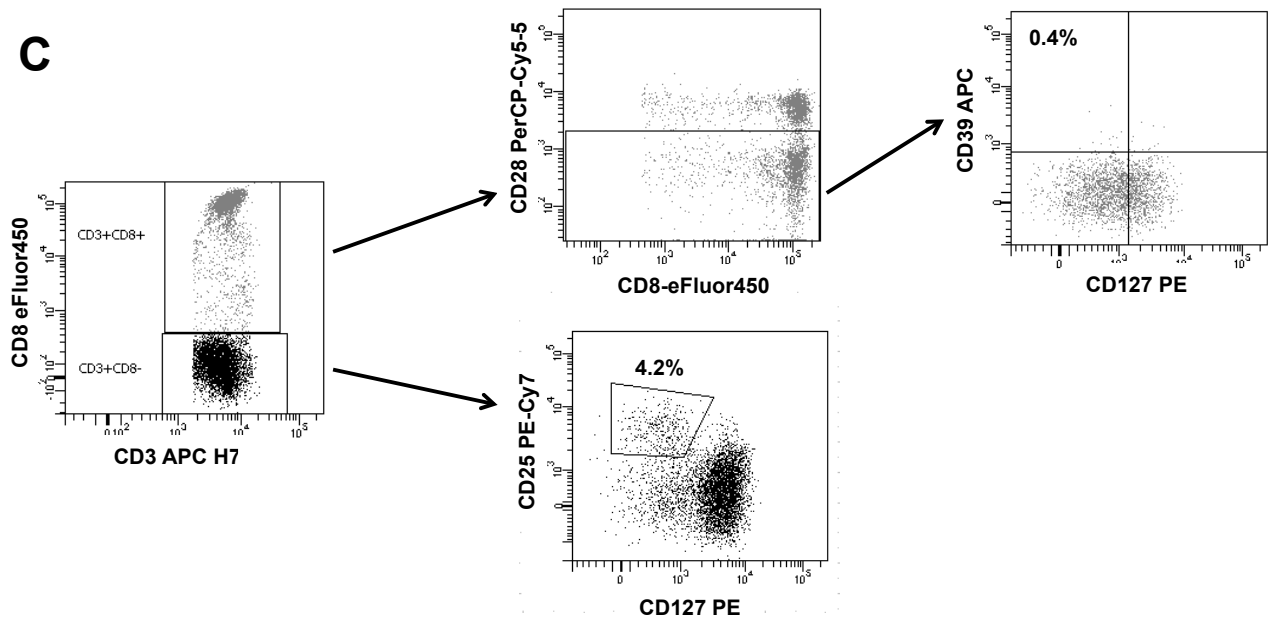
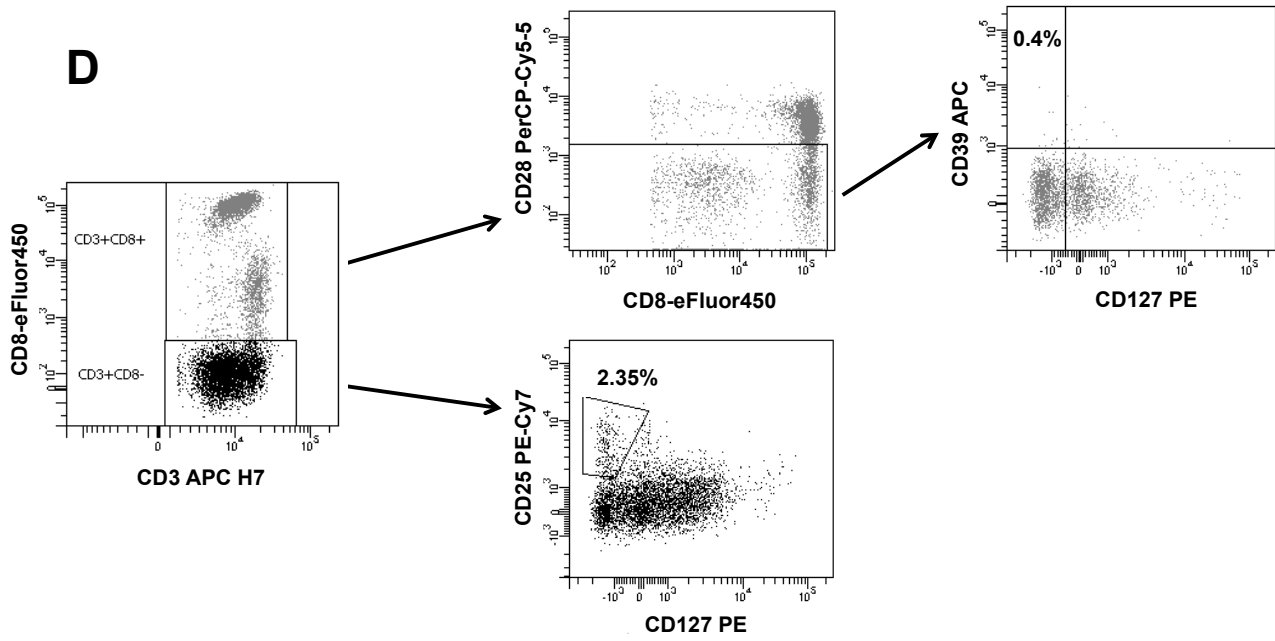


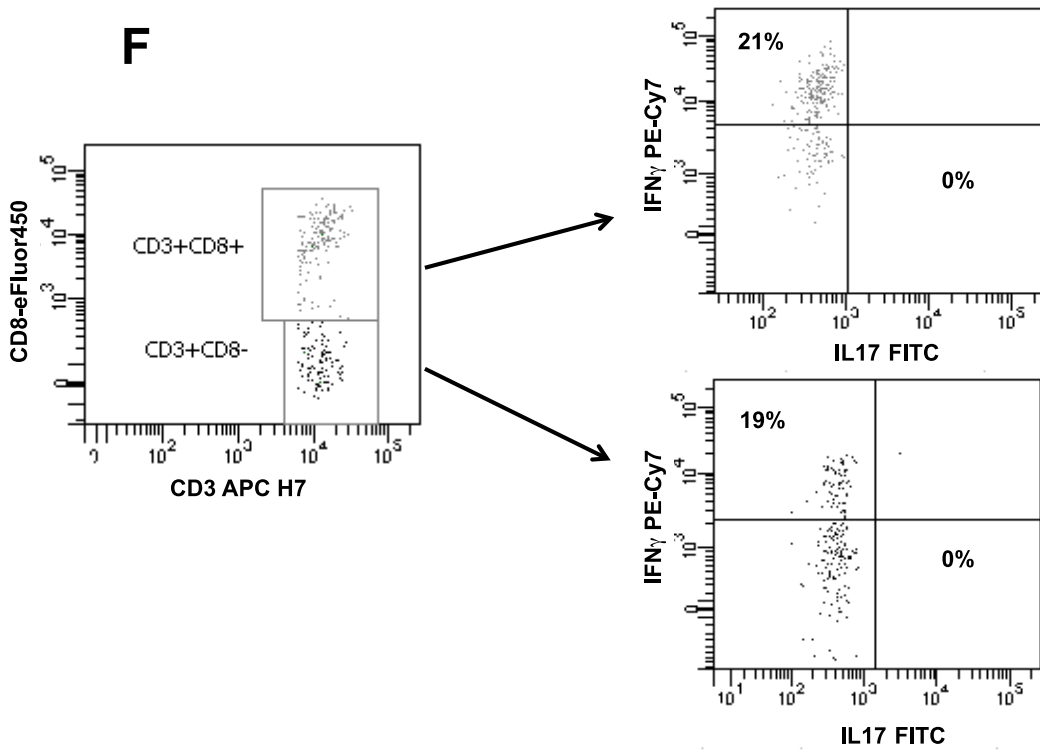
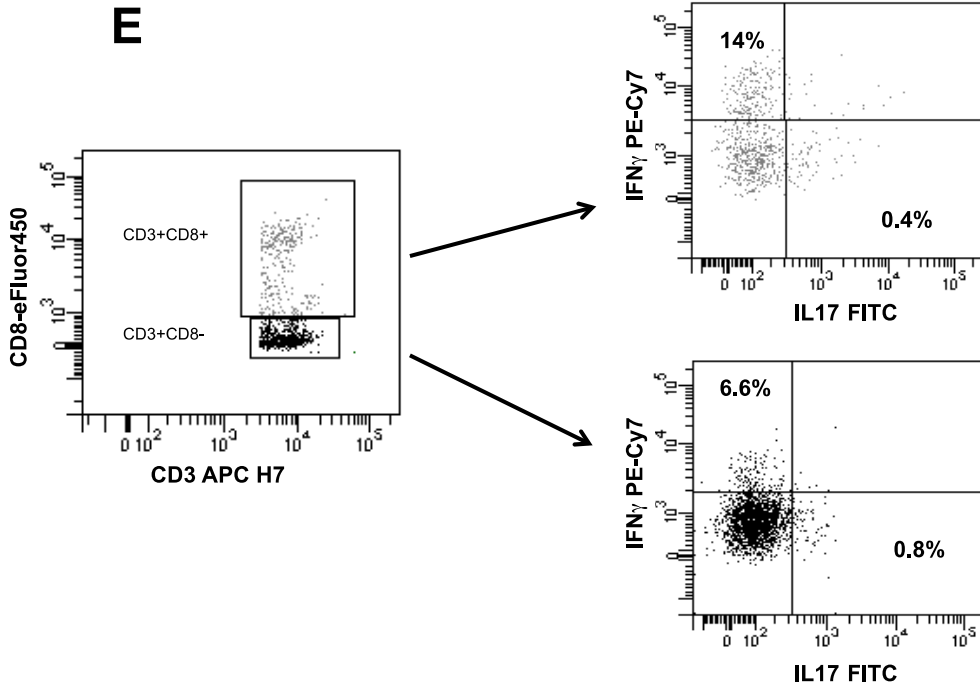
Supplementary Figure 1. Absolute CD3+ T cell counts. The absolute numbers of CD3+ T lymphocytes were normalized for the weight of tissue specimens. Circles: Bladder specimens; squares: renal specimens; black symbols: tumor specimens; open symbols: apparently free-of-tumor bladder or renal tissue.

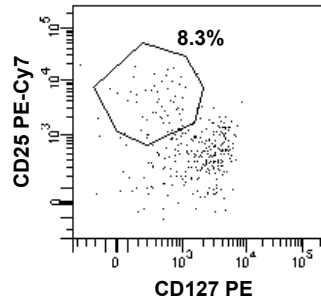
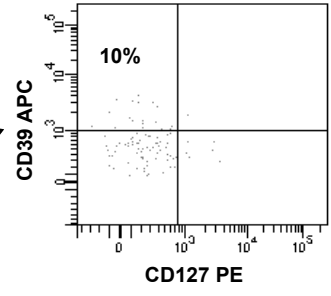
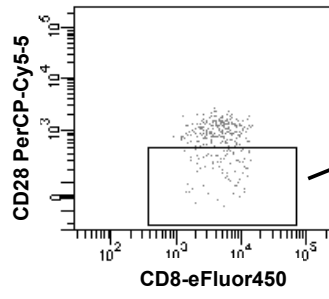
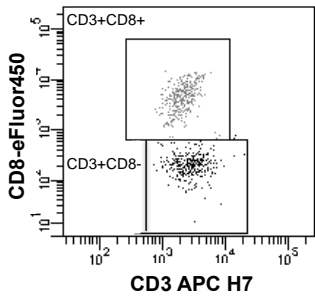
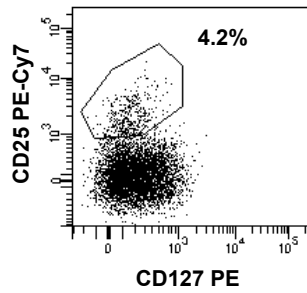
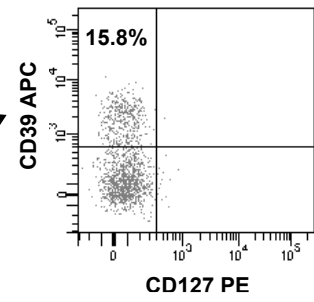
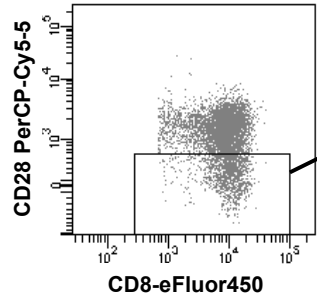
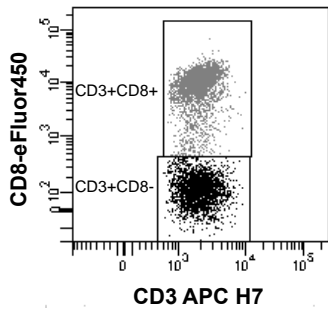


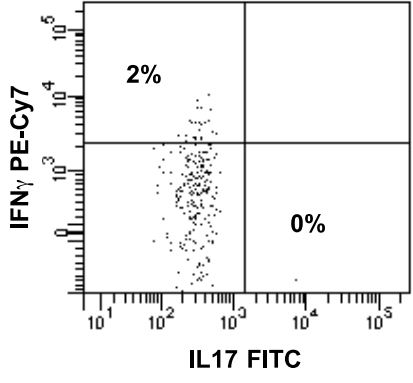
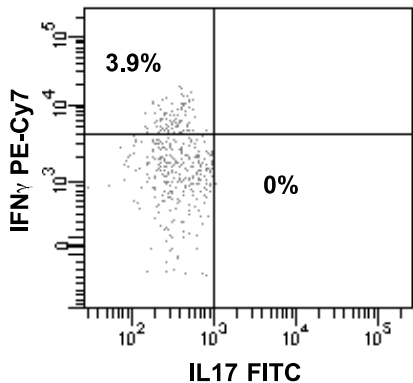
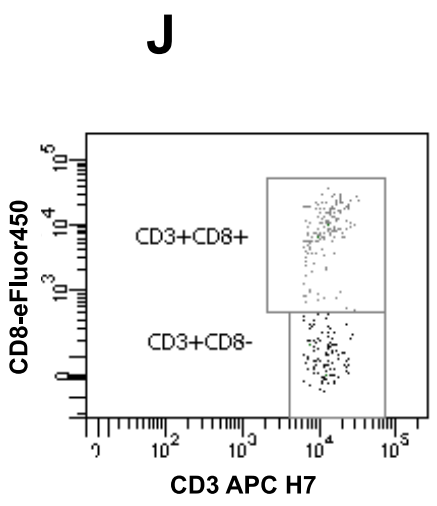
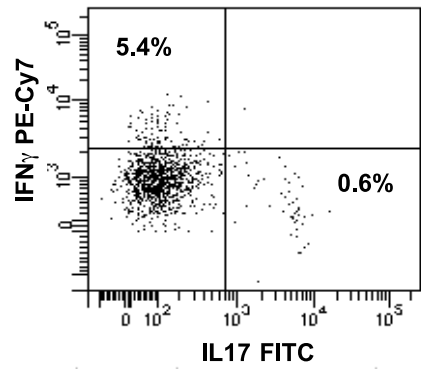
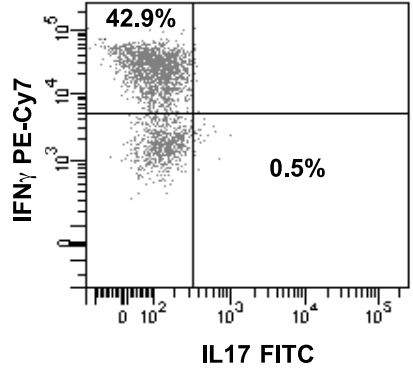
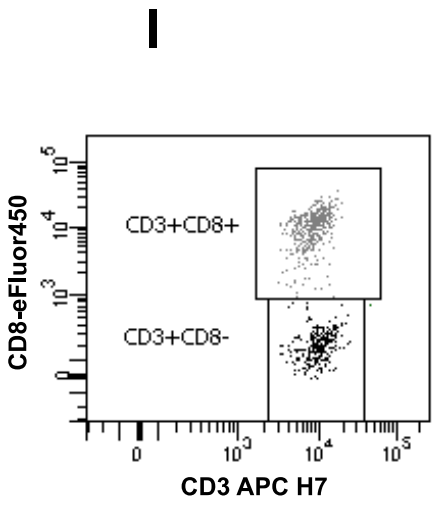
Supplementary Figure 2. Analyses of correlation among frequencies of intratumoral effector T cell subsets. Panels A and C refer to analyses performed on cells from bladder cancer patients; panels B and D refer to analyses performed on cells from renal cancer patients.

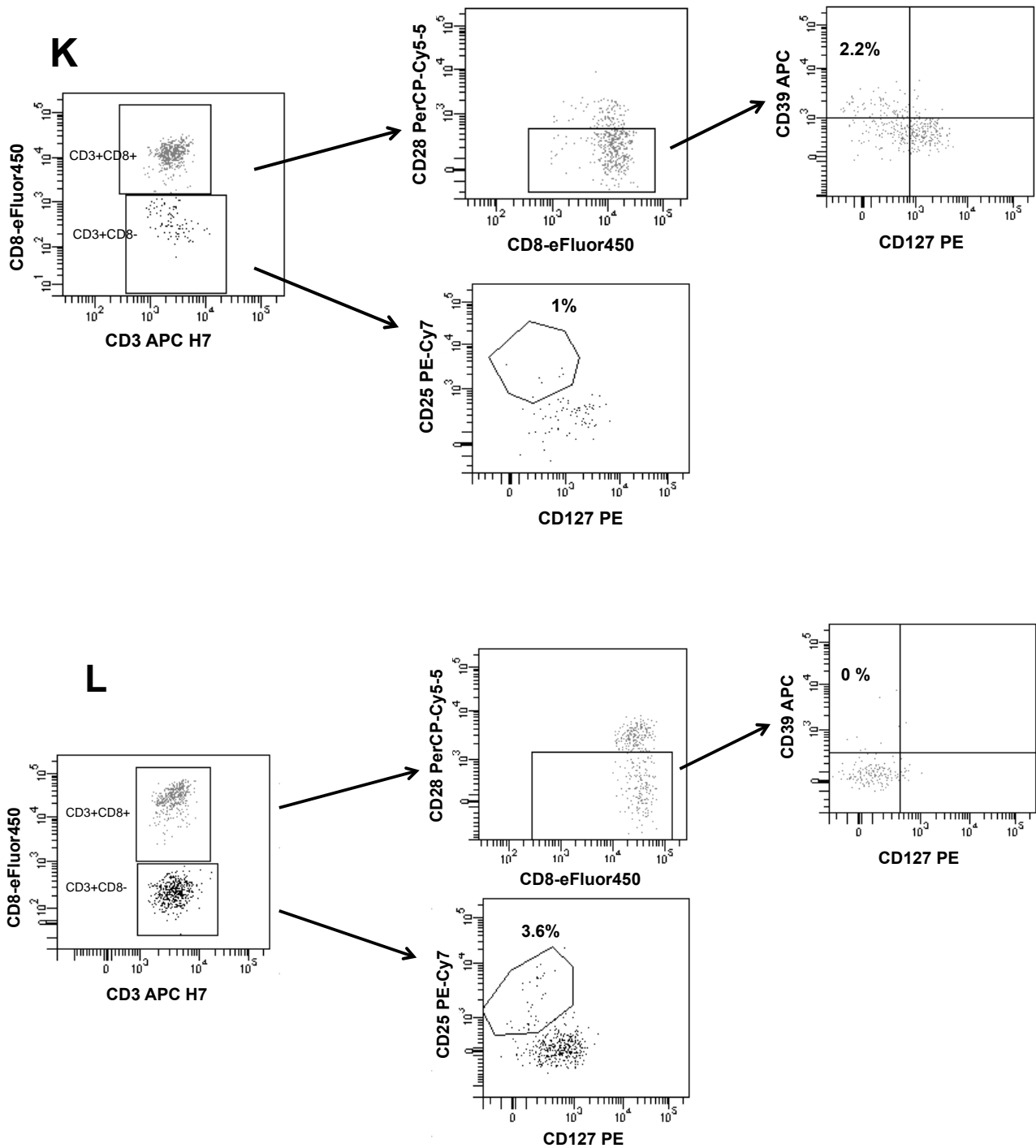


C**D**



G**H**





Supplementary Figure 3. Gating strategy for phenotypic analyses. A, C, E, G, I, K: representative analyses performed on T cells from bladder cancer patients; B, D, F, H, J, L: representative analyses performed on T cells from renal cancer patients; A, B, C, D: analyses performed on PBMC; E, F, G, H: analyses performed on tumor infiltrating T cells; I, J, K, L: analyses performed on T cells from apparently free-of-tumor bladder or renal tissues; A and B: analyses performed on effector T cells from PBMC of the bladder cancer patient #24 and the renal cancer patient #45, respectively; C and

D: analyses performed on Treg lymphocytes from PBMC of the bladder cancer patient #19 and the renal cancer patient #23, respectively; E and F: analyses performed on tumor infiltrating effector T cells from the bladder cancer patient #9 and the renal cancer patient #44, respectively; G and H: analyses performed on tumor infiltrating Treg lymphocytes from the bladder cancer patient #13 and the renal cancer patient #39, respectively; I and J: analyses performed on effector T cells from the apparently free-of-tumor bladder (I) or renal (J) tissues of the bladder cancer patient #9 and the renal cancer patient #44, respectively; K and L: analyses performed on Treg lymphocytes from the apparently free-of-tumor bladder (K) or renal (L) tissues of the bladder cancer patient #13 and the renal cancer patient #39, respectively.