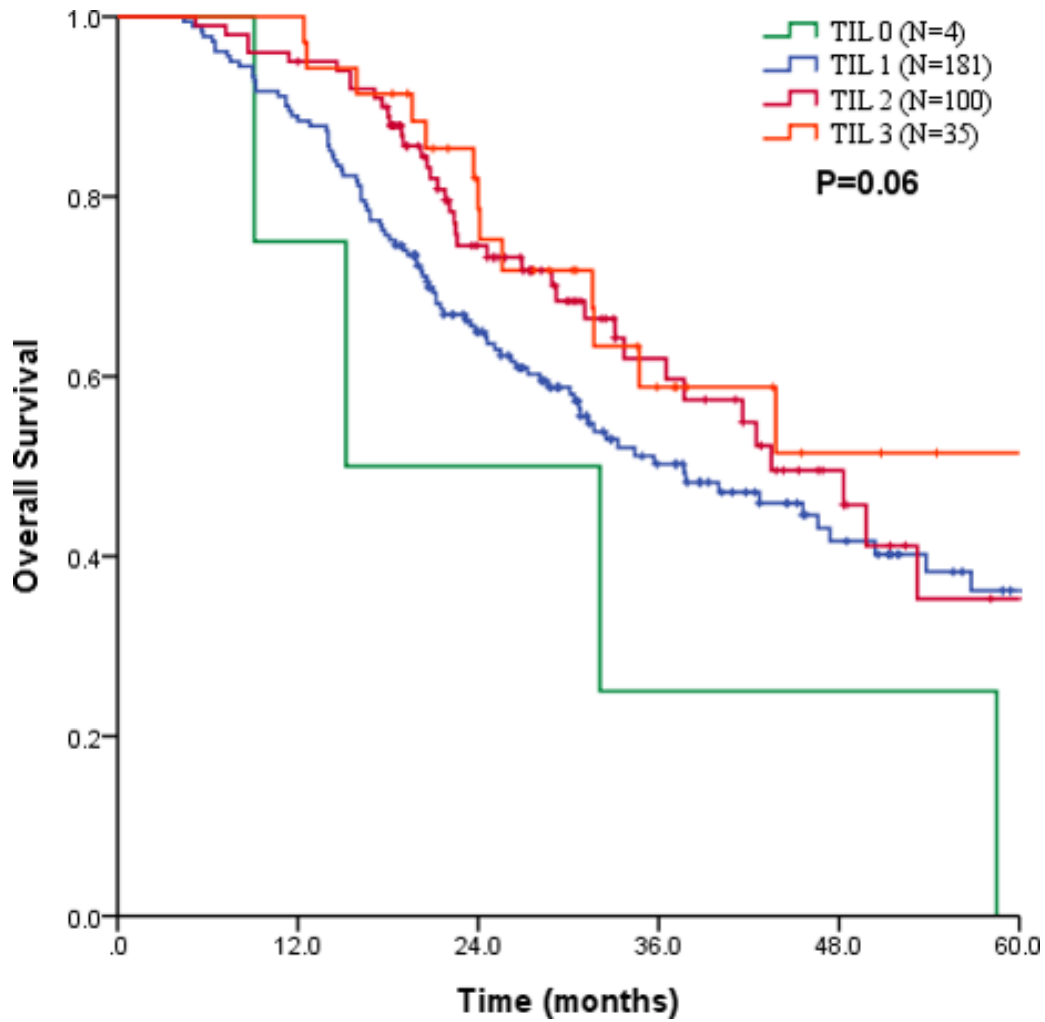


Prognostic value of tumor-infiltrating lymphocytes for patients with completely resected stage IIIA(N2) non-small cell lung cancer

Supplementary Materials



Supplementary Figure S1: Plot of the overall survival for all patients stratified into the four-scale TIL groups.

Supplementary Table S1: Correction of the TIL density level with the clinicopathological characteristics of patients with SCC tumors

Characteristics	TILs level
	<i>P</i> value
Gender, male/female	0.06
Age, $\leq 60 / > 60$ years	0.15
Smoking history, Never or light smoker/current or heavy smoker	0.47
Tumor differentiation, well or Intermediate/poor	0.81
Angiolymphatic invasion, ALI-/ALI+	0.69
Numbers of lymph node resected, $\leq 20 / > 20$	0.2
Numbers of lymph node involved, $\leq 4 / > 4$	0.26
Pathologic T stage, T1/T2/T3	0.18