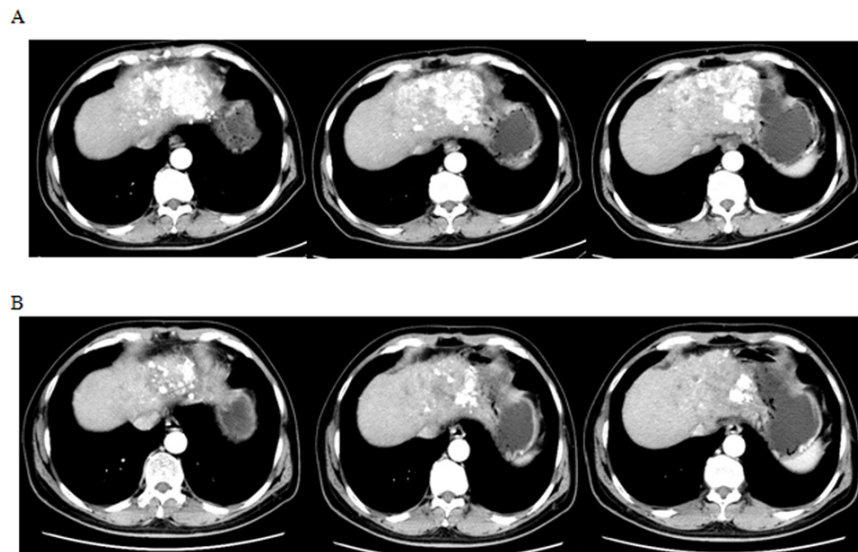
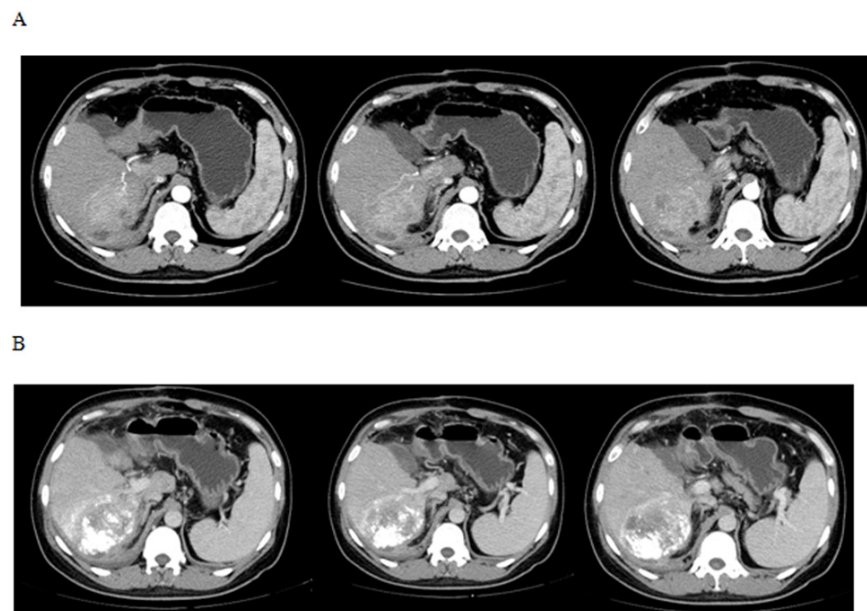


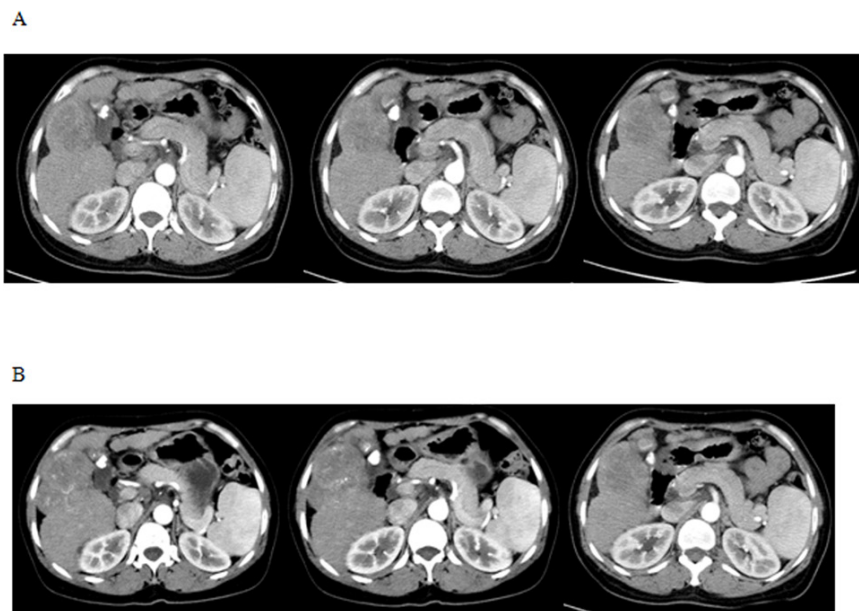
SUPPLEMENTARY FIGURES



Supplementary Figure S1: A 56-year old BCLC stage C male HCC patient **A**. One month after TACE, the enhanced CT (arterial phase) showed a good lipiodol deposition pattern; **B**. Two months after TACE, the enhanced CT (arterial phase) showed a significant decrease in lipiodol deposition.



Supplementary Figure S2: A 45-year old stage B male HCC patient **A**. Two weeks before TACE treatment, the enhanced CT (arterial phase) showed significant lesions in the right lobe of the liver and good blood supply; **B**. Four days after TACE, the enhanced CT (portal phase) showed poor lipiodol deposition.



Supplementary Figure S3: A 50-year old stage C female HCC patient **A.** Three days before TACE, the enhanced CT (arterial phase) showed that the enhancement in the right lobe lesion was not obvious, and the blood supply was not abundant; **B.** One month after TACE, the enhanced CT (arterial phase) showed poor lipiodol deposition in the lesion.