

SUPPLEMENTARY DATA

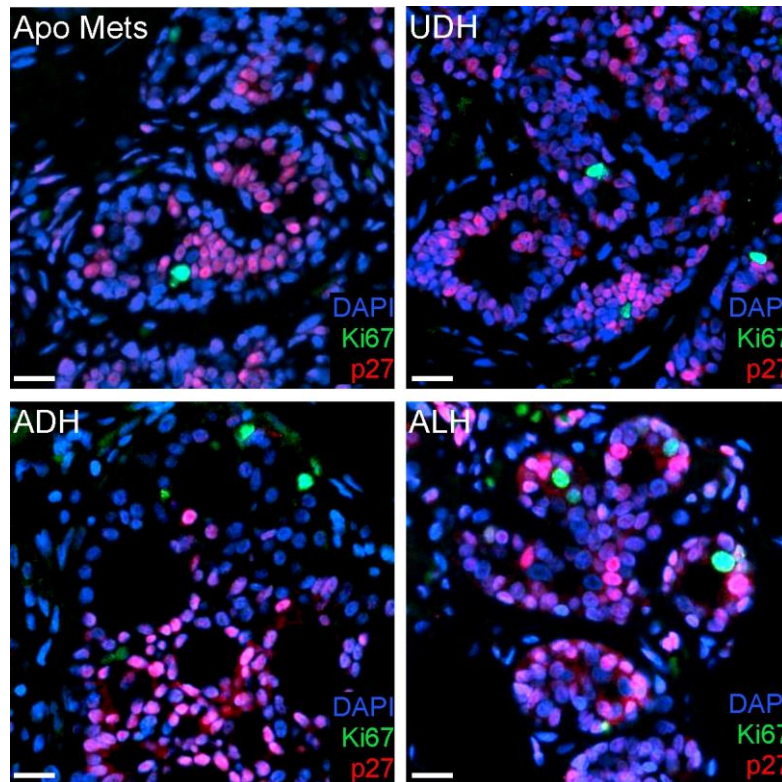


Figure S1. Image analysis of benign breast lesions. Related to Figure 1. Representative double-immunofluorescence staining for p27 (red) and Ki67 (green) of benign breast lesions: apocrine metaplasia (Apo Mets), usual ductal hyperplasia (UDH), atypical ductal hyperplasia (ADH), and atypical lobular hyperplasia (ALH). Nuclei are visualized by DAPI (blue) stain. Scale bar: 10 μ m.

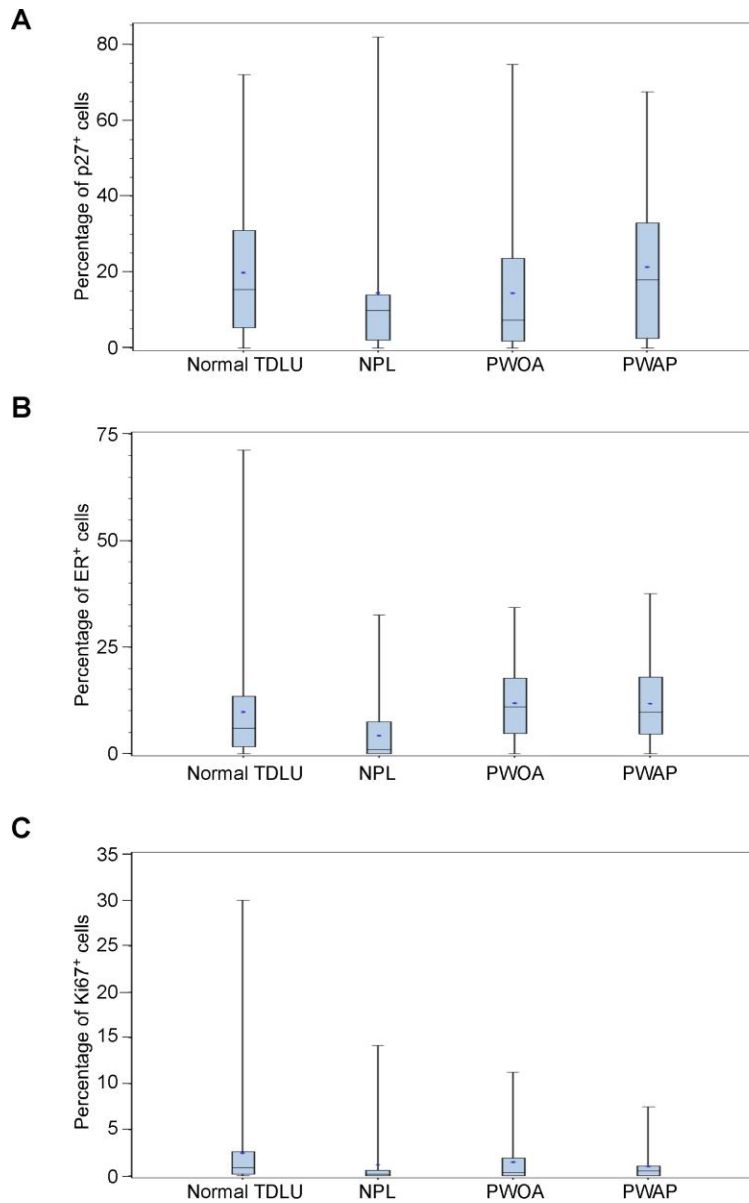


Figure S2. Boxplots of the percentage of p27⁺, ER⁺, and Ki67⁺ cells in benign breast lesions. Related to Figure S1 and Table S2, S3 and S4. The percentage of p27⁺ (A), ER⁺ (B) and Ki67⁺ (C) cells in benign breast lesions. Length of the boxes indicates the distance between the 25 and 75 percentiles whereas the line within the boxes indicates the median. Blue dot within the boxes represents the mean. The vertical lines from the boxes extend to the minimum and maximum values. Abbreviations- TDLU: terminal duct lobular unit, NPL: non-proliferative lesion (apocrine metaplasia, non-apocrine cyst), PWOA: proliferative without atypia (usual ductal hyperplasia), PWAP: proliferative with atypical hyperplasia (atypical ductal or lobular hyperplasia).