

Supporting Information

Gelatin Microgel Incorporated Poly(Ethylene Glycol)-based Bioadhesive with Enhanced Adhesive Property and Bioactivity

AUTHOR INFORMATION

*Yuting Li, Hao Meng, Yuan Liu, Ameya Narkar and Bruce P. Lee**

Department of Biomedical Engineering, Michigan Technological University,
Houghton, Michigan, 49931, United States

*** Corresponding author information:**

Bruce P. Lee, PhD

Email: bplee@mtu.edu

Phone: (906) 487-3262

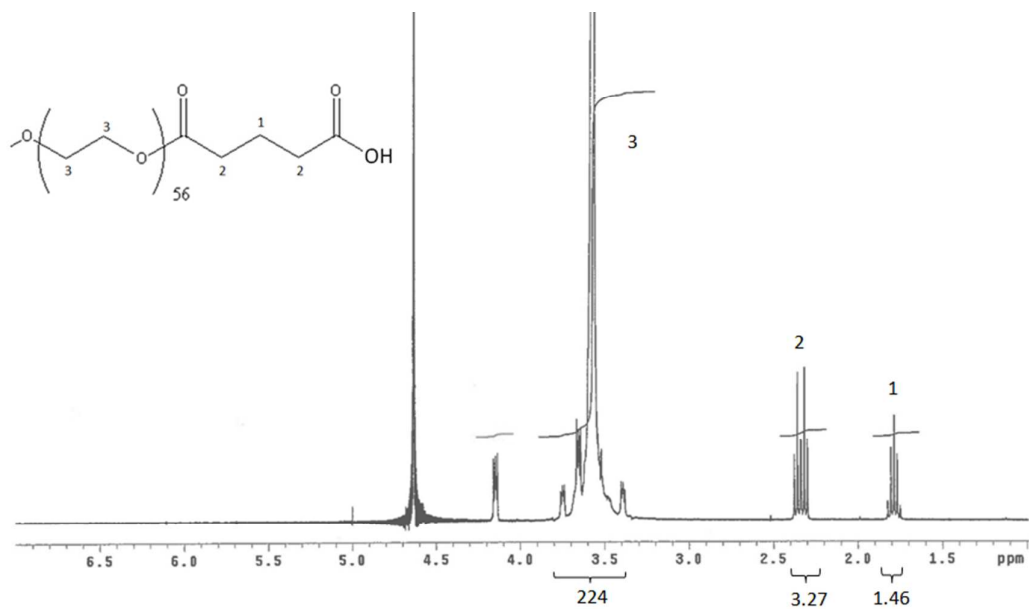


Figure S1. NMR spectrum of PEGGlu.

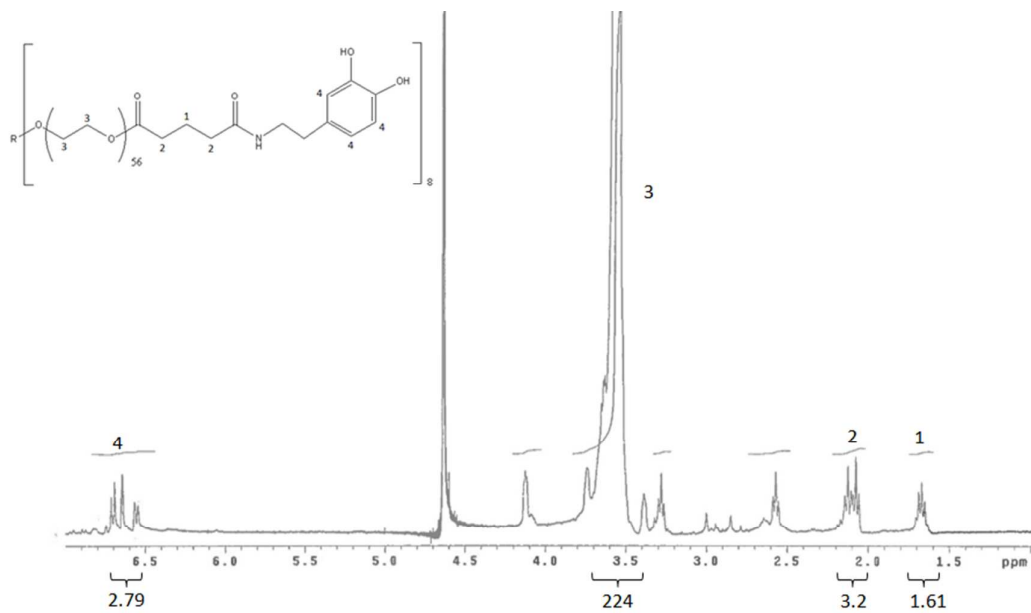


Figure S2. NMR spectrum of PEGDM.

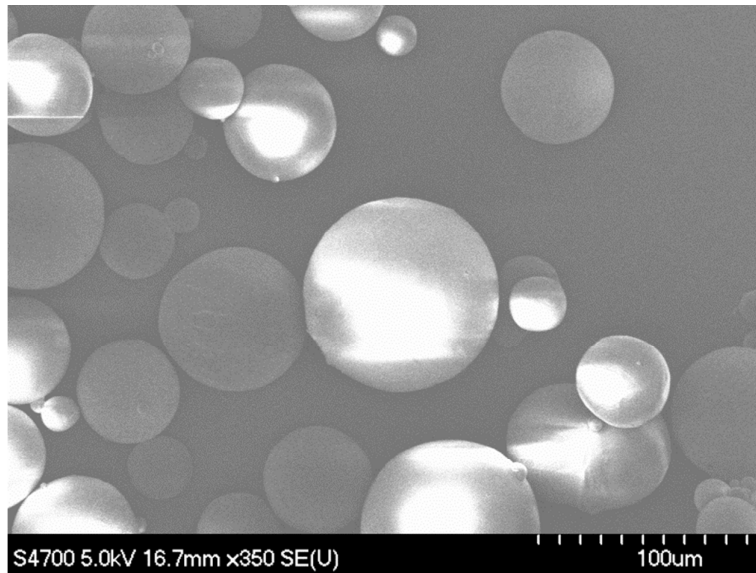


Figure S3. SEM image of gelatin microgel.

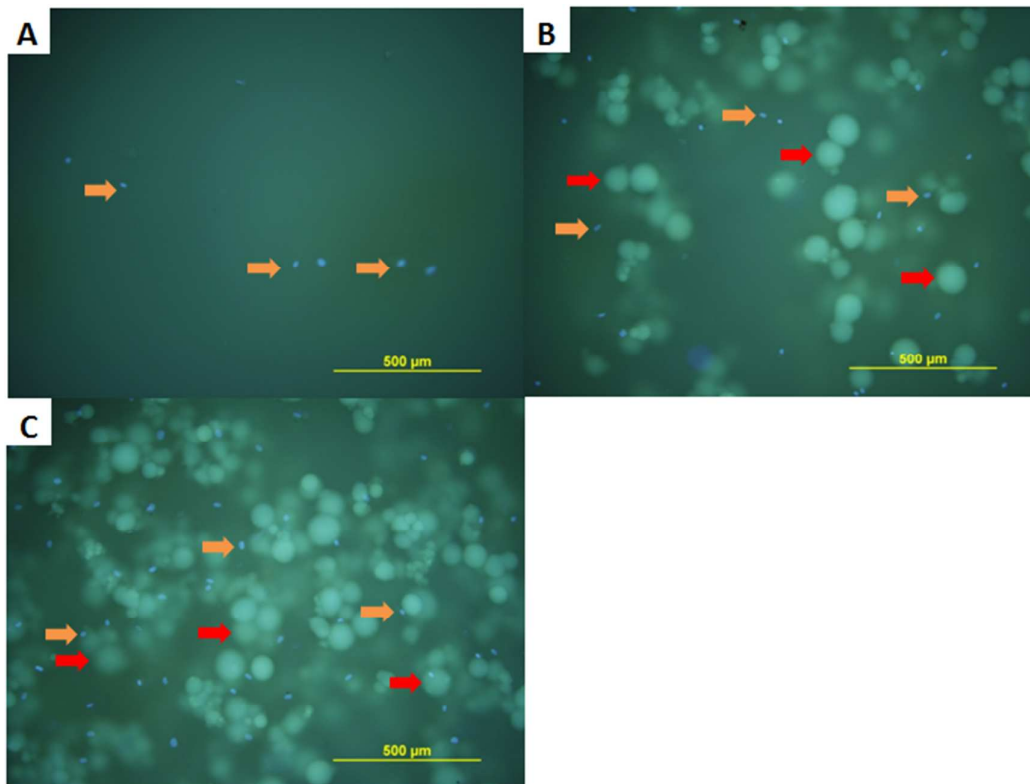


Figure S4. DAPI staining of rat dermal fibroblasts for cell attachment test for adhesive containing 0 (A), 3.75 (B), and 7.5 (C) wt% microgel. Small blue dots (orange arrows): cell nuclei; Large cyan dots (red arrows): gelatin microgels.