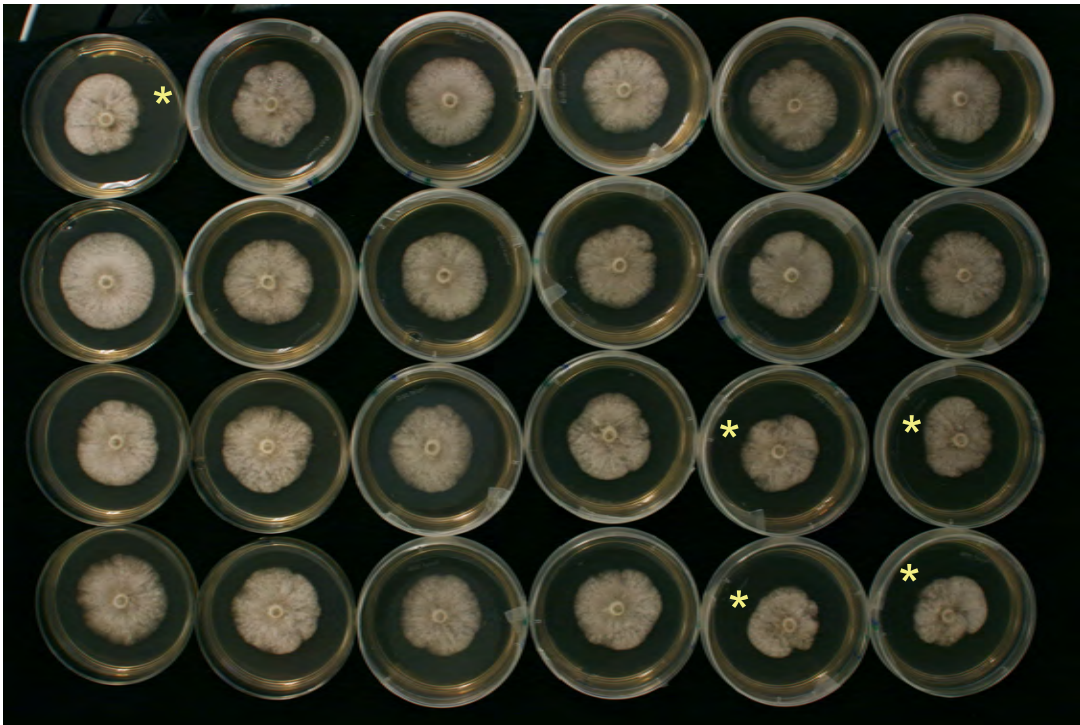


A) Pr-102 (*nwt*, oak)



B) Pr-745 (*wt*, bay)



Additional file 1. *Nwt* colony morphology seen among Petri plate replicates. *Nwt* is observed in A) oak isolate Pr-102 (*nwt* colonies indicated with asterisks) but has not been observed for B) Pr-745 from rainwater collected near infected California bay. Colonies were grown on solid 1x CV8A medium for 7 days at 21°C in dark. Criteria for *nwt* morphology can be found in Evaluation of colony morphology in Methods.