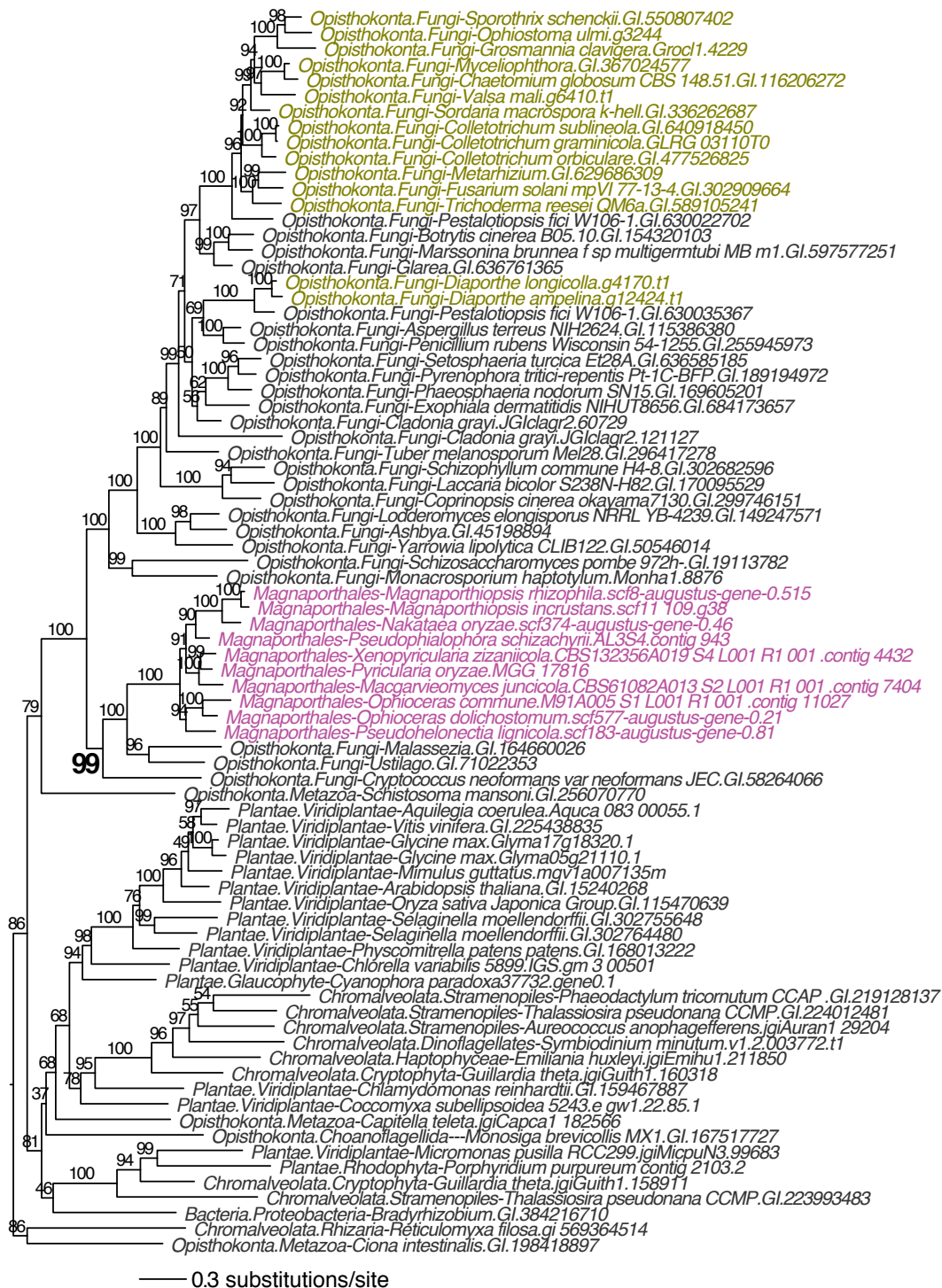


Additional file 3. *Magnaportheopsis incrustans* genes putatively derived from non-Pezizomycotina species via HGT.



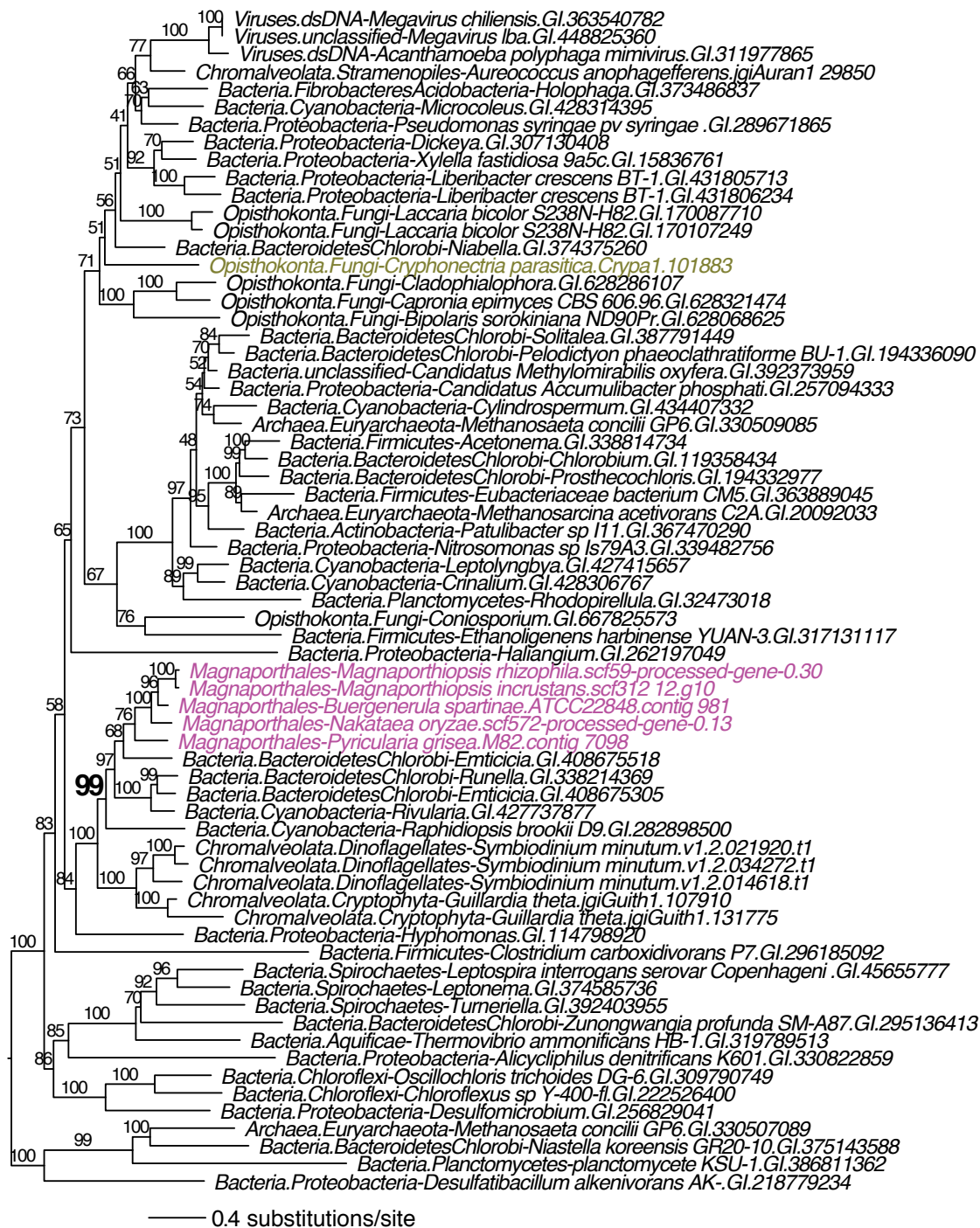
Maximum likelihood tree of a glutathionine S-transferase gene generated by IQtree. Branch supports are UFboot (Ultrafast bootstrap) estimated using 2,000 bootstrap replicates (see Methods in main text). Pink color indicates Magnaportheales. Olive color indicates other Sordariomycetes species.

Additional file 3. *Magnaporthiopsis incrustans* genes putatively derived from non-Pezizomycotina species via HGT.



Maximum likelihood tree of a FAD-dependent oxidoreductase gene generated by IQtree. Branch supports are UFboot (Ultrafast bootstrap) estimated using 2,000 bootstrap replicates (see Methods in main text). Pink color indicates Magnaporthales. Olive color indicates other Sordariomycetes species.

Additional file 3. *Magnaporthiopsis incrustans* genes putatively derived from non-Pezizomycotina species via HGT.



Maximum likelihood tree of a peptidase C1 gene generated by IQtree. Branch supports are UFboot (Ultrafast bootstrap) estimated using 2,000 bootstrap replicates (see Methods in main text). Pink color indicates Magnaporthales. Olive color indicates other Sordariomycetes species.