

Supplementary Fig. 1. Sato et al. (for review)

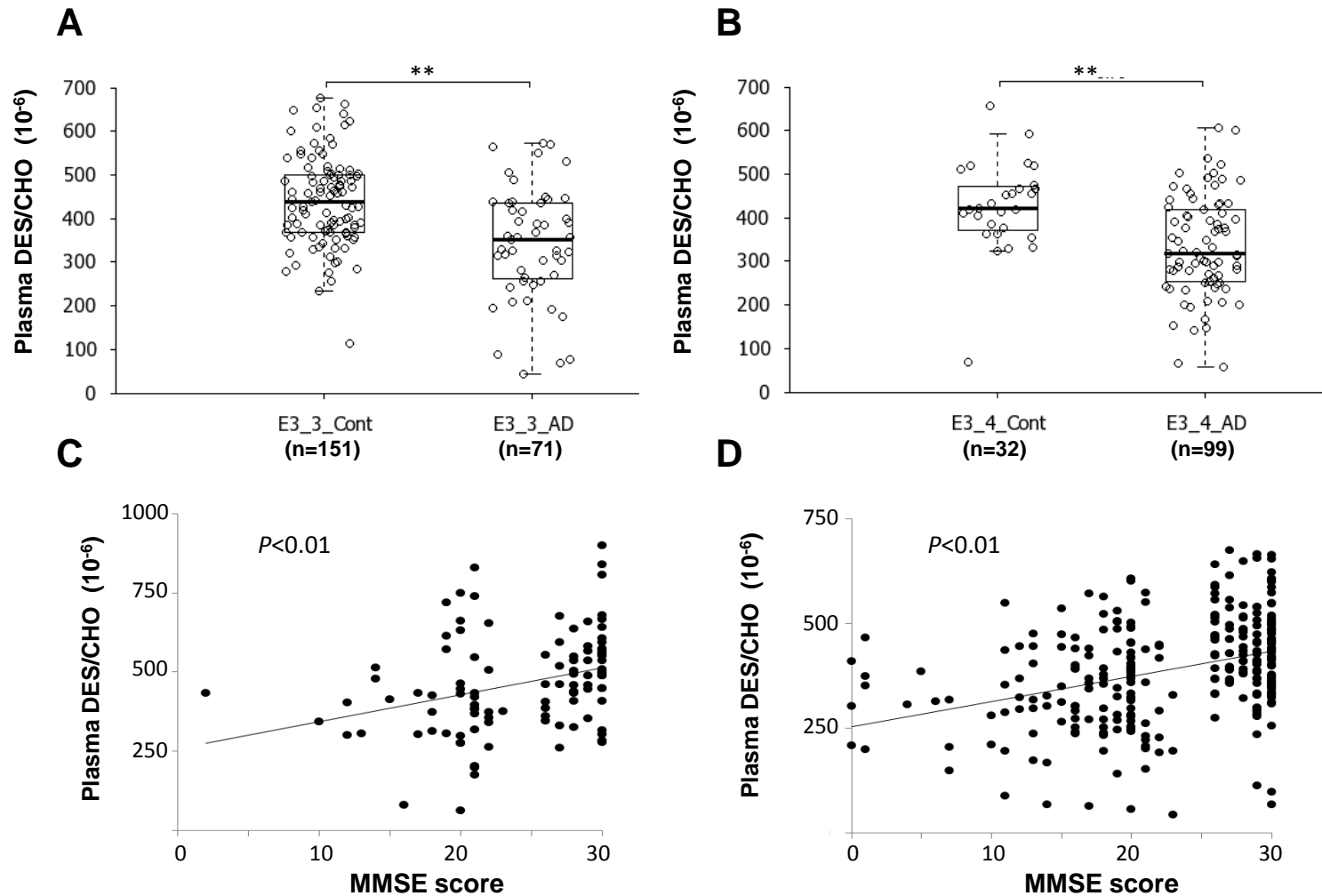


Figure legend Supplementary Fig. 1:

- (A) Comparison of plasma DES/CHO between control subjects and AD patients with *APOE* $\epsilon 3/3$. **, $p < 0.01$.
(B) Comparison of plasma DES/CHO between control subjects and AD patients with *APOE* $\epsilon 3/4$. **, $p < 0.01$.
(C) Correlation between plasma DES/CHO and MMSE score in males (n=105).
(D) Correlation between plasma DES/CHO and MMSE score in females (n=281).

Supplementary Fig. 2. Sato et al. (for review)

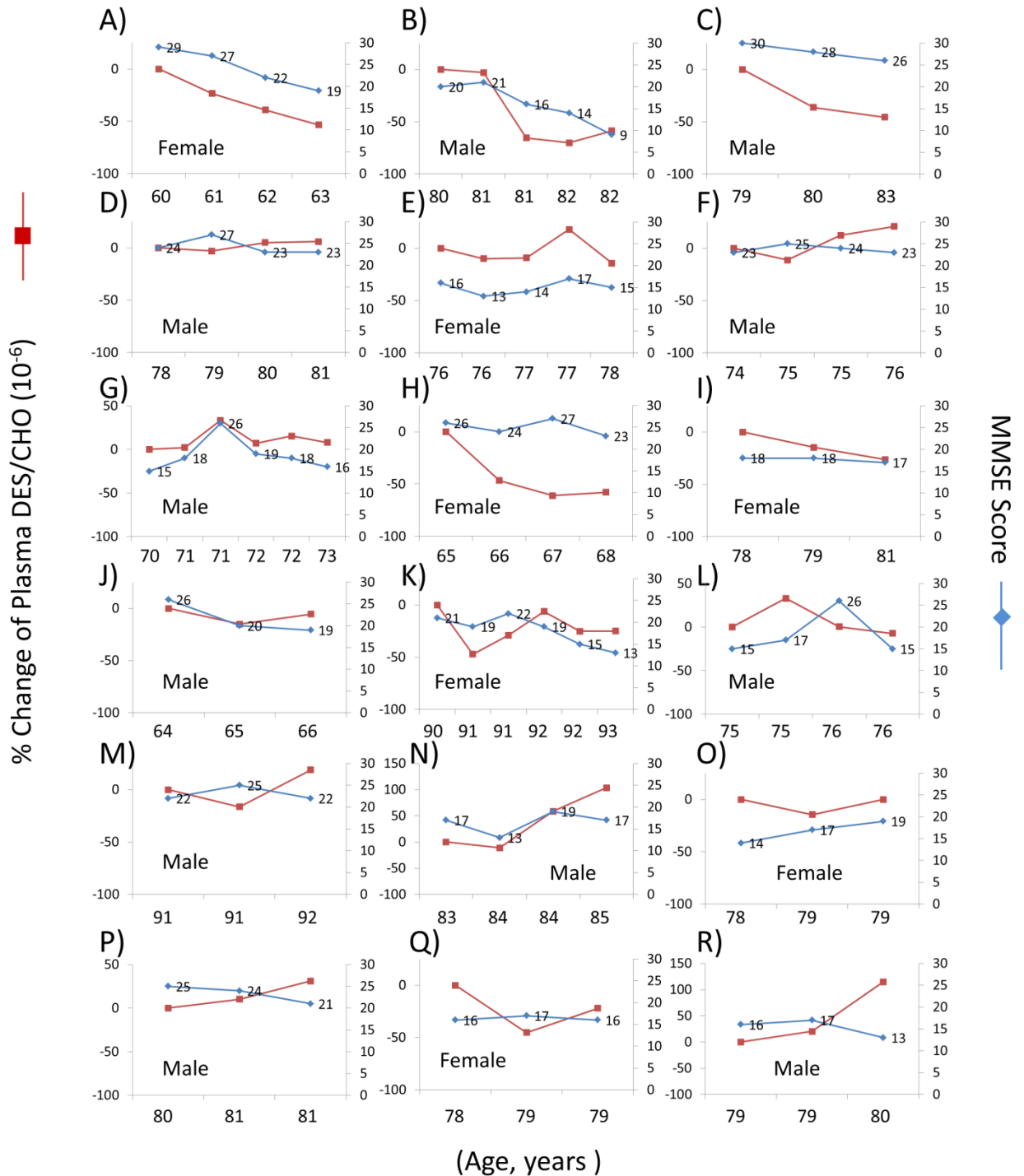


Figure legend for Supplementary Fig. 2:

Changes in plasma DES/CHO and MMSE scores in AD patients (A-R), MCI subjects (S-X), and normal subjects (Y-IV). The longitudinal change in plasma DES/CHO (red line) was compared with the baseline value. Longitudinal MMSE scores are shown in blue.

Supplementary Figure 2. Sato et al. (continued)

