

Legend to the supplementary figures

Figure 1S. Scattergrams depicting the distribution of sebum excretion rates (SER) in the study participants according to their clinical severity grade. The red line and cross represent the median and mean values, respectively. * $p \leq 0.05$ indicated statistically significant differences towards clear participants calculated by analysis of variance (ANOVA) following post-hoc HSD Tukey's test.

Figure 2S. Eulero-Venn's diagram depicting the number of entities that were commonly modified in the respective severity grades compared to unaffected sebum with a $FC \geq 2$.

Figure 3S. MS spectra of diglycerides (DGs) differently regulated in acne sebum according to the severity grade.

Table 1S Demographic characteristics of study participants

GRADING	SIZE	%	¹ AGE (MEAN ± SD)	² SER (MEAN ± SD)
CLEAR	17	27.9	14.1 ± 1.2	4.1 ± 2.2
MILD	13	21.3	13.5 ± 1.1	4.6 ± 1.7
MODERATE	19	31.1	14.2 ± 1.8	5.7 ± 3.0
SEVERE	12	19.7	15.2 ± 1.8	7.2 ± 2.5*
TOTAL	61	100	14.2 ± 1.6	5.3 ± 2.7

GRADING	F	%	¹ AGE (MEAN ± SD)	² SER (MEAN ± SD)
CLEAR	10	16.4	14.2 ± 1.3	4.3 ± 2.6
MILD	8	13.1	13.5 ± 1.4	4.6 ± 1.7
MODERATE	12	19.7	14.3 ± 2.2	4.3 ± 1.5
SEVERE	2	3.3	14.0 ± 1.4	7.3 ± 1.7*
TOTAL	32	52.5	14.1 ± 1.7	4.8 ± 2.2

GRADING	M	%	¹ AGE (MEAN ± SD)	² SER (MEAN ± SD)
CLEAR	7	11.5	14.0 ± 1.0	3.9 ± 1.6
MILD	5	8.2	13.6 ± 0.5	4.6 ± 1.7
MODERATE	7	11.5	13.9 ± 0.9	5.2 ± 2.0
SEVERE	10	16.4	15.4 ± 1.8	7.2 ± 2.7*
TOTAL	29	47.5	14.4 ± 1.4	5.9 ± 3.0

¹In years

²SER= Sebum excretion rate (µg/cm²/minute)

*p<0.05, significance of difference between clear and acne grade calculated with ANOVA with post-hoc HSD Tukey's test.

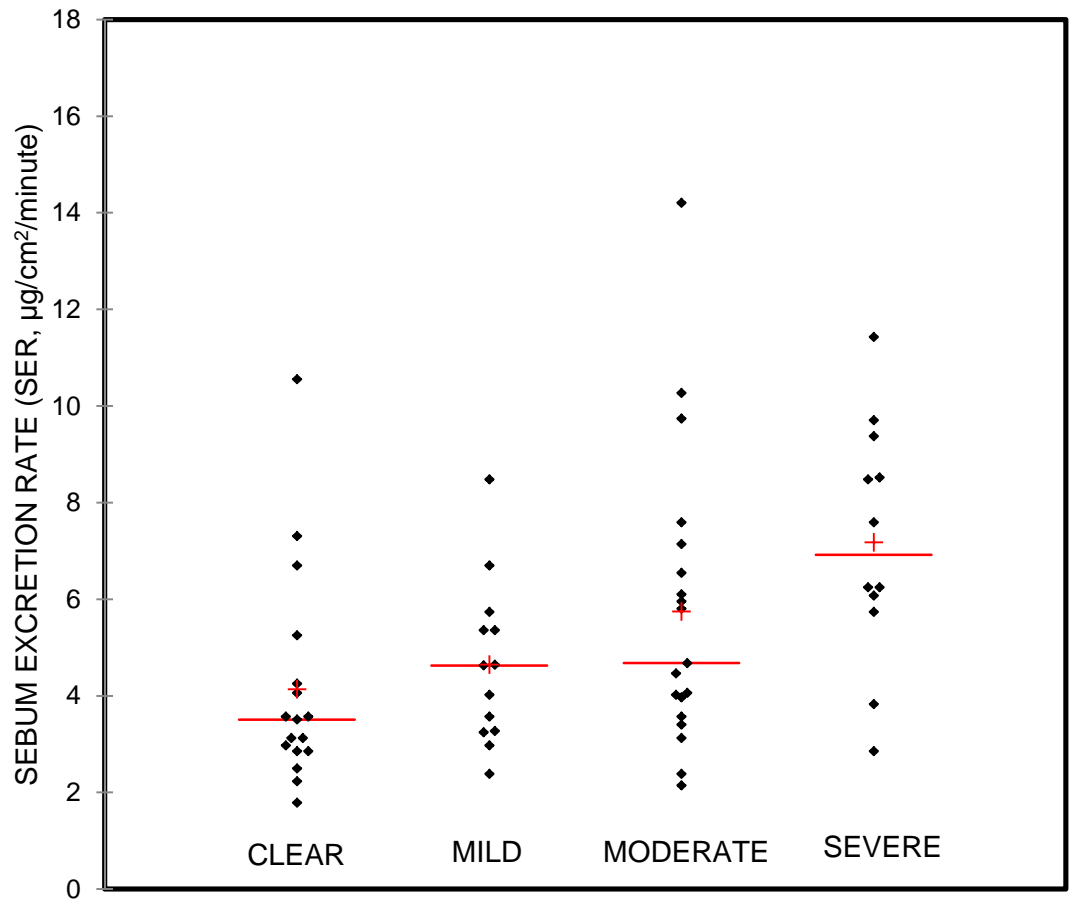
Table 2S. List of the shared lipid species in the Eulero-Venn's diagram (Supplementary Figure 2S)

Lipid class	Elemental formula or annotation	RT*	MILD	MODERATE	SEVERE
Fatty acyls	C21H36O5	8.4710		#	#
Fatty acyls	C27H36O	16.418	#	#	#
Fatty acyls	C21H36O5	8.4710		#	#
Fatty acyls	C40H56O	21.803		#	#
Glycerolipids	DG 30:1	22.999		#	#
Glycerolipids	MG 16:0**	23.699		#	#
Glycerolipids	DG 31:1	23.889		#	#
Glycerolipids	DG 32:1	24.602		#	#
Glycerolipids	DG 34:1	25.799		#	#

*RT= retention time in minutes

**Interpreted as a fragment of FA 16:0-bearing DGs

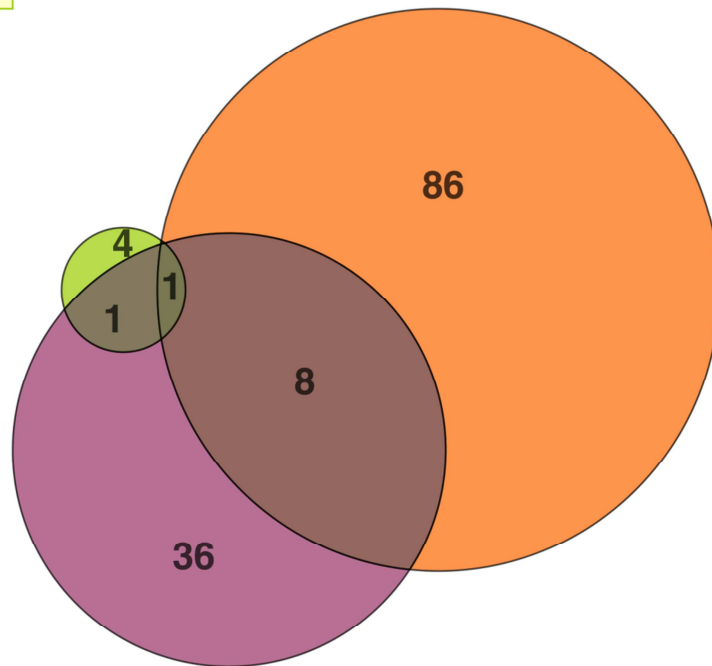
#Fold change > 2



Supplementary Figure 1S

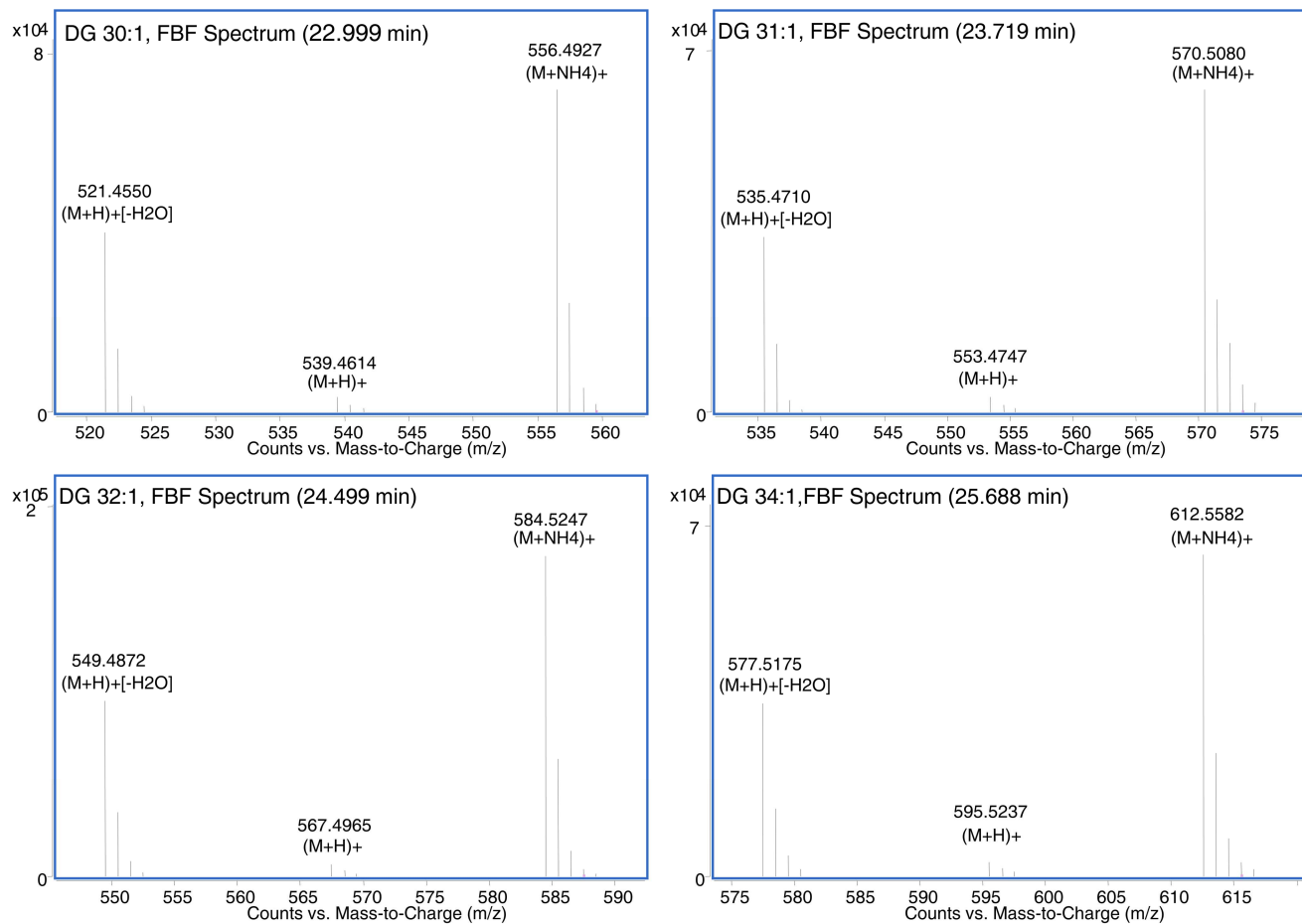
Entity List 1 : (6) T Test
unpaired [MILD] Vs [CLEAR] P
<= 0.05 FC >=2.0
6 entities

Entity List 2 : (95) T Test
unpaired [MODERATE] Vs
[CLEAR] P <= 0.05 FC >=2.0
95 entities



Entity List 3 : (46) T Test
unpaired [SEVERE] Vs [CLEAR]
P <= 0.05 FC >=2.0
46 entities

Supplementary Figure 2S



Supplementary Figure 3S