

# Angiocrine functions of organ-specific endothelial cells

Shahin Rafii<sup>1</sup>, Jason M. Butler<sup>1</sup> & Bi-Sen Ding<sup>1</sup>

**Endothelial cells that line capillaries are not just passive conduits for delivering blood. Tissue-specific endothelium establishes specialized vascular niches that deploy sets of growth factors, known as angiocrine factors. These cues participate actively in the induction, specification, patterning and guidance of organ regeneration, as well as in the maintenance of homeostasis and metabolism. When upregulated following injury, they orchestrate self-renewal and differentiation of tissue-specific resident stem and progenitor cells into functional organs. Uncovering the mechanisms by which organotypic endothelium distributes physiological levels of angiocrine factors both spatially and temporally will lay the foundation for clinical trials that promote organ repair without scarring.**

The microvascular circulation comprises a vast network of capillary endothelial cells (ECs) that connects the arteries to veins. These vascular beds, which are distinct from lymphatic vessels, were perceived as passive conduits with a responsibility for delivering oxygen and nutrients, modulating the coagulation of blood, regulating the transportation of inflammatory cells and serving as gatekeepers of cellular metabolism<sup>1,2</sup>. However, these cells also perform other necessary physiological tasks: sustaining the homeostasis of resident stem cells and guiding the regeneration and repair of adult organs without provoking fibrosis.

These newly identified roles emerged from microanatomical observations, which revealed that epithelial, haematopoietic, mesenchymal and neuronal cells — together with their corresponding repopulating stem and progenitor cells — reside in proximity to capillary ECs. Genetic and biochemical studies have shown that ECs serve as a fertile, instructive niche that has important roles in homeostasis, metabolism and directing organ regeneration in a perfusion-independent manner. Tissue-specific ECs regulate these complex tasks by supplying the repopulating cells with stimulatory and inhibitory growth factors, morphogens, extracellular matrix components and chemokines. These EC-derived paracrine factors are defined collectively as angiocrine factors<sup>3,4</sup> (Box 1).

The tissue-specific instructive functions of ECs have been demonstrated in studies showing that the deletion of angiocrine factors in adult ECs disrupts stem-cell homeostasis and impairs organ repair without compromising blood supply. Notably, intravenous transplantation and engraftment of tissue-specific ECs following injury augment organ reconstitution and function without instigating maladaptive fibrosis. On the basis of these observations, organotypic capillary ECs are now recognized as specialized niche cells that, through balanced physiological expression of angiocrine factors, maintain stem cells' capacity for quiescence and self-renewal. Spatially and temporally coordinated production of angiocrine factors after organ injury initiates and completes organ regeneration. This transformative model has opened a fresh chapter in translational vascular medicine. It has also raised the possibility that the inherent pro-regenerative potential of tissue-specific endothelium could be used therapeutically to orchestrate fibrosis-free healing and to restore homeostasis in tissues.

Although the angiocrine signals that guide the formation of the liver<sup>5</sup> and pancreas<sup>6</sup> in the fetus have been defined, the contribution of angiocrine signalling to the modulation of homeostasis and regeneration in adult organs has not been well studied until now. In this Review, we describe the instructive and inductive contributions of adult

tissue-specific ECs to the homeostatic and regenerative functions of repopulating stem and progenitor cells.

## Instructive interactions of capillary ECs

The adult human body contains 10 trillion–60 trillion ECs that cover a vast surface area<sup>7</sup>. Tightly intertwined monolayers of ECs form the lumen of the blood circulatory system, which consists of large arteries, veins and extensively branched capillaries. Lymphatic vessels run parallel to capillaries and exist as an independent and open circulatory system. The surface area of capillaries represents more than 95% of the total circulatory surface area and arborizes into almost every cellular component of organs.

Tissue-specific stem and progenitor cells are strategically positioned in close proximity to homotypic capillary ECs (Fig. 1a–d). This intimate cellular interaction facilitates the delivery of membrane-bound and soluble angiocrine factors from specialized ECs to the recipient cells, which are located on the basolateral surface of blood vessels. Moreover, the luminal surface of ECs can serve as a signalling platform for stem and immune cells that navigate through the circulation. Tissue-resident parenchymal and stem cells regulate the activation state and response of ECs to regenerative stimuli through the production of angiogenic factors such as vascular endothelial growth factor (VEGF)-A, fibroblast growth factor (FGF)-2, stromal-cell-derived factor (SDF-1; also known as CXCL12), angiopoietins and thrombospondin-1 (TSP-1) (Fig. 1e). Thus, the capillary network — without the influence of pericytes and mesenchymal cells — provides an adaptive platform that has the functional plasticity to integrate and relay these intravascular and extravascular cues to both resting and regenerating organs.

## Angiocrine-mediated self-renewal and differentiation

The formation of new blood vessels through angiogenesis is crucial to meet the metabolic demands of organs<sup>1,2</sup>. Accumulating evidence indicates that ECs regulate organ homeostasis and repair through the production of angiocrine factors in an angiogenesis-independent manner (Box 1). The Greek philosopher and scientist Aristotle, who is widely considered to be the founder of classical biology, proposed that blood vessels direct the configuration of organs<sup>8</sup>. On pathophysiological stress (exposure to ionizing radiation, chemical injury or hypoxic conditions, for example) or loss of tissue mass, defined angiocrine factors emanate from activated ECs (Table 1). The activated ECs relay inflammatory and

<sup>1</sup>Ansary Stem Cell Institute, Department of Medicine, Division of Regenerative Medicine, Weill Cornell Medical College, 1300 York Avenue, New York, New York 10065, USA.

injury-induced angiocrine signals to quiescent tissue-specific stem cells, which drives regeneration and enforces developmental set points to re-establish homeostatic conditions. Microvascular ECs therefore fulfil the criteria for professional niche cells that choreograph tissue regeneration by cradling and nurturing stem cells with physiological levels and proper stoichiometry of angiocrine factors. The contribution of the endothelial niche to mediating stem-cell homeostasis and function has been studied in depth in neural stem cells (NSCs), spermatogonial stem cells and haematopoietic stem and progenitor cells (HSPCs).

### Neural stem cells

The adult brain contains two regions in which NSCs undergo neurogenesis: the ventricular subventricular zone (V-SVZ) and the subgranular zone (SGZ). In the V-SVZ, type B1 quiescent and activated NSCs give rise to type C transit amplifying cells and type A mature neuroblastic cell progenies, which are positioned in the proximity of capillary ECs<sup>9–12</sup> (Fig. 2a). Similarly, in the SGZ, which is located in the dentate gyrus of the hippocampus, NSCs and their progenies reside near capillaries<sup>13</sup>. Brain capillaries are lined with ECs that are positive for VEGF receptor (VEGFR)-2 and vascular endothelial (VE)-cadherin, positive or negative for the CD133 antigen, negative for or express only low levels of thrombomodulin, and that display zones of variable permeability<sup>4,10,12</sup> (Figs 1d, 2a). Subsets of V-SVZ and SGZ blood vessels have a specialized planar morphology in which NSCs extend their endfeet to contact ECs. This close proximity supports the possibility that angiocrine factors regulate neurogenesis.

*In vitro* studies of neuronal cells that were co-cultured with heterotypic-derived ECs support a model in which ECs regulate NSC homeostasis and differentiation. Primary human umbilical vein ECs have been shown to produce brain-derived nerve growth factor (BDNF), which fosters the expansion of neuroblasts<sup>14</sup>. Bovine pulmonary artery ECs and polyoma-mid-T-immortalized mouse brain capillary ECs, but not smooth-muscle cells, trigger Notch signalling by secreting soluble factors that increase the self-renewal of NSCs and drive neurogenesis<sup>9</sup>. Follow-up studies showed that pigment epithelium-derived factor (PEDF) was one of the secreted angiocrine factors that stimulates Notch-dependent self-renewing symmetric divisions of NSCs<sup>15</sup>.

Subsequent *in vivo* experiments demonstrated that angiocrine factors derived from brain ECs regulate the homeostasis and regeneration of NSCs both through direct cellular contact and in a paracrine manner<sup>13,16–18</sup>. Under steady-state conditions, angiocrine expression of the membrane-bound proteins EphrinB2 and Jagged-1 (refs 19, 20) sustains the dormancy of quiescent NSCs. Direct contact of EC-derived EphrinB2 and Jagged-1 with the endfeet of these cells suppresses their entry into the cell cycle and keeps them in an undifferentiated state. Moreover, neurotrophin-3 (NT-3), which is selectively produced by ECs in the brain and choroid plexus, maintains NSC quiescence, in part, through the induction of endothelial nitric-oxide synthase and the production of nitric oxide<sup>21,22</sup>. Although NSCs could also supply endothelial nitric-oxide synthase, the angiocrine release of NT-3 in the V-SVZ and cerebrospinal fluid dictates nitric oxide production that sustains stem-cell quiescence. Conditional deletion of NT-3 in adult mouse brain ECs depletes NT-3 in both cerebrospinal fluid and the V-SVZ, which leads to an increase in dividing activated NSCs that express glial fibrillary acidic protein (GFAP) and accelerates the exhaustion of the NSC pool. Thus, angiocrine factors actively enforce the quiescence that is crucial for the long-term maintenance of the NSC population.

During regenerative processes, irrigation of the V-SVZ by soluble angiocrine factors such as BDNF<sup>14</sup>, PEDF<sup>23</sup>, betacellulin<sup>24</sup> and placental growth factor-2 (PlGF-2)<sup>25</sup>, and of the SGZ by VEGF-C<sup>26,27</sup>, orchestrates proliferation and differentiation of both quiescent and activated NSCs into transit amplifying cells and neuroblasts. Notably, graded angiocrine deposition of SDF-1 (ref. 28) and BDNF<sup>29</sup> by blood vessels that run along the rostral migratory stream in the mouse brain guides the proliferation of transit amplifying cells and their migration to the olfactory bulb<sup>30</sup>. Therefore, brain capillary ECs not only supply the V-SVZ and SGZ with

### BOX 1

## Physiology of angiocrine factors

The paracrine factors produced by ECs that maintain organ homeostasis, balance the self-renewal and differentiation of stem cells and orchestrate organ regeneration and tumour growth are known as angiocrine factors. The term ‘angiocrine’ was created to emphasize the biological significance of the instructive factors produced by the ECs that influence the homeostasis of healthy and malignant tissues<sup>3</sup>. Angiocrine factors comprise secreted and membrane-bound inhibitory and stimulatory growth factors, trophogens, chemokines, cytokines, extracellular matrix components, exosomes and other cellular products that are supplied by tissue-specific ECs to help regulate homeostatic and regenerative processes in a paracrine or juxtacrine manner. These factors also play a part in adaptive healing and fibrotic remodelling.

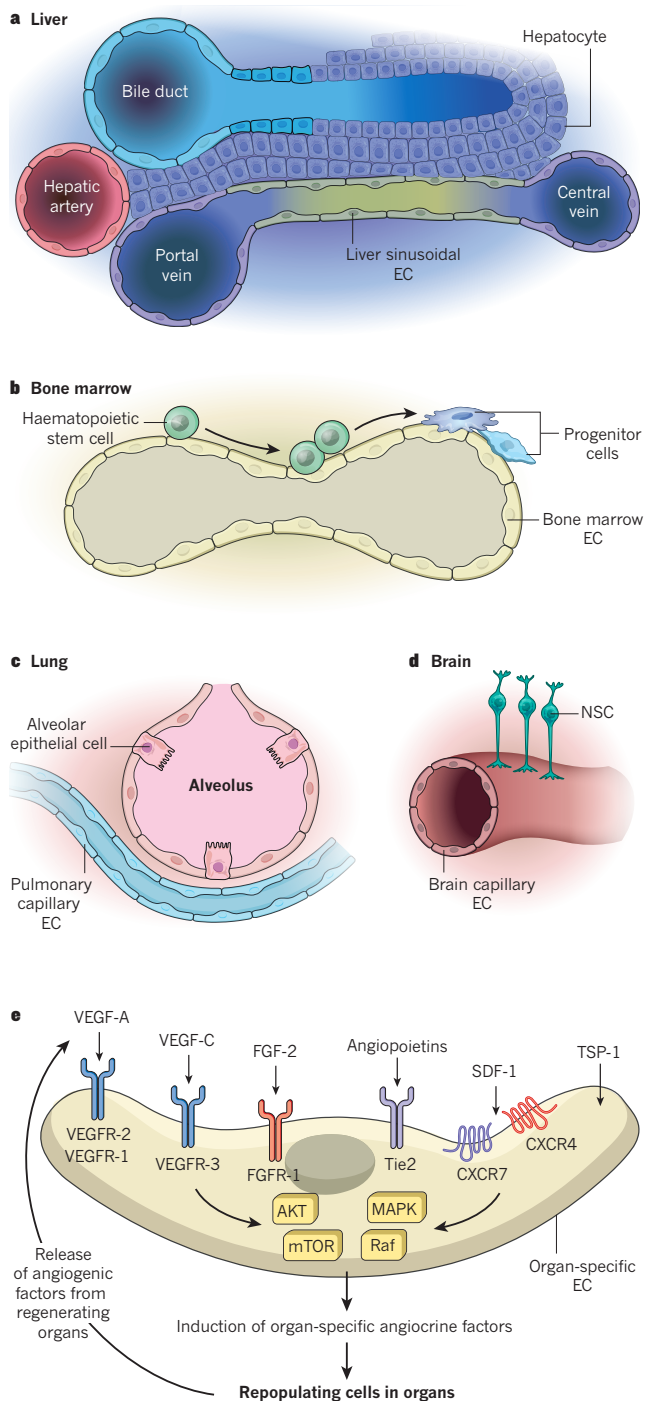
Subsets of angiocrine factors can act as morphogens to determine the shape, architecture, size and patterning of regenerating organs. The angiocrine profile of each tissue-specific bed of ECs is different and reflects the diversity of cell types found adjacent to ECs in organs (Fig. 1a–e). Although subsets of angiocrine factors are produced constitutively, some angiogenic factors can modulate the production of other tissue-specific angiocrine factors. For example, VEGF-A induces the expression of defined angiocrine factors through interaction with VEGFR-1 and VEGFR-2 (Fig. 1e). Similarly, FGF-2 (through the activation of FGFR-1) and the angiopoietins (through their interaction with the receptor Tie2) drive the expression of unique clusters of angiocrine factors. TSP-1 functions in a complex manner and can act as an inhibitory angiogenic factor as well as directly influence the differentiation of stem and progenitor cells. The molecular programmes that govern the production of context-dependent angiocrine factors from organ-specific ECs remain undefined.

region-specific regenerative and path-finding cues, but also secrete angiocrine factors into cerebrospinal fluid to potentially modulate neuronal homeostasis throughout the brain.

Crosstalk between neuronal cells and angiogenic ECs allows the endothelial niche to adapt to regenerative neurogenesis (Fig. 1e). During vascular sprouting, cross-activation of ECs by neuronal-derived angiogenic factors regulates the differential production of angiocrine factors (Fig. 2a). After hypoxic injury, upregulation of VEGF-A through the activation of VEGFR-2 enhances the production of nitric oxide, which induces BDNF in brain capillary ECs to drive the expansion and maturation of transit amplifying cells<sup>16</sup>. Growth differentiation factor (GDF)-11 also enhances neurogenesis by remodelling the blood vessels<sup>31</sup>. Thus, endothelial niche cells in the brain possess a remarkable angiocrine plasticity that can adapt to the physiological demands of NSCs to initiate, execute and finalize neurogenic programmes.

### Spermatogonial stem cells

Undifferentiated type A spermatogonial stem cells from mice reside in the vicinity of interstitial capillaries within the seminiferous tubules of the testes<sup>32</sup>. After perturbation of the testicular microenvironment, transplanted donor-derived spermatogonial stem cells localize to zones that are enriched in capillaries. *In vitro* studies have shown that spermatogonial stem cells that express the G-protein-coupled receptor GPR125 can directly convert to multipotent progenitor cells. Incubation of such spermatogonial stem cells with vascular-like stromal cells that carry the CD34 antigen is essential for the conversion of spermatogonial stem cells to pluripotent stem cells<sup>33–35</sup>, and indicates that angiocrine factors play



**Figure 1 | Specialized structures of capillary ECs and their crosstalk with parenchymal and stem cells.** **a**, In the liver, specialized fenestrated liver sinusoidal ECs are juxtaposed to hepatocytes. **b**, In haematopoietic organs, such as the bone marrow, arterial and sinusoidal EC-lined vessels are in direct contact with stem and progenitor cells. **c**, In the lungs, non-fenestrated pulmonary capillary ECs reside near alveolar epithelial cells. **d**, In the brain, capillaries composed of tightly connected ECs are found in the vicinity of NSCs. **e**, Under steady-state conditions or during angiogenesis, upregulation of angiogenic factors, such as VEGF-A through activation of VEGFR-2 and VEGFR-1, FGF-2 through activation of FGFR-1, and the angiopoietins through activation of the Tie2 receptor not only modulate angiogenic processes, but also trigger the expression of tissue-specific angiocrine factors. TSP-1 both tempers the angiogenic response and regulates the proliferation and differentiation of repopulating cells in organs, such as islet cells in the pancreas and alveolar epithelial cells in the lungs. AKT–mTOR and MAPK–Raf signalling pathways play a seminal part in inducing expression of organ-specific angiocrine factors.

an important part in regulating the maintenance and self-renewal of spermatogonial stem cells. Indeed, transcriptional analysis of testicular endothelium suggests that ECs could be a rich source of glial-cell-line-derived neurotrophic factor (GDNF)<sup>4</sup>. Further analysis of the phenotypic and functional properties of testicular ECs is necessary to determine the degree to which ECs influence spermatogonial stem-cell homeostasis by deploying angiocrine factors and depositing peritubular extracellular matrix components.

### Haematopoietic stem cells

The first evidence that ECs establish an instructive niche for haematopoietic cells (Fig. 2b) was the demonstration that homotypic human bone-marrow-derived ECs expand human umbilical cord blood-derived CD34<sup>+</sup> cells *ex vivo*<sup>36,37</sup>. Furthermore, heterotypic primary ECs isolated from brain, heart and fetal tissues have since been shown to promote the proliferation of mouse<sup>38,39</sup>, human<sup>40,41</sup> and non-human primate HSPCs<sup>42</sup>. However, these co-culture studies were performed in media supplemented by serum that contained supraphysiological doses of growth factors and under ambient oxygen tension, which masked the full potential of ECs to regulate the function of the cells.

The development of techniques for serum-free and xenobiotic-free culture of primary human or mouse homotypic EC monolayers (Box 2) has facilitated the identification of angiocrine factors that support the self-renewal and differentiation of HSPCs in such co-culture studies<sup>43,44</sup>. Co-culture studies have also been used to demonstrate that bone-marrow sinusoidal ECs that are positive for VEGFR-3, VEGFR-2, VE-cadherin and CD31 stimulate the self-renewal of HSPCs by expressing soluble and membrane-bound angiocrine factors<sup>45–47</sup>, including bone morphogenic protein (BMP)2 and BMP4, insulin growth factor binding protein (IGFBP)2, SDF-1, Desert hedgehog (Dhh) protein, Notch ligands, Wingless-type MMTV integration site (Wnt)5a, and Kit ligand (Fig. 2b). Bone-marrow sinusoidal ECs also drive the lineage-specific differentiation of HSPCs by producing granulocyte macrophage colony-stimulating factor (GM-CSF), interleukin (IL)-6, IL-8, granulocyte colony-stimulating factor (G-CSF), IL-1, tumour necrosis factor (TNF), chemokines and metalloproteinases<sup>45</sup>. Notably, ECs that are transitioning through various activation states also produce inhibitory factors, such as transforming growth factor (TGF)- $\beta$ 1 (ref. 48), dickkopf-related protein (DKK)1 and DKK3, which block WNT signalling, and Noggin, which interferes with BMP signalling<sup>45</sup> (Fig. 2b, Table 1). Thus, ECs express inhibitory and stimulatory angiocrine factors that regulate the quiescence and proliferation of HSPCs.

ECs cultured under serum-free conditions were shown to supply angiocrine factors at physiological levels that increase the self-renewal of repopulating authentic mouse haematopoietic stem cells by 150-fold<sup>46</sup> and of human cord blood severe combined immunodeficiency repopulating cells by 8-fold<sup>49</sup>. Direct contact between haematopoietic cells and ECs is essential for the self-renewal and differentiation of HSPCs<sup>45–47</sup>. Compared with mesenchymal cells, ECs are more efficient at expanding umbilical cord blood-derived HSPCs<sup>50</sup>. Other angiocrine factors, such as prostaglandin E2 (PGE2) (refs 51, 52), pleiotrophin<sup>53</sup> and epidermal growth factor (EGF)<sup>54</sup>, drive haematopoietic reconstitution, which establishes ECs as a physiological repository of HSPC-supportive factors.

The first *in vivo* evidence to support the role of the endothelial niche in haematopoiesis came from a study of mice that are unable to produce soluble Kit ligand, an essential regulator of haematopoietic stem-cell biology<sup>55</sup>. It demonstrated that compartmentalized — yet interactive — stromal and endothelial niche cells regulate the regeneration of HSPCs. In response to physiological stress, the activation of matrix metalloproteinase (MMP)-9 leads to the release of soluble Kit ligand from cells in the niche, which stimulates the regeneration and proper transportation of HSPCs. Follow-up studies showed that phenotypically marked stem cells reside in close proximity to the endothelial niche<sup>56</sup>. Further evidence indicated that haematopoietic regeneration and thrombopoiesis after chemotherapy or irradiation is impaired by the conditional deletion of VEGFR-2 in ECs of adult mice<sup>47</sup> and by the targeting of VE-cadherin to disrupt reconstitution

**Table 1 | Heterogeneity of angiocrine factors under steady-state conditions and during regeneration**

Origin of EC	Repopulating cells	Regenerative model	Angiocrine factors	EC-specific gene knockout and emergent phenotype
Bone marrow	HSPCs	Steady state; chemotherapy, irradiation; angiogenesis	Kit ligand, SDF-1, IGFBP2, DKK1, DKK3, Wnt5a, Wnt2, TGF- $\beta$ 1, Dhh, PGE2, BMP2, BMP4, Noggin <b>AKT activation</b> Kit ligand, Jagged-1, Dhh, IGFBP2, FGF-2, Ang2, EGF, Pleiotrophin <b>AKT-MAPK activation</b> IL-6, G-CSF, GM-CSF, M-CSF, Ang2, Jagged-1, Jagged-2, MMPs, IL-1, TNF	<b>Kit ligand</b> <sup>61</sup> , <b>Sdf1</b> (ref. 62) Stem-cell depletion <b>Jagged 1</b> (ref. 59) Impaired haematopoietic recovery and stem-cell depletion <b>Vegfr2</b> (ref. 47) Angiocrine dysregulation, haematopoietic failure <b>VE-cadherin</b> (inhibition) <sup>57</sup> Impaired haematopoietic recovery, thrombocytopenia <b>E-selectin</b> <sup>124</sup> Disruption to HSPC proliferation
Testicular capillary	GPR125 <sup>+</sup> germline stem cells	Chemically induced sterilization	GDNF, FGF-2	Not available
Brain capillary	NSCs, transit amplifying cells, neuroblasts	Steady state; regeneration; angiogenesis	Jagged-1, EphrinB2, NT-3, PEDF, betacellulin, VEGF-C, PIGF2, nitric oxide, BDNF	<b>Jagged-1</b> (ref. 19), <b>Ephrin B2</b> (ref. 19) Exhaustion of NSCs <b>NT-3</b> (ref. 20) Decrease in NSC cycling
Liver sinusoid, central vein of the liver	Hepatocytes; stellate cells; Axin2 <sup>+</sup> Tbx3 <sup>+</sup> liver stem cells	70% partial hepatectomy; bile-duct ligation; acute and chronic injury through carbon tetrachloride; homeostatic conditions	Id1-Wnt2, Id1-HGF, Angiopoietin-2, Wnt2, Wnt9b, Rspondin3 <b>Anti-fibrosis</b> Apelin, Noggin, Follistatin-like 1 <b>Pro-fibrosis</b> TGF- $\beta$ 1, BMP4	<b>Angiopoietin 2</b> (ref. 85) Shift in recovery set point <b>Id1</b> (ref. 81) Impaired regeneration <b>Cxcr4</b> (ref. 86) Decrease in fibrotic healing <b>Cxcr7</b> (ref. 86) Increase in pro-fibrotic healing <b>Wntless</b> <sup>82</sup> Defective regeneration and self-renewal <b>R-spondin 3</b> (ref. 83) Impaired hepatic zonation
Pulmonary capillary	Lung alveolar epithelial cells, AT2 cells, basal epithelial cells, epithelial progenitor cells	Left-lung pneumonectomy; bleomycin	MMP-14-mediated EGFR ligand release, BMP4-NFATc1-TSP-1	<b>Mmp14</b> (ref. 90) Abrogated neo-alveogenesis but intact capillary vasculature <b>Vegfr2</b> (ref. 88), <b>Fgfr1</b> (ref. 88) Impaired alveolar regeneration <b>Tsp1</b> (ref. 93) Impaired epithelial regeneration
Type H and type L vessels in osteogenesis	Osteogenic cells	Steady state; regeneration	Noggin, BMPs, Jagged-1	<b>Noggin</b> <sup>74</sup> Impaired osteogenesis
Pancreatic capillary	Islet cells, Pdx1 <sup>+</sup> islet progenitor cells	Streptozocin; pluripotent stem-cell derivatives	BMP4, BMP2, TSP-1, EGFL7	<b>Egfl7</b> (ref. 100) Delayed islet-cell differentiation
White-fat capillary	Adipose stem cells	Steady state; regeneration	IGF1, IGFBP, TNF, IL-1	Not available
Cardiac-myocyte capillary	Myocytes	Coronary artery ligation	Neuregulin-1, Endothelin-1, nitric oxide	<b>Neuregulin 1</b> (ref. 106) Impaired myocyte regeneration, loss of cardiac protection
Striated-muscle capillary	Pax7 <sup>+</sup> Myf5 <sup>+</sup> muscle satellite cells	Steady state; regeneration; post myotoxin delivery	IGF, HGF, FGF, PDGF-BB	Not available

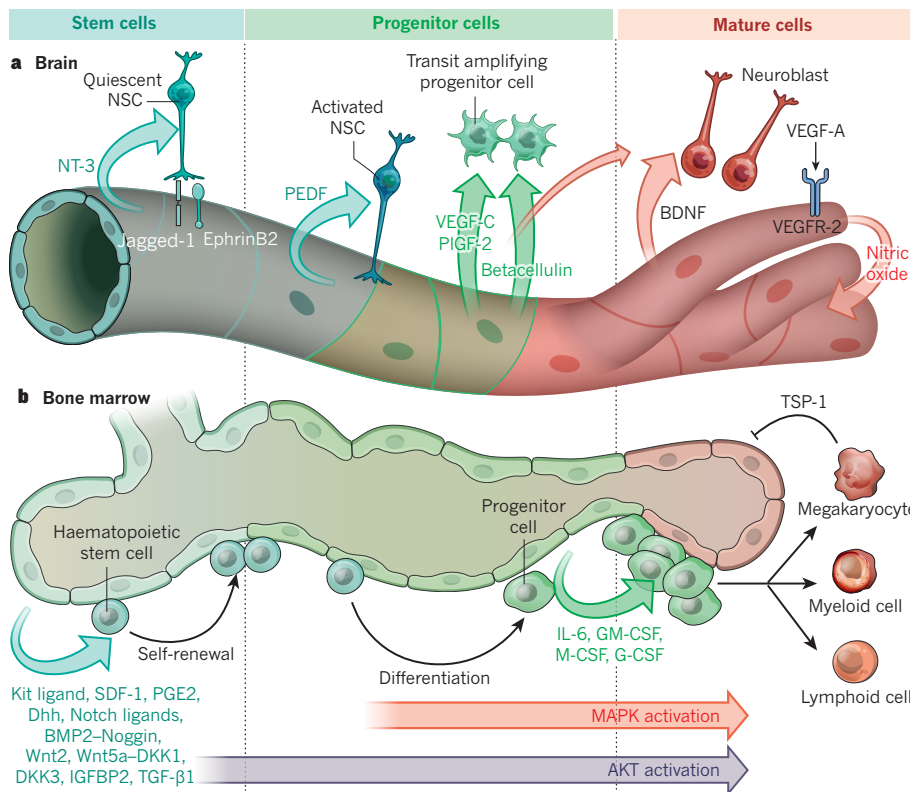
of the endothelial niche<sup>57,58</sup>. Therefore, the endothelial niche is essential not only for sustaining the self-renewal of haematopoietic stem cells, but also for multi-lineage reconstitution (Fig. 2b, Table 1).

Haematopoietic regeneration is orchestrated by the differential production of angiocrine factors that are induced by signalling pathways activated within ECs<sup>45</sup> (Fig. 2b). After myeloablative stress, angiogenic factors such as VEGF-A, VEGF-C, FGF-2 and the angiopoietins upregulate other angiocrine factors, including Jagged-1, through activation of AKT (also known as protein kinase B). Conditional deletion of Jagged-1 in ECs impairs haematopoietic recovery<sup>59</sup>, which suggests that Notch activation prevents the exhaustion of HSPCs. During the angiogenic phase of regeneration, AKT phosphorylation is accompanied by the activation of p42/p44 mitogen-activated protein kinase (MAPK). This triggers the secretion of G-CSF, macrophage colony-stimulating factor (M-CSF), GM-CSF and IL-6 to expand populations of myeloid, megakaryocytic and lymphoid progenitor cells and aid haematopoietic reconstitution<sup>45</sup> (Fig. 2b). In turn, maturing haematopoietic cells produce inhibitory angiogenic factors that prevent excessive sprouting of regenerating sinusoidal vessels. For example, mature megakaryocytes produce TSP-1, which decelerates angiogenesis and shuts off the production of activating angiocrine factors to restore homeostasis<sup>46,60</sup>. Notably, AKT-activated bone marrow ECs, which emulate some of the functions of *in vivo* angiogenic ECs, expand long-term repopulating haematopoietic stem cells under serum-free culture conditions, whereas bone-marrow-derived stromal cells direct stem-cell attrition<sup>44</sup>. Moreover, protection of the haematopoietic microenvironment through transplantation of AKT-activated bone marrow ECs, but not mesenchymal ones, accelerates haematopoietic recovery after lethal irradiation<sup>44</sup>. Therefore, the equilibrium between AKT and MAPK activation regulates multi-lineage haematopoietic recovery.

The contribution of the endothelial niche to steady-state

haematopoiesis was unravelled by studies in which selective deletion in ECs of SDF-1, Kit ligand or Jagged-1 impaired the maintenance of HSPCs<sup>44,61-64</sup>. Several studies have also scrutinized the relative contribution of bone marrow perivascular cells to the homeostasis of HSPCs<sup>65-67</sup>. Because the functions and structural stability of endothelial and non-vascular cells is mutually dependent, the deletion of factors in one niche has the potential to perturb the constituents of the neighbouring one. Therefore, genetic manipulations within the intimately associated endothelial niche and accompanying perivascular cells could have off-target effects, which must be taken into consideration. Nonetheless, the findings of these *in vivo* and reductionist *in vitro* studies suggest that, irrespective of the localization of HSPCs, angiocrine factors that are presented by either arteriolar or sinusoidal endothelial niches have executive functions and serve as 'rheostats' that choreograph haematopoietic stem-cell self-renewal and differentiation during homeostasis and recovery after haematopoietic suppression. Furthermore, these studies demonstrate that some, but not all, heterotypic ECs can support HSPC expansion, which confirms that each organotypic vascular bed is endowed with unique angiocrine attributes that are suitable for stem-cell homeostasis and reconstitution<sup>4,44,46,47</sup>.

During fetal development, inductive signals from ECs<sup>68</sup> specify the development of haemogenic ECs<sup>69,70</sup>. Thus, an endothelial niche could induce the direct conversion of all ECs into haemogenic ones, which give rise to definitive haematopoietic stem cells. Notably, endothelial niche-derived angiocrine signals are essential for the direct conversion of adult ECs into haematopoietic cells. In this approach, adult ECs were transduced with the transcription factors FosB, Gfi1, Runx1 and Spi1 (collectively termed FGFRS). However, FGFRS-transduced ECs failed to convert to engraftable haematopoietic cells unless they were co-cultured in direct contact with ECs<sup>71</sup>. Moreover, co-culture of haematopoietic cells that were derived from mouse and non-human primate pluripotent stem



**Figure 2 | Tissue-specific ECs orchestrate self-renewal and differentiation of stem and progenitor cells by supplying membrane-bound and secreted angiocrine factors.** **a**, Within the V-SVZ and SGZ, brain capillary ECs manufacture specific angiocrine factors to promote the survival of quiescent NSCs (blue region). They also deploy PEDF, VEGF-C (mostly in the SGZ) and PIGF-2 to foster the proliferation of activated NSCs (green). Angiocrine secretion of betacellulin amplifies progenitor transit amplifying cells. During angiogenesis, activation of the VEGF-A–VEGFR-2 pathway induces the production of nitric oxide to upregulate BDNF, which acts with betacellulin to differentiate NSCs into neuroblasts and mature neurons that drive neurogenesis (red). **b**, Under steady-state conditions, a low level of AKT activation in bone marrow ECs stimulates the production of angiocrine factors that maintain and promote self-renewal of haematopoietic stem cells (blue). After myeloablative stress, inflicted by chemotherapy or irradiation, co-activation of AKT and MAPK initiates the expression of angiocrine factors that act on progenitor cells (green) to balance the differentiation of stem cells into lineage-committed progenitors such as myeloid and lymphoid cells. EC-derived Notch ligands prevent exhaustion of haematopoietic stem and progenitor cells. Expression of TSP-1 by maturing megakaryocytes halts ongoing haemangiogenesis to finalize the regeneration process (red).

cells and an endothelial niche enhanced the engraftment of putative haematopoietic cells, in part through the deployment of Notch ligands<sup>72,73</sup>. Thus, angiocrine signals from ECs participate in the specification, development, homeostasis, self-renewal and differentiation of haematopoietic stem cells.

### Angiogenesis and osteogenesis

The skeletal system is constantly being remodelled, yet the ratio of skeletal mass to haematopoietic volume remains constant. Although penetrating bone marrow arteries and sinusoidal vessels provide instructive signals for maintenance of the haematopoietic mass, specialized type H and type L bone capillaries modulate osteogenesis without compromising haematopoiesis<sup>74–76</sup>. Type H vessels that are positive for CD31 and Endomucin regulate osteoblasts and the proliferation of chondrocytes<sup>74,75</sup>. Type L vessels are an extension of type H vessels, and form sinusoidal vessels within the haematopoietic bone cavity. The angiocrine production of Noggin modulates skeletal patterning and ossification (Table 1). Notably, the expression of Noggin is downregulated by Notch signalling, which suggests that crosstalk between osteogenesis and haematopoiesis is conferred through the angiocrine expression of Jagged-1 (ref. 59). Hence, the balanced production of stimulatory and inhibitory angiocrine factors negotiates the allocation of space to bone and haematopoietic compartments.

### Regeneration and fibrosis in the liver

Liver sinusoidal ECs distribute the intrahepatic blood flow between the hepatic artery, the hepatic vein and the portal vein<sup>77</sup>. The tightly regulated hepatic blood flow requires these cells to perform as an adaptable plexus network. Notably, non-lymphatic liver sinusoidal ECs form fenestrated ECs that lack a basement membrane and are negative for CD34, positive for VEGFR-1, VEGFR-2, VEGFR-3, VE-cadherin and the chemokine receptor CXCR7, have low levels or a lack of CD31 and express factor VIII. They also express stabilin-2, CD32b, CD209L and lymphatic vessel endothelial hyaluronin acid receptor 1 (Lyve1) (refs 78–81). A combination of these markers has been used to isolate, characterize and cultivate non-lymphatic liver sinusoidal ECs<sup>81</sup>.

Under homeostatic conditions, angiocrine signals modulate the expansion of hepatocytes by enabling the proliferation of diploid Axin2- and

T-box transcription factor 3 (Tbx3)-positive cells that repopulate the liver<sup>82</sup>. These cells are located next to ECs in the central vein of the liver. Angiocrine production of Wnt2 and Wnt9b from these specialized ECs maintains Axin2 and Tbx3 double-positive hepatocytes that ultimately give rise to distal non-pericentral hepatocytes (Fig. 3a, Table 1). Deletion in ECs from adult mice of the gene *Wntless*, which encodes a specific transporter for Wnt-ligand secretion, depletes hepatic repopulating cells. Furthermore, specific angiocrine expression of the Wnt agonist Rspodin3 by ECs of the central vein of the liver — but not portal-vein ECs — establishes a  $\beta$ -catenin-dependent metabolic zonation<sup>83</sup>. Therefore, the repopulating potential and metabolic zonation of hepatocytes are established by extrinsic angiocrine signals that are derived from an ‘inductive’ central-vein-of-liver endothelial niche.

The angiocrine contribution of liver sinusoidal ECs to liver regeneration can be studied through the surgical resection of up to 70% of the liver’s mass, known as a partial hepatectomy, which induces regeneration throughout the remaining liver. During the initial angiogenesis-independent inductive phase, which occurs 1–4 days after partial hepatectomy, VEGFR-2–AKT-dependent upregulation of transcription factor Id1 in non-proliferating liver sinusoidal ECs stimulates the expression of Wnt2 and hepatocyte growth factor (HGF) (Fig. 3a). Activation of VEGFR-1 on non-angiogenic liver sinusoidal ECs also induces the production of HGF and other pro-hepatic factors, such as heparin-binding EGF (HB-EGF), TGF- $\alpha$  and connective tissue growth factor (CTGF), to drive liver regeneration<sup>79</sup>. On days 4–12 after partial hepatectomy, liver sinusoidal ECs promote proliferative angiogenesis to meet the metabolic demands of the enlarging liver (Fig. 3a). Putative bone-marrow-derived ECs that co-express CD133, CD45 and CD31 and have the capacity to produce HGF can also engraft into populations of regenerating liver sinusoidal ECs, which helps to boost regeneration of the liver<sup>84</sup>.

Liver regeneration has a programmed set point to ensure restoration of the original hepatic mass that is modulated by liver sinusoidal ECs in an angiocrine-dependent manner<sup>85</sup>. During the inductive phase of liver regeneration, Angiopoietin-2 is downregulated in liver sinusoidal ECs, which diminishes the expression of the inhibitory factor TGF- $\beta$ 1. In the angiogenic phase of liver regeneration (4–8 days after partial hepatectomy), Angiopoietin-2 expression returns to normal levels to facilitate

VEGFR-2-dependent angiogenesis (Fig. 3a). Liver regeneration is delayed in adult mice in which Angiopoietin-2–Tie2 signalling is disrupted, which underscores the angiocrine function of Angiopoietin-2 in hepatic regeneration (Table 1).

Liver sinusoidal ECs are capable of either guiding the regeneration of the liver or engendering its pathological recovery by fibrosis, depending on differentially activated signalling pathways. After an acute insult to the liver, upregulation and activation of the SDF-1 receptor CXCR7 induces the angiocrine factors apelin and follistatin-like-1, which promote fibrosis-free repair<sup>86</sup> (Fig. 3a, Table 1). By contrast, chronic injury to the liver by repeated injection of carbon tetrachloride or bile-duct ligation leads to the upregulation of another SDF-1 receptor, CXCR4, and the suppression of CXCR7, which shifts the balance to angiocrine secretion of pro-fibrotic TGF- $\beta$ 1 and BMP2, and leads to scarring. Thus, liver sinusoidal ECs are a cellular node that governs the regeneration, homeostasis and pathology of the liver.

### Regeneration of the lung epithelium

The pulmonary circulation has an expansive capillary surface area that is covered by a thin layer of ECs. A delicate alveolar–capillary membrane is formed by the juxtaposition of these cells and alveolar epithelial cells to mediate gas exchange<sup>87</sup>. This close association facilitates cellular crosstalk to modulate diverse pulmonary physiological processes. Using purification methods to eliminate lymphatic ECs (Box 2), pulmonary capillary ECs are identified by their expression of CD31, CD34, FGF receptor (FGFR)-1, VEGFR-1, and VEGFR-2, and their lack of CD45 (ref. 88).

The contribution of pulmonary capillary ECs to lung regeneration can be demonstrated by removal of the left lung in mammals. Known as a pneumonectomy, the procedure leads to a compensatory growth of lung mass that is driven by the expansion of alveolar epithelial stem and progenitor cells, which include alveolar type (AT)2 epithelial cells<sup>89</sup>. After the pneumonectomy, the propagation of AT2 cells is elicited by MMP-14, which is induced in pulmonary capillary ECs<sup>88</sup>. MMP-14 activates the EGF receptor (EGFR) on alveolar epithelial progenitor cells through its unmasking of the cryptic EGF-like motif in HB-EGF and the  $\gamma$ 2 chain of Laminin-5, and the proliferation of these cells achieves neo-alveogenesis (Fig. 3b, Table 1). Selective conditional deletion of FGFR-1 or VEGFR-2 from adult ECs impairs regeneration of the lung<sup>88</sup> (Table 1). Following the pneumonectomy, recruitment of platelets and delivery of SDF-1 to its receptors on pulmonary capillary ECs could also lead to the upregulation of MMP-14 in ECs<sup>90</sup>. And selective conditional deletion of MMP-14 in adult ECs abrogates regeneration of the alveolar epithelium with negligible impact on vascular perfusion (Table 1). The progenitors of airway basal cells<sup>91</sup> could also proliferate in response to angiocrine MMP-14 induction. FGF-2 and FGF-5 derived from cultured human basal cells stimulate the FGFR-1-dependent production of MMP-14 by pulmonary capillary ECs, which in turn supports the expansion and differentiation of basal cells<sup>92</sup>. Therefore, selective angiocrine upregulation of MMP-14 in pulmonary capillary ECs ignites the propagation of alveolar epithelial cells and basal cell progenitors.

Angiocrine signals also modulate the fate of other types of lung progenitor cell. BMP4 binds the BMP receptor BMPR-1 on ECs, which leads to NFATc1 transcriptional activation of TSP-1 and the differentiation of lung epithelial stem and progenitor cells<sup>93</sup> (Fig. 3b, Table 1). In 3D-homotypic co-cultures, angiocrine-derived TSP-1 stimulates the differentiation of lung epithelial progenitor cells, and in *Tsp1*-deficient mice, the differentiation of progenitor cells into AT1 and AT2 cells is impaired. Collectively, these studies demonstrate that the activation of VEGFR-2, FGFR-1 and BMPR-1 on pulmonary capillary ECs instructs neo-alveogenesis to restore gas-exchange function in the regenerating lungs, which sets the stage for the treatment of emphysema-like disorders with EC transplantation or angiocrine factors<sup>94</sup>.

### The modulation of metabolism

Molecular interactions between ECs and islet cells regulate pancreatic function. During the recuperation of islet cells from chemical injury,

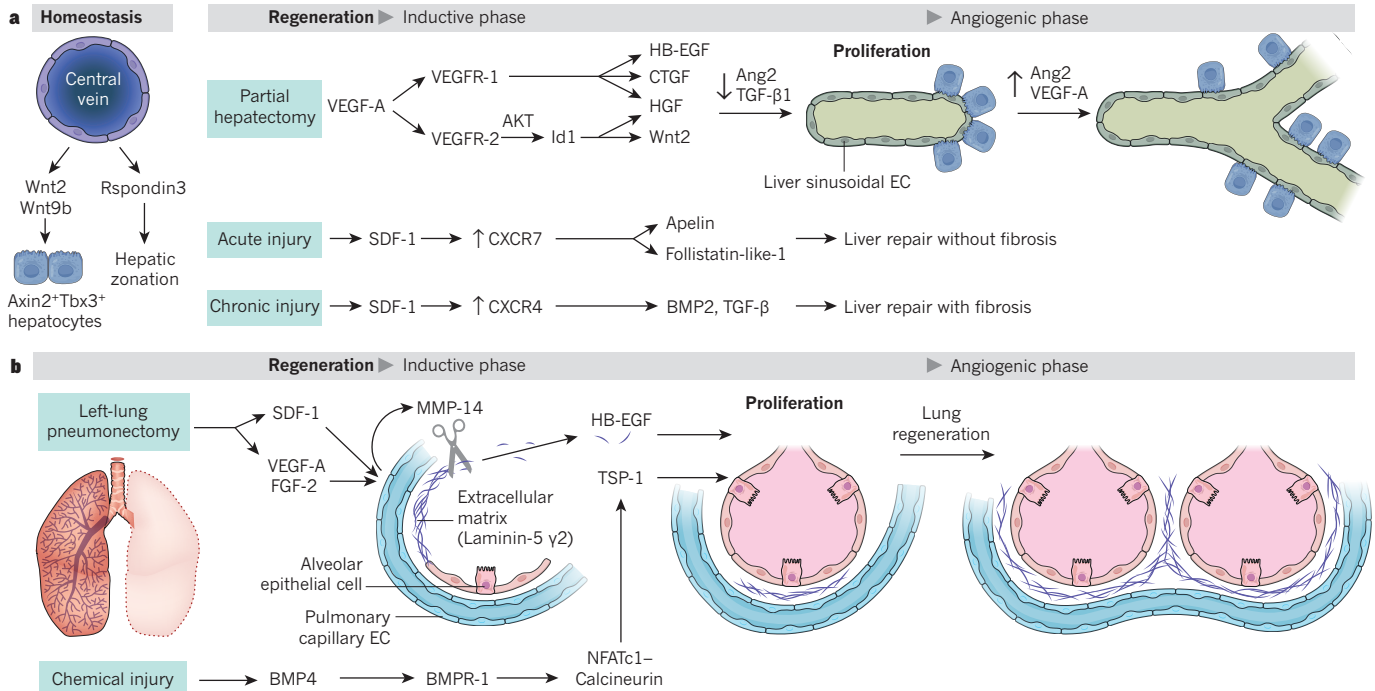
#### BOX 2

## *In vitro* endothelial niches

To propagate pure populations of organ-specific capillary ECs and to avoid their contamination with lymphatic ECs, monoclonal antibodies to EC-specific surface markers are infused intravenously into mice. The animals are killed after 10 minutes to avoid leakage of antibodies into the lymphatic vessels. Next, the intravitaly labelled ECs are isolated through enzymatic digestion of tissues and subsequent flow sorting to ensure the removal of pericytes and smooth-muscle cells<sup>44,43</sup>. Purified ECs are then plated with angiogenic factors in the absence of pituitary extracts and serum to avoid the loss of tissue-specific signatures and to block the transition from endothelial to mesenchymal cells. However, these conditions can support the expansion of angiocrine-competent ECs only in the short term. To remove this hurdle, purified ECs can be transduced with lentiviral vectors that express myristoylated AKT or the non-oncogenic adenoviral gene *E4ORF1* (ref. 43). *E4ORF1* sustains the survival of ECs through specific activation of the AKT–mTOR pathway. ECs that express *E4ORF1* are not transformed and behave like primary ECs that ultimately undergo replicative senescence. This approach enables their long-term cultivation, with high viability in serum-free and xenobiotic-free conditions, which establishes an *ex vivo* platform for endothelial niches that recapitulates organotypic niches<sup>4</sup>. Monolayers of *E4ORF1*<sup>+</sup> ECs sustain their organotypic pro-stem-cell functions, making them superior to ECs that have been immortalized by simian virus 40 large T antigen or polyomavirus middle T antigen, which fail to expand stem cells<sup>45</sup>. Co-culture studies using *E4ORF1*<sup>+</sup> ECs have helped to identify angiocrine pathways that foster the expansion and proliferation of parenchymal and stem cells. So far, *E4ORF1*<sup>+</sup> ECs have not demonstrated any malignant potential and could be adapted to comply with regulatory clinical guidelines. Thus, these engineered ECs provide an ideal platform for interrogating the angiocrine function of ECs in models of organ regeneration and for translating the pro-regenerative therapeutic potential of these cells to the clinical setting.

angiocrine signals drive regeneration of the pancreas and the resolution of diabetes<sup>95,96</sup>. An angiocrine supply of BMP2 and BMP4 is crucial for islet-cell homeostasis<sup>96</sup>. Notably, the deposition of Laminin- $\alpha$ 4 chain by ECs stimulates insulin production by islet cells<sup>97</sup>. Co-culture of islet cells with pancreatic ECs improves the survival of transplanted islet cells<sup>98</sup>. Angiocrine delivery of TSP-1, through the modulation of TGF- $\beta$ 1, promotes islet-cell proliferation<sup>99</sup>. Angiocrine signals from ECs also guide the stage-specific differentiation of pluripotent stem cells into islet cells. For example, EC-derived EGF-like 7 (EGFL7) specifies the fate and proliferation of pancreas and duodenum homeobox (Pdx)1-positive islet-cell progenitors<sup>100</sup>. Therefore, identification of the phenotypic and functional attributes of islet-specific ECs could unravel the angiocrine heterogeneity within pancreatic tissues and lead to new therapeutic strategies for islet-cell production.

Angiogenesis and transdifferentiation of ECs to adipogenic cells modulate thermogenesis and the remodelling of adipose tissue<sup>2,101</sup>. Remarkably, ECs can also adjust metabolism in an angiogenesis-independent manner by deploying certain angiocrine factors. Adipose tissue regulates its mass by monitoring the differentiation of adipocyte stem cells into mature adipocytes. For example, in peroxisome proliferator-activated receptor- $\gamma$  reporter mice, adipose stem cells were shown to embrace the white-fat vasculature, but not the vasculature of other tissues<sup>102</sup>. During adipogenesis, angiocrine signals such as TGF- $\beta$ 1, IL-6, insulin growth factor (IGF)1 and IGF1R modulate the expansion and differentiation of adipocyte stem cells. In turn, adipocytes produce angiogenic factors that fine-tune the induction of angiocrine factors. Deciphering the molecular



**Figure 3 | Angiocrine signals support regeneration of hepatocytes and lung epithelial cells after injury.** **a**, Wnt2 and Wnt9b produced by ECs in the central vein of the liver sustains the steady-state liver mass by replenishing the pool of Axin2<sup>+</sup>Tbx3<sup>+</sup> hepatocytes. Rspodin3 produced by the same ECs establishes hepatic metabolic zonation. After partial hepatectomy, VEGF-A acts through VEGFR-2-mediated AKT activation to induce Id1, which upregulates HGF and Wnt2. It also upregulates HGF, HB-EGF and CTGF through VEGFR-1. Upregulation of these angiocrine factors, together with the downregulation of Angiopoietin-2 (Ang2) and TGF- $\beta$ 1, unleashes angiogenesis-independent hepatocyte proliferation. Angiogenesis is stimulated on hepatic reconstitution that is finalized by the restoration of Ang2 and VEGF-A. After acute injury, activation of CXCR7 by SDF-1 triggers the expression of the anti-fibrotic factors apelin and follistatin-like-1. Chronic injury through persistent activation of

details involved in the crosstalk between ECs and adipocyte stem cells has potential for the treatment of obesity, diabetes and metabolic syndromes.

### Myogenic homeostasis

The idea that an endothelial niche modulates myogenesis stems from studies in which ECs were shown to facilitate the formation of striated muscle that was derived from pluripotent cells<sup>103</sup>. Moreover, satellite striated-muscle precursor cells that express Pax7 and Myf5 are positioned in close proximity to ECs<sup>104</sup>. Co-culture studies showed that ECs in heterotypic cultures support cycling of these satellite cells through the angiocrine production of IGF1, HGF, FGF-2, homodimers of platelet-derived growth factor B-chains (PDGF-BB) and VEGF-A (Table 1). Thus, homeostasis and regeneration of striated-muscle cells could also be coordinated by angiocrine signals.

Likewise, cardiac myocytes are surrounded by the unique capillary and specialized ECs that comprise the endocardium. Cardiac contractility and survival are controlled by EC-derived angiocrine factors, which include Neuregulin-1, endothelin-1 and nitric oxide<sup>105</sup>. Neuregulin-1 is induced and released in response to hypoxic stress by the microvascular endocardial and subendocardial coronary arteries<sup>106</sup> (Table 1). Notably, deletion in adult ECs of the gene that encodes Neuregulin-1 decreases angiocrine-mediated protection of the ischaemic myocardium. Thus, after ischaemic injury, angiocrine factors execute regenerative programs that evoke cardiac repair and sustain myogenic-cell contractility.

### Angiocrine factors as morphogens

Certain angiocrine factors, produced mainly by angiogenic ECs, consist of morphogens and chemokines that provide signals for proper tissue

CXCR4 by SDF-1 and suppression of CXCR7 induces the pro-fibrotic factors BMP2 and TGF- $\beta$ 1. The balance of CXCR4 and CXCR7 activation negotiates between liver regeneration and fibrosis. **b**, After left-lung pneumonectomy, VEGF-A, FGF-2 and SDF-1 switch on the expression of membrane-bound MMP-14. MMP-14 promotes the angiogenesis-independent regeneration of the alveolar epithelium by cleaving HB-EGF from the Laminin-5  $\gamma$ 2-chain to unmask the cryptic EGF-receptor ligand. Recruitment of platelets to the regenerating lung delivers SDF-1 to pulmonary capillary ECs, which upregulates MMP-14 expression through the activation of CXCR4 (not shown). After chemical injury (with bleomycin, for example), BMP4 (through BMPR-1) activates the NFATc1–Calcineurin-dependent transcription of TSP-1 to facilitate epithelial proliferation. The increase in alveolar mass then triggers the angiogenic phase of lung regeneration.

patterning and direct repopulating cells to their predetermined anatomical destinations<sup>107</sup>. During lung development, sprouting capillary ECs guide the patterning of alveolar epithelial cells<sup>108</sup>. Similarly, after hepatotoxin-induced liver injury, the remaining liver sinusoidal ECs provide the cellular roadmap that steers the proper assembly of the hepatic architecture<sup>109</sup>.

The size and activation state of the endothelial niche could also dictate the stem-cell mass and the extent to which an organ achieves its final volume and shape. Injury to ECs can decrease the surface area of the endothelial niche and deplete the stem-cell pool. This raises the possibility that an obligatory expansion in the mass of stem cells demands an equivalent increase in the surface area of the endothelial niche. Indeed, overexpression of VEGF-A in the V-SVZ of the brain increases the size of the endothelial niche, which augments neurogenesis<sup>17,110</sup>. Whether the size of the endothelial niche in other organs is the main rheostat by which the mass of stem cells is set is an intriguing question that deserves further scrutiny.

### Molecular determinants of angiocrine heterogeneity

In response to as yet unknown signals, organotypic ECs acquire unique structural features, such as fenestrations, and are induced to release specific sets of angiocrine factors<sup>4,111</sup>. Notably, their response to various systemic endocrine factors, such as progesterone, is restricted to specific vascular boundaries — namely the uterine vascular bed<sup>112</sup>. The mechanisms through which ECs acquire and maintain tissue-specific attributes could be regulated by extrinsic biophysical cues as well as by the expression of intrinsic cues that include certain transcription factors.

Specific groups of transcription factors, such as those that are encoded

by the homeobox, or *Hox*, genes, are expressed in organotypic ECs<sup>4</sup>. The differential expression of *Hox* genes provides positional identities to vascular zones at defined anatomic sites. In mice, *Hoxa3* and *Hoxc11*, which are associated with anterior and posterior domains, respectively, are differentially expressed in ECs along the body axis<sup>113</sup>. *Hox* gene products might also contribute to organotypic angiocrine expression. For example, *Hoxa9* triggers the expression of MMP-14 and EphrinB4, whereas *Hoxb5*, *Hoxb3* and *Hoxd3* control the positional expression of EphrinA1, VEGFR-2 and type I collagen<sup>114</sup>. It is plausible that extravascular cues, such as the biophysical forces that are imparted by shear stress and matrix elasticity, as well as crosstalk between parenchymal cells and ECs, enforce the expression of tissue-specific transcription factors in microvascular ECs and determine angiocrine heterogeneity.

### Future directions

The emerging idea that organ homeostasis and regeneration are directed by tissue-specific microvascular ECs that function as instructive endothelial niches could be groundbreaking. This is because it focuses future work on what was conceived to be only a passive 'plumbing' system. These observations set the stage for capitalizing on the potential of specialized homotypic ECs as therapeutic drivers that can shepherd the regeneration of functional organs. However, the angiocrine profile of different organ-specific ECs is widely divergent, and a specific angiocrine profile must be established to elicit the desired effect on the local stem-cell population. Notably, the angiogenic and inflammatory states of ECs also play an important part in directing the proper production of angiocrine factors. Moreover, activation of signalling pathways other than AKT and MAPK — specifically, the Jak–Stat pathway — could switch on the expression of unique angiocrine factors. Therefore, to translate the potential of homotypic ECs to the clinical setting, the mechanism by which generic heterotypic ECs adopt tissue-specific angiocrine functions needs to be elucidated. The development of serum-free and xenobiotic-free co-culture platforms, such as E4ORF1<sup>+</sup> ECs (Box 2), enables researchers to molecularly eavesdrop on the crosstalk between non-lymphatic homotypic or heterotypic ECs and tissue-repopulating stem cells. This could uncover the pathways that regulate the expression of tissue-specific angiocrine factors that are transcriptionally and biophysically induced.

In each organ, ECs perform the role of professional niche cells that elaborate a panoply of distinct sets of angiocrine factors that are distributed and delivered with precision to stem cells. Notably, ECs prevent stem cells from becoming exhausted or undergoing excessive self-renewal that could provoke the emergence of detrimental mutations. Our understanding of how stem cells integrate and interpret these myriad endothelial-derived signals to perform their organotypic functions is poor. Nonetheless, published data indicate that the coordinated presentation of a mixture of these angiocrine signals constitutes the long-sought holy grail of stem-cell self-renewal. Notably, the oscillatory release of inhibitory and stimulatory angiocrine factors might be crucial for the safe physiological self-renewal of engraftable stem cells, a process that is unlikely to be replicated by current approaches, in which stem cells are randomly pulsed with a cocktail of growth factors or small molecules. Thus, it is possible to translate the therapeutic potential of ECs for reconstituting pools of stem cells by recreating the appropriate endothelial niche, possibly through the transplantation of organotypic ECs.

The feasibility of this approach has been demonstrated by the intrajugular transplantation of pulmonary capillary ECs into the regenerating alveoli of mice. By supplying the proper doses of angiocrine factors, these engrafted cells drive repopulation of epithelial cells and improve respiratory function<sup>88,90</sup>. Infusion of human cord blood-derived ECs into neonatal mice with hyperoxia-induced alveolar injury also enhances the repair of alveoli<sup>115</sup>. The intravascular transplantation of liver sinusoidal ECs rescues fibrosis-free regeneration of the liver in *Id1*-deficient mice, which are refractory to liver regeneration<sup>81</sup>. In mice, transplantation of ECs also restores liver function after chemical injury<sup>77,84</sup> and it corrects the phenotype of haemophilia A mice<sup>116</sup>. Administration of mouse brain capillary ECs<sup>117–119</sup>, lung ECs<sup>119</sup>, bone marrow ECs<sup>44</sup> or other heterotypic ECs<sup>117–120</sup>

enhances haematopoietic recovery after irradiation. Remarkably, senescent pancreatic islet cells regain their function<sup>121</sup> when transplanted into young diabetic mice, which suggests that the infusion of young ECs could rejuvenate islet-cell function. Engineering clinical-grade tissue-specific or generic ECs<sup>43,122,123</sup> that are capable of engrafting and adapting to an injured microenvironment, as well as producing the proper stoichiometry of angiocrine factors, will augment tissue regeneration and provide guidance for morphogenesis without instigating fibrosis.

It is plausible that the homeostasis and regenerative potential of almost every organ in mammals are regulated by angiocrine factors. Indeed, angiocrine signals might regulate the regenerative potential of stem cells in the hair-follicle bulge, *Lgr5*<sup>+</sup> gastrointestinal repopulating cells, ovarian follicular cells, uterine syncytial cells, chondrocytes and tenocytes, as well as repopulating cells in endocrine organs and epithelial cells in the thymus and urogenital tissues. The development of technologies for isolating non-lymphatic capillary ECs (Box 2) from such sites will enable the angiocrine potential of ECs within these organs to be identified.

Although most of the studies described in this Review focused on angiocrine-derived growth factors and chemokines, the release of EC-derived exosomes and deposition of specific components of the extracellular matrix into the EC basal lamina, as well as the expression of adhesion molecules, such as E-selectin<sup>124</sup>, could also modulate homeostatic and reparative processes. Two notable examples are the release of Laminin- $\alpha 4$  by pancreatic ECs, which induces the production of insulin by islet cells<sup>125</sup>, and MMP-14 generated by lung ECs through unmasking of the cryptic EGF-like motif in HB-EGF that is embedded within the Laminin-5  $\gamma 2$  chain<sup>88</sup>. Similarly, extracellular matrix components that are laid down by organotypic ECs could also modulate tissue homeostasis by refining the affinity of adhesion molecules or by exposing growth factors that are embedded in the extracellular matrix.

Aberrant production of angiocrine factors could constitute the underlying pathogenesis of various conditions, such as cardiovascular or cerebrovascular diseases and the ageing process. Indeed, it is not known whether senescent ECs develop dysfunction in angiocrine production. An important topic not addressed in this Review is the mechanism by which inflammatory and immune cells could alter the normal angiocrine profile of ECs and thereby influence organ repair and scarring. The isolation and molecular profiling of ECs from the tissues of people with various disorders, such as individuals who are experiencing the complications of age-related and inflammatory diseases, could reveal the contribution of perturbed angiocrine signalling to these disorders. Restoration of the angiocrine function of maladapted or senescent vasculature, possibly through the transplantation of engineered ECs, could set the stage for treatments and help to diminish the economic burden of such disorders. ■

Received 9 August; accepted 26 November 2015.

- Carmeliet, P. & Jain, R. K. Molecular mechanisms and clinical applications of angiogenesis. *Nature* **473**, 298–307 (2011).
- Ghesquière, B., Wong, B. W., Kuchnio, A. & Carmeliet, P. Metabolism of stromal and immune cells in health and disease. *Nature* **511**, 167–176 (2014).
- Butler, J. M., Kobayashi, H. & Rafii, S. Instructive role of the vascular niche in promoting tumour growth and tissue repair by angiocrine factors. *Nature Rev. Cancer* **10**, 138–146 (2010).
- Nolan, D. J. *et al.* Molecular signatures of tissue-specific microvascular endothelial cell heterogeneity in organ maintenance and regeneration. *Dev. Cell* **26**, 204–219 (2013).  
**In this article, the authors developed an 'intravital' labelling approach to purify non-lymphatic mouse organ-specific ECs and used molecular profiling to demonstrate the remarkable angiocrine heterogeneity in ECs from various tissues.**
- Matsumoto, K., Yoshitomi, H., Rossant, J. & Zaret, K. S. Liver organogenesis promoted by endothelial cells prior to vascular function. *Science* **294**, 559–563 (2001).
- Lammert, E., Cleaver, O. & Melton, D. Induction of pancreatic differentiation by signals from blood vessels. *Science* **294**, 564–567 (2001).
- Augustin, H. G., Kozian, D. H. & Johnson, R. C. Differentiation of endothelial cells: analysis of the constitutive and activated endothelial cell phenotypes. *Bioessays* **16**, 901–906 (1994).
- Crivellato, E., Nico, B. & Ribatti, D. Contribution of endothelial cells to organogenesis: a modern reappraisal of an old Aristotelian concept. *J. Anat.* **211**, 415–427 (2007).
- Shen, Q. *et al.* Endothelial cells stimulate self-renewal and expand neurogenesis



of neural stem cells. *Science* **304**, 1338–1340 (2004).

**In this paper, the authors demonstrated that heterotypic ECs, but not stromal cells, support the expansion and differentiation of co-cultured NSCs by producing soluble angiocrine factors.**

10. Shen, Q. *et al.* Adult SVZ stem cells lie in a vascular niche: a quantitative analysis of niche cell–cell interactions. *Cell Stem Cell* **3**, 289–300 (2008).
  11. Mirzadeh, Z., Merkle, F. T., Soriano-Navarro, M., Garcia-Verdugo, J. M. & Alvarez-Buylla, A. Neural stem cells confer unique pinwheel architecture to the ventricular surface in neurogenic regions of the adult brain. *Cell Stem Cell* **3**, 265–278 (2008).
  12. Tavazoie, M. *et al.* A specialized vascular niche for adult neural stem cells. *Cell Stem Cell* **3**, 279–288 (2008).
  13. Palmer, T. D., Willhoite, A. R. & Gage, F. H. Vascular niche for adult hippocampal neurogenesis. *J. Comp. Neurol.* **425**, 479–494 (2000).
  14. Leventhal, C., Rafii, S., Rafii, D., Shahar, A. & Goldman, S. A. Endothelial trophic support of neuronal production and recruitment from the adult mammalian subependyma. *Mol. Cell. Neurosci.* **13**, 450–464 (1999).
  15. Ramirez-Castillejo, C. *et al.* Pigment epithelium-derived factor is a niche signal for neural stem cell renewal. *Nature Neurosci.* **9**, 331–339 (2006).
  16. Goldman, S. A. & Chen, Z. Perivascular instruction of cell genesis and fate in the adult brain. *Nature Neurosci.* **14**, 1382–1389 (2011).
  17. Licht, T. & Keshet, E. The vascular niche in adult neurogenesis. *Mech. Dev.* **138**, 56–62 (2015).
  18. Silva-Vargas, V., Crouch, E. E. & Doetsch, F. Adult neural stem cells and their niche: a dynamic duo during homeostasis, regeneration, and aging. *Curr. Opin. Neurobiol.* **23**, 935–942 (2013).
  19. Ottone, C. *et al.* Direct cell–cell contact with the vascular niche maintains quiescent neural stem cells. *Nature Cell Biol.* **16**, 1045–1056 (2014).
  20. Ottone, C. & Parrinello, S. Multifaceted control of adult SVZ neurogenesis by the vascular niche. *Cell Cycle* **14**, 2222–2225 (2015).
  21. Delgado, A. C. *et al.* Endothelial NT-3 delivered by vasculature and CSF promotes quiescence of subependymal neural stem cells through nitric oxide induction. *Neuron* **83**, 572–585 (2014).
  22. Silva-Vargas, V. & Doetsch, F. A new twist for neurotrophins: endothelial-derived NT-3 mediates adult neural stem cell quiescence. *Neuron* **83**, 507–509 (2014).
  23. Andreu-Agulló, C., Morante-Redolat, J. M., Delgado, A. C. & Farinas, I. Vascular niche factor PEDF modulates Notch-dependent stemness in the adult subependymal zone. *Nature Neurosci.* **12**, 1514–1523 (2009).
  24. Gómez-Gaviró, M. V. *et al.* Betacellulin promotes cell proliferation in the neural stem cell niche and stimulates neurogenesis. *Proc. Natl Acad. Sci. USA* **109**, 1317–1322 (2012).
  25. Crouch, E. E., Liu, C., Silva-Vargas, V. & Doetsch, F. Regional and stage-specific effects of prospectively purified vascular cells on the adult V-SVZ neural stem cell lineage. *J. Neurosci.* **35**, 4528–4539 (2015).
  26. Han, J. *et al.* Vascular endothelial growth factor receptor 3 controls neural stem cell activation in mice and humans. *Cell Rep.* **10**, 1158–1172 (2015).
  27. Le Bras, B. *et al.* VEGF-C is a trophic factor for neural progenitors in the vertebrate embryonic brain. *Nature Neurosci.* **9**, 340–348 (2006).
  28. Kokovay, E. *et al.* Adult SVZ lineage cells home to and leave the vascular niche via differential responses to SDF1/CXCR4 signaling. *Cell Stem Cell* **7**, 163–173 (2010).
  29. Snaypan, M. *et al.* Vasculature guides migrating neuronal precursors in the adult mammalian forebrain via brain-derived neurotrophic factor signaling. *J. Neurosci.* **29**, 4172–4188 (2009).
  30. Whitman, M. C., Fan, W., Rella, L., Rodriguez-Gil, D. J. & Greer, C. A. Blood vessels form a migratory scaffold in the rostral migratory stream. *J. Comp. Neurol.* **516**, 94–104 (2009).
  31. Katsimpardi, L. *et al.* Vascular and neurogenic rejuvenation of the aging mouse brain by young systemic factors. *Science* **344**, 630–634 (2014).
  32. Yoshida, S., Sukeno, M. & Nabeshima, Y. A vasculature-associated niche for undifferentiated spermatogonia in the mouse testis. *Science* **317**, 1722–1726 (2007).
  33. Seandel, M. *et al.* Generation of functional multipotent adult stem cells from GPR125<sup>+</sup> germ-line progenitors. *Nature* **449**, 346–350 (2007).
  34. Seandel, M. *et al.* Niche players: spermatogonial progenitors marked by GPR125. *Cell Cycle* **7**, 135–140 (2008).
  35. Kim, J., Seandel, M., Falcioni, I., Wen, D. & Rafii, S. CD34<sup>+</sup> testicular stromal cells support long-term expansion of embryonic and adult stem and progenitor cells. *Stem Cells* **26**, 2516–2522 (2008).
  36. Rafii, S. *et al.* Isolation and characterization of human bone marrow microvascular endothelial cells: hematopoietic progenitor cell adhesion. *Blood* **84**, 10–19 (1994).
  37. Rafii, S. *et al.* Human bone marrow microvascular endothelial cells support long-term proliferation and differentiation of myeloid and megakaryocytic progenitors. *Blood* **86**, 3353–3363 (1995).
- This was the first report of homotypic co-culture of human bone marrow ECs and human hematopoietic cells, and it underscored the capacity of endothelial niches to support the expansion of hematopoietic cells through the production of angiocrine factors in the absence of exogenous factors.**
38. Li, W. *et al.* Primary endothelial cells isolated from the yolk sac and para-aortic splanchnopleura support the expansion of adult marrow stem cells *in vitro*. *Blood* **102**, 4345–4353 (2003).
  39. Li, W., Johnson, S. A., Shelley, W. C. & Yoder, M. C. Hematopoietic stem cell repopulating ability can be maintained *in vitro* by some primary endothelial cells. *Exp. Hematol.* **32**, 1226–1237 (2004).
  40. Chute, J. P., Saini, A. A., Kampen, R. L., Wells, M. R. & Davis, T. A. A comparative study of the cell cycle status and primitive cell adhesion molecule profile of human CD34<sup>+</sup> cells cultured in stroma-free versus porcine microvascular endothelial cell cultures. *Exp. Hematol.* **27**, 370–379 (1999).
  41. Chute, J. P. *et al.* *Ex vivo* culture with human brain endothelial cells increases the SCID-repopulating capacity of adult human bone marrow. *Blood* **100**, 4433–4439 (2002).
  42. Brandt, J. E. *et al.* *Ex vivo* expansion of autologous bone marrow CD34<sup>+</sup> cells with porcine microvascular endothelial cells results in a graft capable of rescuing lethally irradiated baboons. *Blood* **94**, 106–113 (1999).
  43. Seandel, M. *et al.* Generation of a functional and durable vascular niche by the adenoviral *E4ORF1* gene. *Proc. Natl Acad. Sci. USA* **105**, 19288–19293 (2008).
- This report demonstrated that transduction of a non-oncogenic adenoviral *E4ORF1* gene enables the serum-free and xenobiotic-free expansion of primary human ECs, sustaining their angiocrine repertoire.**
44. Poulos, M. G. *et al.* Vascular platform to define hematopoietic stem cell factors and enhance regenerative hematopoiesis. *Stem Cell Reports* **10**, 881–894 (2015).
  45. Kobayashi, H. *et al.* Angiocrine factors from Akt-activated endothelial cells balance self-renewal and differentiation of haematopoietic stem cells. *Nature Cell Biol.* **12**, 1046–1056 (2010).
  46. Butler, J. M. *et al.* Endothelial cells are essential for the self-renewal and repopulation of Notch-dependent hematopoietic stem cells. *Cell Stem Cell* **6**, 251–264 (2010).
- This article employs a serum-free endothelial niche platform to demonstrate that ECs foster the *ex vivo* expansion and self-renewal of Notch-dependent, authentic long-term repopulating hematopoietic stem cells in mice.**
47. Hooper, A. T. *et al.* Engraftment and reconstitution of hematopoiesis is dependent on VEGFR2-mediated regeneration of sinusoidal endothelial cells. *Cell Stem Cell* **4**, 263–274 (2009).
  48. Brenet, F., Kermani, P., Spektor, R., Rafii, S. & Scandura, J. M. TGFβ restores hematopoietic homeostasis after myelosuppressive chemotherapy. *J. Exp. Med.* **210**, 623–639 (2013).
  49. Butler, J. M. *et al.* Development of a vascular niche platform for expansion of repopulating human cord blood stem and progenitor cells. *Blood* **120**, 1344–1347 (2012).
  50. Raynaud, C. M. *et al.* Endothelial cells provide a niche for placental hematopoietic stem/progenitor cell expansion through broad transcriptomic modification. *Stem Cell Res.* **11**, 1074–1090 (2013).
  51. North, T. E. *et al.* Prostaglandin E2 regulates vertebrate hematopoietic stem cell homeostasis. *Nature* **447**, 1007–1011 (2007).
  52. Hoggatt, J. *et al.* Differential stem- and progenitor-cell trafficking by prostaglandin E2. *Nature* **495**, 365–369 (2013).
  53. Himburg, H. A. *et al.* Pleiotrophin regulates the retention and self-renewal of hematopoietic stem cells in the bone marrow vascular niche. *Cell Reports* **2**, 964–975 (2012).
  54. Doan, P. L. *et al.* Epidermal growth factor regulates hematopoietic regeneration after radiation injury. *Nature Med.* **19**, 295–304 (2013).
  55. Heissig, B. *et al.* Recruitment of stem and progenitor cells from the bone marrow niche requires MMP-9 mediated release of Kit-ligand. *Cell* **109**, 625–637 (2002).
- This paper was the first to propose that endothelial and non-vascular niches cooperate by establishing dynamic intertwined niches that facilitate the reconstitution of hematopoiesis and stem-cell transportation through an MMP-9-mediated increase in the bioavailability of soluble Kit ligand.**
56. Kiel, M. J., Yilmaz, O. H., Iwashita, T., Terhorst, C. & Morrison, S. J. SLAM family receptors distinguish hematopoietic stem and progenitor cells and reveal endothelial niches for stem cells. *Cell* **121**, 1109–1121 (2005).
  57. Avecilla, S. T. *et al.* Chemokine-mediated interaction of hematopoietic progenitors with the bone marrow vascular niche is required for thrombopoiesis. *Nature Med.* **10**, 64–71 (2004).
  58. Hamada, T. *et al.* Transendothelial migration of megakaryocytes in response to stromal cell-derived factor 1 (SDF-1) enhances platelet formation. *J. Exp. Med.* **188**, 539–548 (1998).
  59. Poulos, M. G. *et al.* Endothelial Jagged-1 is necessary for homeostatic and regenerative hematopoiesis. *Cell Reports* **4**, 1022–1034 (2013).
  60. Kopp, H. G. *et al.* Thrombospondins deployed by thrombopoietic cells determine angiogenic switch and extent of revascularization. *J. Clin. Invest.* **116**, 3277–3291 (2006).
  61. Ding, L., Saunders, T. L., Enikolopov, G. & Morrison, S. J. Endothelial and perivascular cells maintain hematopoietic stem cells. *Nature* **481**, 457–462 (2012).
- In this article, the authors showed that the angiocrine supply of Kit ligand by ECs is essential for hematopoietic maintenance because the selective conditional deletion of Kit ligand in ECs results in impaired hematopoiesis.**
62. Ding, L. & Morrison, S. J. Hematopoietic stem cells and early lymphoid progenitors occupy distinct bone marrow niches. *Nature* **495**, 231–235 (2013).
  63. Inra, C. N. *et al.* A perisinusoidal niche for extramedullary hematopoiesis in the spleen. *Nature* **527**, 466–471 (2015).
  64. Kimura, Y. *et al.* c-Kit-mediated functional positioning of stem cells to their niches is essential for maintenance and regeneration of adult hematopoiesis. *PLoS ONE* **6**, e26918 (2011).
  65. Kunisaki, Y. *et al.* Arteriolar niches maintain hematopoietic stem cell quiescence. *Nature* **502**, 637–643 (2013).
  66. Morrison, S. J. & Scadden, D. T. The bone marrow niche for hematopoietic stem cells. *Nature* **505**, 327–334 (2014).
  67. Acar, M. *et al.* Deep imaging of bone marrow shows non-dividing stem cells are mainly perisinusoidal. *Nature* **526**, 126–130 (2015).
  68. Nguyen, P. D. *et al.* Hematopoietic stem cell induction by somite-derived endothelial cells controlled by *meox1*. *Nature* **512**, 314–318 (2014).
  69. Medvinsky, A. & Dzierzak, E. Definitive hematopoiesis is autonomously initiated by the AGM region. *Cell* **86**, 897–906 (1996).

70. Chen, M. J., Yokomizo, T., Zeigler, B. M., Dzierzak, E. & Speck, N. A. Runx1 is required for the endothelial to haematopoietic cell transition but not thereafter. *Nature* **457**, 887–891 (2009).
71. Sandler, V. M. *et al.* Reprogramming human endothelial cells to haematopoietic cells requires vascular induction. *Nature* **511**, 312–318 (2014).
72. Gori, J. L. *et al.* Vascular niche promotes hematopoietic multipotent progenitor formation from pluripotent stem cells. *J. Clin. Invest.* **125**, 1243–1254 (2015).
73. Hadland, B. K. *et al.* Endothelium and NOTCH specify and amplify aorta-gonad-mesonephros-derived hematopoietic stem cells. *J. Clin. Invest.* **125**, 2032–2045 (2015).
74. Ramasamy, S. K., Kusumbe, A. P., Wang, L. & Adams, R. H. Endothelial Notch activity promotes angiogenesis and osteogenesis in bone. *Nature* **507**, 376–380 (2014).
75. Ramasamy, S. K., Kusumbe, A. P. & Adams, R. H. Regulation of tissue morphogenesis by endothelial cell-derived signals. *Trends Cell Biol.* **25**, 148–157 (2015).
76. Kusumbe, A. P., Ramasamy, S. K. & Adams, R. H. Coupling of angiogenesis and osteogenesis by a specific vessel subtype in bone. *Nature* **507**, 323–328 (2014).
77. DeLeve, L. D. Liver sinusoidal endothelial cells and liver regeneration. *J. Clin. Invest.* **123**, 1861–1866 (2013).
78. Falkowski, M., Schledzewski, K., Hansen, B. & Goerdts, S. Expression of stabilin-2, a novel fasciclin-like hyaluronan receptor protein, in murine sinusoidal endothelia, avascular tissues, and at solid/liquid interfaces. *Histochem. Cell Biol.* **120**, 361–369 (2003).
79. LeCouter, J. *et al.* Angiogenesis-independent endothelial protection of liver: role of VEGFR-1. *Science* **299**, 890–893 (2003).
80. DeLeve, L. D. Liver sinusoidal endothelial cells in hepatic fibrosis. *Hepatology* **61**, 1740–1746 (2015).
81. Ding, B. S. *et al.* Inductive angiocrine signals from sinusoidal endothelium are required for liver regeneration. *Nature* **468**, 310–315 (2010).
82. Wang, B., Zhao, L., Fish, M., Logan, C. Y. & Nusse, R. Self-renewing diploid Axin2<sup>+</sup> cells fuel homeostatic renewal of the liver. *Nature* **524**, 180–185 (2015).  
**This paper shows that under steady-state conditions, angiocrine deployment of Wnt2 and Wnt9b by ECs of the central vein of the liver enables the generation of diploid repopulating hepatocytes that maintain liver mass.**
83. Rocha, A. S. *et al.* The angiocrine factor Rspn3 is a key determinant of liver zonation. *Cell Reports* **12**, 1757–1764 (2015).
84. Wang, L., Wang, X., Xie, G., Hill, C. K. & DeLeve, L. D. Liver sinusoidal endothelial cell progenitor cells promote liver regeneration in rats. *J. Clin. Invest.* **122**, 1567–1573, (2012).
85. Hu, J. *et al.* Endothelial cell-derived Angiopoietin-2 controls liver regeneration as a spatiotemporal rheostat. *Science* **343**, 416–419 (2014).  
**This report provides genetic evidence to show that angiocrine-derived Angiopoietin-2 induces angiogenesis-independent hepatic proliferation and finalizes angiogenesis-dependent liver regeneration by activating its cognate Tie2 receptor and by regulating TGF- $\beta$ .**
86. Ding, B. S. *et al.* Divergent angiocrine signals from vascular niche balance liver regeneration and fibrosis. *Nature* **505**, 97–102 (2014).
87. Morrisey, E. E. & Hogan, B. L. Preparing for the first breath: genetic and cellular mechanisms in lung development. *Dev. Cell* **18**, 8–23 (2010).
88. Ding, B. S. *et al.* Endothelial-derived angiocrine signals induce and sustain regenerative lung alveolarization. *Cell* **147**, 539–553 (2011).
89. Hogan, B. L. *et al.* Repair and regeneration of the respiratory system: complexity, plasticity, and mechanisms of lung stem cell function. *Cell Stem Cell* **15**, 123–138 (2014).
90. Rafii, S. *et al.* Platelet-derived SDF-1 primes the pulmonary capillary vascular niche to drive lung alveolar regeneration. *Nature Cell Biol.* **17**, 123–136 (2015).
91. Rock, J. R. *et al.* Basal cells as stem cells of the mouse trachea and human airway epithelium. *Proc. Natl Acad. Sci. USA* **106**, 12771–12775 (2009).
92. Ding, B. S., Gomi, K., Rafii, S., Crystal, R. G. & Walters, M. S. Endothelial MMP14 is required for endothelial dependent growth support of human airway basal cells. *J. Cell Sci.* **128**, 2983–2988 (2015).
93. Lee, J. H. *et al.* Lung stem cell differentiation in mice directed by endothelial cells via a BMP4–NFATc1–Thrombospondin-1 axis. *Cell* **156**, 440–455 (2014).
94. Petrache, I. *et al.* Ceramide upregulation causes pulmonary cell apoptosis and emphysema-like disease in mice. *Nature Med.* **11**, 491–498 (2005).
95. Rivas-Carrillo, S. D. *et al.* Endothelial cells promote pancreatic stem cell activation during islet regeneration in mice. *Transplant. Proc.* **43**, 3209–3211 (2011).
96. Talavera-Adame, D. & Dafoe, D. C. Endothelium-derived essential signals involved in pancreas organogenesis. *World J. Exp. Med.* **5**, 40–49 (2015).
97. Nikolova, G. *et al.* The vascular basement membrane: a niche for insulin gene expression and  $\beta$  cell proliferation. *Dev. Cell* **10**, 397–405 (2006).
98. Pan, X. *et al.* Islet graft survival and function: concomitant culture and transplantation with vascular endothelial cells in diabetic rats. *Transplantation* **92**, 1208–1214 (2011).
99. Olerud, J. *et al.* Thrombospondin-1: an islet endothelial cell signal of importance for  $\beta$ -cell function. *Diabetes* **60**, 1946–1954 (2011).
100. Kao, D. I. *et al.* Endothelial cells control pancreatic cell fate at defined stages through EGFL7 signaling. *Stem Cell Reports* **4**, 181–189 (2015).
101. Cao, Y. Angiogenesis and vascular functions in modulation of obesity, adipose metabolism, and insulin sensitivity. *Cell Metab.* **18**, 478–489 (2013).
102. Tang, W. *et al.* White fat progenitor cells reside in the adipose vasculature. *Science* **322**, 583–586 (2008).
103. Shmelkov, S. V. *et al.* Cytokine preconditioning promotes codifferentiation of human fetal liver CD133<sup>+</sup> stem cells into angiomyogenic tissue. *Circulation* **111**, 1175–1183 (2005).
104. Christov, C. *et al.* Muscle satellite cells and endothelial cells: close neighbors and privileged partners. *Mol. Biol. Cell* **18**, 1397–1409 (2007).
105. Noireaud, J. & Andriantsitohaina, R. Recent insights in the paracrine modulation of cardiomyocyte contractility by cardiac endothelial cells. *Biomed. Res. Int.* **2014**, 923805 (2014).
106. Hedhli, N. *et al.* Endothelium-derived neuregulin protects the heart against ischemic injury. *Circulation* **123**, 2254–2262 (2011).  
**In this paper, the authors provide genetic evidence to demonstrate that selective deletion of Neuregulin-1 in ECs from adult mice impairs myogenic repair, which implies that an angiocrine supply of Neuregulin-1 is essential for cardiac myocyte protection and regeneration.**
107. Cleaver, O. & Melton, D. A. Endothelial signaling during development. *Nature Med.* **9**, 661–668 (2003).
108. Lazarus, A. M. *et al.* A perfusion-independent role of blood vessels in determining branching stereotypy of lung airways. *Development* **138**, 2359–2368 (2011).
109. Hoehme, S. *et al.* Prediction and validation of cell alignment along microvessels as order principle to restore tissue architecture in liver regeneration. *Proc. Natl Acad. Sci. USA* **107**, 10371–10376 (2010).
110. Licht, T. *et al.* Reversible modulations of neuronal plasticity by VEGF. *Proc. Natl Acad. Sci. USA* **108**, 5081–5086 (2011).
111. Aird, W. C. Endothelial cell heterogeneity. *Cold Spring Harb. Perspect. Med.* **2**, a006429 (2012).
112. Goddard, L. M. *et al.* Progesterone receptor in the vascular endothelium triggers physiological uterine permeability preimplantation. *Cell* **156**, 549–562 (2014).
113. Prueett, N. D. *et al.* Evidence for Hox-specified positional identities in adult vasculature. *BMC Dev. Biol.* **8**, 93 (2008).
114. Douville, J. M. & Wigle, J. T. Regulation and function of homeodomain proteins in the embryonic and adult vascular systems. *Can. J. Physiol. Pharmacol.* **85**, 55–65 (2007).
115. Alphonse, R. S. *et al.* Existence, functional impairment, and lung repair potential of endothelial colony-forming cells in oxygen-induced arrested alveolar growth. *Circulation* **129**, 2144–2157 (2014).
116. Follenzi, A. *et al.* Transplanted endothelial cells repopulate the liver endothelium and correct the phenotype of hemophilia A mice. *J. Clin. Invest.* **118**, 935–945 (2008).
117. Salter, A. B. *et al.* Endothelial progenitor cell infusion induces hematopoietic stem cell reconstitution *in vivo*. *Blood* **113**, 2104–2107 (2009).
118. Chute, J. P. *et al.* Transplantation of vascular endothelial cells mediates the hematopoietic recovery and survival of lethally irradiated mice. *Blood* **109**, 2365–2372 (2007).
119. Li, B. *et al.* Endothelial cells mediate the regeneration of hematopoietic stem cells. *Stem Cell Res.* **4**, 17–24 (2010).
120. Zachman, D. K. *et al.* Endothelial cells mitigate DNA damage and promote the regeneration of hematopoietic stem cells after radiation injury. *Stem Cell Res.* **11**, 1013–1021 (2013).
121. Almaca, J. *et al.* Young capillary vessels rejuvenate aged pancreatic islets. *Proc. Natl Acad. Sci. USA* **111**, 17612–17617 (2014).
122. Ginsberg, M. *et al.* Efficient direct reprogramming of mature amniotic cells into endothelial cells by ETS factors and TGF $\beta$  suppression. *Cell* **151**, 559–575 (2012).
123. James, D. *et al.* Expansion and maintenance of human embryonic stem cell-derived endothelial cells by TGF $\beta$  inhibition is Id1 dependent. *Nature Biotechnol.* **28**, 161–166 (2010).
124. Winkler, I. G. *et al.* Vascular niche E-selectin regulates hematopoietic stem cell dormancy, self renewal and chemoresistance. *Nature Med.* **18**, 1651–1657 (2012).
125. Nikolova, G., Strilic, B. & Lammert, E. The vascular niche and its basement membrane. *Trends Cell Biol.* **17**, 19–25 (2007).

**Acknowledgements** We acknowledge R. Nachman, D. Hajjar and the late A. Marcus and J. Folkman, whose pioneering work in vascular biology inspired us to uncover the instructive functions of endothelial cells. We thank our colleagues W. Schachterle, M. Poulos, K. Shido, S. Rabbany, P. Kermani, R. Lis, M. Seandel, A. Rafii, D. James, J. Scandura, M. Ginsberg, D. Nolan, G. Davis, Z. Rosenwaks, M. Sadelain, I. Riviere and J. Port for critical review and scientific input. We are grateful to Z. Cao for providing expertise in artwork. We apologize to those scientists whose work we could not highlight owing to space limitations. S.R. was supported by the Ansbary Stem Cell Institute, the Empire State Stem Cell Board and New York State Department of Health (C026878, C028117 and C029156), the Howard Hughes Medical Institute, the US National Heart, Lung, and Blood Institute (R01HL115128, R01HL119872 and R01HL128158), the US National Cancer Institute (U54CA163167), the US National Institute of Diabetes and Digestive and Kidney Diseases (R01DK095039) and the Qatar National Priorities Research Program (NPRP 6-131-3-268). J.M.B. was supported by the Ansbary Stem Cell Institute, an American Society of Hematology Scholar Award, an American Federation for Aging Research grant and a Leukemia and Lymphoma Society Quest for Cures award. B.-S.D. was supported by the Ansbary Stem Cell Institute and the American Heart Association (12SDG1213004).

**Author Information** Reprints and permissions information is available at [www.nature.com/reprints](http://www.nature.com/reprints). The authors declare competing financial interests: see [go.nature.com/717e9x](http://go.nature.com/717e9x). Readers are welcome to comment on the online version of this paper at [go.nature.com/717e9x](http://go.nature.com/717e9x). Correspondence should be addressed to S.R. ([srafii@med.cornell.edu](mailto:srafii@med.cornell.edu)), J.M.B. ([jmb2009@med.cornell.edu](mailto:jmb2009@med.cornell.edu)) or B.-S.D. ([bid2004@med.cornell.edu](mailto:bid2004@med.cornell.edu)).