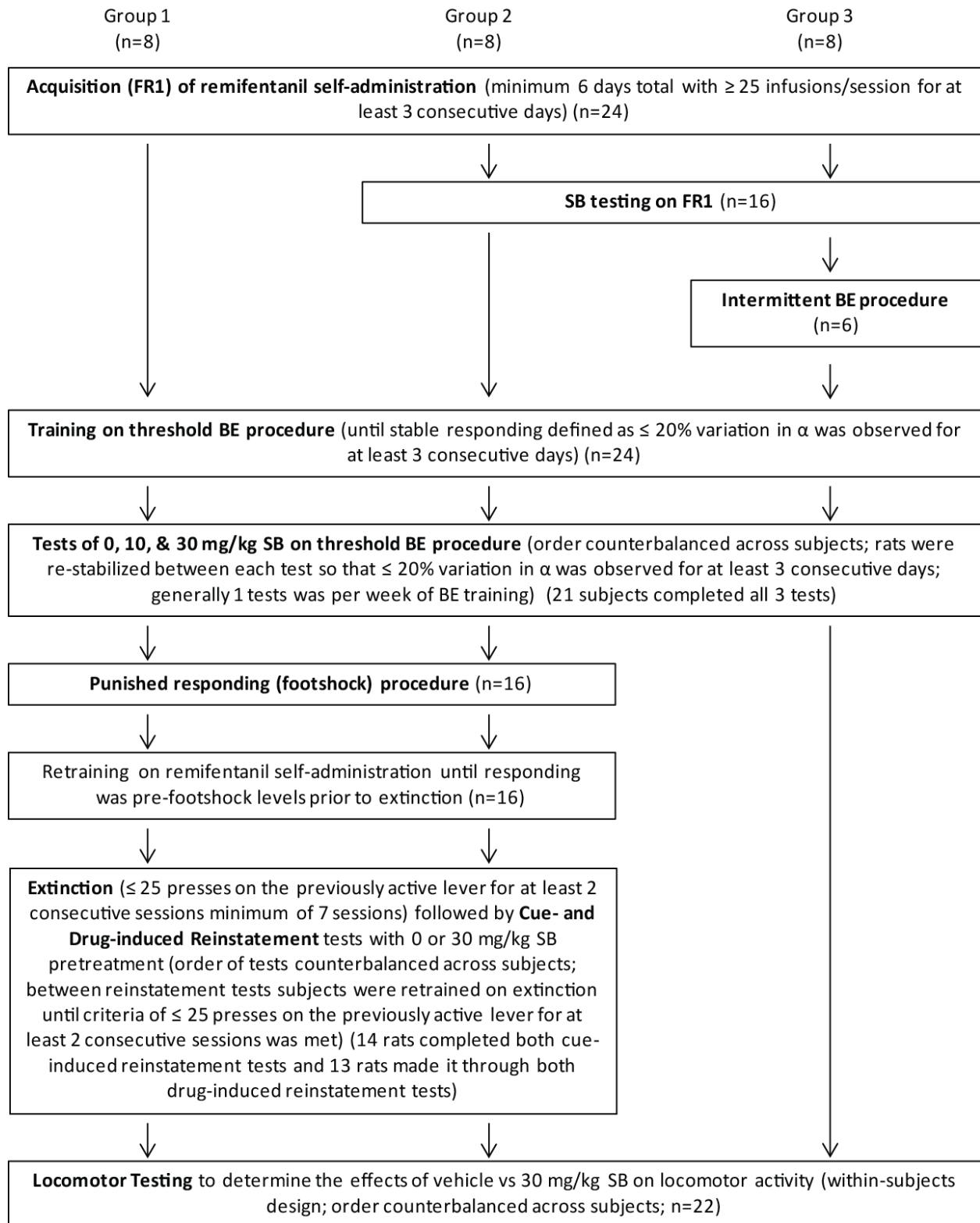
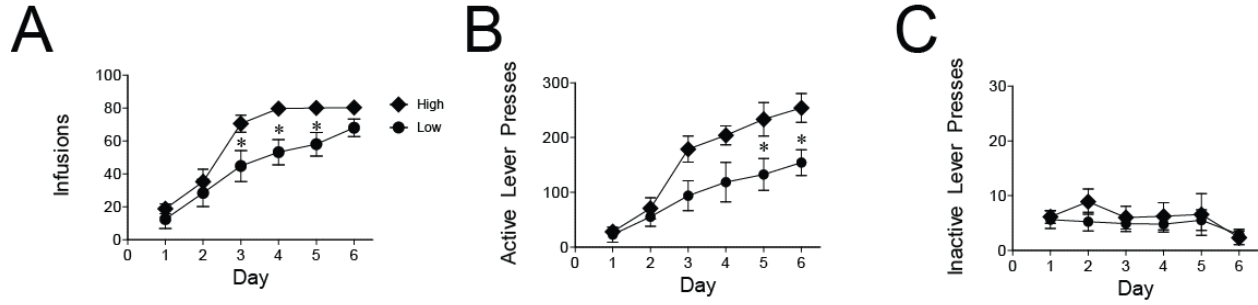


### Supplemental Figure 1



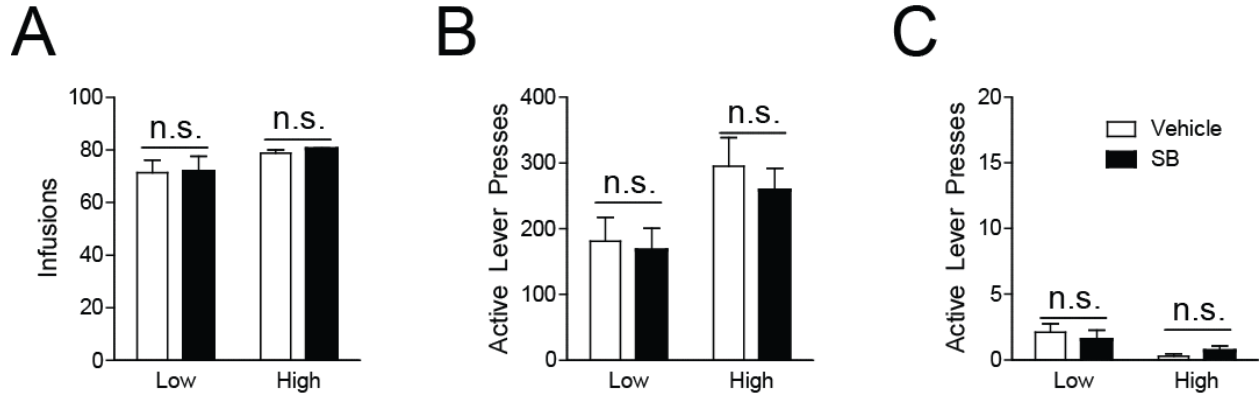
**Supplemental Figure 1. Experimental Timeline.** Three groups of rats were independently run in this study as shown above. Detailed descriptions of all training and testing stages are found in the methods section of the paper. Approximately equal numbers of high and low takers were observed throughout the three groups. The minor attrition in number of subjects throughout the study was due to loss of catheter patency in a few rats, and one rat that acquired an infection was excluded during extinction.

Supplemental Figure 2



**Supplemental Figure 2. Individual differences in acquisition of FR1 responding for remifentanyl.** Acquisition data were re-analyzed based upon whether subjects were classified as low takers or high takers in the subsequent behavioral-economic threshold procedure. A) High takers earned more infusions during sessions 3-5. B) High takers pressed the active lever more than low takers during the final two sessions. C) Low and high takers had similarly low levels of responding on the inactive lever.

Supplemental Figure 3



**Supplemental Figure 3. Effects of Ox1R antagonism on FR1 responding for remifentanyl in low and high takers.** A-C) SB was equally ineffective at reducing number of infusions earned (A) as well as active (B) and inactive (C) lever presses.