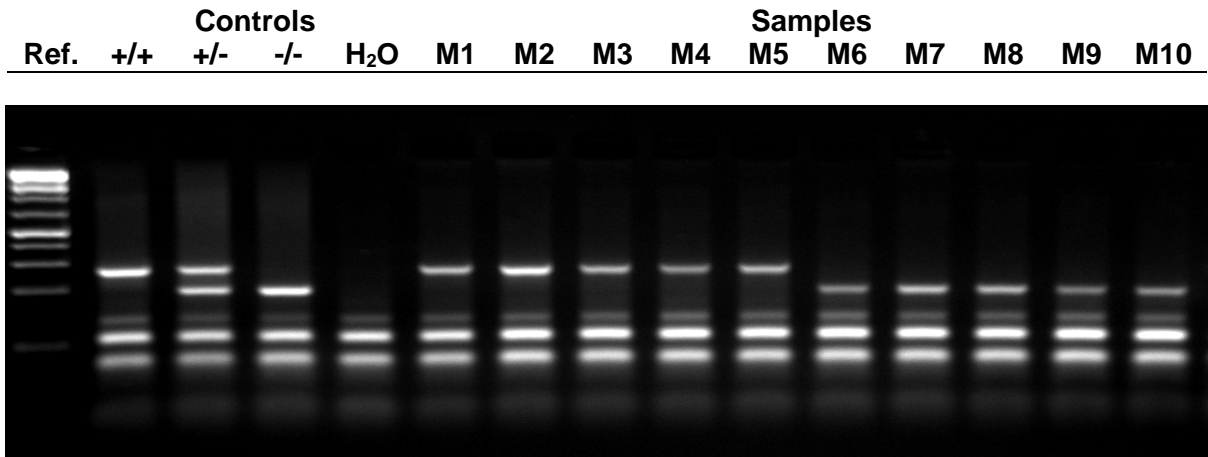


SUPPLEMENTAL MATERIAL

Supplemental Figure and Figure Legend

Supplemental Figure S1

A



B

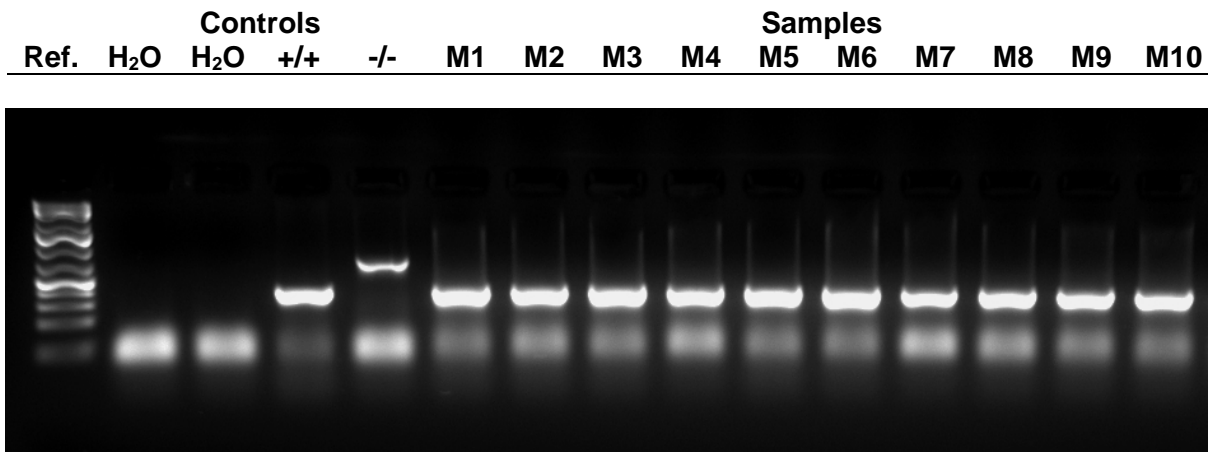


Fig S1. Successful bone marrow transplantation from *WT* and *Dgat1*^{-/-} donors to *Ldlr*^{-/-} recipient mice. Four weeks post-transplantation, peripheral blood samples were used for (A) *Dgat1* and (B) *Ldlr* genotyping. PCR products were analyzed by agarose gel electrophoresis. Images show representative gels for mice transplanted with *WT* or *Dgat1*^{-/-} bone marrow, respectively.