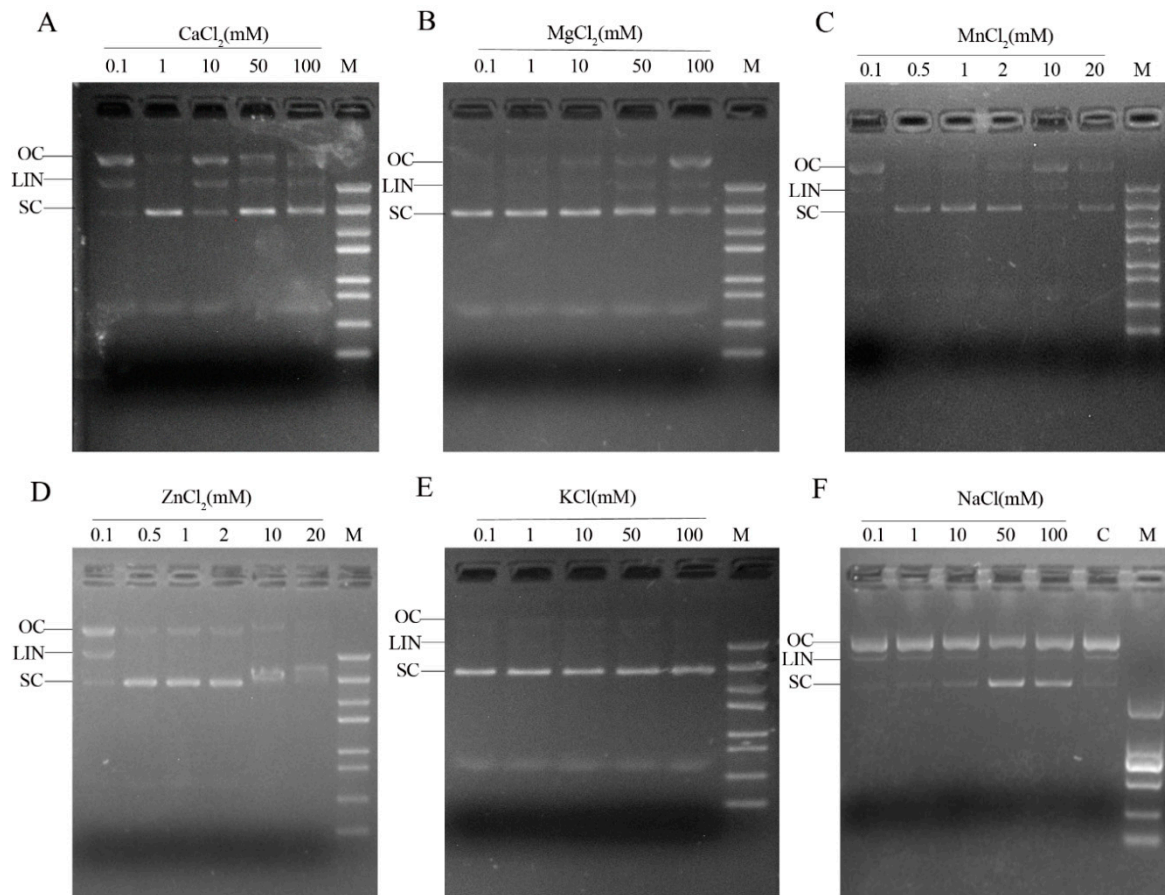


## Supplementary Materials: *Mycoplasma bovis* MBOV\_RS02825 Encodes a Secretory Nuclease Associated with Cytotoxicity

Hui Zhang, Gang Zhao, Yusi Guo, Harish Menghwar, Yingyu Chen, Huanchun Chen and Aizhen Guo



**Figure S1.** Effect of metal ions on rMbovNase activity. (A–F) represent effect of CaCl<sub>2</sub>, MgCl<sub>2</sub>, MnCl<sub>2</sub>, ZnCl<sub>2</sub>, KCl, and NaCl presence on rMbovNase activity respectively. For all the groups, plasmid DNA (1 µg) was incubated with rMbovNase in the presence of CaCl<sub>2</sub>, MgCl<sub>2</sub>, MnCl<sub>2</sub>, ZnCl<sub>2</sub>, KCl, and NaCl at different concentrations from 0.1 to 20 mM indicated above each lane and the digestion effects were compared. Reactions were stopped by adding EDTA solution. Test samples were resolved on 1% agarose gel. Open-circle (OC), linear (LIN) and supercoiled (SC) forms of plasmid DNA are indicated on the left of each picture. The untreated with any metal ions was negative control (Lane C).