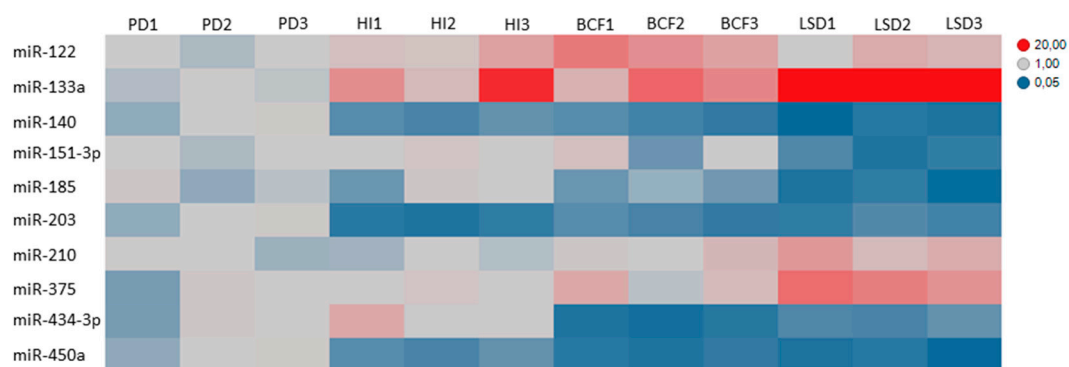


## Supplementary Materials: Characterization of Micro-RNA Changes during Progression of Type 2 Diabetes in Zucker Diabetic Fatty Rats

Denis Delic, Claudia Eisele, Ramona Schmid, Gerd Luippold, Eric Mayoux and Rolf Grempler



**Figure S1.** Heatmap of significantly altered miRNAs over the course of disease progression: pre-diabetes (PD), hyperinsulinemia (HI),  $\beta$  cell failure (BCF), and late-stage diabetes (LSD). Colors indicate increase (**red**; fold-change) or decrease (**blue**; fold-change) of miRNA levels compared to the pre-diabetes time point (Fold-change range from 20-fold increase (20) to 20-fold decrease (0.05)).