

Evaluation of the International Prognostic Score (IPS-7) and a Simpler Prognostic Score (IPS-3) for Advanced Hodgkin Lymphoma in the Modern Era

Journal:	<i>British Journal of Haematology</i>
Manuscript ID:	Draft
Manuscript Type:	Ordinary Papers
Date Submitted by the Author:	n/a
Complete List of Authors:	<p>Diefenbach, Catherine; NYU Langone School of Medicine, NYU Perlmutter Cancer Center Li, Hailun; Dana Farber Cancer Institute,, Statistics Hong, Fangxin; Dana-Farber Cancer Institute, Biostatistics Gordon, Leo; Robert H Lurie Comprehensive Cancer Center of Northwestern University, Hematology-Oncology Fisher, Richard; Temple School of Medicine, Fox Chase Cancer Center Bartlett, Nancy; Washington University, Division of Hematology/Oncology Crump, Michael; University Health Network, Division of Medical Oncology and Hematology Gascoyne, Randy; British Columbia Cancer Agency and the BC Cancer Research Centre, Center for Lymphoid Cancer Wagner, Henry; Pennsylvania State Cancer Institute, Radiation Oncology Stiff, Patrick; Loyola University Medical Center, Medical Oncology Cheson, Bruce; Georgetown University Hospital, Hematology-Oncology Stewart, Douglas; Tom Baker Cancer Centre, Hematology-Oncology Kahl, Brad; University of Wisconsin, Medicine Friedberg, Jonathan; James P. Wilmot Cancer Center, University of Rochester, 601 Elmwood Ave, Box 704, Rochester, NY, 14642, USA, University of Rochester Blum, Kristie; The Ohio State University, Division of Hematology Oncology Habermann, Thomas; Mayo Clinic, Div. Hematology Tuscano, Joseph; University of California, Davis Cancer Center Advani, Ranjana; Stanford University School of Medicine, Medicine Hoppe, Richard; Stanford University, Radiation Oncology Horning, Sandra; Genentech Inc., Global Head Clinical Hematology Oncology</p>
Key Words:	Hodgkin lymphoma, IPS, Prognostic score, ABVD, Stanford V

1
2
3
4
5
6
7
8
9
10
11
12
13
14
15
16
17
18
19
20
21
22
23
24
25
26
27
28
29
30
31
32
33
34
35
36
37
38
39
40
41
42
43
44
45
46
47
48
49
50
51
52
53
54
55
56
57
58
59
60

For Peer Review

Evaluation of the International Prognostic Score (IPS-7) and a Simpler Prognostic Score (IPS-3) for Advanced Hodgkin Lymphoma in the Modern Era

Short title for running head: A streamlined prognostic index for Hodgkin lymphoma (52 characters)

Authors:

C. S. Diefenbach¹, H. Li², F. Hong², L. I. Gordon³, R. I. Fisher⁴, N. L. Bartlett⁵, M. Crump⁶, R. D. Gascoyne⁷, H. Wagner, Jr.⁸, P. J. Stiff⁹, B. D. Cheson¹⁰, D. A. Stewart¹¹, B. S. Kahl¹², J. W. Friedberg¹³, K. A. Blum¹⁴, T. M. Habermann¹⁵, J. M. Tuscano¹⁶, R. T. Hoppe¹⁷, S. J. Horning¹⁸, R. H. Advani¹⁷

Author Affiliations:

¹New York University, New York, New York; ²Dana Farber Cancer Institute, Boston, Massachusetts; ³Robert H. Lurie Comprehensive Cancer Center of Northwestern University, Chicago Illinois; ⁴Fox Chase Cancer Center, Philadelphia, Pennsylvania; ⁵Washington University School of Medicine, St. Louis, Missouri; ⁶Princess Margaret Cancer Centre, Toronto, Canada; ⁷British Columbia Cancer Agency, Vancouver, Canada; ⁸Penn State Cancer Institute, Hershey, Pennsylvania; ⁹Loyola University Medical Center, Maywood, Illinois; ¹⁰Georgetown University Hospital, Washington, District of Columbia; ¹¹Tom Baker Cancer Centre, Calgary, Canada; ¹²University of Wisconsin, Madison, Wisconsin; ¹³University of Rochester, Rochester, New York; ¹⁴Ohio State University, Columbus, Ohio; ¹⁵Mayo Clinic, Rochester, Minnesota; ¹⁶University of California, Davis Cancer Center, Sacramento, California; ¹⁷Stanford University, Stanford, California; ¹⁸Genentech, Inc., South San Francisco, California

Address correspondence: Dr. Catherine Diefenbach; NYU Perlmutter Cancer Center, 240 East 38th Street, 19th Floor, New York, NY 10016. Phone: (212) 731-5670. Email: catherine.diefenbach@nyumc.org

Scientific section designation: Research Paper

Abstract word count: 200 words

MS Word count words 2,688 words

Figures/tables: (3/2); **References:** 36

Supplementary materials: 1 supplementary figure, 3 supplementary tables

KEY POINTS

- **Analysis of 854 advanced HL patients treated on E2496 confirms that the IPS-7 has decreased prognostic discrimination in the contemporary era.**
- **A simpler prognostic score, the IPS-3, outperformed the IPS-7 and may provide a more accurate framework for risk prediction.**

ABSTRACT

The international prognostic score (IPS-7) is the most commonly used risk stratification tool for advanced Hodgkin lymphoma (HL), however recent studies suggest the IPS-7 is less discriminating due to improved outcomes with contemporary therapy. We evaluated the seven variables for IPS-7 recorded at study entry for 854 patients enrolled on E2496. Univariate and multivariate Cox models were used to assess their predictive ability for freedom from progression (FFP) and overall survival (OS). The IPS-7 remained prognostic however its predictive range has narrowed. On multivariate analysis 2 factors (age, stage) remained significant for FFP and 3 factors (age, stage, hemoglobin) for OS. An alternative prognostic index, the IPS-3, was constructed using age, stage, and hemoglobin, which provided 4 distinct risk groups [FFP ($p=0.0001$) and OS ($p<0.0001$)]. IPS-3 outperformed the IPS-7 on risk prediction for both FFP and OS by model fit and discrimination criteria. Using reclassification calibration 18% of IPS-7 low risk patients were re-classified as intermediate risk and 13% of IPS-7 intermediate risk patients as low risk. For patients with advanced HL, the IPS-3 may provide a simpler and more accurate framework for risk assessment in the modern era. Validation of these findings in other large data sets is planned.

KEYWORDS

Hodgkin lymphoma, IPS, prognostic score, ABVD, Stanford V

INTRODUCTION

Hodgkin lymphoma (HL) is the most common lymphoid neoplasm in young patients, with a median age at diagnosis of 38 years, and approximately 40% of patients under age 35¹. In the current era, more than 75% of patients are cured with contemporary frontline therapy²⁻⁵. Despite this success, patients with primary refractory disease or those who relapse after salvage strategies continue to have poor outcomes⁶. The most widely utilized clinical index to assign upfront risk in HL is the International Prognostic Score (IPS), a retrospectively developed clinical model with a primary endpoint of freedom from progression (FFP)⁷. The IPS was constructed in 1998 based on outcomes from approximately 4,600 patients treated on protocols for advanced stage HL prior to 1992. Complete data were available on 1,600 of these patients, and were used to fit the final Cox model. While the majority of patients had advanced stage (45% stage III, 43% stage IV), approximately 13% of patients were classified as stage I or II, and 22% had bulky mediastinal presentation. Therapy was variable and while the majority of patients (75%) were treated with at least 4 cycles of doxorubicin containing chemotherapy, 20% received mechlorethamine, oncovin, procarbazine, and prednisone (MOPP) or a similar regimen, which have been proved to be inferior to ABVD or other doxorubicin-containing regimens. Seven clinical parameters determined to be significant on multivariate analysis were independently associated with adverse clinical outcome; male sex, age>45 years, stage IV disease, hemoglobin <10.5g/dl, white blood count (wbc) $\geq 15 \times 10^9/L$, lymphocyte count < $0.6 \times 10^9/L$ or <8% of total WBC, and albumin < 40g/L. On the basis of the number of factors present at diagnosis the IPS identified 6 subgroups of patients with 5 year FFP ranging from 42% to 84%, and overall survival (OS) of 56%-89%⁷.

Since the development of the IPS, there have been considerable improvements in therapy and supportive care in both the front line and relapsed setting, resulting in significant improvement in

1
2
3 outcome⁸⁻¹¹. Additionally newer imaging modalities i.e. PET/CT may allow for more precise
4
5 staging and response assessment during treatment¹²⁻¹⁶.
6
7

8
9 Although the IPS continues to be widely used, its utility for patients treated with contemporary
10 regimens has been challenged. A retrospective analysis from British Columbia Cancer Agency
11 (BCCA) in patients treated between 1980 and 2010 with ABVD, or an equivalent regimen
12 reported an improvement in outcome and a diminished predictive range of the IPS-7 with FFP
13 ranging from 62% to 88% and OS ranging from 67% to 98%¹⁷. To assess the utility of the
14 individual IPS-7 factors in the contemporary era we analyzed data from a prospective phase III
15 randomized trial ECOG 2496, a study that evaluated ABVD versus Stanford V in advanced HL².
16
17
18
19
20
21
22
23

24 PATIENTS AND METHODS

25 Patient Population

26
27
28
29
30
31
32
33
34
35
36
37
38
39
40
41
42
43
44
45
46
47
48
49
50
51
52
53
54
55
56
57
58
59
60
61
62
63
64
65
66
67
68
69
70
71
72
73
74
75
76
77
78
79
80
81
82
83
84
85
86
87
88
89
90
91
92
93
94
95
96
97
98
99
100
101
102
103
104
105
106
107
108
109
110
111
112
113
114
115
116
117
118
119
120
121
122
123
124
125
126
127
128
129
130
131
132
133
134
135
136
137
138
139
140
141
142
143
144
145
146
147
148
149
150
151
152
153
154
155
156
157
158
159
160
161
162
163
164
165
166
167
168
169
170
171
172
173
174
175
176
177
178
179
180
181
182
183
184
185
186
187
188
189
190
191
192
193
194
195
196
197
198
199
200
201
202
203
204
205
206
207
208
209
210
211
212
213
214
215
216
217
218
219
220
221
222
223
224
225
226
227
228
229
230
231
232
233
234
235
236
237
238
239
240
241
242
243
244
245
246
247
248
249
250
251
252
253
254
255
256
257
258
259
260
261
262
263
264
265
266
267
268
269
270
271
272
273
274
275
276
277
278
279
280
281
282
283
284
285
286
287
288
289
290
291
292
293
294
295
296
297
298
299
300
301
302
303
304
305
306
307
308
309
310
311
312
313
314
315
316
317
318
319
320
321
322
323
324
325
326
327
328
329
330
331
332
333
334
335
336
337
338
339
340
341
342
343
344
345
346
347
348
349
350
351
352
353
354
355
356
357
358
359
360
361
362
363
364
365
366
367
368
369
370
371
372
373
374
375
376
377
378
379
380
381
382
383
384
385
386
387
388
389
390
391
392
393
394
395
396
397
398
399
400
401
402
403
404
405
406
407
408
409
410
411
412
413
414
415
416
417
418
419
420
421
422
423
424
425
426
427
428
429
430
431
432
433
434
435
436
437
438
439
440
441
442
443
444
445
446
447
448
449
450
451
452
453
454
455
456
457
458
459
460
461
462
463
464
465
466
467
468
469
470
471
472
473
474
475
476
477
478
479
480
481
482
483
484
485
486
487
488
489
490
491
492
493
494
495
496
497
498
499
500
501
502
503
504
505
506
507
508
509
510
511
512
513
514
515
516
517
518
519
520
521
522
523
524
525
526
527
528
529
530
531
532
533
534
535
536
537
538
539
540
541
542
543
544
545
546
547
548
549
550
551
552
553
554
555
556
557
558
559
560
561
562
563
564
565
566
567
568
569
570
571
572
573
574
575
576
577
578
579
580
581
582
583
584
585
586
587
588
589
590
591
592
593
594
595
596
597
598
599
600
601
602
603
604
605
606
607
608
609
610
611
612
613
614
615
616
617
618
619
620
621
622
623
624
625
626
627
628
629
630
631
632
633
634
635
636
637
638
639
640
641
642
643
644
645
646
647
648
649
650
651
652
653
654
655
656
657
658
659
660
661
662
663
664
665
666
667
668
669
670
671
672
673
674
675
676
677
678
679
680
681
682
683
684
685
686
687
688
689
690
691
692
693
694
695
696
697
698
699
700
701
702
703
704
705
706
707
708
709
710
711
712
713
714
715
716
717
718
719
720
721
722
723
724
725
726
727
728
729
730
731
732
733
734
735
736
737
738
739
740
741
742
743
744
745
746
747
748
749
750
751
752
753
754
755
756
757
758
759
760
761
762
763
764
765
766
767
768
769
770
771
772
773
774
775
776
777
778
779
780
781
782
783
784
785
786
787
788
789
790
791
792
793
794
795
796
797
798
799
800
801
802
803
804
805
806
807
808
809
810
811
812
813
814
815
816
817
818
819
820
821
822
823
824
825
826
827
828
829
830
831
832
833
834
835
836
837
838
839
840
841
842
843
844
845
846
847
848
849
850
851
852
853
854
855
856
857
858
859
860
861
862
863
864
865
866
867
868
869
870
871
872
873
874
875
876
877
878
879
880
881
882
883
884
885
886
887
888
889
890
891
892
893
894
895
896
897
898
899
900
901
902
903
904
905
906
907
908
909
910
911
912
913
914
915
916
917
918
919
920
921
922
923
924
925
926
927
928
929
930
931
932
933
934
935
936
937
938
939
940
941
942
943
944
945
946
947
948
949
950
951
952
953
954
955
956
957
958
959
960
961
962
963
964
965
966
967
968
969
970
971
972
973
974
975
976
977
978
979
980
981
982
983
984
985
986
987
988
989
990
991
992
993
994
995
996
997
998
999
1000

Between 1996 and 2006, 854 patients were enrolled on the North American Intergroup trial E2496, a Randomized Phase III Trial of ABVD versus Stanford V in Locally Extensive and Advanced Stage Hodgkin Lymphoma². As IPS was one of the stratification factors used in the trial, all 7 IPS variables were recorded at the time of study entry.

40 Statistical Analysis

41
42
43
44
45
46
47
48
49
50
51
52
53
54
55
56
57
58
59
60
61
62
63
64
65
66
67
68
69
70
71
72
73
74
75
76
77
78
79
80
81
82
83
84
85
86
87
88
89
90
91
92
93
94
95
96
97
98
99
100
101
102
103
104
105
106
107
108
109
110
111
112
113
114
115
116
117
118
119
120
121
122
123
124
125
126
127
128
129
130
131
132
133
134
135
136
137
138
139
140
141
142
143
144
145
146
147
148
149
150
151
152
153
154
155
156
157
158
159
160
161
162
163
164
165
166
167
168
169
170
171
172
173
174
175
176
177
178
179
180
181
182
183
184
185
186
187
188
189
190
191
192
193
194
195
196
197
198
199
200
201
202
203
204
205
206
207
208
209
210
211
212
213
214
215
216
217
218
219
220
221
222
223
224
225
226
227
228
229
230
231
232
233
234
235
236
237
238
239
240
241
242
243
244
245
246
247
248
249
250
251
252
253
254
255
256
257
258
259
260
261
262
263
264
265
266
267
268
269
270
271
272
273
274
275
276
277
278
279
280
281
282
283
284
285
286
287
288
289
290
291
292
293
294
295
296
297
298
299
300
301
302
303
304
305
306
307
308
309
310
311
312
313
314
315
316
317
318
319
320
321
322
323
324
325
326
327
328
329
330
331
332
333
334
335
336
337
338
339
340
341
342
343
344
345
346
347
348
349
350
351
352
353
354
355
356
357
358
359
360
361
362
363
364
365
366
367
368
369
370
371
372
373
374
375
376
377
378
379
380
381
382
383
384
385
386
387
388
389
390
391
392
393
394
395
396
397
398
399
400
401
402
403
404
405
406
407
408
409
410
411
412
413
414
415
416
417
418
419
420
421
422
423
424
425
426
427
428
429
430
431
432
433
434
435
436
437
438
439
440
441
442
443
444
445
446
447
448
449
450
451
452
453
454
455
456
457
458
459
460
461
462
463
464
465
466
467
468
469
470
471
472
473
474
475
476
477
478
479
480
481
482
483
484
485
486
487
488
489
490
491
492
493
494
495
496
497
498
499
500
501
502
503
504
505
506
507
508
509
510
511
512
513
514
515
516
517
518
519
520
521
522
523
524
525
526
527
528
529
530
531
532
533
534
535
536
537
538
539
540
541
542
543
544
545
546
547
548
549
550
551
552
553
554
555
556
557
558
559
560
561
562
563
564
565
566
567
568
569
570
571
572
573
574
575
576
577
578
579
580
581
582
583
584
585
586
587
588
589
590
591
592
593
594
595
596
597
598
599
600
601
602
603
604
605
606
607
608
609
610
611
612
613
614
615
616
617
618
619
620
621
622
623
624
625
626
627
628
629
630
631
632
633
634
635
636
637
638
639
640
641
642
643
644
645
646
647
648
649
650
651
652
653
654
655
656
657
658
659
660
661
662
663
664
665
666
667
668
669
670
671
672
673
674
675
676
677
678
679
680
681
682
683
684
685
686
687
688
689
690
691
692
693
694
695
696
697
698
699
700
701
702
703
704
705
706
707
708
709
710
711
712
713
714
715
716
717
718
719
720
721
722
723
724
725
726
727
728
729
730
731
732
733
734
735
736
737
738
739
740
741
742
743
744
745
746
747
748
749
750
751
752
753
754
755
756
757
758
759
760
761
762
763
764
765
766
767
768
769
770
771
772
773
774
775
776
777
778
779
780
781
782
783
784
785
786
787
788
789
790
791
792
793
794
795
796
797
798
799
800
801
802
803
804
805
806
807
808
809
810
811
812
813
814
815
816
817
818
819
820
821
822
823
824
825
826
827
828
829
830
831
832
833
834
835
836
837
838
839
840
841
842
843
844
845
846
847
848
849
850
851
852
853
854
855
856
857
858
859
860
861
862
863
864
865
866
867
868
869
870
871
872
873
874
875
876
877
878
879
880
881
882
883
884
885
886
887
888
889
890
891
892
893
894
895
896
897
898
899
900
901
902
903
904
905
906
907
908
909
910
911
912
913
914
915
916
917
918
919
920
921
922
923
924
925
926
927
928
929
930
931
932
933
934
935
936
937
938
939
940
941
942
943
944
945
946
947
948
949
950
951
952
953
954
955
956
957
958
959
960
961
962
963
964
965
966
967
968
969
970
971
972
973
974
975
976
977
978
979
980
981
982
983
984
985
986
987
988
989
990
991
992
993
994
995
996
997
998
999
1000

FFP was defined as the time from study entry to disease progression or relapse; deaths that occurred during remission that were not preceded by disease progression/relapse were censored. OS was defined as the time from study entry to death from any cause. The Kaplan-Meier method and Cox proportional regression model were used to estimate failure rates, hazard ratios (HRs), and 95% CIs. Log-rank test was used to compare the survival distributions between groups^{18,19}.

1
2
3 The prognostic ability of individual IPS factors was evaluated for FFP and OS in both univariate
4 and multivariable Cox regression models. A new 3-factor prognostic score (IPS-3) was
5 constructed utilizing factors that were significant in multivariate Cox models. Possible
6 alternative cut-off points for the 3 selected factors were evaluated using Chi-square statistics.
7 FFP and OS curves were used to classify patients into 3 risk groups low, intermediate, and high
8 based on number of risk factors: 0-2, 3-4 and ≥ 5 factors for IPS-7; 0, 1-2 and 3 factors for IPS-
9 3, respectively. The prognostic performance of IPS-7 and IPS-3 was evaluated using the global
10 model fit criteria Akaike information criterion (AIC), concordance probability estimate (CPE), and
11 time-dependent AUC (area under ROC curve) for both FFP and OS ^{20,21}. Lower AIC, higher
12 CPE, and/or higher AUC indicated better concordance. The reclassification calibration method
13 was used to cross-tabulate all risk groups by IPS-7 and IPS-3 ^{22,23}. Specifically, for cases that
14 were re-classified to different risk group by IPS-3, the observed FFP and OS estimates were
15 compared to survival rates predicted by IPS-7 and IPS-3 respectively. The primary analysis
16 includes all randomized patients. An additional subset analysis was performed on patients with
17 advanced stage III-IV. The analysis was performed using SAS 9.3 and R 3.0.3.

36 RESULTS

39 Patient Characteristics

42 Patient characteristics comparing E2496, original IPS report and the BCCA cohort are shown in
43 Table S1. In E2496 most patients (62%) had stage III or IV disease and the remainder (37%)
44 bulky stage I or II disease.

50 Evaluation of Outcome for E2496 Patients by IPS-7

53 As previously reported, there were no significant differences between the two arms (ABVD
54 versus Stanford V) for failure free survival (FFS) and OS at a median follow-up of 6.4 years ².

1
2
3 The IPS-7 remained predictive for FFP ($p=0.012$) and OS ($p<.0001$) as shown in Figure 1a and
4
5 1b, however, the separation among IPS-7 groups has narrowed. For patients in both the
6
7 highest and lowest risk groups, Kaplan-Meier curves of FFP and OS largely overlap. Risk
8
9 prediction by IPS-7 in the E2496 cohort is similar to the BCC report, but differs from the original
10
11 report by Hasenclever (Table S2).
12
13

14 15 **Significance of Individual Seven Factors Used in IPS-7**

16
17
18 Table 1 summarizes the results of univariate and multivariate Cox regression assessing the
19
20 prognostic ability of the 7 individual IPS factors for both FFP and OS. On multivariate analysis,
21
22 two factors (hemoglobin level and stage) were significant in predicting FFP and three factors
23
24 (age, hemoglobin level, and stage) were significant for OS. Lymphocyte count was marginally
25
26 significant for FFP prediction in univariate analysis ($p=0.08$), but lost its prognostic effect
27
28 ($p=0.29$) when put together in the model adjusting for hemoglobin level and stage. A similar
29
30 observation was seen for albumin in predicting OS ($p=0.04$ in univariate analysis and 0.31 in
31
32 multivariate analysis).
33
34
35

36 37 **Evaluation of a Simpler 3 Factor Prognostic Score (IPS-3)**

38
39 An alternative prognostic score (IPS-3) was constructed utilizing the variables that remained
40
41 significant for predicting FFP or OS on multivariate analysis (Table 1): age \geq 45 years,
42
43 hemoglobin $<$ 10.5g/dl, and stage IV. More than half (56%) of the patients had none of these risk
44
45 factors, 32% of patients had 1 risk factor, and 10% 2 risk factors. Only 3% (23 patients) had all 3
46
47 risk factors. The IPS-3 was significant for both FFP ($p=0.0001$) and OS ($p<.0001$) and
48
49 separated patients into 4 distinct risk groups (Figures 1c and 1d). The five-year FFP by IPS-3
50
51 was 83%, 74%, 68%, and 63% and OS 95%, 85%, 75%, and 52% for patients with 0, 1, 2, and
52
53
54 3 risk factors, respectively.
55
56
57
58
59
60

1
2
3 We also explored different cut-off values of age, stage, and hemoglobin: age 50 versus 55
4 versus 60, stage III/IV versus stage I/II, and hemoglobin of < 10 g/dl versus <9.5 g/dl. Chi-
5 square statistics and hazard ratio associated with different cut-off values are displayed in Table
6 S2. The largest Chi-square statistics selected to refine the IPS-3 were age>55, stage III/IV, and
7 hemoglobin <10.5 g/dl. The results comparing the two models (original versus refined IPS-3)
8 did not show meaningful difference to support the alternative cut-offs. There were very little
9 differences in CPE between the two models (0.58 versus 0.60 for FFP, and 0.65 versus 0.65 for
10 OS). Therefore for further analysis the original cut-off points were used in IPS-3.
11
12
13
14
15
16
17
18
19

20 21 **Subset Analysis in Patients with Advanced Stage Diseases**

22
23
24 To assess the utility of the IPS-7 and the IPS-3 in patients restricted to advanced disease (stage
25 III-IV) we performed an additional subset analysis. Among the 529 (62%) patients in this
26 category, IPS-7 was not significant for FFP [$p=0.15$, Figure S1 (a)], but remained highly
27 prognostic for OS [$p\leq 0.0001$; Figure S1 (b)]. For IPS-3 there is separation for FFP curves
28 [Figure S1, (c)], however the difference is not statistically significant ($p=0.11$). IPS-3 also
29 remained highly prognostic for OS [$p\leq 0.0001$; Figure S1 (d)].
30
31
32
33
34
35
36
37

38 **Comparison of IPS-3 to IPS-7**

39
40
41 The time-dependent AUC ranked IPS-3 higher than IPS-7 at all times for both FFP and OS
42 (Figure 2a and 2b). IPS-3 was also ranked higher than IPS-7 using the global fit discriminatory
43 measure (CPE), with 0.58 versus 0.55 for FFP, and 0.65 versus 0.59 for OS. These results
44 suggest a better concordance between the observed data and IPS-3. Lower AIC was seen for
45 IPS-3 than for IPS-7 (2375 versus 2381 for FFP, and 1313 versus 1336 for OS) again indicating
46 better model fit with IPS-3 for both FFP and OS.
47
48
49
50
51
52
53

54
55 We also compared IPS-3 to IPS-7 using reclassification calibration methods. A total of 238
56 (28%) patients were reclassified to different risk categories by IPS-3 vs IPS-7 (Table 2). Among
57
58
59
60

1
2
3 the IPS-7 low risk patients, 153 (18%) were reclassified as intermediate risk by IPS-3. Both FFP
4 and OS were closer to the predicted survival rates made by IPS-3 than by IPS-7, suggesting
5 that IPS-3 was more accurate for the reclassified 153 patients [Figure 3 (a1, a2)]. Similarly the
6
7
8
9
10 IPS-3 reclassified 54 (13%) of IPS -7 intermediate risk patients as low risk [Figure 3 (b1, b2)],
11
12 with FFS and OS curves closer to the predicted survival rates made by IPS-3 than by IPS-7. A
13
14 very small number (n=28, 3%) of patients were reclassified from IPS-7 high risk to IPS-3
15
16 intermediate risk. For this latter group IPS-7 was a better predictor of FFP than IPS-3, however
17
18 there was no substantial difference in predicting OS, [Figure 3 (c1,c2)].
19

20 21 22 **Discussion**

23
24 Our analysis of data from E2496 shows that the IPS-7 remains prognostic in the contemporary
25
26 era, however the magnitude of the differences for both FFP and OS for the lowest and highest
27
28 risk patients have narrowed, and are consistent with the findings from the BCCA ¹⁷. In our
29
30 dataset, only 2 of the original 7 factors used in the IPS-7 remain significant for FFP (age and
31
32 stage), and 3 factors for OS (age, stage, and hemoglobin). Based on this, a simpler prognostic
33
34 score the IPS-3 was constructed that identified 4 distinct risk groups based on 0,1,2, or 3 risk
35
36 factors, which provided risk-stratification for both FFP (p=0.0001) and OS (p<0.0001). As
37
38 compared to IPS-7, better global prognostic performance of IPS-3 was suggested by model fit
39
40 and discrimination criteria. In addition, IPS-3 reclassified 18% of IPS-7 low risk patients as
41
42 intermediate risk, and 13% of IPS-7 intermediate risk patients as low risk, with observed FFP
43
44 and OS rate estimates among reclassified patients closer to those predicted by the
45
46 corresponding IPS-3 category. In our data set, the number of patients in the highest risk group
47
48 were too few to draw any valid conclusions.
49

50
51
52
53 Our study population differs from original IPS-7 report with respect to stage at diagnosis. In the
54
55 latter study patients with early stage high-risk disease (stages I, II) comprised 13% of the patient
56
57 population, compared to 37% high-risk stage I and II patients in E2496. Thus to evaluate
58
59
60

1
2
3 whether this discrepancy skewed outcomes towards more favorable outcomes with IPS-3 we
4 performed an additional subset analysis restricted to the patients with advanced stage (III-IV)
5 disease. While 4 distinct risk groups were noted the differences were not statistically significant
6 for FFP ($p=0.11$) and remained highly significant for OS ($p\leq 0.0001$). This was also the case
7 for IPS-7 in our study where differences in FFP were not significant ($p=0.15$). This suggests
8 that patients with a high IPS-3 or IPS-7 at diagnosis may have a worse outcome at relapse than
9 patients with low risk scores.
10
11
12
13
14
15
16
17

18
19 Therapeutic advances such as the replacement of MOPP chemotherapy with ABVD, use of
20 autologous stem cell transplant at relapse, growth factors to support dose intensity, improved
21 imaging modalities which allow for accurate staging, and increased diagnostic accuracy are
22 some of the key reasons which have contributed to the improvement in patient outcomes in the
23 contemporary era. Yet despite these advances, some patients continue to have extremely poor
24 outcomes. Clinical prognostic factors incorporated within the IPS-7 reflect the interaction of the
25 biologic heterogeneity of HL with treatment. In the original IPS-7 analyses all risk factors were
26 equally weighted. In contrast in the contemporary era, only 3 of these risk factors remained
27 significant and were used to construct IPS-3. Advanced age is well recognized in several
28 studies to be associated with inferior outcome²⁴⁻²⁶. Elderly patients are not well represented in
29 the original IPS-7, as only 9% of patients were older than 55 years, with none older than 65
30 years⁷. By comparison, patients up to age 83 were included in E2496, and 157 (18%) of
31 patients were older than 45 years. Assessing alternative age cutoffs did not appear to improve
32 the predictive power of the IPS-3, as only a minority ($n=12$, 1%) of patients were included in the
33 highest risk groups. Additionally age did not appear to affect the total chemotherapy dose
34 received²⁵. It is less clear why anemia conferred a higher risk factor for poor OS than other lab
35 parameters such as low albumin, leukopenia, and lymphocytosis. The anemia may have
36 correlated with poor overall fitness and/or poor marrow reserve. It is plausible that anemia may
37
38
39
40
41
42
43
44
45
46
47
48
49
50
51
52
53
54
55
56
57
58
59
60

1
2
3 be associated with adverse tumor biology, increased inflammatory cytokine production, and/or
4
5
6
7
8
9
10
11
12
13
14
15
16
17
18
19
20
21
22
23
24
25
26
27
28
29
30
31
32
33
34
35
36
37
38
39
40
41
42
43
44
45
46
47
48
49
50
51
52
53
54
55
56
57
58
59
60

be associated with adverse tumor biology, increased inflammatory cytokine production, and/or macrophage infiltration. Clearly this warrants further investigation.

A potential limitation of our study is that the study patients in E2496 were treated with one of two chemotherapy regimens (ABVD or Stanford V), thus the question of whether the IPS-3 would be applicable to other current dose intense regimens such as escalated BEACOPP, or to novel therapies such as brentuximab vedotin remains to be studied. Another limitation is that despite the overall large sample size of our study, there were very few patients (n=23) who had all 3 IPS-3 risk factors. Therefore validation of the IPS-3 in other data sets is definitely required.

In a largely curable disease it is important to individualize therapy by accurately selecting patients based on risk factors at diagnosis. With the multiplicity of therapeutic options now available for HL, accurate assessment of risk based on outcomes expected with contemporary therapy is more important now than ever before. The distinction of 4 groups by IPS-3 has clinical significance as new therapeutic advances are required for high risk patients, while minimizing therapy to alter the spectrum of long-term therapy related toxicity becomes more important for the low risk patients. As therapeutic strategies evolve these alternative indices are increasingly necessary for patient identification and risk stratification for clinical trials that utilize risk-adapted treatment approaches. There is precedent to refine prognostic scores in other lymphomas as clinical outcomes have evolved with improved therapies as reflected by the revised IPI (R-IPI) in DLBCL, which redistributed the 5 IPI elements into 3 prognostic groups with 4 year OS ranging from 55% to 94%²⁷, the elderly IPI (E-IPI) which used an age cut off of 70 years rather than the 60 years used in the IPI, and provided additional prognostic discrimination for elderly patients of low and low-intermediate risk²⁸, the NCCN IPI in DLBCL²⁹, and the Follicular Lymphoma International Prognostic Index-2 (FLIPI-2) which stratified patients into 3 quartiles based on low risk (0), intermediate risk (1-2), and high risk³⁰.

1
2
3 Advances in of HL biology suggest the significance of the interaction of the HRS cell with its
4 tumor microenvironment for clinical outcomes. Expression of CD68+ and CD163 by tumor-
5 associated macrophages (TAMS) is correlated with inferior PFS and OS ³¹⁻³⁴. More recently,
6 NanoString digital expression profiling described a 23-gene signature which identified a high risk
7 subset of advanced stage HL patients ³⁵. Other novel prognostic indicators such as EBV
8 expression and lymphocyte/monocyte ratio have also shown to have prognostic significance ³⁶.
9 Moving forward, a truly comprehensive risk assesment platform must take these biologic
10 features as well as clinical factors into account. Efforts to incorporate these advances into the
11 IPS-3 are ongoing.
12
13
14
15
16
17
18
19
20
21
22
23
24
25
26
27
28
29
30
31
32
33
34
35
36
37
38
39
40
41
42
43
44
45
46
47
48
49
50
51
52
53
54
55
56
57
58
59
60

ACKNOWLEDGMENTS

Supported in part by research funding from the American Cancer Society (MRS-14-052-01-LIB) CD

Presented in part: 9th International Hodgkin Lymphoma Symposium, Cologne 2013; American Society of Hematology Annual Meeting, 2013.

This study was coordinated by the ECOG-ACRIN Cancer Research Group (Robert L. Comis, MD and Mitchell D. Schnall, MD, PhD, Group Co-Chairs) and supported in part by Public Health Service CA21115, CA180820, CA180794, CA23318, CA66636, CA17145, CA13650, CA180790, CA21076, CA180799, CA180816, CA11083, CA27525, CA32102, CA46282, CA77440, CA77597, CA77658, CA31946, CA33601, CA77202 and from the National Cancer Institute, National Institutes of Health and the Department of Health and Human Services. Its content is solely the responsibility of the authors and does not necessarily represent the official views of the National Cancer Institute.

AUTHORSHIP CONTRIBUTIONS

CD, HL, FH, RA designed the research.

CD, HL, FH, RA performed the research.

LG, RF, NB, MC, RG, HW, PS, BC, DS, BK, JF, KB, TH, JT, RH, SH, RA collected data.

CD, HL, FH, RA analyzed and interpreted data

HL, FH performed statistical analysis

CD, HL, FH, RA wrote the manuscript.

All authors reviewed and approved the manuscript.

DISCLOSURES OF CONFLICTS OF INTEREST:

1
2
3 CD: no conflicts of interest to disclose
4 HL: no conflicts of interest to disclose
5 FH: no conflicts of interest to disclose
6 LG: no conflicts of interest to disclose
7 RF: no conflicts of interest to disclose
8 NB: no conflicts of interest to disclose
9 MC: no conflicts of interest to disclose
10 RD: no conflicts of interest to disclose
11 HW: no conflicts of interest to disclose
12 PS: no conflicts of interest to disclose
13 BC: no conflicts of interest to disclose
14 DS: no conflicts of interest to disclose
15 BK: no conflicts of interest to disclose
16 JF: no conflicts of interest to disclose
17 KB: no conflicts of interest to disclose
18 TH: no conflicts of interest to disclose
19 JT: no conflicts of interest to disclose
20 RH: no conflicts of interest to disclose
21 SH: no conflicts of interest to disclose
22 RA: no conflicts of interest to disclose
23
24
25
26
27
28
29
30
31
32
33
34
35
36
37
38
39
40
41
42
43
44
45
46
47
48
49
50
51
52
53
54
55
56
57
58
59
60

Peer Review

REFERENCES

1. Cancer facts and figures 2013. Atlanta GA: American Cancer Society, 2013.
2. Gordon LI, Hong F, Fisher RI, et al: Randomized phase III trial of ABVD versus Stanford V with or without radiation therapy in locally extensive and advanced-stage Hodgkin lymphoma: an intergroup study coordinated by the Eastern Cooperative Oncology Group (E2496). *J Clin Oncol* 31:684-91, 2013
3. Engert A, Haverkamp H, Kobe C, et al: Reduced-intensity chemotherapy and PET-guided radiotherapy in patients with advanced stage Hodgkin's lymphoma (HD15 trial): a randomised, open-label, phase 3 non-inferiority trial. *Lancet* 379:1791-9, 2012
4. Federico M, Luminari S, Iannitto E, et al: ABVD compared with BEACOPP compared with CEC for the initial treatment of patients with advanced Hodgkin's lymphoma: results from the HD2000 Gruppo Italiano per lo Studio dei Linfomi Trial. *J Clin Oncol* 27:805-11, 2009
5. Viviani S, Zinzani PL, Rambaldi A, et al: ABVD versus BEACOPP for Hodgkin's lymphoma when high-dose salvage is planned. *N Engl J Med* 365:203-12, 2011
6. Arai S, Fanale M, Devos S, et al: Defining a Hodgkin lymphoma population for novel therapeutics after relapse from autologous hematopoietic cell transplant. *Leuk Lymphoma*, 2013
7. Hasenclever D, Diehl V: A prognostic score for advanced Hodgkin's disease. International Prognostic Factors Project on Advanced Hodgkin's Disease. *N Engl J Med* 339:1506-14, 1998
8. Engert A, Plutschow A, Eich HT, et al: Reduced treatment intensity in patients with early-stage Hodgkin's lymphoma. *N Engl J Med* 363:640-52, 2010
9. Straus DJ, Portlock CS, Qin J, et al: Results of a prospective randomized clinical trial of doxorubicin, bleomycin, vinblastine, and dacarbazine (ABVD) followed by radiation therapy (RT) versus ABVD alone for stages I, II, and IIIA nonbulky Hodgkin disease. *Blood* 104:3483-9, 2004
10. Eich HT, Diehl V, Gorgen H, et al: Intensified chemotherapy and dose-reduced involved-field radiotherapy in patients with early unfavorable Hodgkin's lymphoma: final analysis of the German Hodgkin Study Group HD11 trial. *J Clin Oncol* 28:4199-206, 2010
11. Younes A, Gopal AK, Smith SE, et al: Results of a pivotal phase II study of brentuximab vedotin for patients with relapsed or refractory Hodgkin's lymphoma. *J Clin Oncol* 30:2183-9, 2012
12. Hutchings M, Mikhaeel NG, Fields PA, et al: Prognostic value of interim FDG-PET after two or three cycles of chemotherapy in Hodgkin lymphoma. *Ann Oncol* 16:1160-8, 2005
13. Gallamini A, Hutchings M, Rigacci L, et al: Early interim 2-[18F]fluoro-2-deoxy-D-glucose positron emission tomography is prognostically superior to international prognostic score in advanced-stage Hodgkin's lymphoma: a report from a joint Italian-Danish study. *J Clin Oncol* 25:3746-52, 2007
14. Biggi A, Gallamini A, Chauvie S, et al: International validation study for interim PET in ABVD-treated, advanced-stage Hodgkin lymphoma: interpretation criteria and concordance rate among reviewers. *J Nucl Med* 54:683-90, 2013
15. Cheson BD, Fisher RI, Barrington SF, et al: Recommendations for Initial Evaluation, Staging, and Response Assessment of Hodgkin and Non-Hodgkin Lymphoma: The Lugano Classification. *J Clin Oncol*, 2014
16. Barrington SF, Mikhaeel NG, Kostakoglu L, et al: Role of Imaging in the Staging and Response Assessment of Lymphoma: Consensus of the International Conference on Malignant Lymphomas Imaging Working Group. *J Clin Oncol*, 2014
17. Moccia AA, Donaldson J, Chhanabhai M, et al: International Prognostic Score in advanced-stage Hodgkin's lymphoma: altered utility in the modern era. *J Clin Oncol* 30:3383-8, 2012
18. Kaplan EL, Meier P. Nonparametric estimation from incomplete observations. *Journal of the American Statistical Association* 53: 457-481, 1958.

19. Cox, D. R.; Oakes, D. (1984). Analysis of Survival Data. New York: Chapman & Hall. ISBN 041224490X.
20. Akaike, H. (1974) A new look at the statistical model identification. IEEE Transactions on Automatic Control, 19, 716–723
21. Gonen, M. & Heller, G. (2005) Concordance probability and discriminative power of proportional hazards regression. Biometrika, 92, 965–970
22. Heagerty PJ, Zheng Y: Survival model predictive accuracy and ROC curves. Biometrics 61:92-105, 2005
23. Cook NR, Ridker PM: Advances in measuring the effect of individual predictors of cardiovascular risk: the role of reclassification measures. Ann Intern Med 150:795-802, 2009
24. Engert A, Ballova V, Haverkamp H, et al: Hodgkin's lymphoma in elderly patients: a comprehensive retrospective analysis from the German Hodgkin's Study Group. J Clin Oncol 23:5052-60, 2005
25. Evens AM, Hong F, Gordon LI, et al: The efficacy and tolerability of adriamycin, bleomycin, vinblastine, dacarbazine and Stanford V in older Hodgkin lymphoma patients: a comprehensive analysis from the North American intergroup trial E2496. Br J Haematol 161:76-86, 2013
26. Landgren O, Algernon C, Axdorph U, et al: Hodgkin's lymphoma in the elderly with special reference to type and intensity of chemotherapy in relation to prognosis. Haematologica 88:438-44, 2003
27. Sehn LH, Berry B, Chhanabhai M, et al: The revised International Prognostic Index (R-IPI) is a better predictor of outcome than the standard IPI for patients with diffuse large B-cell lymphoma treated with R-CHOP. Blood 109:1857-61, 2007
28. Advani RH, Chen H, Habermann TM, et al: Comparison of conventional prognostic indices in patients older than 60 years with diffuse large B-cell lymphoma treated with R-CHOP in the US Intergroup Study (ECOG 4494, CALGB 9793): consideration of age greater than 70 years in an elderly prognostic index (E-IPI). Br J Haematol 151:143-51, 2010
29. Zhou Z, Sehn LH, Rademaker AW, et al: An enhanced International Prognostic Index (NCCN-IPI) for patients with diffuse large B-cell lymphoma treated in the rituximab era. Blood 123:837-42, 2014
30. Federico M, Bellei M, Marcheselli L, et al: Follicular lymphoma international prognostic index 2: a new prognostic index for follicular lymphoma developed by the international follicular lymphoma prognostic factor project. J Clin Oncol 27:4555-62, 2009
31. Steidl C, Lee T, Shah SP, et al: Tumor-associated macrophages and survival in classic Hodgkin's lymphoma. The New England journal of medicine 362:875-85, 2010
32. Kamper P, Bendix K, Hamilton-Dutoit S, et al: Tumor-infiltrating macrophages correlate with adverse prognosis and Epstein-Barr virus status in classical Hodgkin's lymphoma. Haematologica 96:269-76, 2011
33. Tan KL, Scott DW, Hong F, et al: Tumor-associated macrophages predict inferior outcomes in classic Hodgkin lymphoma: a correlative study from the E2496 Intergroup trial. Blood 120:3280-7, 2012
34. Steidl C, Diepstra A, Lee T, et al: Gene expression profiling of microdissected Hodgkin Reed-Sternberg cells correlates with treatment outcome in classical Hodgkin lymphoma. Blood 120:3530-40, 2012
35. Scott DW, Chan FC, Hong F, et al: Gene expression-based model using formalin-fixed paraffin-embedded biopsies predicts overall survival in advanced-stage classical Hodgkin lymphoma. J Clin Oncol 31:692-700, 2013

1
2
3
4
5
6
7
8
9
10
11
12
13
14
15
16
17
18
19
20
21
22
23
24
25
26
27
28
29
30
31
32
33
34
35
36
37
38
39
40
41
42
43
44
45
46
47
48
49
50
51
52
53
54
55
56
57
58
59
60

36. Kanakry JA, Li H, Gellert LL, et al: Plasma Epstein-Barr virus DNA predicts outcome in advanced Hodgkin lymphoma: correlative analysis from a large North American cooperative group trial. Blood 121:3547-53, 2013

For Peer Review

Table 1: Individual IPS factors with FFP and OS by Univariate and Multivariate Analysis

IPS factor	FFP				OS			
	Univariate Analysis		Multivariate Analysis		Univariate Analysis		Multivariate Analysis	
	HR(95% CI)	p-value	HR(95% CI)	p-value	HR(95% CI)	p-value	HR(95% CI)	p-value
Age≥45 years	1.3 (0.9-1.8)	0.15	1.2 (0.9-1.8)	0.27	4.0 (2.7-5.9)	<0.0001	3.7 (2.5-5.5)	<0.0001
Albumin<4g/dl	1.0 (0.7-1.4)	0.92	0.8 (0.6-1.1)	0.21	1.6 (1.0-2.5)	0.04	1.3 (0.8-2.1)	0.31
WBC≥15,000 mm ³	1.3 (0.9-2.0)	0.20	1.3 (0.8-1.9)	0.28	1.1 (0.7-2.0)	0.64	1.2 (0.7-2.1)	0.52
Hgb<10.5g/dl	1.8 (1.3-2.6)	0.0003	1.7 (1.2-2.5)	0.004	2.8 (1.9-4.2)	<0.0001	2.1 (1.3-3.3)	0.002
Lymph count <600 mm ³ or <8% of WBC	1.3 (1.0-1.9)	0.08	1.2 (0.8-1.7)	0.29	1.2 (0.7-1.9)	0.48	1.0 (0.6-1.6)	0.91
Male	1.1 (0.8-1.5)	0.55	1.1 (0.8-1.5)	0.55	1.1 (0.8-1.6)	0.57	1.1 (0.7-1.6)	0.68
Stage IV	1.7 (1.3-2.4)	0.0005	1.5 (1.1-2.1)	0.02	2.3 (1.6-3.4)	<0.0001	1.7 (1.1-2.5)	0.02

* Factors and numbers in bold indicate significant p-values in the analysis.

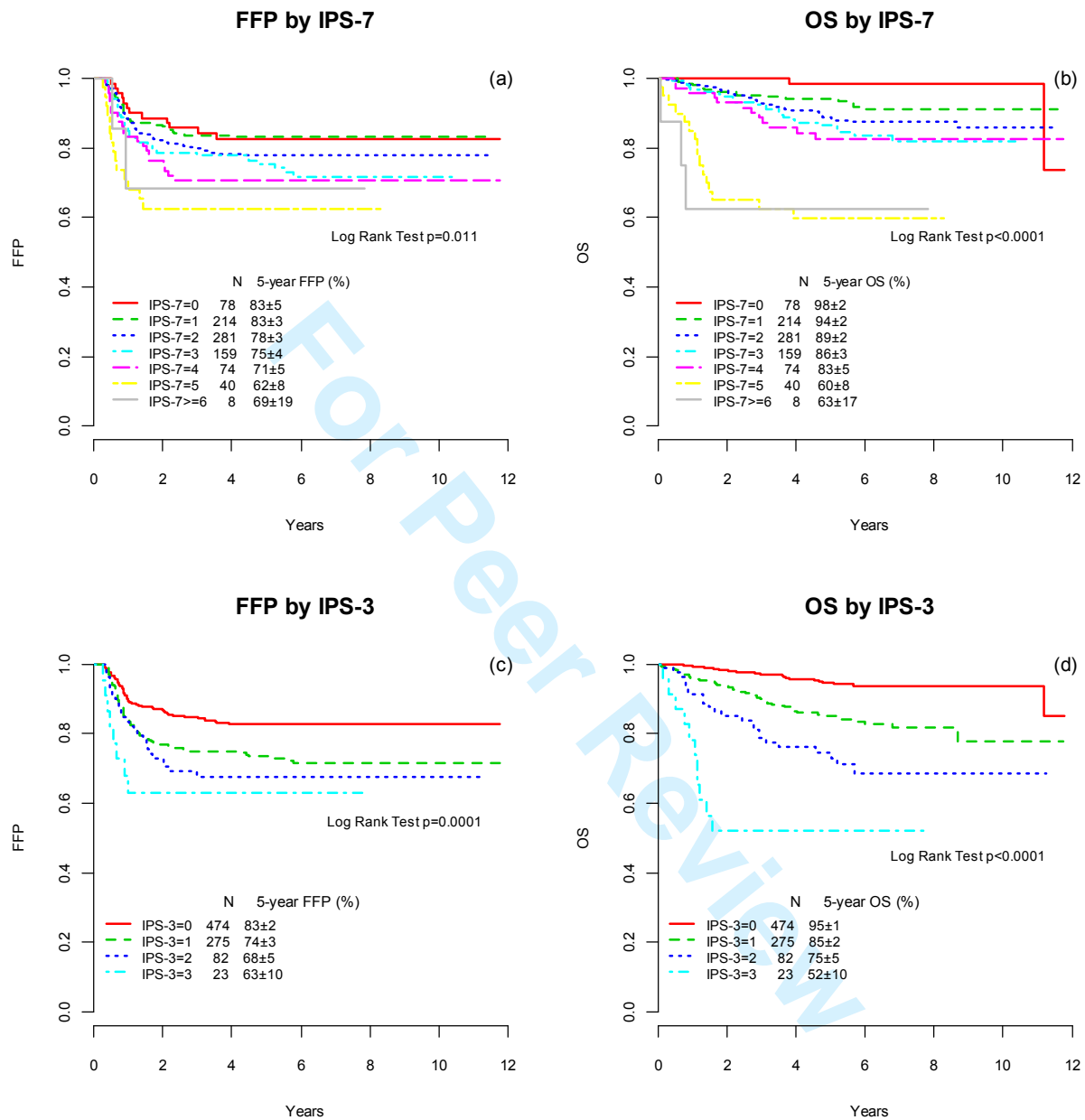
Table 2: Reclassification: Number of Patients in Each Risk Category by IPS-7 and IPS-3

		IPS-7			
		Low Risk (0-2)	Intermediate Risk (3-4)	High Risk (5-7)	Total
IPS-3	Low Risk (0)	420	54	0	474 (56%)
	Intermediate Risk (1-2)	153	176	28	357 (42%)
	High Risk (3)	0	3	20	23 (3%)
	Total	573 (67%)	233 (27%)	48 (6%)	854

* Numbers in bold indicate patients who were reclassified.

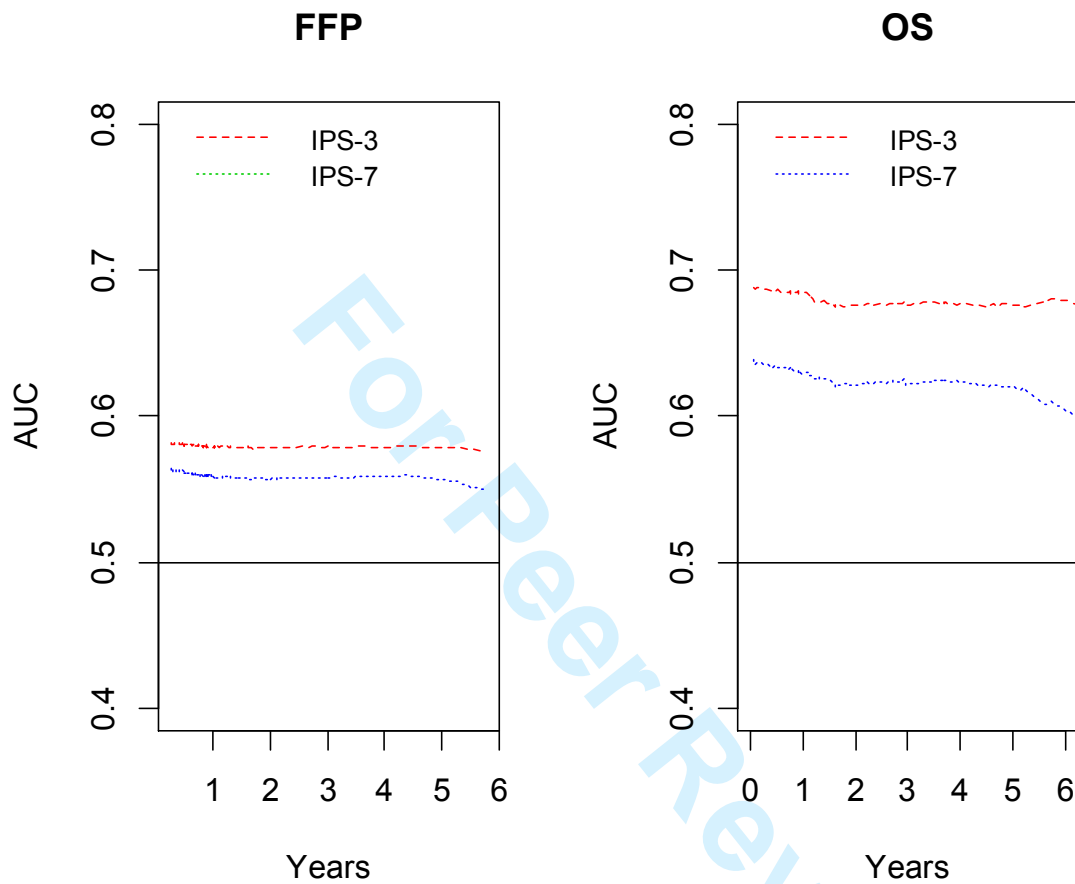
For Peer Review

Figure 1: Freedom from progression (FFP) and overall survival (OS) according to the International Prognostic Score (IPS) factors (a, b) and the simpler prognostic index IPS-3 (c,d)



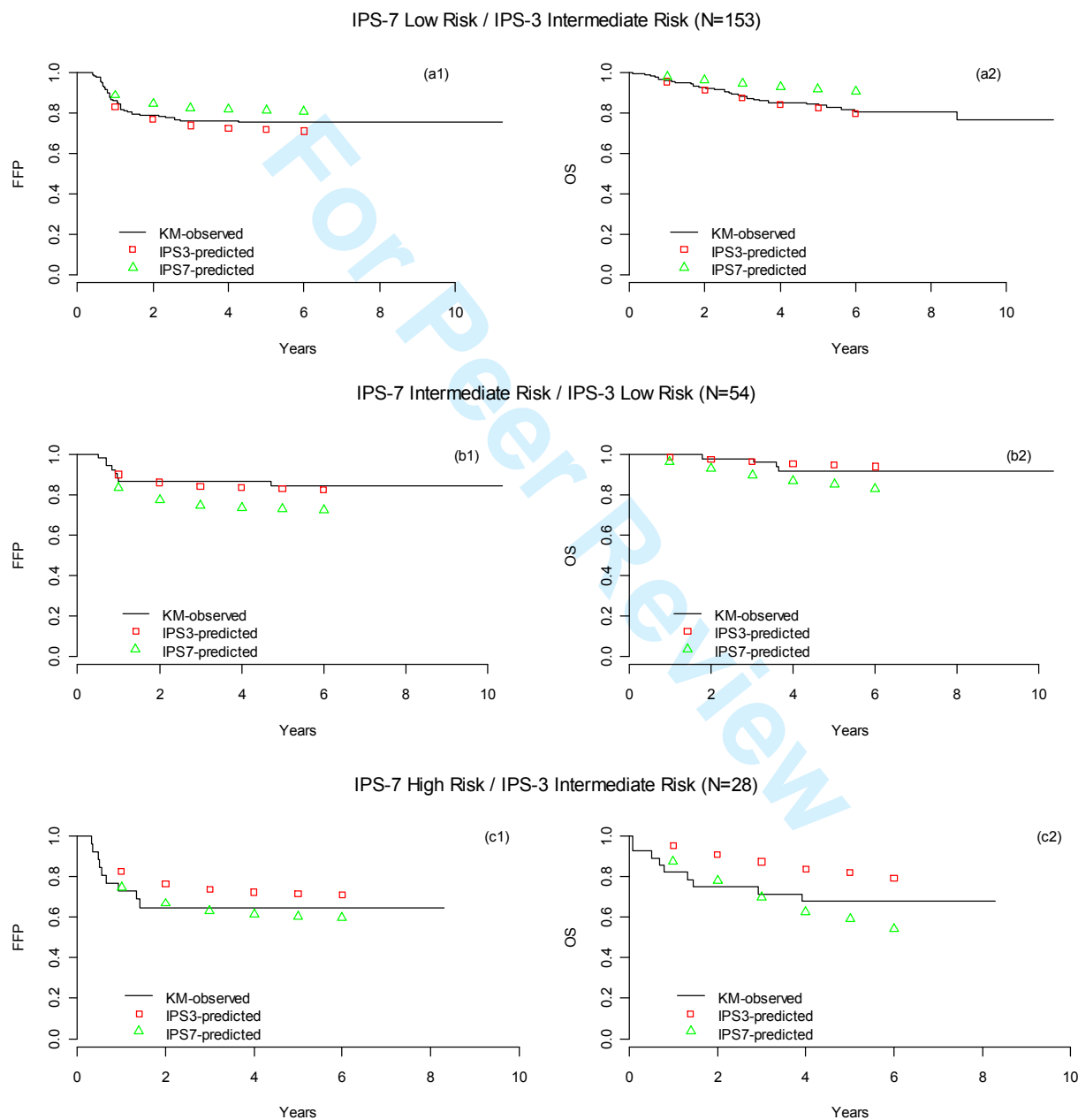
1
2
3
4
5
6
7
8
9
10
11
12
13
14
15
16
17
18
19
20
21
22
23
24
25
26
27
28
29
30
31
32
33
34
35
36
37
38
39
40
41
42
43
44
45
46
47
48
49
50
51
52
53
54
55
56
57
58
59
60

Figure 2: Time weighted area under the receiver operator characteristics curves (AUC) for freedom-from progression (A) and overall survival (B) according to the International Prognostic Score factors IPS-7 and simpler prognostic index IPS-3.



1
2
3
4
5
6
7
8
9
10
11
12
13
14
15
16
17
18
19
20
21
22
23
24
25
26
27
28
29
30
31
32
33
34
35
36
37
38
39
40
41
42
43
44
45
46
47
48
49
50
51
52
53
54
55
56
57
58
59
60

Figure 3: Kaplan-Meier (KM) analysis of observed and predicted (by IPS-7 and IPS-3) FFP and OS for patients whose risk categories were reclassified by IPS-3. N=153 patients low risk by IPS-7 but intermediate risk by IPS-3 (a1, a2); n=54 patients intermediate risk by IPS-7 but low risk by IPS-3 (b1, b2); n=28 patients high risk by IPS-7 but intermediate risk by IPS-3 (c1,c2). The predicted survival rates were produced by univariate Cox models using IPS-3 and IPS-7 as covariates.



Supplementary Tables

Table S1: Patient Characteristics Comparing the Three Studies

	E2496		Original IPS Cohort		Vancouver Study Cohort	
	N	%	N	%	N	%
Total N	854		4695		740	
Ann Arbor Stage						
I or II	314	37	603	13	308	42
III	321	38	2110	45	255	35
IV	208	25	1979	42	177	24
Histology						
Nodular sclerosis	591	72	2936	63	577	78
Mixed Cellularity	89	11	1202	26	53	7
Lymphocyte-rich	14	2			9	1
Lymphocyte-depleted	3	0.4	124	3	12	2
Lymphocyte predominant	16	2	162	3	20	3
Classical HL, not further classifiable	105	13	268	6	69	9
Other	5	0.6	0	0	0	0
B symptoms	481	57	3274	71	477	64
IPS Factors						
Age \geq 45 years	157	18	991	21	196	26
Albumin < 4 g/dl	566	66	1457	65	474	64
WBC \geq 15,000/mm ³	110	13	Not reported	Not reported	114	15
Hemoglobin < 10.5 g/dl	145	17	Not reported	Not reported	147	20
Lymphocyte count < 600/mm ³ or < 8% of white-cell count	169	20	Not reported	21	160	22
Male sex	444	52	2882	61	403	54
Stage IV	206	24	1979	42	177	24
IPS						
0	78	9	115	7	57	8
1	214	25	360	22	195	26
2	281	33	464	29	195	26
3	159	19	378	23	155	21
4	74	9	190	12	88	12
\geq 5	48	6	111	7	50	7

* Percentage was calculated among patients with the values available (excluding missing values).

Table S2: Five-year FFP and OS by IPS

IPS	5-year FFP			5-year OS		
	E2496	Vancouver Study Cohort	Original IPS Cohort	E2496	Vancouver Study Cohort	Original IPS Cohort
0	83 ± 5	88 ± 5	84 ± 4	98 ± 2	98 ± 2	89 ± 2
1	83 ± 3	84 ± 3	77 ± 3	94 ± 2	97 ± 1	90 ± 2
2	78 ± 3	80 ± 3	67 ± 2	89 ± 2	91 ± 2	81 ± 2
3	75 ± 4	74 ± 3	60 ± 3	86 ± 3	88 ± 3	78 ± 3
4	71 ± 5	67 ± 5	51 ± 4	83 ± 5	85 ± 4	61 ± 4
≥5	63 ± 7	62 ± 7	42 ± 5	60 ± 7	67 ± 7	56 ± 5
0-3	79 ± 2	81 ± 2	70 ± 2	91 ± 1	93 ± 1	83 ± 1
≥4	68 ± 4	65 ± 4	47 ± 2	74 ± 4	78 ± 4	59 ± 2

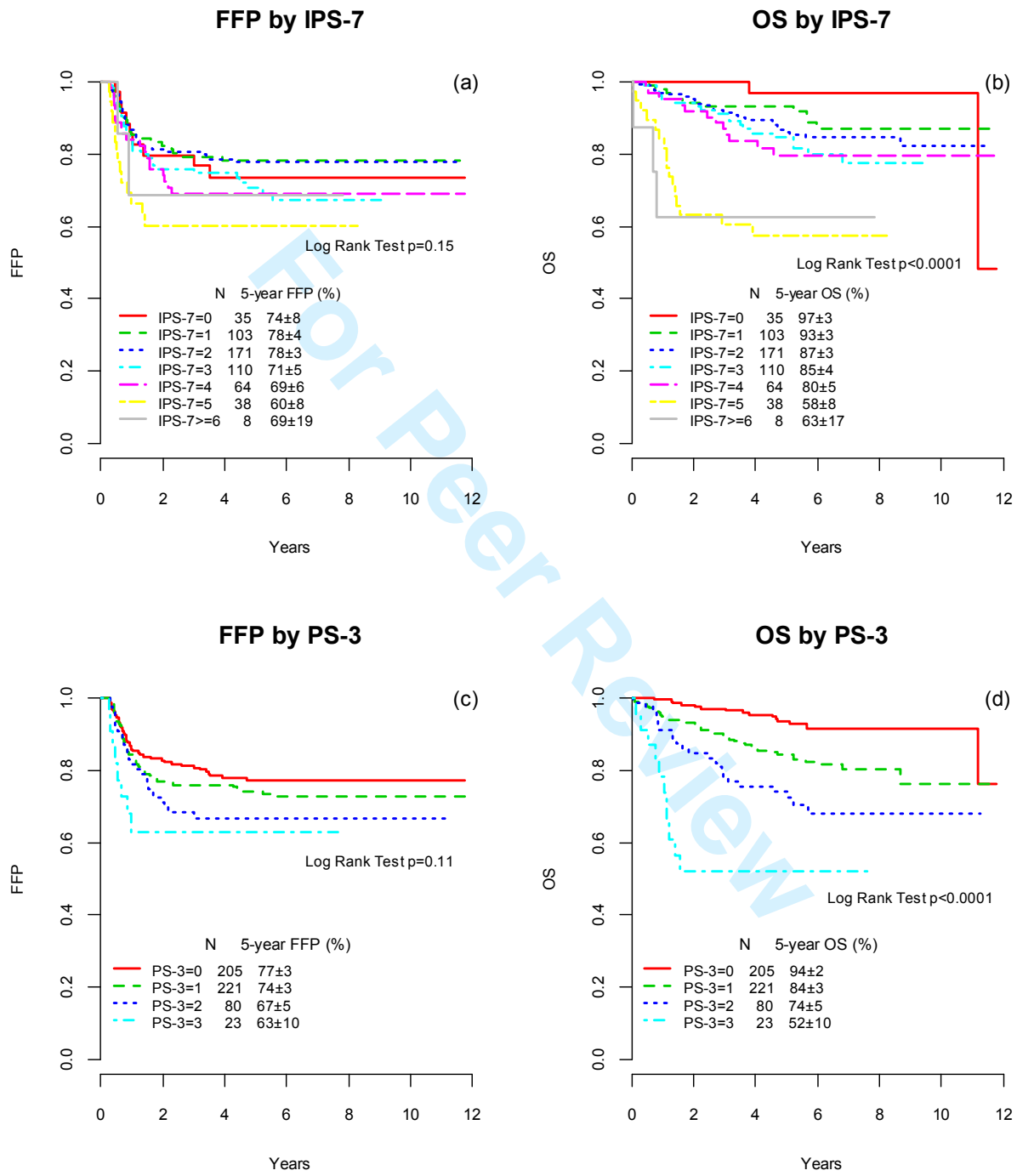
* Plus - minus values are rate estimates ± SE (95 percent confidence intervals can be calculated as the rate estimates ± 1.96 × SE).

Table S3. Cut-off Point Analysis of Factors Selected for PS-3

	N (total=854)	FFP		OS	
		Log-rank Chi-square (p-value)	Hazard Ratio (95% CI)	Log-rank Chi-square (p-value)	Hazard Ratio (95% CI)
Age					
≥45 vs. <45	161 vs. 693	1.69 (0.19)	1.26 (0.89-1.80)	56.07 (<.0001)	3.93 (2.67-5.78)
≥50 vs. <50	111 vs. 743	2.21 (0.14)	1.36 (0.91-2.03)	88.22 (<.0001)	5.37 (3.62-7.95)
≥55 vs. <55	74 vs. 780	3.27 (0.07)	1.52 (0.96-2.39)	70.89 (<.0001)	5.14 (3.36-7.86)
≥60 vs. <60	45 vs. 809	1.88 (0.17)	1.48 (0.84-2.60)	52.98 (<.0001)	5.10 (3.13-8.30)
Stage					
IV vs. other	206 vs. 648	12.58 (.0004)	1.79 (1.29-2.49)	18.93 (<.0001)	2.32 (1.57-3.43)
III/IV vs. other	529 vs. 325	18.93 (<.0001)	2.32 (1.16-2.58)	22.76 (<.0001)	3.29 (1.96-5.54)
Hemoglobin					
<10.5 g/dl vs. other	145 vs. 709	13.35 (.0003)	1.85 (1.32-2.58)	26.40 (<.0001)	2.78 (1.85-4.18)
<10 g/dl vs. other	103 vs. 751	11.60 (.0007)	1.89 (1.30-2.75)	11.01 (.0009)	2.18 (1.36-3.49)
<9.5 g/dl vs. other	82 vs. 772	7.32 (.007)	1.76 (1.16-2.67)	9.76 (.002)	2.20 (1.33-3.66)

Supplementary Figures

Figure S1. Kaplan-Meier curves of FFP and OS of the IPS-7 (a, b) and the PS-3 (c,d) among patients with advanced stage HL



1
2
3
4
5
6
7
8
9
10
11
12
13
14
15
16
17
18
19
20
21
22
23
24
25
26
27
28
29
30
31
32
33
34
35
36
37
38
39
40
41
42
43
44
45
46
47
48
49
50
51
52
53
54
55
56
57
58
59
60