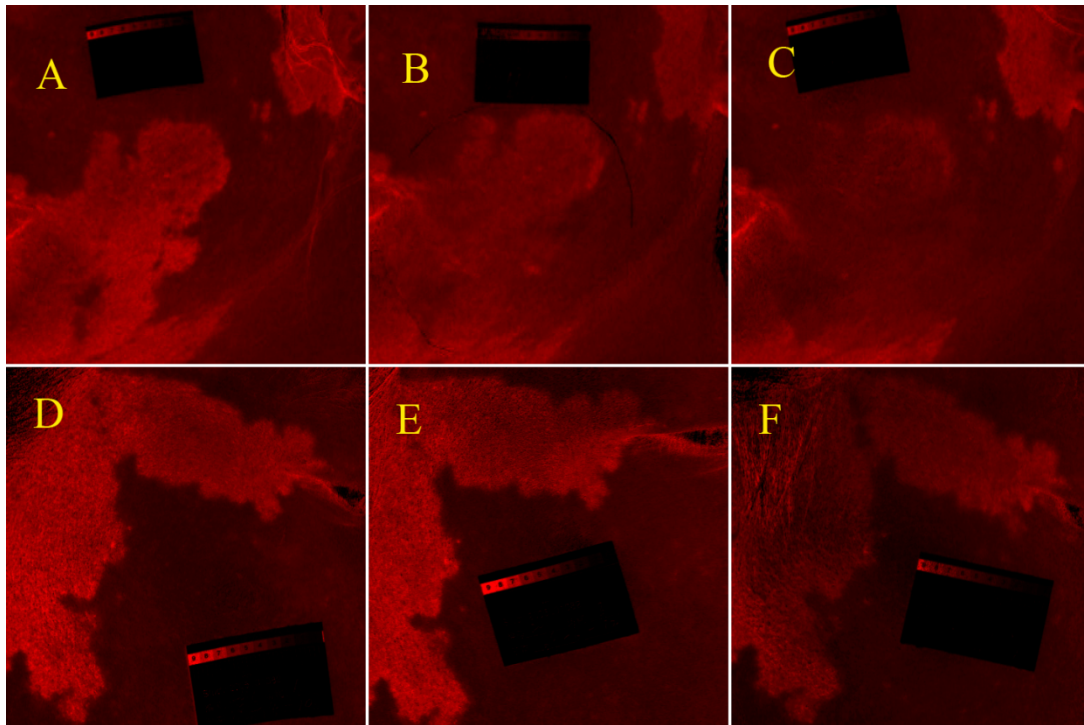


## S1 Fig. Representative erythema index images



These pictures were from the same two patients as presented in Figure 2. Panels A, B and C represent a patient from the PDT-hemoporfin group and D, E and F represent a patient from the placebo group; Panels A and D: baseline; B: after 1 PDT-hemoporfin treatment at week 8; C: after 2 PDT-hemoporfin treatments at week 16; E: after PDT-placebo at week 8; F: after 1 PDT-hemoporfin treatment at week 16; Panels C, B, F and E show PWS fading by  $\geq 90\%$ , 60-89%, 20-59% and  $< 20\%$ , respectively.  $\Delta EI$ : A, 76.8; B, 43.3; C, 29.0; D, 54.4; E, 57.7; F, 39.0.