

**Fungal strain matters: Colony growth and bioactivity of the European medicinal polypores
Fomes fomentarius, *Fomitopsis pinicola* and *Piptoporus betulinus***

AMB Express

Philipp Dresch, Maria Nives D´Aguanno, Katharina Rosam, Ulrike Grienke, Judith Rollinger, Ursula Peintner*

*Institute of Microbiology, University of Innsbruck, Technikerstraße 25, 6020 Innsbruck, Austria,
E-mail: ursula.peintner@uibk.ac.at

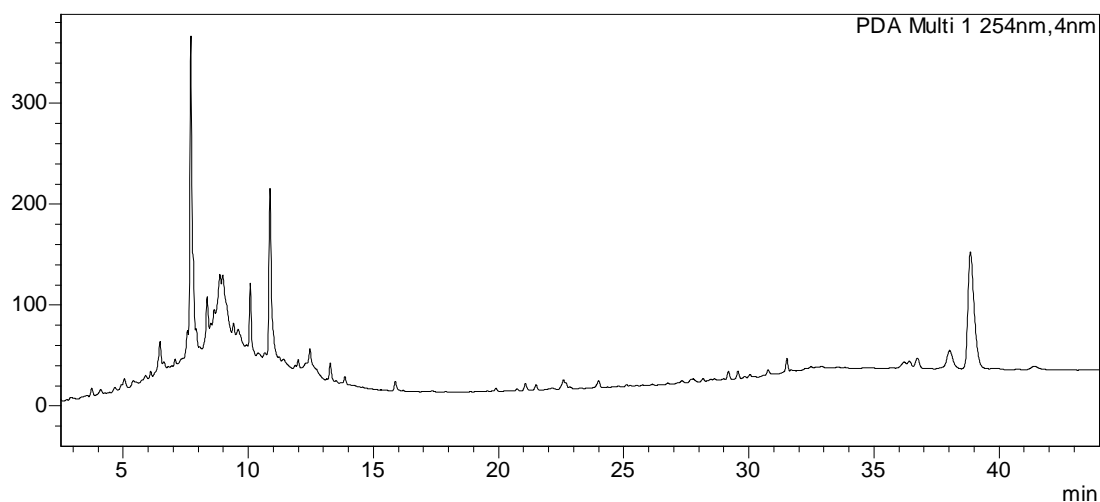
Supplementary Material

Fig. S1 – HPLC chromatograms of ethanolic polypore fruit body extracts. Analyses were carried out using a Shimadzu UFLC XR device at 40 °C, a flow rate of 1.0 mL min⁻¹, injection volume was 10 µL, detection wavelength 254 nm. The stationary phase was a Phenomenex® HyperClone ODS (C18) column, 120 Å, 5µm, 150 x 4.60 mm; mobile phase A: H₂O + 0.9 % AA + 0.1 % FA; mobile phase B: ACN + 0.9 % AA + 0.1 % FA; 0 min: 90 % A to 30 min: 2 % A, 30-45 min: 2 % A.

Fomes fomentarius

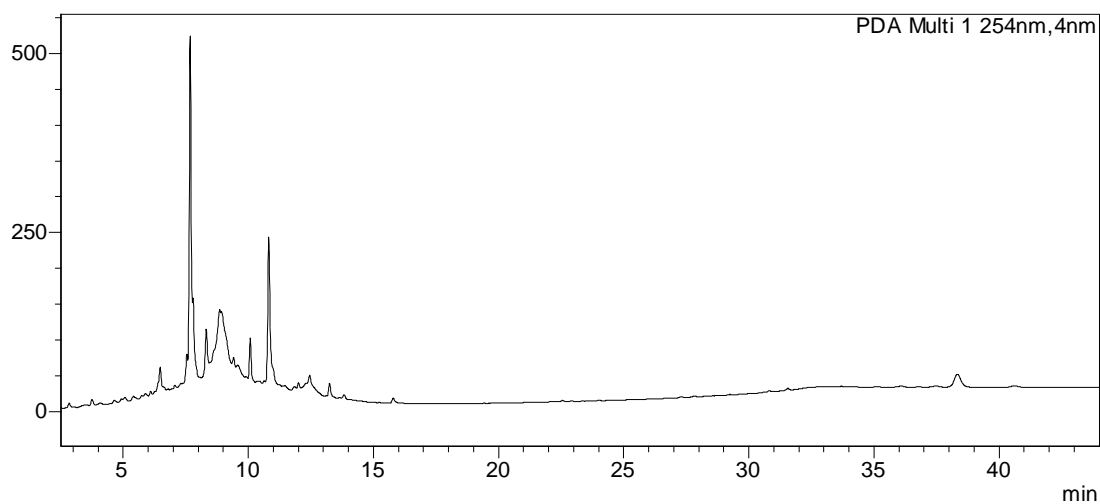
Fomfom IB20130011

mAU



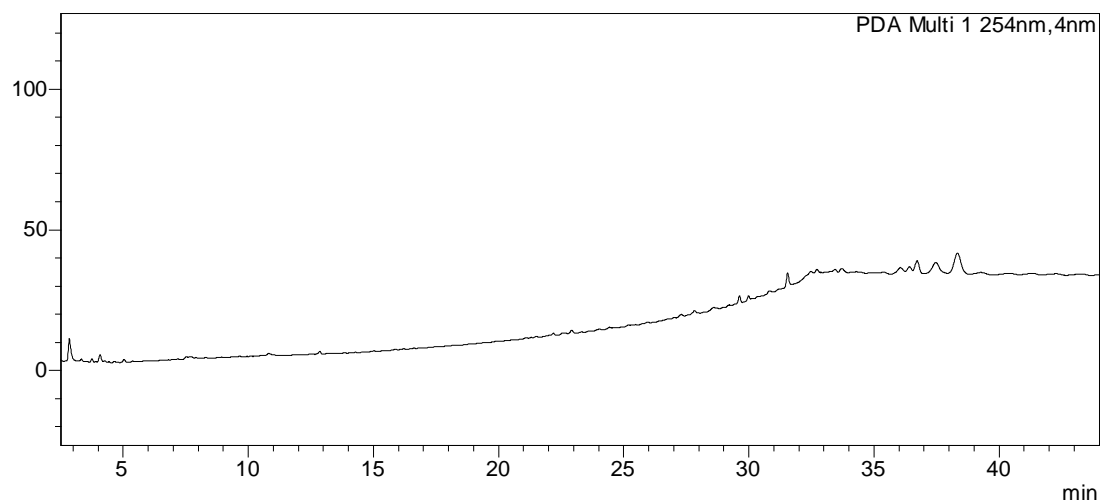
Fomfom IB20130016

mAU



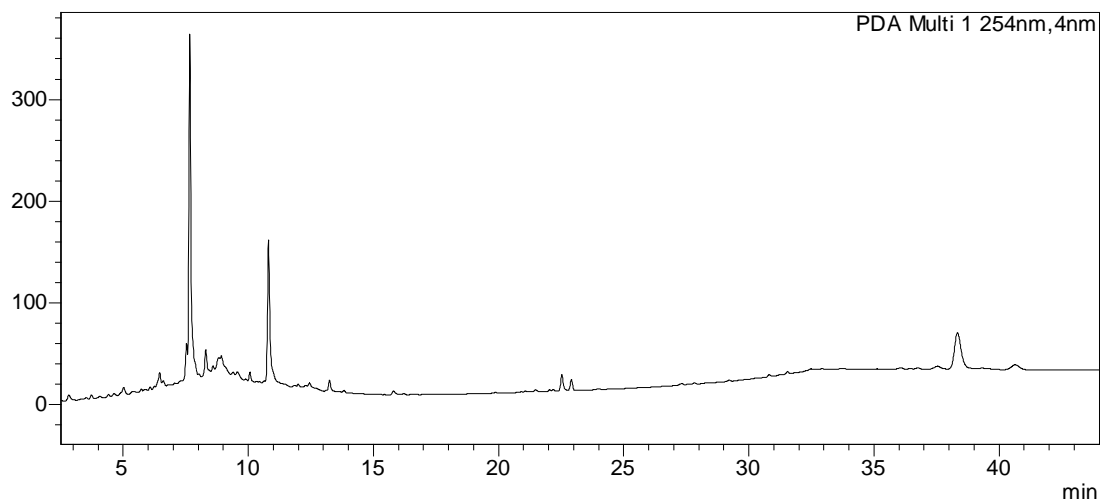
Fomfom IB20130019

mAU



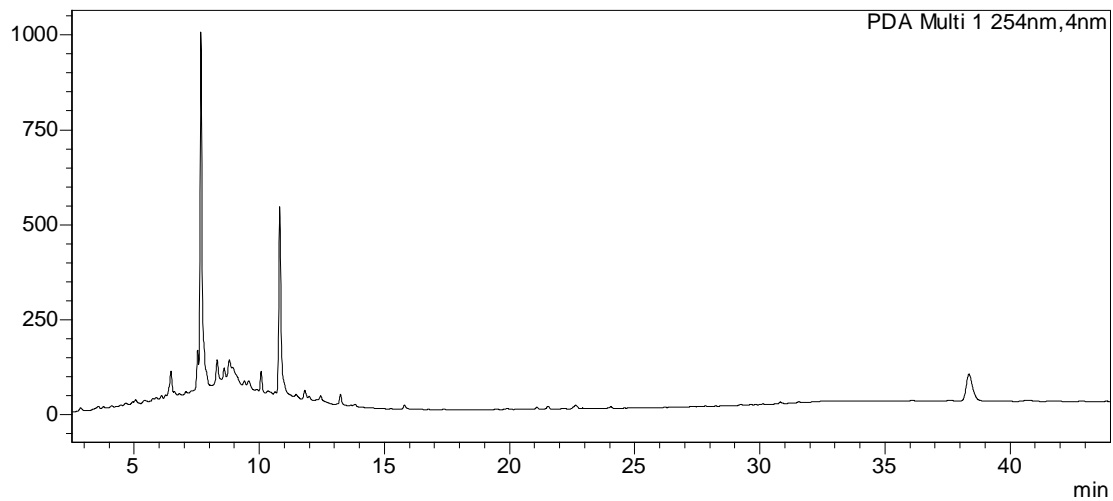
Fomfom IB20130022

mAU



Fomfom IB20130033

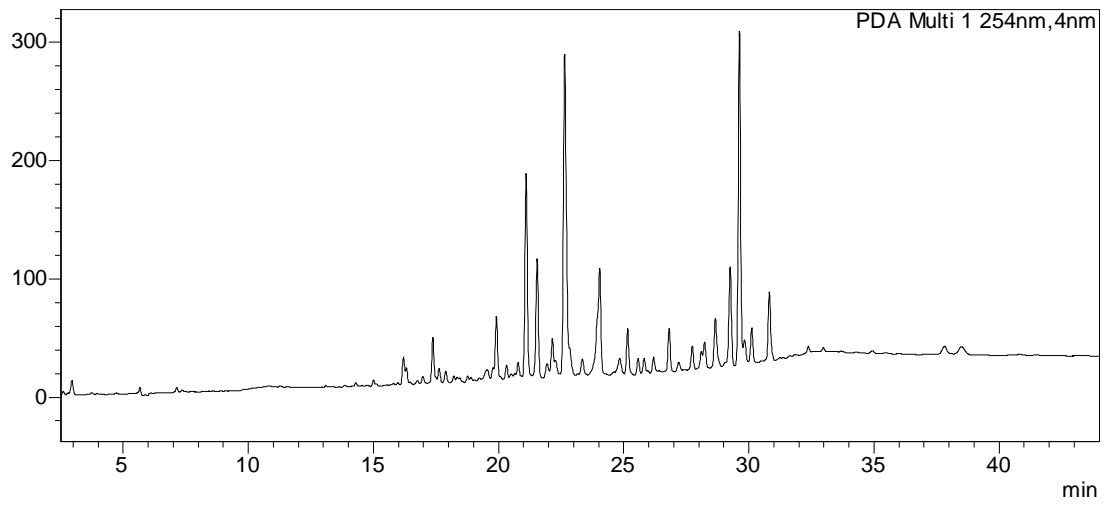
mAU



Fomitopsis pinicola

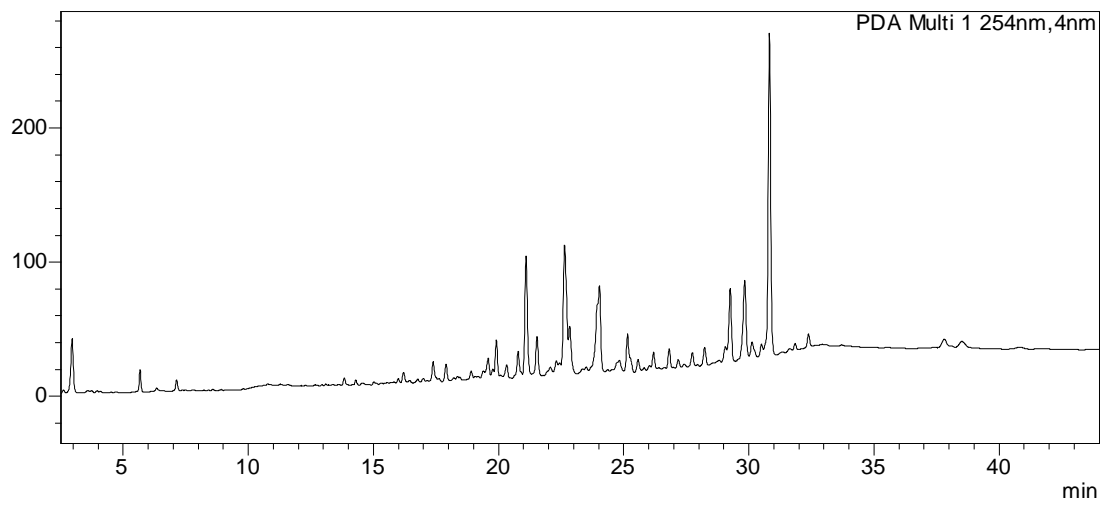
Fompin IB20130010

mAU



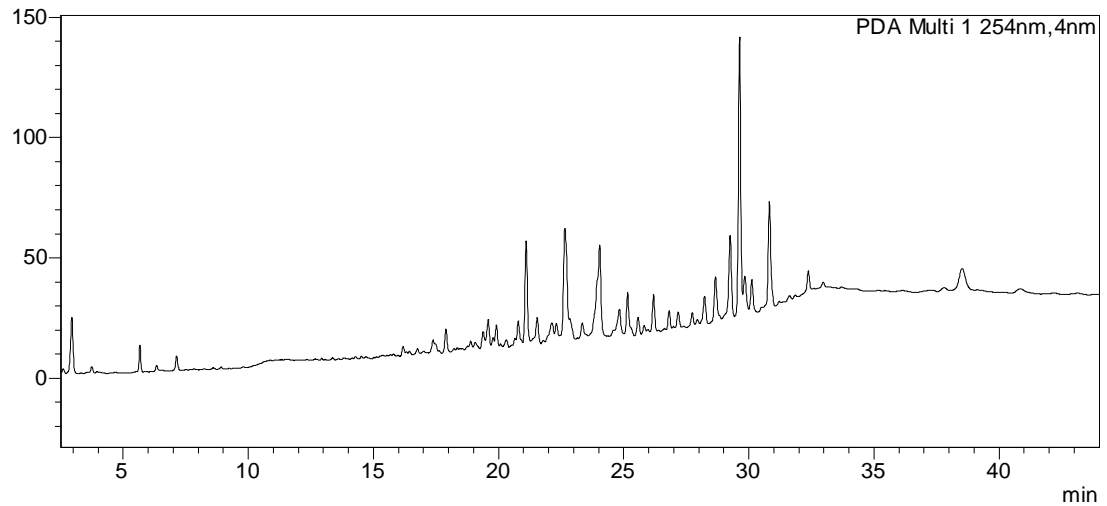
Fompin IB20130013

mAU



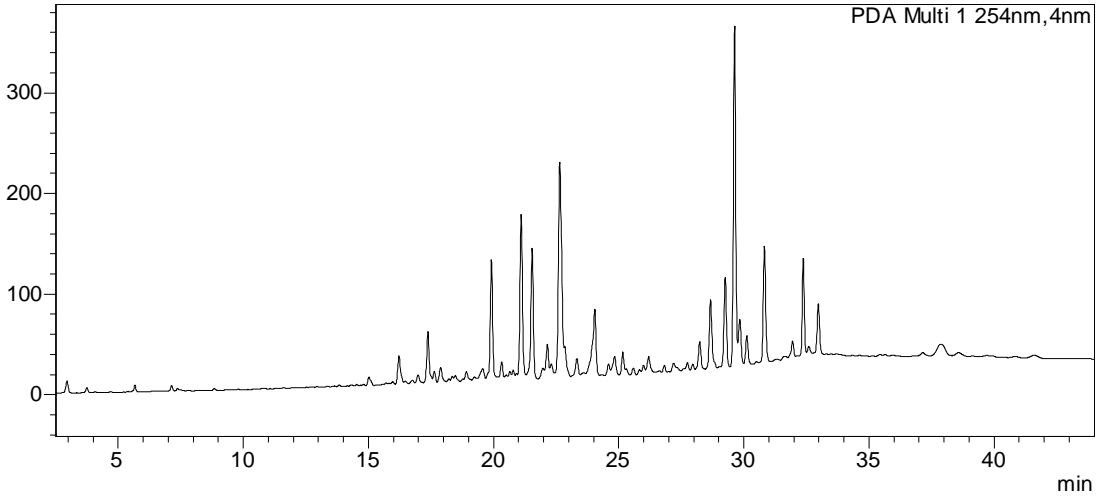
Fompin IB20130015

mAU



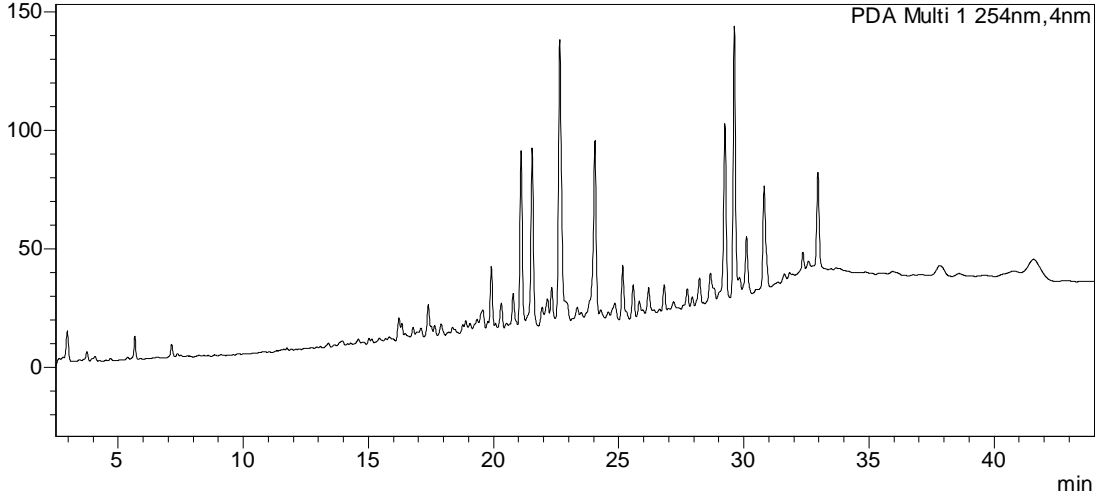
Fompin IB20130018

mAU



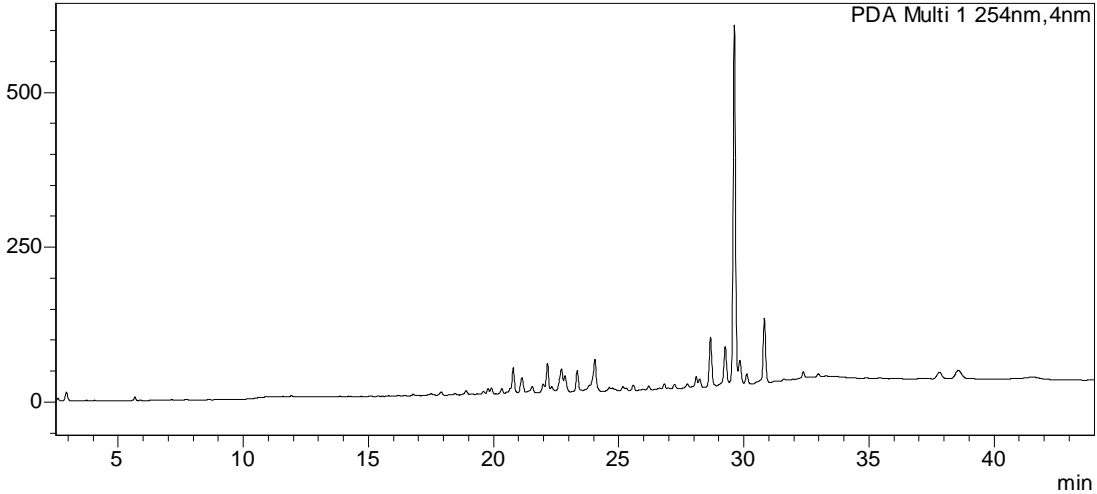
Fompin IB20130021

mAU



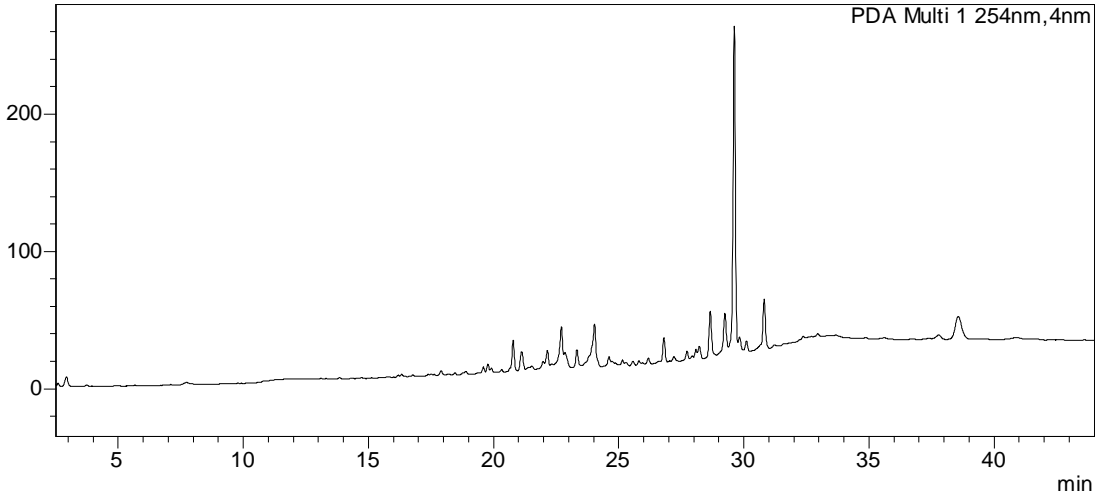
Fompin IB20130024

mAU



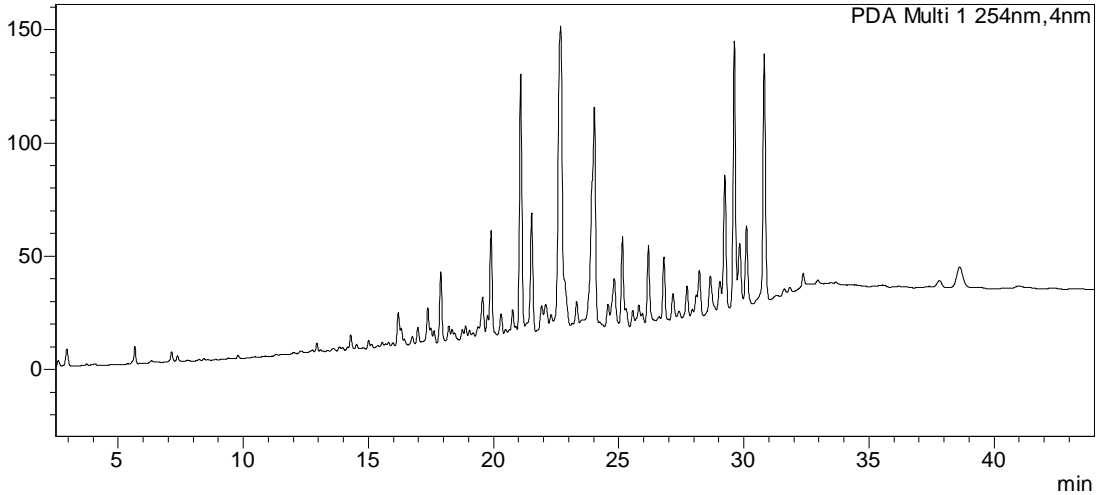
Fompin IB20130026

mAU



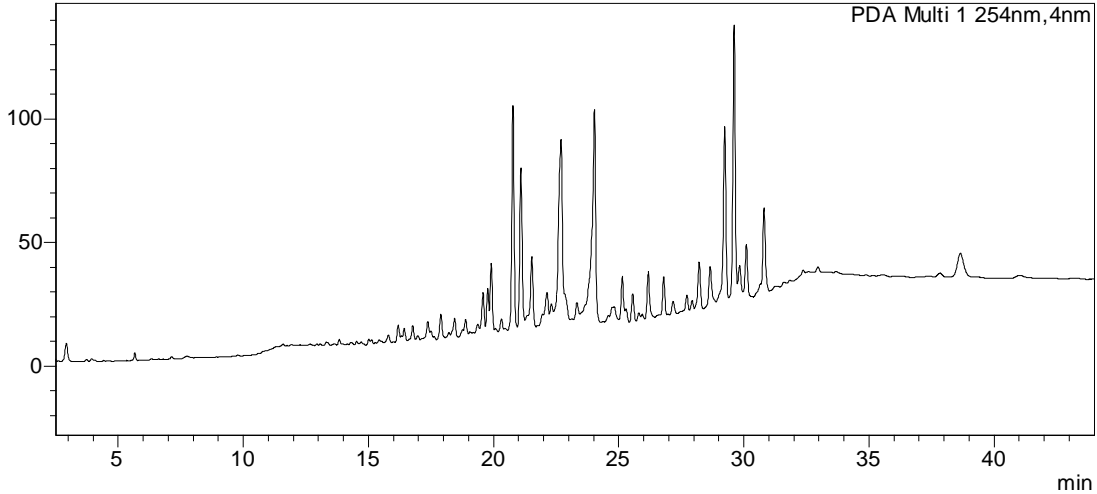
Fompin IB20130030

mAU



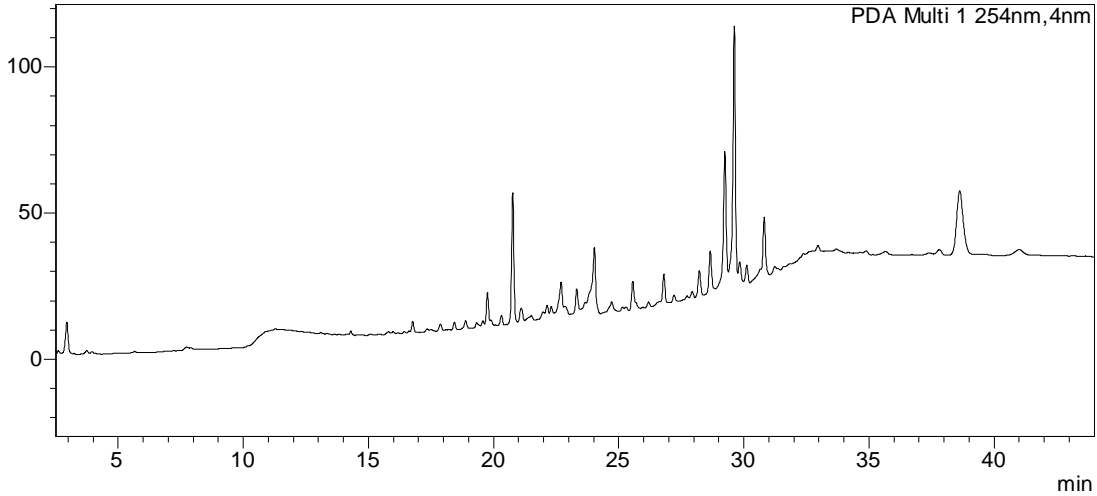
Fompin IB20130037

mAU



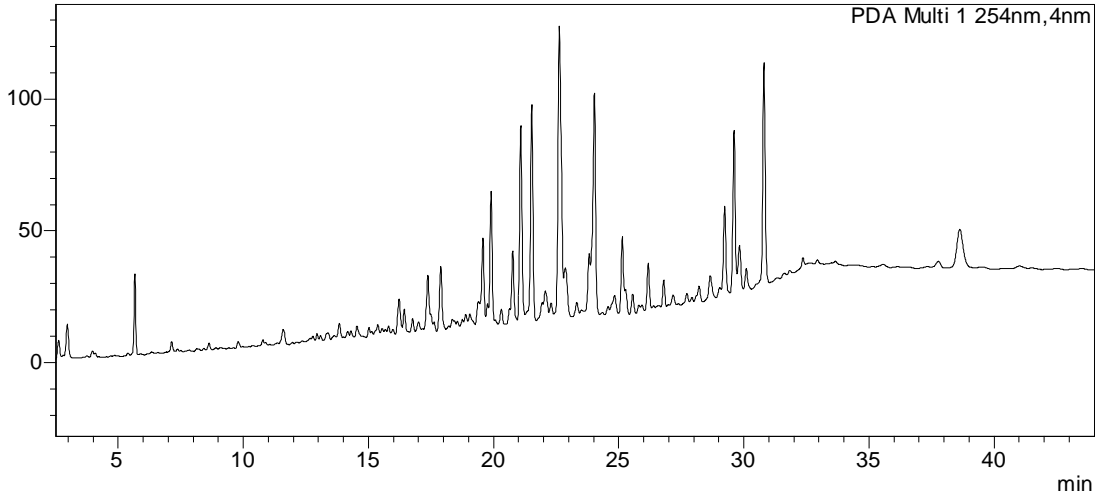
Fompin IB20130040

mAU



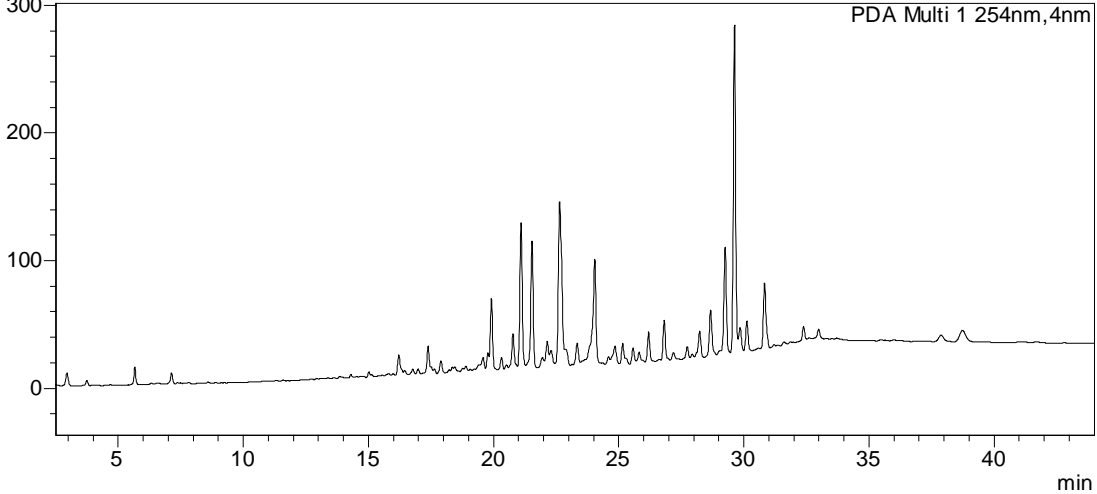
Fompin IB20130053

mAU



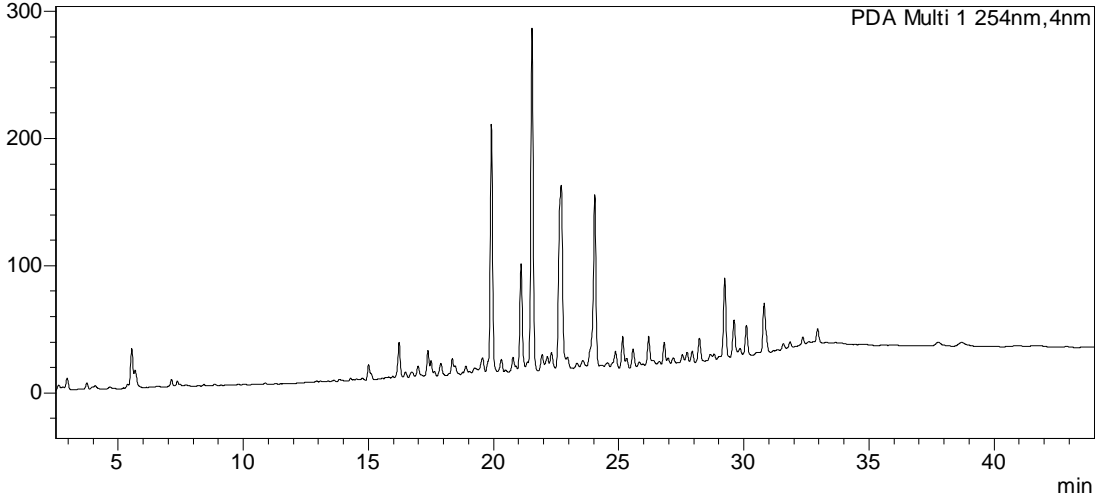
Fompin IB20130034

mAU



Fompin IB20130042

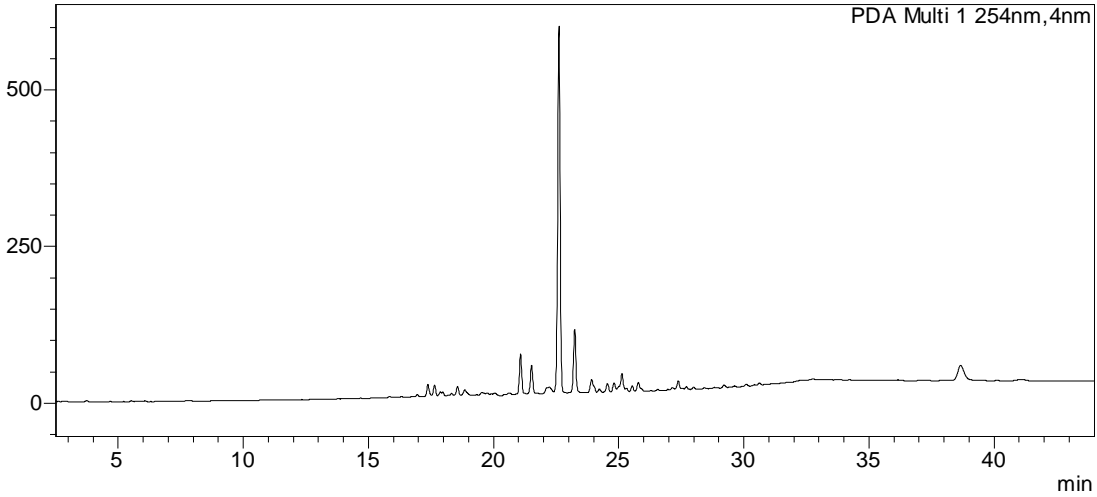
mAU



Piptoporus betulinus

Pipbet IB20130029

mAU



Pipbet IB20130039

mAU

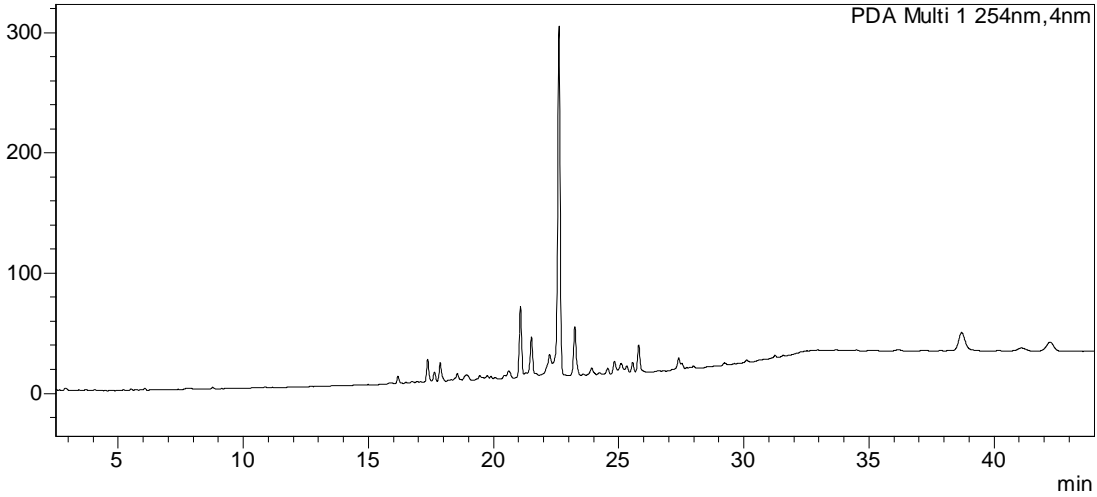


Table S1 - Mean colony diameter and standard deviation of isolated *Fomes fomentarius* strains grown under different temperatures measured over a course of 10 days (n = 3).

Temperature	strain	2 days		5 days		7 days		10 days	
		Mean	SD	Mean	SD	Mean	SD	Mean	SD
10 °C	20130011	0.00	0.00	0.83	0.15	0.13	0.06	0.83	0.15
	20130016	0.00	0.00	0.13	0.06	0.13	0.06	0.83	0.06
	20130019	0.00	0.00	0.13	0.06	0.07	0.06	1.23	0.31
	20130022	0.30	0.10	1.23	0.06	1.27	0.25	1.53	0.12
	20130033	0.00	0.00	0.00	0.00	0.53	0.15	0.70	0.20
20 °C	20130011	0.00	0.00	2.70	0.26	2.93	0.23	4.60	3.58
	20130016	0.00	0.00	4.67	0.29	4.83	0.32	7.10	0.10
	20130019	0.00	0.00	1.43	0.49	1.73	0.51	7.03	0.32
	20130022	1.17	0.06	3.07	0.15	4.50	0.46	6.13	0.47
	20130033	0.00	0.00	0.47	0.06	3.23	0.15	6.17	0.21
25 °C	20130011	0.13	0.02	4.13	0.80	7.13	0.80	8.80	0.26
	20130016	0.16	0.05	5.93	0.72	7.63	0.64	8.70	0.30
	20130019	0.13	0.01	2.87	0.45	5.07	0.42	7.90	0.30
	20130022	0.14	0.01	4.77	0.61	8.13	0.21	8.90	0.17
	20130033	0.93	0.15	2.73	0.57	4.07	0.47	6.43	0.50
30 °C	20130011	0.93	0.40	6.83	1.07	7.07	1.27	8.57	0.06
	20130016	1.07	0.06	7.13	0.15	7.40	0.20	8.57	0.06
	20130019	0.43	0.12	2.17	0.06	2.43	0.06	8.60	0.00
	20130022	1.60	0.10	6.23	0.12	8.13	0.21	8.53	0.06
	20130033	0.13	0.06	3.47	0.31	5.60	2.87	8.30	0.46
32 °C	20130011	0.39	0.25	5.40	1.15	5.33	0.23	6.63	0.45
	20130016	0.28	0.18	3.90	0.61	5.13	0.25	6.73	0.25
	20130019	0.03	0.06	3.47	0.47	3.77	0.51	5.40	0.53
	20130022	0.12	0.02	4.64	0.34	4.97	0.25	7.03	0.23
	20130033	1.31	0.12	6.23	0.49	8.67	0.49	8.97	0.06
37 °C	20130011	0.00	0.00	0.00	0.00	0.00	0.00	0.00	0.00
	20130016	0.00	0.00	0.00	0.00	0.00	0.00	0.00	0.00
	20130019	0.00	0.00	0.00	0.00	0.00	0.00	0.00	0.00
	20130022	0.17	0.12	0.23	0.06	1.07	0.15	1.53	0.06
	20130033	0.00	0.00	0.00	0.00	0.00	0.00	0.00	0.00

Table S2 - Mean colony diameter and standard deviation of isolated *Fomitopsis pinicola* strains grown under different temperatures measured over a course of 10 days (n = 3).

Temperature	strain	2 days		5 days		7 days		10 days	
		Mean	SD	Mean	SD	Mean	SD	Mean	SD
10 °C	20130010	0.00	0.00	0.07	0.06	0.13	0.06	1.70	0.35
	20130013	0.00	0.00	0.13	0.06	0.17	0.06	1.43	0.15
	20130015	0.00	0.00	0.17	0.06	0.23	0.06	1.67	0.31
	20130018	0.00	0.00	0.23	0.06	0.23	0.12	2.77	1.51
	20130021	0.00	0.00	0.23	0.12	0.13	0.06	1.70	0.26
	20130026	0.60	0.10	1.10	0.10	1.07	0.21	1.47	0.15
	20130030	0.00	0.00	0.40	0.10	1.03	0.15	1.30	0.20
	20130034	0.10	0.10	0.33	0.21	0.43	0.12	1.90	0.26
	20130040	0.13	0.06	0.43	0.06	0.20	0.17	0.40	0.69
	20130042	0.00	0.00	0.13	0.06	0.20	0.10	1.37	0.12
20 °C	20130010	0.00	0.00	6.03	0.32	6.27	1.45	7.87	0.32
	20130013	0.00	0.00	6.17	0.31	6.47	0.31	7.80	0.26
	20130015	0.00	0.00	5.83	0.15	6.03	0.15	8.03	0.06
	20130018	0.00	0.00	4.50	0.20	4.70	0.20	3.00	0.69
	20130021	0.00	0.00	4.83	0.32	5.03	0.32	7.37	0.47
	20130026	1.20	0.10	3.50	0.10	5.27	0.25	6.83	0.15
	20130030	0.13	0.06	1.83	0.25	2.27	0.49	2.73	0.38
	20130034	0.13	0.06	1.77	0.15	5.00	0.26	7.10	0.26
	20130040	0.23	0.06	1.70	0.17	0.90	0.10	1.27	0.15
	20130042	0.00	0.00	1.00	0.10	5.90	0.10	7.93	0.15
25 °C	20130010	0.42	0.20	6.77	0.21	7.70	1.04	8.93	0.06
	20130013	0.37	0.31	6.47	0.31	7.30	0.70	8.20	0.62
	20130015	0.20	0.10	6.13	0.15	8.53	0.91	8.80	0.35
	20130018	0.13	0.15	6.17	0.20	7.10	0.53	8.27	0.55
	20130021	0.03	0.06	6.97	0.32	7.13	0.80	8.37	0.60
	20130026	0.13	0.15	5.03	0.10	5.37	0.15	6.03	0.45
	20130030	1.44	0.34	4.13	0.25	4.83	0.21	6.00	1.01
	20130034	2.02	0.48	4.80	0.15	6.67	0.87	7.43	0.55
	20130040	2.94	0.75	7.63	0.17	8.17	0.23	8.57	0.45
	20130042	0.67	0.35	6.90	0.10	7.63	1.19	8.97	0.06
30 °C	20130010	1.17	0.44	6.57	0.21	6.77	0.21	8.57	0.06
	20130013	1.13	0.15	6.57	0.40	6.67	0.58	8.47	0.06
	20130015	1.10	0.10	5.23	0.21	5.43	0.21	8.57	0.06
	20130018	1.47	0.15	6.93	0.12	7.13	0.12	8.60	0.00
	20130021	1.50	0.00	6.97	0.15	7.17	0.15	8.53	0.06
	20130026	1.57	0.15	5.03	0.21	6.77	0.15	7.80	0.10
	20130030	1.00	0.20	2.40	0.40	8.07	0.21	8.30	0.46
	20130034	1.17	0.31	2.80	0.66	2.00	0.10	8.90	0.00
	20130040	0.20	0.10	1.27	0.25	6.60	0.40	2.43	4.21
	20130042	1.13	0.15	1.03	0.06	6.90	0.10	8.57	0.06

Continuation Table S2

32 °C	20130010	0.45	0.45	4.40	0.53	5.53	0.58	6.43	0.10
	20130013	1.65	0.44	3.93	0.06	4.87	0.32	5.57	0.46
	20130015	2.10	0.69	4.53	1.10	5.07	0.96	5.83	0.81
	20130018	3.04	0.61	4.60	0.61	5.43	1.08	6.63	0.38
	20130021	0.00	0.00	3.83	1.21	6.47	0.49	6.83	0.67
	20130026	2.75	0.52	6.87	0.15	8.43	0.49	8.97	0.58
	20130030	3.21	0.10	7.00	0.10	8.57	0.67	8.90	0.32
	20130034	0.50	0.30	1.03	0.15	1.73	0.29	5.40	0.96
	20130040	2.18	0.34	4.87	0.32	5.93	0.86	6.63	1.08
	20130042	1.22	0.23	4.67	0.59	5.17	0.91	6.17	0.49
37 °C	20130010	0.00	0.00	0.00	0.00	0.00	0.00	0.00	0.00
	20130013	0.00	0.00	0.00	0.00	0.00	0.00	0.00	0.00
	20130015	0.00	0.00	0.00	0.00	0.00	0.00	0.00	0.00
	20130018	0.00	0.00	0.00	0.00	0.00	0.00	0.00	0.00
	20130021	0.00	0.00	0.00	0.00	0.00	0.00	0.00	0.00
	20130026	0.97	0.21	0.20	0.10	1.27	0.12	1.47	0.12
	20130030	0.00	0.00	0.13	0.15	0.00	0.00	0.00	0.00
	20130034	0.07	0.06	0.23	0.06	0.00	0.00	0.00	0.00
	20130040	0.00	0.00	0.00	0.00	0.00	0.00	0.10	0.17
	20130042	0.00	0.00	0.10	0.17	0.00	0.00	0.00	0.00

Table S3 - Mean colony diameter and standard deviation of isolated *Piptoporus betulinus* strains grown under different temperatures measured over a course of 10 days (n = 3).

Temperature	strain	2 days		5 days		7 days		10 days	
		Mean	SD	Mean	SD	Mean	SD	Mean	SD
10 °C	20130029	0.03	0.06	0.30	0.10	1.73	0.15	1.90	0.26
	20130039	0.17	0.06	0.23	0.06	0.10	0.10	1.73	0.15
	20130055	0.30	0.10	0.47	0.15	1.57	0.06	0.70	0.20
20 °C	20130029	1.03	0.15	2.97	0.15	5.27	0.15	7.33	0.21
	20130039	0.93	0.15	2.20	0.26	3.70	0.53	6.20	0.56
	20130055	0.47	0.15	1.67	0.61	3.67	1.01	6.30	1.04
25 °C	20130029	1.83	0.42	4.70	0.15	7.67	0.15	8.10	0.85
	20130039	1.02	0.11	5.67	0.26	7.30	0.53	8.07	0.90
	20130055	1.54	0.40	5.60	0.61	7.07	1.01	8.97	0.06
30 °C	20130029	0.87	0.25	2.70	0.44	5.37	0.40	8.33	0.21
	20130039	1.03	0.31	2.07	0.15	4.33	0.84	6.33	0.56
	20130055	0.33	0.06	1.63	0.32	5.17	0.46	7.83	1.04
32 °C	20130029	0.83	0.06	1.53	0.44	4.90	0.62	7.37	0.21
	20130039	0.59	0.09	2.23	0.15	3.90	2.27	6.77	0.56
	20130055	0.28	0.07	1.90	0.32	4.77	1.58	8.40	1.04
37 °C	20130029	0.00	0.00	0.00	0.00	0.00	0.00	0.00	0.00
	20130039	0.00	0.00	0.13	0.06	0.00	0.00	0.00	0.00
	20130055	0.07	0.06	0.07	0.06	0.13	0.06	0.13	0.06