

**Figure S1.** Pharmacodynamics in colon of C57BL/6 mice fed diets containing variable levels eRapa. **A.** Western blot with each mouse indicated above each lane developed with the indicated antibodies. Below each lane we show the levels of rapamycin in the colon, blood and the ratio of intensity values for the phosphorylation state-dependent signal (P(240/244)rpS6) to phosphorylation state-independent (rpS6) signal, which we show graphed in **B.**

**Figure S2.** Rapamycin effects on Akt signaling in colon of eRapa-fed mice. **A.** Representative Western blot developed with the antibodies shown and also showing mouse identifications above and blood and colon concentrations of rapamycin below the lanes. **B.** Graph showing ratio of phosphorylation-dependent signal (Ser473) to phosphorylation-independent (Akt) signal. **C.** Shows the ratio of Akt signal to actin.

Figure S1

C57BL/6J

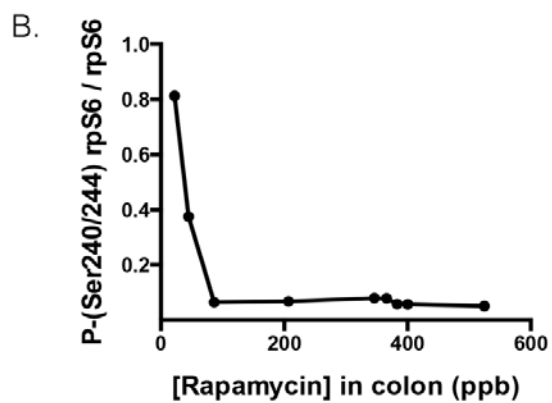
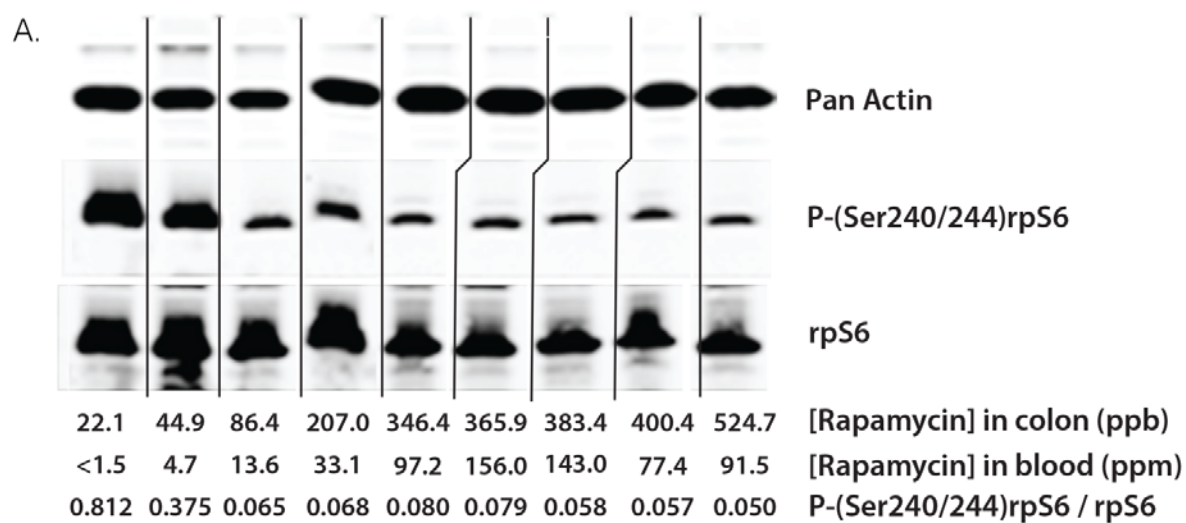


Figure S2

